

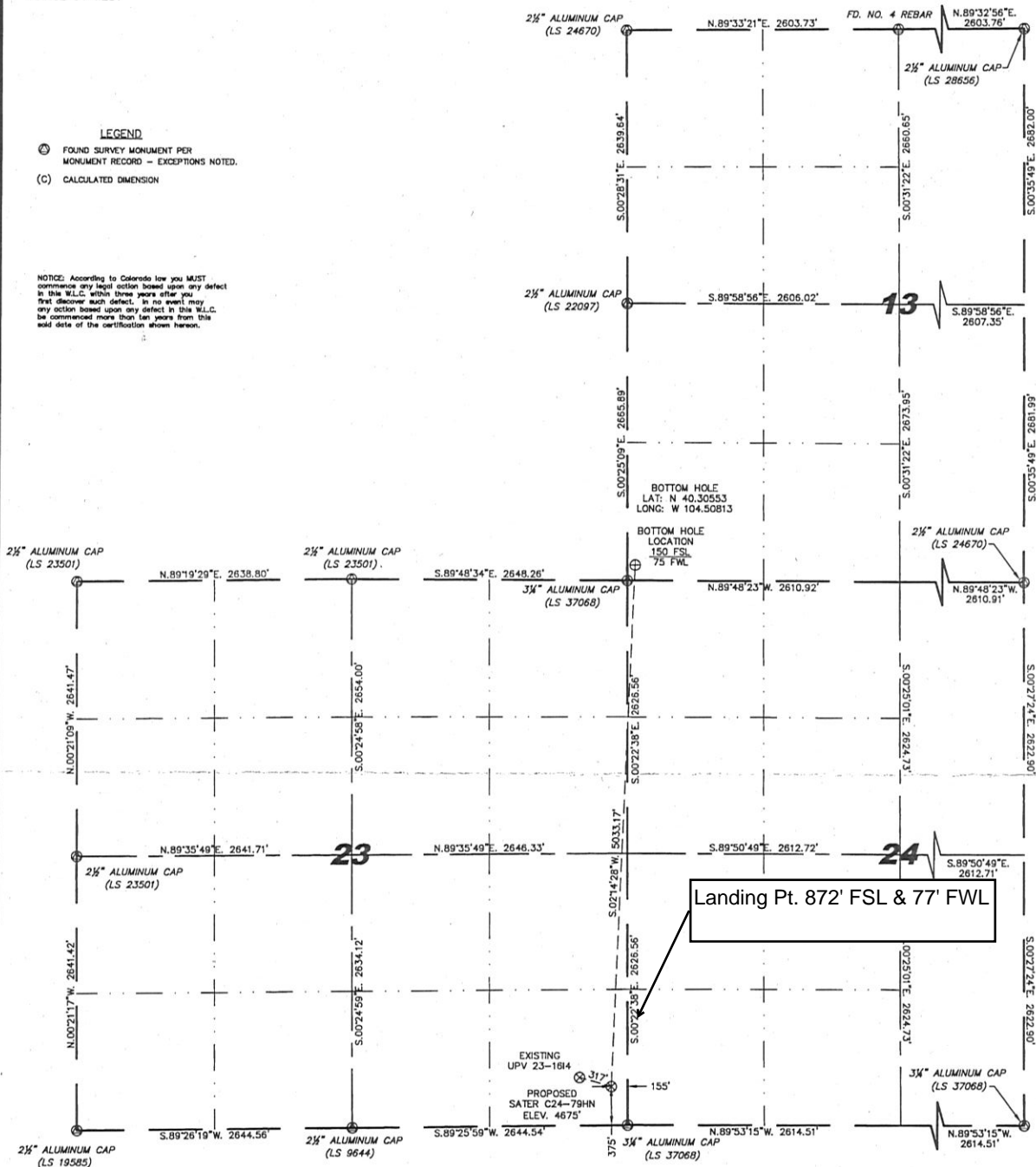
SECTION 13, 23 & 24
TOWNSHIP 4 NORTH
RANGE 64 WEST

WELL LOCATION CERTIFICATE
THIS MAP DOES NOT REPRESENT A BOUNDARY SURVEY

LEGEND

- (M) FOUND SURVEY MONUMENT PER
MONUMENT RECORD - EXCEPTIONS NOTED.
(C) CALCULATED DIMENSION

NOTICE: According to Colorado law you MUST
commence any legal action based upon any defect
in this W.L.C. within three years after you
first discover such defect. In no event may
any action based upon any defect in this W.L.C.
be commenced more than ten years from this
date of the certification shown hereon.



IN ACCORDANCE WITH A REQUEST FROM ERIK VAN DECAR - NOBLE ENERGY INC.
STELL SURVEYING SERVICES, LLC HAS DETERMINED THE LOCATION OF THE SATER
C24-79HN WELL TO BE 375' FSL, 155' FSL, AS MEASURED AT NINETY (90)
DEGREES FROM THE SECTION LINES, SECTION 13, 23 & 24, TOWNSHIP 4 NORTH,
RANGE 64 WEST, 6TH PRINCIPLE MERIDIAN, WELD COUNTY, COLORADO.

I HEREBY CERTIFY THAT THIS WELL LOCATION CERTIFICATE WAS PREPARED BY ME,
OR UNDER MY DIRECT SUPERVISION, THAT THE FIELD WORK WAS COMPLETED ON
11/08/2010, FOR AND ON BEHALF OF NOBLE ENERGY INC. THAT IT IS NOT A LAND
SURVEY PLAT OR AN IMPROVEMENT SURVEY PLAT, AND THAT IT IS NOT TO BE
RELIED UPON FOR ESTABLISHMENT OF FENCE, BUILDING, OR OTHER FUTURE
IMPROVEMENT LINES.

LATITUDE & LONGITUDE (NAD 83 SURFACE HOLE):

LATITUDE: N 40.29173°
LONGITUDE: W 104.50904°
PDOP: 2.1
QUARTER-QUARTER: SE/4SE/4 SEC 23
NEAREST PROPERTY LINE: 155' EAST

NOTES:

- 1) BASIS OF BEARINGS FOR THIS MAP ARE BASED UPON GPS OBSERVATIONS
MADE ON 11/08/2010 BETWEEN MONUMENTS LOCATED AT THE SOUTHEAST
SECTION CORNER AND THE NORTHEAST SECTION CORNER OF SAID SECTION
AND WITH ALL BEARINGS SHOWN HEREON RELATIVE THERETO.
- 2) COORDINATES SHOWN ARE COLORADO STATE PLANE (NORTH ZONE) NAD 83.
- 3) ELEVATIONS ARE BASED UPON NGS OPUS SOLUTION NAVD 88 DATUM.
- 4) THE NEAREST EXISTING WELL IS: UPV 23-1614, 317' NORTHWEST.
- 5) SEE LOCATION DRAWING FOR ALL IMPROVEMENTS WITHIN VISIBLE
IMPROVEMENTS LIMIT.
- 6) THE LOCATION FALLS IN CROP LAND.



0 1000

Scale: 1" = 1000'



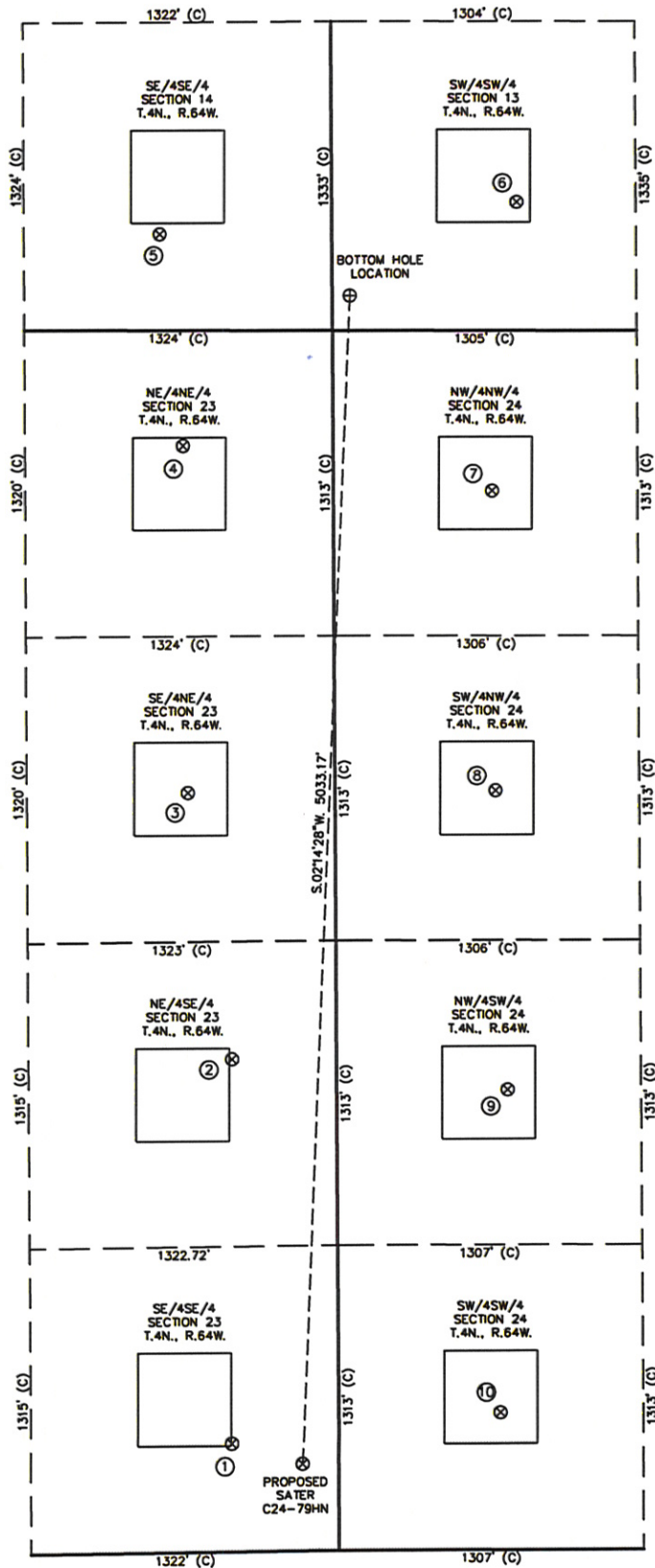
David C. Holmes
Professional Land Surveyor Registration No. 32828
State of Colorado

JOB #: 100286

Completed 11/23/2010

SITE SKETCH - SATER C24-79HN

SECTIONS 23
TOWNSHIP 4 NORTH
RANGE 64 WEST



- | | |
|---|---|
| ①
UPV 23-1614
SE/SE SEC. 23
466' FSL
459' FEL
EL 4670'
N 40.29198
W 104.51013
PDOP 2.1 | ②
UPV 23-914
NE/SE SEC. 23
2122' FSL
449' FEL
EL 4687'
N 40.29853
W 104.51006
PDOP 1.9 |
| ③
UPV 23-814
SE/NE SEC. 23
1990' FNL
632' FEL
EL 4663'
N 40.29968
W 104.51070
PDOP 1.9 | ④
UPV 23-114
NE/NE SEC. 23
496' FNL
645' FEL
EL 4651'
N 40.30379
W 104.51073
PDOP 1.9 |
| ⑤
WATKINS 14-16
SE/SE SEC. 14
415' FSL
740' FEL
EL 4649'
N 40.30629
W 104.51105
PDOP 2.2 | ⑥
UPV 13-134
SW/SW SEC. 14
555' FSL
794' FNL
EL 4690'
N 40.30861
W 104.50555
PDOP 1.9 |
| ⑦
SPIKE STATE
GWS C24-04
NW/NW SEC. 24
690' FNL
681' FNL
EL 4656'
N 40.30320
W 104.50597
PDOP 2.4 | ⑧
SPIKE STATE
GWS C24-05
SW/NW SEC. 24
1980' FNL
690' FNL
EL 4692'
N 40.29966
W 104.50596
PDOP 2.7 |
| ⑨
SPIKE STATE
GWS C24-12
NW/SW SEC. 24
1982' FSL
734' FNL
EL 4703'
N 40.29612
W 104.50583
PDOP 2.9 | ⑩
SPIKE STATE
GWS C24-13
SW/SW SEC. 24
588' FSL
694' FNL
EL 4697'
N 40.29229
W 104.50599
PDOP 2.2 |

- NOTES:
1) THIS SKETCH DOES NOT REPRESENT A BOUNDARY SURVEY.
2) THE DATUM FOR THE LATITUDES AND LONGITUDES ON THIS SKETCH IS NAD83.

