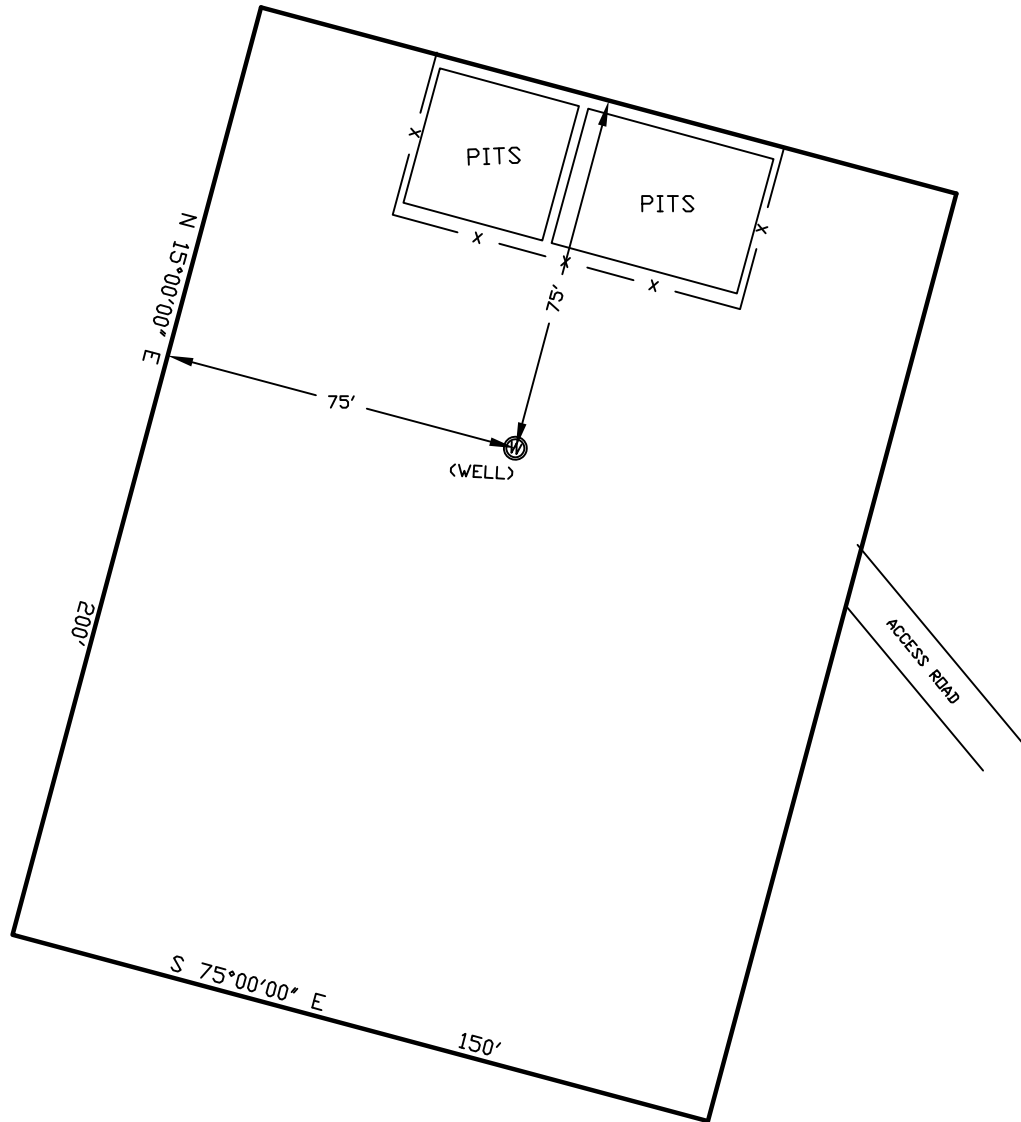


WELLSITE/PRODUCTION EQUIPMENT LAYOUT

OPERATOR: Pioneer Natural Resources

WELL NAME: Hidalgo 11-12 (Revised)

NWNW of SECTION 12 TOWNSHIP 32 S, RANGE 68 W OF THE 6TH P.M., IN LAS ANIMAS COUNTY



NOTE:

MUD AND BLOW PITS WILL BE CONVERTED TO UNLINED EVAPORATION PITS FOR PRODUCTION.

WELLHEADS ARE TYPICALLY PCP DRIVE HEADS

March 24, 2011

Date Platted

GRAPHIC SCALE



(IN FEET)

1 inch = 40 ft.

LEGEND:



= WELLHEAD

= EXISTING WELLPAD

= FENCE (4 STRAND)

= 4" GAS GATHERING LINE

= 2" WATER LINE

M.R. = COMBO METER RUN AND WATER/GAS SEPARATOR

G.D.S. = GAS DRIVE SYSTEM

SHIELDS SURVEY Ltd. Co.
Raton, New Mexico 87740
(505)445-1232