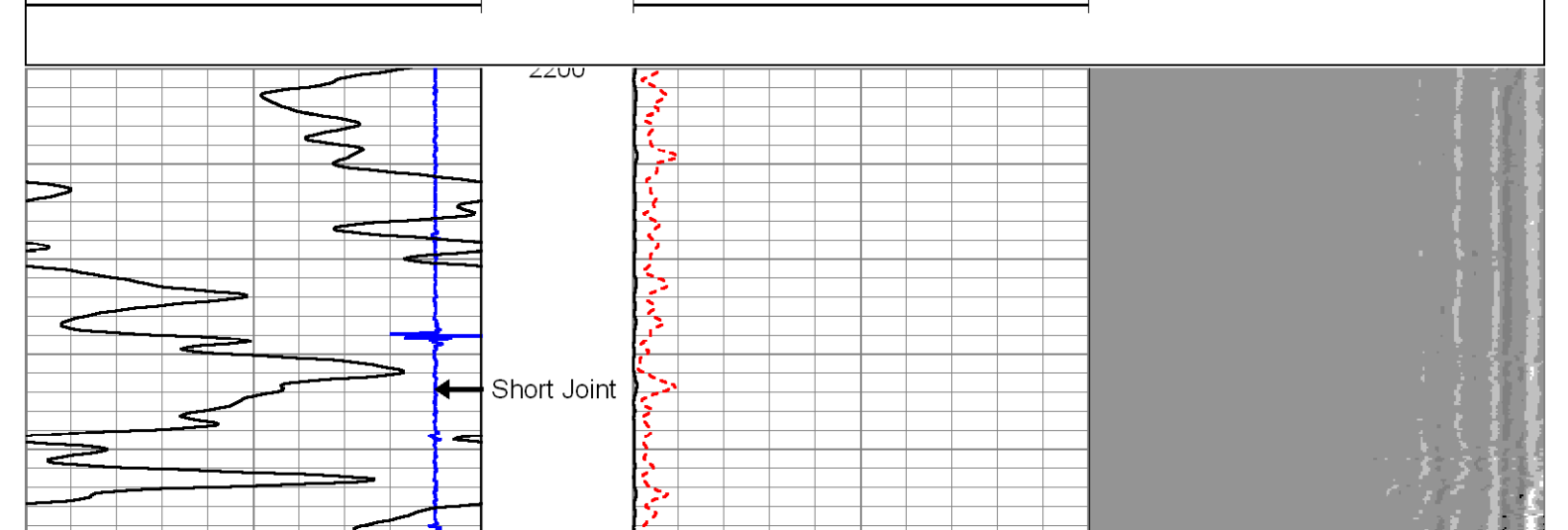
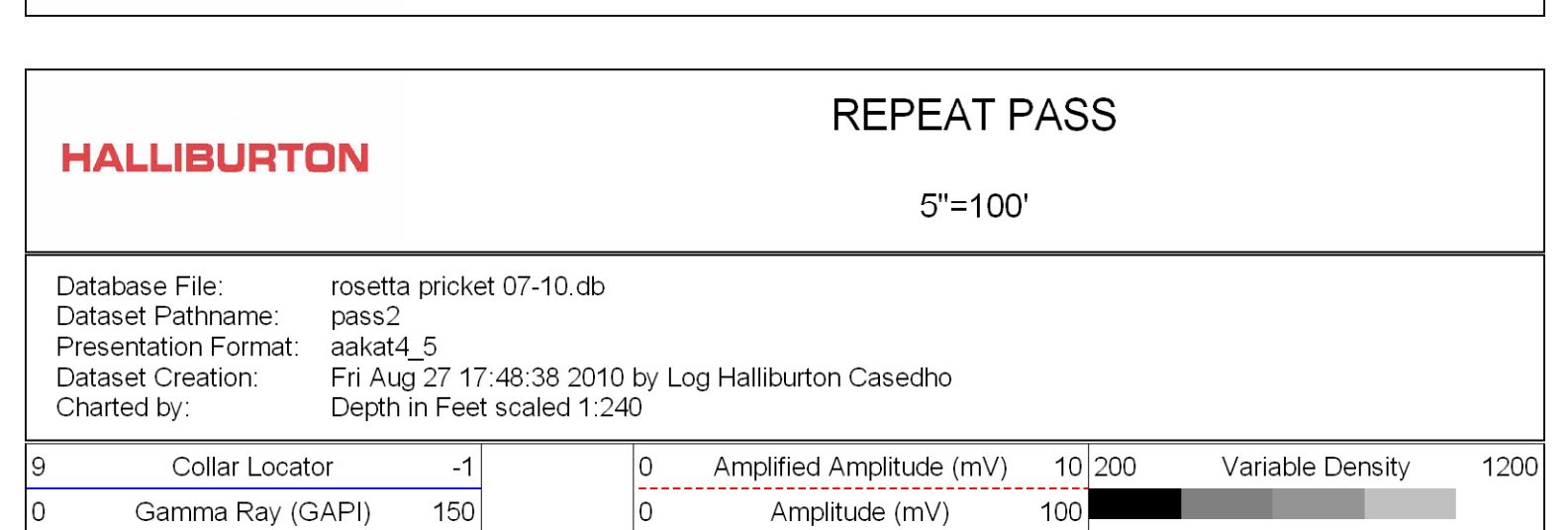
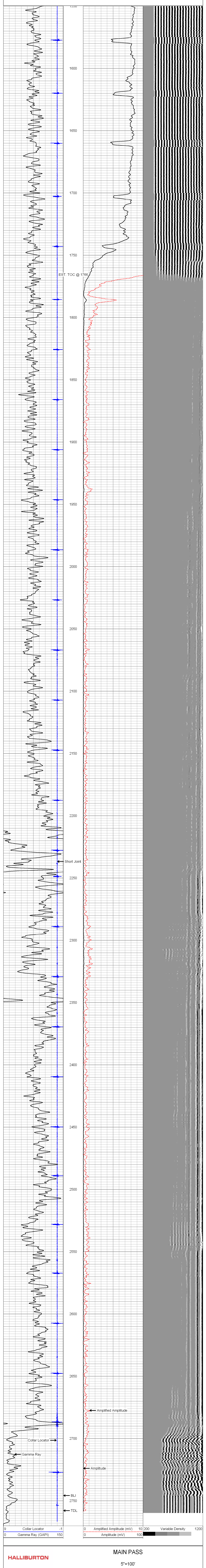


Company	ROSETTA RESOURCES	Well	PRICKETT 07-10	County	YUMA	State	CO
Field	REPUBLICAN	Company	ROSETTA RESOURCES	Well	PRICKETT 07-10	Field	REPUBLICAN
Location	2341 FSL & 2066 FEL NW SE	API No.	05125148800	Server #	7594283	Other Services	
Sec	7	Temp	1 S	Rge	45W	PERFORATE	2315-2326
Ground Level	KB	Ground Level	KB	12	ft above perm. datum	Elevation	KB 3924, KB 3923, KB 3912
Log Measured From	KB	Drilling Measured From	KB	Time Finish Hole	137240-03:00:00	Surface	SI/RFACE
Depth - Driller	2825	Depth - Logger	2765	Equipment	1766 1829 / 7 PERFORATOR	Witnessed By	TCM HARSTON
Depth - Logged Interval	2746	Depth - Logged Interval	2746	Equipment	1766 1829 / 7 PERFORATOR	Witnessed By	TCM HARSTON
Max. Recorded Temp.	112	Max. Recorded Temp.	112	Production	Uliner		
Operator		Operator		Production	Uliner		
Compressive Strength	psi@	Compressive Strength	psi@	Production	Uliner		
Comment Volume	/	Comment Volume	/	Production	Uliner		
Comment Type / Weight	/	Comment Type / Weight	/	Production	Uliner		
Mud Type / Mud Wgt.	/	Mud Type / Mud Wgt.	/	Production	Uliner		
Run Number	Bit	Run Number	Bit	Production	Uliner		
	From		To	Production	Uliner		
	From		To	Production	Uliner		

Comments  
 LOG CORRELATED TO PSI COMPENSATED NUETRON LOG DATED 10-JUL-2010  
 THANK YOU FOR CHOOSING HALLIBURTON  
 YOUR CREW TODAY: K. TOWNSEND, C. NAKAGAWA, P. LEMBCKE



Company ROSETTA RESOURCES OPERATING, LP  
 Well PRICKETT 07-10  
 Field REPUBLICAN  
 County YUMA State CO