

---

**NOBLE ENERGY INC E-BUSINESS**

---

**Rulison Federal 19-41c  
RULISON  
Garfield County , Colorado**

**Cement Surface Casing**  
21-Feb-2011

**Post Job Report**

*The Road to Excellence Starts with Safety*

<b>Sold To #:</b> 345242	<b>Ship To #:</b> 2815344	<b>Quote #:</b>	<b>Sales Order #:</b> 7984011
<b>Customer:</b> NOBLE ENERGY INC E-BUSINESS		<b>Customer Rep:</b> Nielson, Dave	
<b>Well Name:</b> Rulison Federal		<b>Well #:</b> 19-41c	<b>API/UWI #:</b> 05-045-18772
<b>Field:</b> RULISON	<b>City (SAP):</b> RIFLE	<b>County/Parish:</b> Garfield	<b>State:</b> Colorado
<b>Lat:</b> N 39.433 deg. OR N 39 deg. 25 min. 59.642 secs.		<b>Long:</b> W 107.918 deg. OR W -108 deg. 4 min. 55.949 secs.	
<b>Contractor:</b> H&P 322		<b>Rig/Platform Name/Num:</b> H&P322	
<b>Job Purpose:</b> Cement Surface Casing			
<b>Well Type:</b> Development Well		<b>Job Type:</b> Cement Surface Casing	
<b>Sales Person:</b> METLI, MARSHALL		<b>Srvc Supervisor:</b> ANDREWS, ANTHONY	<b>MBU ID Emp #:</b> 321604

**Job Personnel**

HES Emp Name	Exp Hrs	Emp #	HES Emp Name	Exp Hrs	Emp #	HES Emp Name	Exp Hrs	Emp #
ANDREWS, ANTHONY Michael		321604	ARNOLD, EDWARD John		439784	COSTELDIA, BROCK James		476115
CUNNINGHAM, TANNER Wade		445660						

**Equipment**

HES Unit #	Distance-1 way	HES Unit #	Distance-1 way	HES Unit #	Distance-1 way	HES Unit #	Distance-1 way

**Job Hours**

Date	On Location Hours	Operating Hours	Date	On Location Hours	Operating Hours	Date	On Location Hours	Operating Hours
2/21/11	6	3						
<b>TOTAL</b>	<i>Total is the sum of each column separately</i>							

**Job**

**Job Times**

Formation Name	Top	Bottom	Called Out	Date	Time	Time Zone
<b>Formation Depth (MD)</b>			<b>On Location</b>	20 - Feb - 2011	19:30	MST
<b>Form Type</b>		BHST	<b>Job Started</b>	21 - Feb - 2011	00:30	MST
<b>Job depth MD</b>	1553. ft	<b>Job Depth TVD</b>	1553. ft	<b>Job Completed</b>	21 - Feb - 2011	05:06
<b>Water Depth</b>		<b>Wk Ht Above Floor</b>	. ft	<b>Departed Loc</b>	21 - Feb - 2011	06:30
<b>Perforation Depth (MD)</b>	<i>From</i>		<i>To</i>			

**Well Data**

Description	New / Used	Max pressure Psig	Size in	ID in	Weight lbm/ft	Thread	Grade	Top MD ft	Bottom MD ft	Top TVD ft	Bottom TVD ft

**Tools and Accessories**

Type	Size	Qty	Make	Depth	Type	Size	Qty	Make	Depth	Type	Size	Qty	Make
Guide Shoe					Packer					Top Plug			
Float Shoe					Bridge Plug					Bottom Plug			
Float Collar					Retainer					SSR plug set			
Insert Float										Plug Container			
Stage Tool										Centralizers			

**Miscellaneous Materials**

Gelling Agt	Conc	Surfactant	Conc	Acid Type	Qty	Conc	%
Treatment Fld	Conc	Inhibitor	Conc	Sand Type	Size	Qty	

**Fluid Data**

**Stage/Plug #: 1**

Fluid #	Stage Type	Fluid Name	Qty	Qty uom	Mixing Density lbm/gal	Yield ft3/sk	Mix Fluid Gal/sk	Rate bbl/min	Total Mix Fluid Gal/sk

Stage/Plug #: 1										
Fluid #	Stage Type	Fluid Name	Qty	Qty uom	Mixing Density lbm/gal	Yield ft <sup>3</sup> /sk	Mix Fluid Gal/sk	Rate bbl/min	Total Mix Fluid Gal/sk	
1	Fresh Water Spacer		20	bbl	.	.0	.0	.0		
2	Lead Cement	VERSACEM (TM) SYSTEM (452010)	227	sacks	12.3	2.38	13.75		13.75	
3	Tail Cement	VERSACEM (TM) SYSTEM (452010)	118	sacks	12.8	2.11	11.75		11.75	
4	Displacement		86	bbl	.	.0	.0	.0		
Calculated Values		Pressures			Volumes					
Displacement	91.9	Shut In: Instant		Lost Returns	N	Cement Slurry	140.5	Pad		
Top Of Cement	SURFACE	5 Min		Cement Returns	Y	Actual Displacement	86	Treatment		
Frac Gradient		15 Min		Spacers	20	Load and Breakdown		Total Job	226.5	
Rates										
Circulating	RIG	Mixing	5	Displacement	6.5-3	Avg. Job	5			
Cement Left In Pipe	Amount	??? ft	Reason	CUSTOMER REQUEST SEE JOB LOG						
Frac Ring # 1 @	ID	Frac ring # 2 @	ID	Frac Ring # 3 @	ID	Frac Ring # 4 @	ID			
The Information Stated Herein Is Correct				Customer Representative Signature						

*The Road to Excellence Starts with Safety*

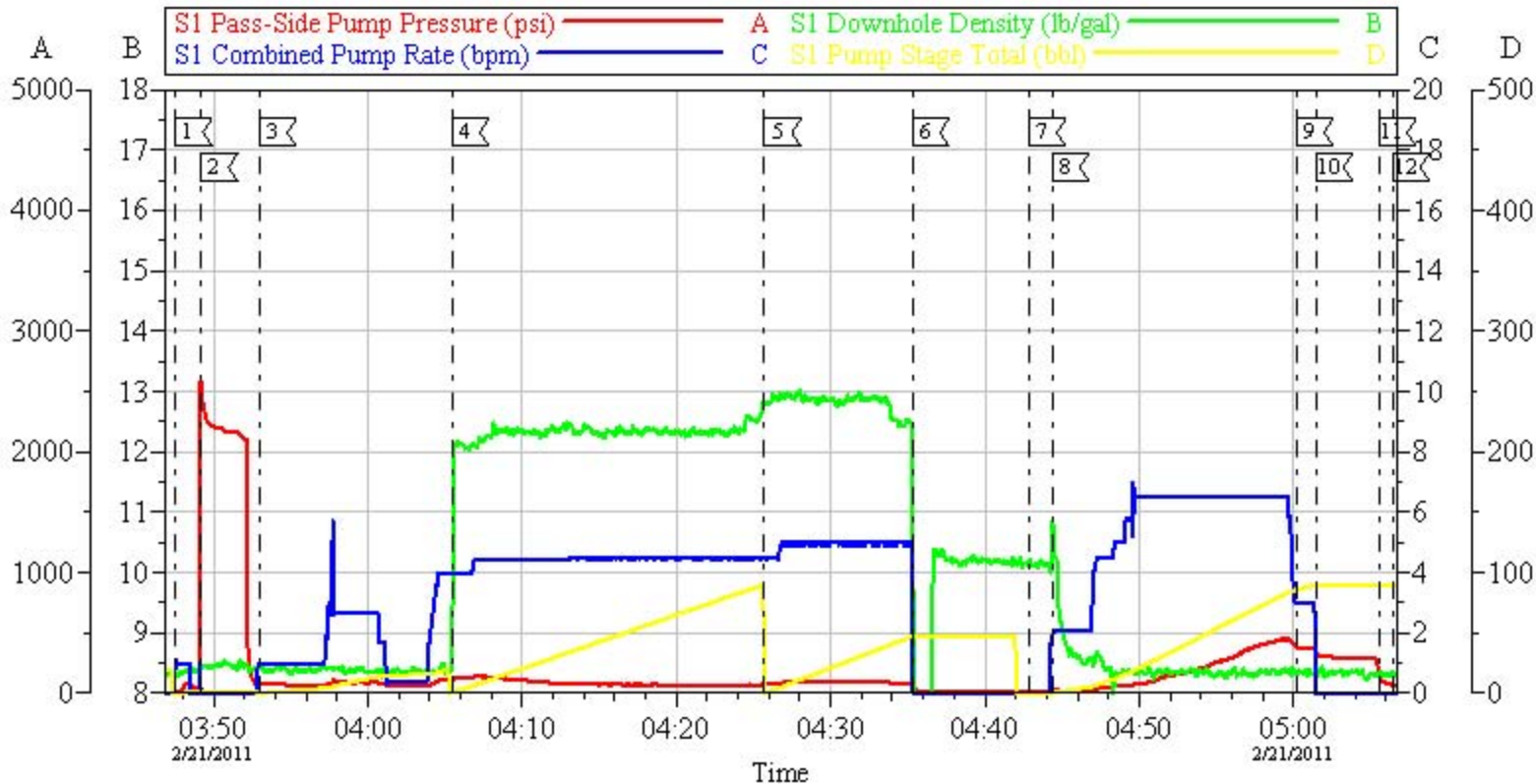
<b>Sold To #:</b> 345242	<b>Ship To #:</b> 2815344	<b>Quote #:</b>	<b>Sales Order #:</b> 7984011
<b>Customer:</b> NOBLE ENERGY INC E-BUSINESS		<b>Customer Rep:</b> Nielson, Dave	
<b>Well Name:</b> Rulison Federal		<b>Well #:</b> 19-41c	<b>API/UWI #:</b> 05-045-18772
<b>Field:</b> RULISON	<b>City (SAP):</b> RIFLE	<b>County/Parish:</b> Garfield	<b>State:</b> Colorado
<b>Legal Description:</b>			
<b>Lat:</b> N 39.433 deg. OR N 39 deg. 25 min. 59.642 secs.		<b>Long:</b> W 107.918 deg. OR W -108 deg. 4 min. 55.949 secs.	
<b>Contractor:</b> H&P 322		<b>Rig/Platform Name/Num:</b> H&P322	
<b>Job Purpose:</b> Cement Surface Casing			<b>Ticket Amount:</b>
<b>Well Type:</b> Development Well		<b>Job Type:</b> Cement Surface Casing	
<b>Sales Person:</b> METLI, MARSHALL		<b>Srvc Supervisor:</b> ANDREWS, ANTHONY	<b>MBU ID Emp #:</b> 321604

Activity Description	Date/Time	Cht #	Rate bbl/min	Volume bbl		Pressure psig		Comments
				Stage	Total	Tubing	Casing	
Call Out	02/20/2011 19:30							
Pre-Convoy Safety Meeting	02/20/2011 21:45							
Crew Leave Yard	02/20/2011 22:00							
Arrive At Loc	02/21/2011 00:30							
Assessment Of Location Safety Meeting	02/21/2011 00:35							
Other	02/21/2011 00:40							SPOT EQUIPMENT
Pre-Rig Up Safety Meeting	02/21/2011 00:45							
Rig-Up Equipment	02/21/2011 00:50							
Pre-Job Safety Meeting	02/21/2011 03:15							OFFLINES SURFACE
Start Job	02/21/2011 03:47							TD: 1563 TP:1553 SJ: 42.8 MW: 9.2 8 5/8" 32#/FT CSG IN 12 1/4" OH
Test Lines	02/21/2011 03:49							2000 PSI TEST
Pump Spacer	02/21/2011 03:53		3	20			76.0	FRESH H2O SPACER
Pump Lead Cement	02/21/2011 04:05		5	96.2			118.0	227 SKS @ 12.3 PPG 2.38 YLD 13.75 GAL/SK H2O
Pump Tail Cement	02/21/2011 04:25		5	44.3			73.0	118 SKS @ 12.8 PPG 2.11 YLD 11.75 GAL/SK H2O
Shutdown	02/21/2011 04:35							

Activity Description	Date/Time	Cht #	Rate bbl/min	Volume bbl		Pressure psig		Comments
				Stage	Total	Tubing	Casing	
Drop Plug	02/21/2011 04:42							
Pump Displacement	02/21/2011 04:44		6.5		86		102.0	FRESH H2O DISPLACEMENT. TOTAL VOLUME FOR DISP WAS CALCULATED TO BE 91.9 BBLS, SEE COMMENTS BELOW.
Slow Rate	02/21/2011 05:00		3	80			382.0	GAINED CEMENT RETURNS @ 76 GONE, PUMPED TO 86 BBLS AND SHUTDOWN
Shutdown	02/21/2011 05:01		3	86			342.0	
Check Floats	02/21/2011 05:05							FLOATS HELD.
End Job	02/21/2011 05:06							GOOD CIRCULATION THROUGHOUT JOB. PIPE WAS LEFT STATIC.
Post-Job Safety Meeting (Pre Rig-Down)	02/21/2011 05:30							THIS WAS AN OFFLINE SURFACE PIPE, NO HEAD OR QUICKLATCH USED. THERE WAS EXTREMELY LIMITED SPACE TO TAKE RETURNS SO CUSTOMER REQUESTED THAT WE SHUTDOWN WHEN WE GOT 5-10 BBLS OF GOOD CEMENT TO SURFACE EVEN IF WE DONT BUMP PLUG.
Rig-Down Equipment	02/21/2011 05:35							CUSTOMER ALSO AGREED TO HAVE US WASH UP ON TOP OF PLUG TO MINIMIZE WASHUP AFTER JOB.1 ADD HOUR CHARGED.
Pre-Convoy Safety Meeting	02/21/2011 06:25							

Activity Description	Date/Time	Cht #	Rate bbl/ min	Volume bbl		Pressure psig		Comments
				Stage	Total	Tubing	Casing	
Crew Leave Location	02/21/2011 06:30							THANK YOU FOR CHOOSING HALLIBURTON CEMENTING OF GRAND JUNCTION, COLORADO ANTHONY ANDREWS AND CREW

HP 322 - NOBLE  
8 5/8" OFFLINE SURFACE



Local Event Log

Intersection	SPPP	Intersection	SPPP	Intersection	SPPP
1 START JOB	03:47:32 0.741	2 TEST LINES	03:49:11 2580	3 PUMP SPACER	03:53:00 76.25
4 PUMP LEAD CEMENT	04:05:30 118.5	5 PUMP TAIL CEMENT	04:25:42 72.00	6 SHUTDOWN	04:35:18 63.02
7 DROP PLUG	04:42:53 15.00	8 PUMP DISPLACEMENT	04:44:22 17.67	9 SLOW RATE	05:00:12 382.0
10 SHUTDOWN	05:01:27 342.5	11 CHECK FLOATS	05:05:35 145.6	12 END JOB	05:06:27 70.00

Customer: NOBLE ENERGY  
Well #: RF 19-41C  
Customer Rep: KENNY WILKERSON

Job Date: 21-Feb-2011  
Job Type: SURFACE  
Pump Truck: ELITE 1/ TANNER CUNNINGHAM

Sales Order #: 7984011  
ADC Used: YES  
Supervisor: ANTHONY ANDREWS

OptiCem v6.3.4  
21-Feb-11 05:25