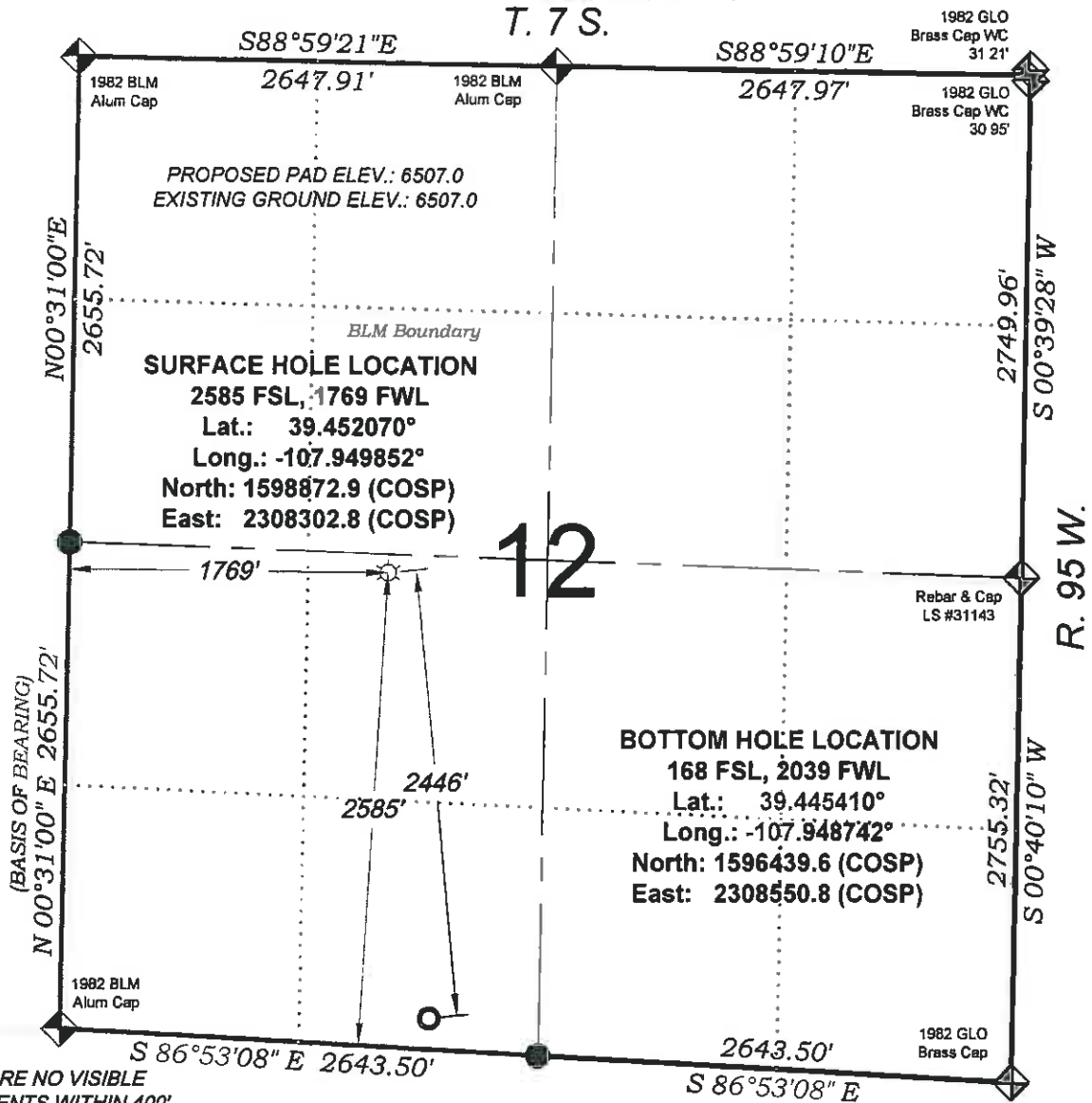


Federal PA 524-12

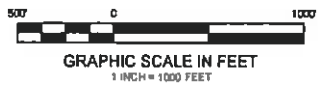
T. 7 S.



12

R. 95 W.

THERE ARE NO VISIBLE IMPROVEMENTS WITHIN 400' OF THIS LOCATION



- LEGEND -

- FIELD LOCATED SECTION MONUMENTS AS DESCRIBED
- FIELD SURVEYED WELL LOCATION
- CALCULATED BOTTOM HOLE LOCATION
- CALCULATED SECTION CORNER LOCATION

NOTES

- 1) ELEVATIONS BASED ON N.A.V.D. 1988 PUBLISHED COORDINATES.
- 2) LATITUDES AND LONGITUDES ARE BASE ON NAD 83, PUBLISHED COORDINATES
- 3) STATE PLANE COORDINATES ARE BASED ON COLORADO CENTRAL ZONE, U.S. SURVEY FEET.
- 4) ELEVATION MASK SET TO 15"
- 5) GPS OPERATOR J. KIRKPATRICK, OBSERVED A PDOP OF 1.4 FOR SURVEY POINT NUMBER 28948.
- 6) SURFACE AND BOTTOM HOLE LOCATIONS ARE MEASURED 90° FROM SECTION LINES.

SURVEYORS STATEMENT

I, MICHAEL J. LANGHORNE, A REGISTERED LAND SURVEYOR IN THE STATE OF COLORADO DO HEREBY CERTIFY THAT THE SURVEY SHOWN HEREON WAS PREPARED UNDER MY DIRECT SUPERVISION AND HAS BEEN STAKED ON THE GROUND AS SHOWN ON THE PLAT AND CHECKING THAT THIS MAP IS A TRUE REPRESENTATION THEREOF.

Michael J. Langhorne

MICHAEL J. LANGHORNE, COLORADO REGISTRATION NO. 36572
FOR AND ON BEHALF OF
BOOKCLIFF SURVEY SERVICES, INC.

REFERENCES

- 1) DEPENDENT RESURVEY T. 7 S., R. 95 W., 6 th P.M (GLO PLAT)
- 2) U.S.G.S. QUAD: RULISON, CO

WELL LOCATION PLAT Prepared for:

Williams Williams Production, RMT

NE1/4 SW1/4, SECTION 12
T. 7 S., R. 95 W. of the 6th. P.M.
GARFIELD COUNTY, COLORADO

105 East Trinchera
Rt. 66, Colorado 81650
Ph. (970) 625-1330
Fax (970) 625-2773



SURVEY DATE: 4/26/10
MAP DATE: 6/30/10
SCALE: 1" = 1000'
PLAT: 1 of 1
PROJECT: Williams