

Rangely Weber Sand Unit

PURDY 3X1 Current Wellbore

03/15/11

Well Details:	
STATE & CO	CO - Rio Blanco
TWNS & RNG	T1N & R102W
SECTION	(NENE) 1
API	05-103-0870300
CHEVNO	AM9737

Casing Details:		P&A: PUR3X1 - CS39
Type	Depth	
KB	5231	
GL	5217	
? in. ? #/ft. ?	0 - ?, ? sxs cmt	
9-5/8" in. 36 #/ft. K55	0 - 2965', 450 sxs cmt	
7" in. 26 #/ft. K55	0 - 1145'	
7" in. 23 #/ft. K55	1145 - 6472', 1500 sxs cmt	
in. #/ft.	- ', sxs cmt	
Top Perf	5972	
Btm Perf	6375	
PBTD:	6435	
TD:	6472	

Formation	Depth
Niobrara	
Frontier	3145
Frontier Snd	3239
Mowry	3429
Dakota	3508
Morrison	3590
Curtis	4185
Entrada	
Carmel	4480
Navajo	
Chinle	5086
Shinarump	5239
Moenkopi	
Weber	5950

COGCC Regulations: Set Isolation Packer
within 300' of perfs or 100' above liner

GOC_CALC	5561	
		FT
Weber 1a	5948	165
Weber 2	6114	
Weber 3a	6128	247
Weber 4	6219	
Weber 5a	6249	
Weber 6	6357	
Weber 7a	6358	
Weber 8		
Weber 9a		
Weber 10		
Weber 11a		
		412
OWC_CALC	6381	

KB 5231

GL 5217

? in. ? #/ft. ?

0 - ?, ? sxs cmt

7" in. 26 #/ft. K55

0 - 1145'

9-5/8" in. 36 #/ft. K55

0 - 2965', 450 sxs cmt

7" in. 23 #/ft. K55

1145 - 6472', 1500 sxs cmt

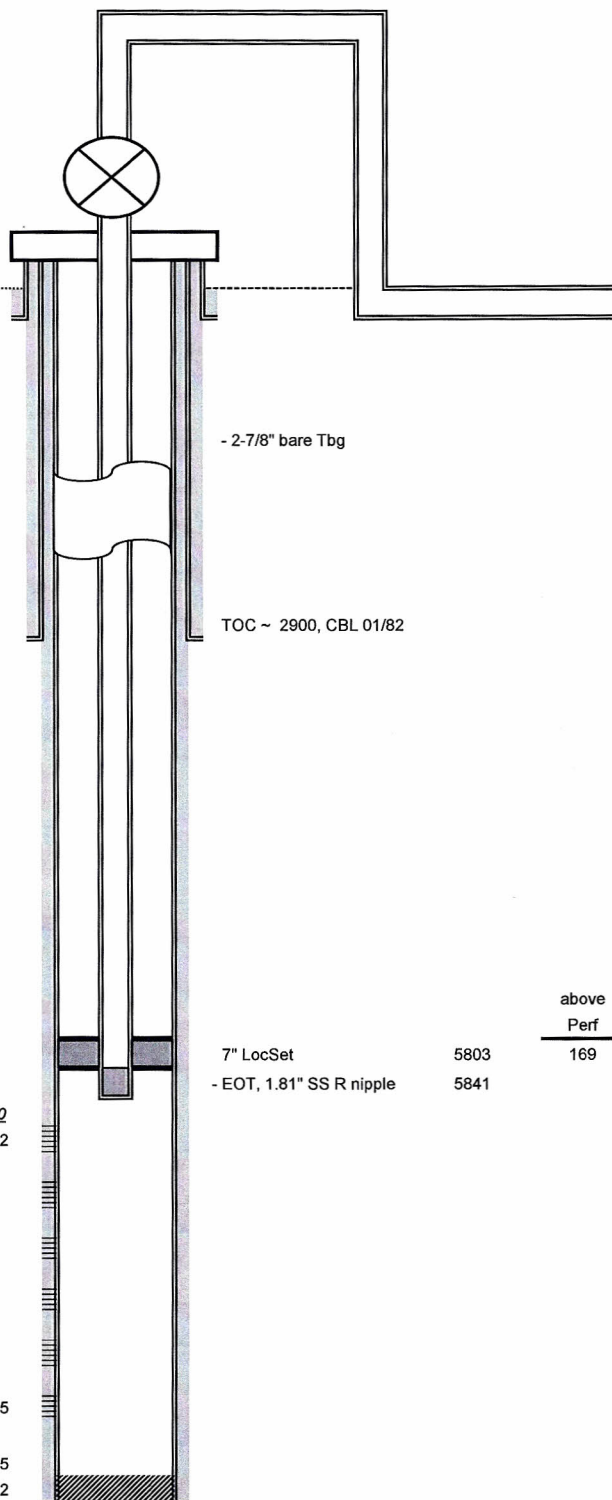
Weber 5950

Top Perf 5972

Btm Perf 6375

PBTD: 6435

TD: 6472



- 2-7/8" bare Tbg

TOC ~ 2900, CBL 01/82

7" LocSet 5803

- EOT, 1.81" SS R nipple 5841

above
Perf
169

Notes:

1- 09/08: PLS run 1.81" RZG plug @ 5831',

2- 11/81: Set 7" Casing at 6470', pump 1500 sxs expanding cement, drop plug & displace w/ 251 bbls (cement returns to surface at 170 bbl)s.

3- 08/81: Set 9-5/8" casing at 2965', pumped 450 sxs Econolite + 150 sxs G cement w/ 2% CaCl2., returned 61 bbls to pit, RIH w/ 90' of 1" pipe and topped off with 75 sxs G cement w/ 2% CaCl2.