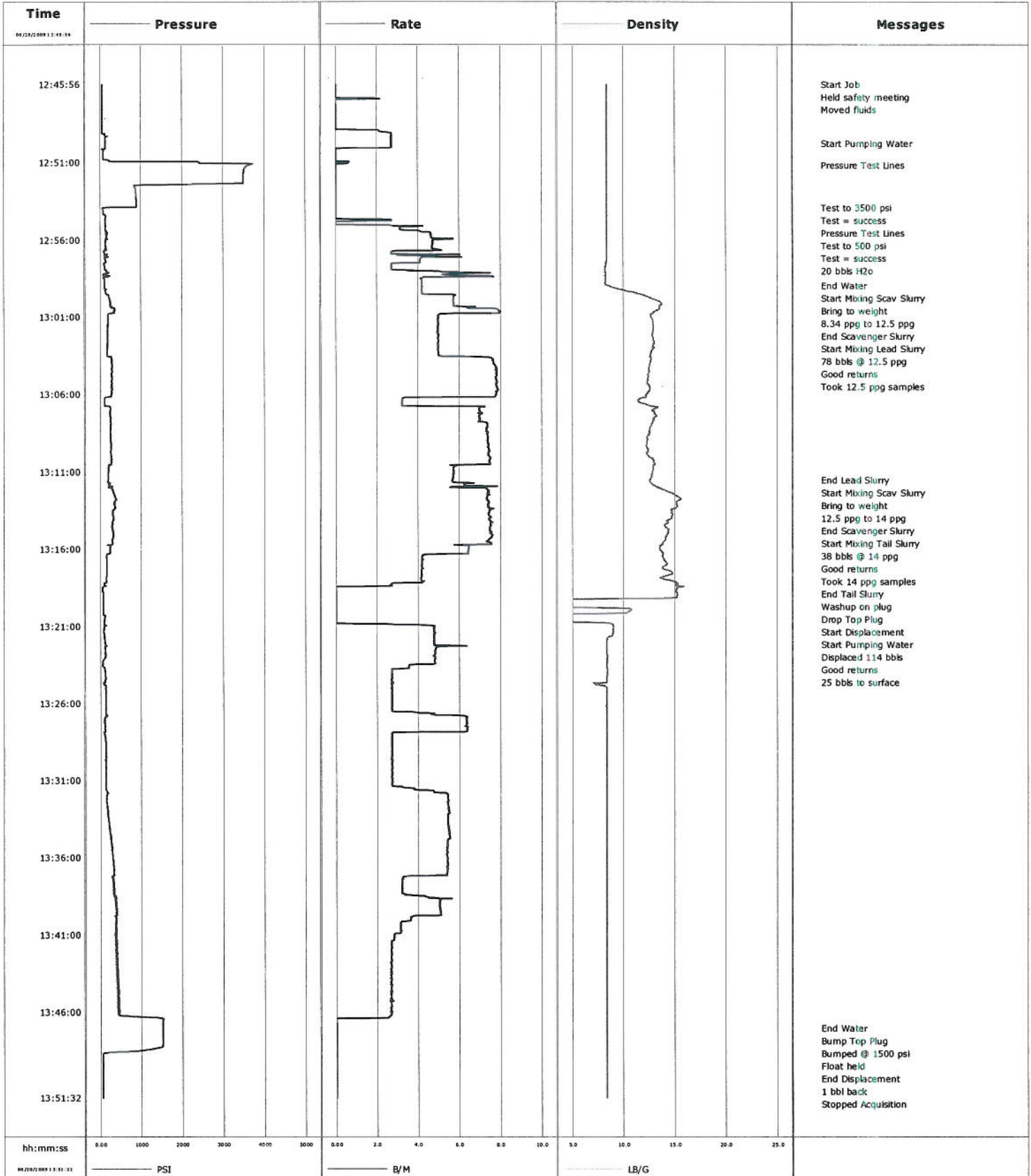


Well	MF18A-4 N04 696	Client	ENCANA
Field	N. PARACHUTE	SIR No.	B2FW-00042
Engineer	RUSSELL BOLDING	Job Type	9 5/8 SURFACE
Country	United States	Job Date	06-20-2009



Customer	Job Number
----------	------------

Well	Location (legal)	Schlumberger Location	Job Start Jun/20/2009
Field	Formation Name/Type	Deviation	Bit Size
County	State/Province	BHP	BHST
Well Master	API/UWI	BHCT	Pore Press. Gradient
Rig Name	Drilled For	Service Via	Casing/Liner
Offshore Zone	Well Class	Well Type	Depth, Size, Weight, Grade, Thread
Drilling Fluid Type	Max. Density	Plastic Viscosity	Tubing/Drill Pipe
Service Line Cementing	Job Type		Depth, Size, Weight, Grade, Thread
Max. Allowed Tub. Press	Max. Allowed Ann. Press	WH Connection	Perforations/Open Hole
Service Instructions			Top, Bottom, No. of Shots, Total Interval
			Diameter
Casing/Tubing Secured <input type="checkbox"/>		1 Hole Vol. Circulated prior to Cement <input type="checkbox"/>	Casing Tools, Squeeze Job
Lift Pressure	Pipe Rotated <input type="checkbox"/>	Pipe Reciprocated <input type="checkbox"/>	Shoe Type, Squeeze Type
No. Centralizers	Top Plugs	Bottom Plugs	Shoe Depth, Tool Type
Cement Head Type			Stage Tool Type, Tool Depth
Job Scheduled For Jun/20/2009	Arrived on Location Jun/20/2009	Leave Location Jun/20/2009	Stage Tool Depth, Tail Pipe Size
			Collar Type, Tail Pipe Depth
			Collar Depth, Sqz. Total Vol.

Date	Time 24-hr clock	Treating Pressure PSI	Flow Rate B/M	Density LB/G	Volume BBL	Message
06/20/2009	11:45:11					Started Acquisition
06/20/2009	12:45:56					Start Job
06/20/2009	12:45:56	59	0.0	8.38	0.0	
06/20/2009	12:45:57					Held safety meeting
06/20/2009	12:45:57					Moved fluids
06/20/2009	12:45:57	59	0.0	8.38	0.0	
06/20/2009	12:46:41	59	0.0	8.38	0.0	
06/20/2009	12:48:11	59	0.0	8.38	0.1	
06/20/2009	12:49:41	132	2.7	8.38	2.2	
06/20/2009	12:49:46					Start Pumping Water
06/20/2009	12:49:46	132	2.7	8.38	2.4	
06/20/2009	12:51:09					Pressure Test Lines
06/20/2009	12:51:09	3615	0.0	8.37	3.2	
06/20/2009	12:51:11	3588	0.0	8.37	3.2	
06/20/2009	12:52:41	864	0.0	8.38	3.2	
06/20/2009	12:53:55					Test to 3500 psi
06/20/2009	12:53:55					Test = success
06/20/2009	12:53:55	68	0.0	8.38	3.2	
06/20/2009	12:53:57					Pressure Test Lines
06/20/2009	12:53:57	63	0.0	8.38	3.2	
06/20/2009	12:53:58					Test to 500 psi

Well		Field		Job Start Jun/20/2009		Customer		Job Number	
Date	Time 24-hr clock	Treating Pressure PSI	Flow Rate B/M	Density LB/G	Volume BBL	Message			
06/20/2009	12:53:58	81	0.0	8.38	3.2				
06/20/2009	12:54:11	77	0.0	8.38	3.2				
06/20/2009	12:55:41	155	4.6	8.38	6.1				
06/20/2009	12:57:00					20 bbls H2o			
06/20/2009	12:57:00	132	3.9	8.38	11.8				
06/20/2009	12:57:11	118	4.1	8.38	12.7				
06/20/2009	12:58:41	109	4.2	8.25	19.0				
06/20/2009	12:58:58					End Water			
06/20/2009	12:58:58	109	4.2	8.57	20.2				
06/20/2009	12:58:59					Start Mixing Scav Slurry			
06/20/2009	12:58:59	114	4.2	8.65	20.3				
06/20/2009	12:59:01					Bring to weight			
06/20/2009	12:59:01					8.34 ppg to 12.5 ppg			
06/20/2009	12:59:01	109	4.2	8.80	20.4				
06/20/2009	13:00:11	251	5.7	13.71	5.7				
06/20/2009	13:00:52					End Scavenger Slurry			
06/20/2009	13:00:52					Start Mixing Lead Slurry			
06/20/2009	13:00:52	200	5.0	12.64	10.3				
06/20/2009	13:00:53					78 bbls @ 12.5 ppg			
06/20/2009	13:00:53					Good returns			
06/20/2009	13:00:53	196	5.0	12.64	10.4				
06/20/2009	13:00:54					Took 12.5 ppg samples			
06/20/2009	13:00:54	196	5.0	12.64	10.5				
06/20/2009	13:01:41	182	5.0	12.93	14.4				
06/20/2009	13:03:11	173	5.0	12.74	21.9				
06/20/2009	13:04:41	274	7.8	12.40	32.4				
06/20/2009	13:06:11	123	6.2	12.22	44.1				
06/20/2009	13:07:41	255	7.0	12.94	52.4				
06/20/2009	13:09:11	255	7.4	12.24	63.4				
06/20/2009	13:10:41	200	5.7	12.88	74.3				
06/20/2009	13:11:34					End Lead Slurry			
06/20/2009	13:11:34	191	5.6	12.52	79.4				
06/20/2009	13:11:35					Start Mixing Scav Slurry			
06/20/2009	13:11:35	191	5.6	12.50	79.5				
06/20/2009	13:11:37					Bring to weight			
06/20/2009	13:11:37	187	5.6	12.50	79.6				
06/20/2009	13:11:38					12.5 ppg to 14 ppg			
06/20/2009	13:11:38	191	5.6	12.53	79.7				
06/20/2009	13:12:07					End Scavenger Slurry			
06/20/2009	13:12:07	287	7.3	13.71	3.1				
06/20/2009	13:12:08					Start Mixing Tail Slurry			
06/20/2009	13:12:08	292	7.3	13.75	3.2				
06/20/2009	13:12:10					38 bbls @ 14 ppg			
06/20/2009	13:12:10					Good returns			
06/20/2009	13:12:10					Took 14 ppg samples			
06/20/2009	13:12:10	292	7.3	13.99	3.5				
06/20/2009	13:12:11	306	7.4	14.04	3.6				
06/20/2009	13:13:41	292	7.4	14.72	14.7				
06/20/2009	13:15:11	320	7.6	14.16	25.9				
06/20/2009	13:16:41	155	4.2	13.96	35.2				
06/20/2009	13:17:45					End Tail Slurry			
06/20/2009	13:17:45	150	4.2	13.98	39.7				
06/20/2009	13:17:48					Washup on plug			
06/20/2009	13:17:48	150	4.1	13.74	39.9				

Well		Field		Job Start		Customer		Job Number	
				Jun/20/2009					
Date	Time 24-hr clock	Treating Pressure PSI	Flow Rate B/M	Density LB/G	Volume BBL	Message			
06/20/2009	13:19:41	68	0.0	-0.00	2.2				
06/20/2009	13:20:15					Drop Top Plug			
06/20/2009	13:20:15	81	0.0	0.98	2.2				
06/20/2009	13:20:16					Start Displacement			
06/20/2009	13:20:16	86	0.0	0.66	2.2				
06/20/2009	13:20:17					Start Pumping Water			
06/20/2009	13:20:17	118	0.0	0.43	2.2				
06/20/2009	13:20:18					Displaced 114 bbls			
06/20/2009	13:20:18	114	0.0	0.27	2.2				
06/20/2009	13:20:19					Good returns			
06/20/2009	13:20:19					25 bbls to surface			
06/20/2009	13:20:19	118	0.0	0.17	2.2				
06/20/2009	13:21:11	91	4.8	9.00	3.7				
06/20/2009	13:22:41	123	4.8	8.38	11.0				
06/20/2009	13:24:11	123	2.7	8.41	16.9				
06/20/2009	13:25:41	132	2.7	8.39	20.9				
06/20/2009	13:27:11	104	6.3	8.38	26.8				
06/20/2009	13:28:41	127	2.7	8.38	33.4				
06/20/2009	13:30:11	136	2.7	8.38	37.4				
06/20/2009	13:31:41	155	4.8	8.38	41.8				
06/20/2009	13:33:11	178	5.4	8.38	49.8				
06/20/2009	13:34:41	242	5.5	8.38	58.0				
06/20/2009	13:36:11	306	5.4	8.38	66.1				
06/20/2009	13:37:41	324	3.2	8.38	73.0				
06/20/2009	13:39:11	384	5.0	8.38	79.1				
06/20/2009	13:40:41	384	3.1	8.38	85.1				
06/20/2009	13:42:11	406	2.7	8.38	89.2				
06/20/2009	13:43:41	393	2.7	8.38	93.2				
06/20/2009	13:45:11	443	2.7	8.38	97.2				
06/20/2009	13:46:41	1514	0.0	8.38	100.4				
06/20/2009	13:47:04					End Water			
06/20/2009	13:47:04	1510	0.0	8.38	100.4				
06/20/2009	13:47:06					Bump Top Plug			
06/20/2009	13:47:06	1510	0.0	8.38	100.4				
06/20/2009	13:47:08					Bumped @ 1500 psi			
06/20/2009	13:47:08					Float held			
06/20/2009	13:47:08	1510	0.0	8.38	100.4				
06/20/2009	13:47:10					End Displacement			
06/20/2009	13:47:10	1510	0.0	8.38	100.4				
06/20/2009	13:47:11					1 bbl back			
06/20/2009	13:47:11	1510	0.0	8.38	100.4				
06/20/2009	13:48:11	1505	0.0	8.38	100.4				
06/20/2009	13:49:41	63	0.0	8.38	100.4				
06/20/2009	13:51:11	63	0.0	8.38	100.4				

Well	Field	Job Start Jun/20/2009	Customer	Job Number
------	-------	--------------------------	----------	------------

Post Job Summary

Average Pump Rates,				Volume of Fluid Injected,			
Slurry	N2	Mud	Maximum Rate	Total Slurry	Mud	Spacer	N2
Treating Pressure Summary,				Breakdown Fluid			
Maximum	Final	Average	Bump Plug to	Breakdown	Type	Volume	Density
Avg. N2 Percent	Designed Slurry Volume		Displacement	Mix Water Temp	Cement Circulated to Surface? <input type="checkbox"/>	Volume	
					Washed Thru Perfs <input type="checkbox"/>	To	
Customer or Authorized Representative			Schumberger Supervisor		Circulation Lost <input type="checkbox"/>	Job Completed <input type="checkbox"/>	
					-		

Well		Field		Job Start		Customer		Job Number	
EF03DD19B5951		N. PARACHUTE		Jun/14/2009		ENCANA		B21J-00046	
Date	Time 24-hr clock	Treating Pressure PSI	Flow Rate B/H	Density LB/G	Volume BBL	Message			
06/14/2009	15:38:24	274	5.1	13.06	138.6				
06/14/2009	15:38:54	355	6.4	13.07	141.5				
06/14/2009	15:39:24	502	7.5	13.14	145.0				
06/14/2009	15:39:54	494	7.6	13.13	148.8				
06/14/2009	15:40:24	480	7.6	13.13	152.6				
06/14/2009	15:40:54	499	7.6	13.15	156.3				
06/14/2009	15:41:24	493	7.5	13.15	160.1				
06/14/2009	15:41:54	474	7.5	13.14	163.9				
06/14/2009	15:42:24	459	7.5	13.13	167.6				
06/14/2009	15:42:54	492	7.6	13.09	171.4				
06/14/2009	15:43:24	474	7.6	13.10	175.2				
06/14/2009	15:43:54	464	7.6	13.09	179.0				
06/14/2009	15:44:24	524	7.5	13.11	182.7				
06/14/2009	15:44:54	554	7.5	13.08	186.5				
06/14/2009	15:45:24	531	7.4	13.04	190.2				
06/14/2009	15:45:54	474	7.5	13.01	193.9				
06/14/2009	15:46:24	507	7.5	13.04	197.7				
06/14/2009	15:46:54	530	7.5	12.98	201.4				
06/14/2009	15:47:24	546	7.5	12.88	205.1				
06/14/2009	15:47:54	579	7.5	12.90	208.9				
06/14/2009	15:48:24	602	7.5	12.99	212.7				
06/14/2009	15:48:54	577	7.5	13.07	216.4				
06/14/2009	15:49:24	606	7.5	13.13	220.2				
06/14/2009	15:49:54	589	7.5	13.15	224.0				
06/14/2009	15:50:24	627	7.5	13.18	227.7				
06/14/2009	15:50:54	671	7.7	13.22	231.5				
06/14/2009	15:51:24	615	7.7	13.26	235.4				
06/14/2009	15:51:54	637	7.7	13.26	239.2				
06/14/2009	15:52:24	612	7.7	13.25	243.1				
06/14/2009	15:52:54	602	7.7	13.26	247.0				
06/14/2009	15:53:24	608	7.7	13.25	250.8				
06/14/2009	15:53:54	642	7.7	13.24	254.7				
06/14/2009	15:54:24	640	7.7	13.24	258.6				
06/14/2009	15:54:54	594	7.7	13.20	262.4				
06/14/2009	15:55:24	628	7.7	13.23	266.3				
06/14/2009	15:55:54	635	7.7	13.18	270.2				
06/14/2009	15:56:24	590	7.8	13.09	274.0				
06/14/2009	15:56:54	568	7.7	13.11	277.9				
06/14/2009	15:57:24	603	7.7	13.23	281.8				
06/14/2009	15:57:54	610	7.7	13.15	285.6				
06/14/2009	15:58:24	589	7.7	13.09	289.5				
06/14/2009	15:58:54	587	7.6	13.02	293.3				
06/14/2009	15:59:24	338	6.4	12.81	296.9				
06/14/2009	15:59:54	340	6.3	12.96	300.1				
06/14/2009	16:00:24	353	6.4	12.91	303.3				
06/14/2009	16:00:54	339	6.4	12.87	306.5				
06/14/2009	16:01:24	185	4.5	13.34	309.0				
06/14/2009	16:01:54	192	4.6	13.09	311.3				
06/14/2009	16:02:20					End Tall Slurry			
06/14/2009	16:02:20	229	4.5	13.86	313.3				
06/14/2009	16:02:24					Washup 20 bbl @ 6 BPM			
06/14/2009	16:02:24					Add sugar to displacement			
06/14/2009	16:02:24	229	4.5	13.78	313.6				
06/14/2009	16:02:54	208	4.6	13.26	315.9				

Well		Field		Job Start		Customer		Job Number	
EF03DD19B5951		N. PARACHUTE		July/14/2009		ENCANA		B21J-00046	
Date	Time 24-hr clock	Treating Pressure PSI	Flow Rate B/H	Density LB/G	Volume BBL	Message			
06/14/2009	16:03:54	9	0.0	13.94	316.5				
06/14/2009	16:04:24	18	0.1	13.78	316.5				
06/14/2009	16:04:54	18	0.1	12.03	316.6				
06/14/2009	16:05:24	45	0.0	12.06	316.6				
06/14/2009	16:05:54	318	6.5	9.03	318.8				
06/14/2009	16:06:24	144	6.3	8.38	321.9				
06/14/2009	16:06:54	329	6.4	8.82	325.1				
06/14/2009	16:07:24	92	3.9	9.37	328.1				
06/14/2009	16:07:54	253	5.7	8.43	331.0				
06/14/2009	16:08:24	265	5.8	8.40	333.8				
06/14/2009	16:08:54	117	5.1	8.38	336.7				
06/14/2009	16:09:24	1	0.0	8.38	337.0				
06/14/2009	16:09:54	57	3.8	8.33	337.9				
06/14/2009	16:10:24	81	4.7	8.38	340.0				
06/14/2009	16:10:54	103	5.5	8.38	342.5				
06/14/2009	16:11:24	134	6.5	8.36	345.6				
06/14/2009	16:11:54	299	6.4	8.34	348.8				
06/14/2009	16:12:18					Drop Top Plug			
06/14/2009	16:12:18	367	6.4	8.34	351.3				
06/14/2009	16:12:19					Start Displacement			
06/14/2009	16:12:19	385	6.4	8.34	351.4				
06/14/2009	16:12:21					Displaced 148 bbis H2o			
06/14/2009	16:12:21	390	6.4	8.34	351.7				
06/14/2009	16:12:24	421	6.4	8.34	0.3				
06/14/2009	16:12:54	465	6.4	8.34	3.5				
06/14/2009	16:13:24	545	6.4	8.34	6.7				
06/14/2009	16:13:54	573	6.4	8.34	9.9				
06/14/2009	16:14:24	607	6.4	8.34	13.1				
06/14/2009	16:14:54	646	6.4	8.34	16.2				
06/14/2009	16:15:24	746	6.4	8.34	19.4				
06/14/2009	16:15:54	793	6.4	8.34	22.6				
06/14/2009	16:16:24	781	6.3	8.34	25.8				
06/14/2009	16:16:54	874	6.3	8.34	29.0				
06/14/2009	16:17:24	922	6.3	8.34	32.1				
06/14/2009	16:17:54	967	6.3	8.34	35.3				
06/14/2009	16:18:24	1017	6.3	8.34	38.5				
06/14/2009	16:18:54	1023	6.3	8.34	41.6				
06/14/2009	16:19:24	1054	6.3	8.34	44.8				
06/14/2009	16:19:54	1175	6.3	8.34	48.0				
06/14/2009	16:20:24	1233	6.3	8.34	51.1				
06/14/2009	16:20:54	1245	6.3	8.34	54.3				
06/14/2009	16:21:24	1259	6.3	8.34	57.5				
06/14/2009	16:21:54	1370	6.3	8.34	60.6				
06/14/2009	16:22:24	1394	6.3	8.34	63.8				
06/14/2009	16:22:54	1417	6.3	8.34	66.9				
06/14/2009	16:23:24	1477	6.3	8.34	70.1				
06/14/2009	16:23:54	1560	6.3	8.34	73.2				
06/14/2009	16:24:24	1587	6.3	8.34	76.4				
06/14/2009	16:24:54	1617	6.3	8.34	79.5				
06/14/2009	16:25:24	1714	6.3	8.34	82.7				
06/14/2009	16:25:54	1750	6.3	8.34	85.8				
06/14/2009	16:26:24	1789	6.3	8.34	89.0				
06/14/2009	16:26:54	1818	6.3	8.34	92.1				
06/14/2009	16:27:24	1906	6.3	8.34	95.3				

Well		Field		Job Start		Customer		Job Number	
EF03DD19B5951		N. PARACHUTE		Jun/14/2009		ENCANA		B211-00046	
Date	Time 24-hr clock	Treating Pressure PSI	Flow Rate B/H	Density LB/G	Volume BBL	Message			
06/14/2009	16:28:24	2034	6.3	8.34	101.6				
06/14/2009	16:28:54	2012	6.3	8.34	104.7				
06/14/2009	16:29:24	2071	6.3	8.34	107.8				
06/14/2009	16:29:54	2164	6.3	8.34	111.0				
06/14/2009	16:30:00					Good returns			
06/14/2009	16:30:00	2196	6.3	8.34	111.6				
06/14/2009	16:30:24	2212	6.3	8.34	114.1				
06/14/2009	16:30:54	2115	4.4	8.34	116.9				
06/14/2009	16:31:24	2039	4.4	8.34	119.1				
06/14/2009	16:31:54	2061	4.4	8.33	121.3				
06/14/2009	16:32:24	2124	4.4	8.34	123.5				
06/14/2009	16:32:54	2194	4.4	8.33	125.7				
06/14/2009	16:33:24	2031	2.0	8.34	126.8				
06/14/2009	16:33:54	2047	2.0	8.33	127.8				
06/14/2009	16:34:24	2106	2.0	8.33	128.8				
06/14/2009	16:34:54	2094	2.0	8.33	129.8				
06/14/2009	16:35:24	2159	2.0	8.33	130.7				
06/14/2009	16:35:54	2121	2.0	8.33	131.7				
06/14/2009	16:36:24	2194	2.0	8.33	132.7				
06/14/2009	16:36:54	2210	2.0	8.33	133.7				
06/14/2009	16:37:24	2891	0.8	8.34	134.6				
06/14/2009	16:37:28					Bump Top Plug			
06/14/2009	16:37:28	2856	0.1	8.33	134.7				
06/14/2009	16:37:29					Bumped @ 3000 psi			
06/14/2009	16:37:29	3028	0.0	8.33	134.7				
06/14/2009	16:37:30					Float held			
06/14/2009	16:37:30	3028	0.0	8.33	134.7				
06/14/2009	16:37:32					End Displacement			
06/14/2009	16:37:32	2873	0.0	8.34	134.7				
06/14/2009	16:37:54	2867	0.0	8.33	134.7				
06/14/2009	16:38:24	2882	0.0	8.34	134.7				
06/14/2009	16:38:54	2909	0.0	8.33	134.7				
06/14/2009	16:39:24	2891	0.0	8.34	134.7				
06/14/2009	16:39:54	688	0.0	8.34	134.7				
06/14/2009	16:40:24	5	0.0	8.34	134.7				
06/14/2009	16:40:41					Stopped Acquisition			

Post Job Summary

Average Pump Rates,				Volume of Fluid Injected,			
Slurry	N2	Mud	Maximum Rate	Total Slurry	Mud	Spacer	N2
Treating Pressure Summary,				Breakdown Fluid			
Maximum	Final	Average	Bump Plug to 1947	Breakdown	Type	Volume	Density
Avg. N2 Percent		Designed Slurry Volume 485.0 bbl		Displacement		Mix Water Temp 72 degF	
Customer or Authorized Representative IRA COX				Schumberger Supervisor RUSSELL BOLDING		Cement Circulated to Surface? <input type="checkbox"/>	
						Volume	
						Washed Thru Perfs <input type="checkbox"/>	
						To	
						Circulation Lost <input type="checkbox"/>	
						Job Completed <input type="checkbox"/>	