

**XTO ENERGY INC.,  
HOCKER #4-35 VICINITY MAP  
SURFACE HOLE: 945' FNL, 1,210,' FEL  
SECTION 35, T-33-N, R-07-W, N.M.P.M.,  
LA PLATA COUNTY, COLORADO**

**XTO ENERGY INC.  
HOCKER #4-35  
LAT: 37.06520° N  
LONG: 107.57350° W NAD 83  
ELEVATION AT STAKE = 6,343' NAVD88**

1 inch equals 4,000 feet  
0 2,000 4,000 Feet

XTO032 VICINITY MAP.MXD 5/11/10

**JMAS**  
JOHNSON MAPPING  
AND SURVEYING, LLC  
PO BOX 2174,  
FARMINGTON NM 87499-2174

**XTO ENERGY INC.,  
HOCKER #4-35 VICINITY MAP  
SURFACE HOLE: 945' FNL, 1,210,' FEL  
SECTION 35, T-33-N, R-07-W, N.M.P.M.,  
LA PLATA COUNTY, COLORADO**

**XTO ENERGY INC.  
HOCKER #4-35  
LAT: 37.06520° N  
LONG: 107.57350° W NAD 83  
ELEVATION AT STAKE = 6,343' NAVD88**

1 inch equals 4,000 feet  
0 2,000 4,000 Feet

XTO032 VICINITY MAP.MXD 5/11/10

**JMAS**  
JOHNSON MAPPING  
AND SURVEYING, LLC  
PO BOX 2174,  
FARMINGTON NM 87499-2174

**XTO ENERGY INC.,  
HOCKER #4-35 VICINITY MAP  
SURFACE HOLE: 945' FNL, 1,210,' FEL  
SECTION 35, T-33-N, R-07-W, N.M.P.M.,  
LA PLATA COUNTY, COLORADO**

**XTO ENERGY INC.  
HOCKER #4-35  
LAT: 37.06520° N  
LONG: 107.57350° W NAD 83  
ELEVATION AT STAKE = 6,343' NAVD88**

1 inch equals 4,000 feet  
0 2,000 4,000 Feet

XTO032 VICINITY MAP.MXD 5/11/10

**JMAS**  
JOHNSON MAPPING  
AND SURVEYING, LLC  
PO BOX 2174,  
FARMINGTON NM 87499-2174

**XTO ENERGY INC.,  
HOCKER #4-35 VICINITY MAP  
SURFACE HOLE: 945' FNL, 1,210,' FEL  
SECTION 35, T-33-N, R-07-W, N.M.P.M.,  
LA PLATA COUNTY, COLORADO**

**XTO ENERGY INC.  
HOCKER #4-35  
LAT: 37.06520° N  
LONG: 107.57350° W NAD 83  
ELEVATION AT STAKE = 6,343' NAVD88**

1 inch equals 4,000 feet  
0 2,000 4,000 Feet

XTO032 VICINITY MAP.MXD 5/11/10

**JMAS**  
JOHNSON MAPPING  
AND SURVEYING, LLC  
PO BOX 2174,  
FARMINGTON NM 87499-2174

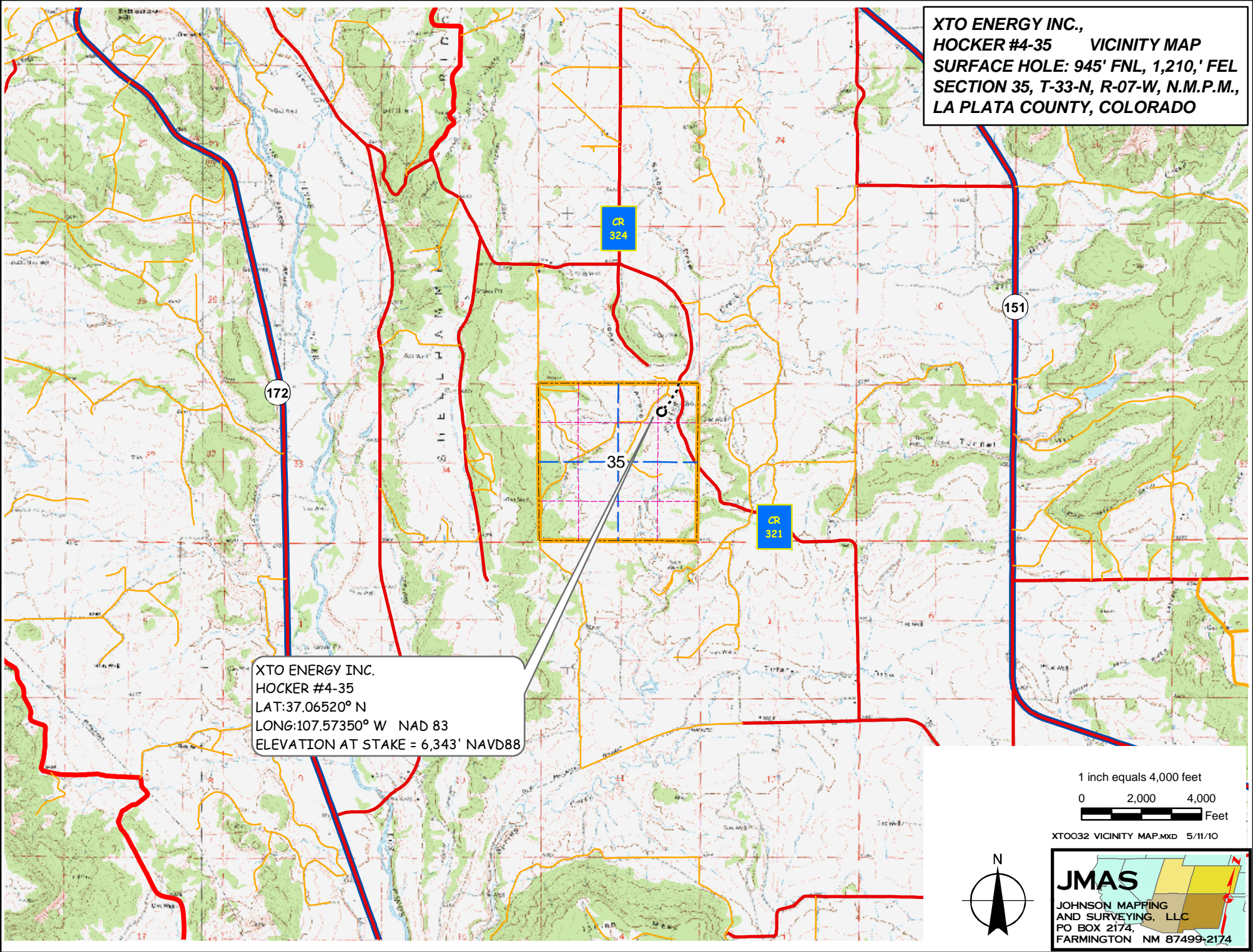
**XTO ENERGY INC.,  
HOCKER #4-35 VICINITY MAP  
SURFACE HOLE: 945' FNL, 1,210,' FEL  
SECTION 35, T-33-N, R-07-W, N.M.P.M.,  
LA PLATA COUNTY, COLORADO**

**XTO ENERGY INC.  
HOCKER #4-35  
LAT: 37.06520° N  
LONG: 107.57350° W NAD 83  
ELEVATION AT STAKE = 6,343' NAVD88**

1 inch equals 4,000 feet  
0 2,000 4,000 Feet

XTO032 VICINITY MAP.MXD 5/11/10

**JMAS**  
JOHNSON MAPPING  
AND SURVEYING, LLC  
PO BOX 2174,  
FARMINGTON NM 87499-2174



**XTO ENERGY INC.,  
HOCKER #4-35 VICINITY MAP  
SURFACE HOLE: 945' FNL, 1,210,' FEL  
SECTION 35, T-33-N, R-07-W, N.M.P.M.,  
LA PLATA COUNTY, COLORADO**

**XTO ENERGY INC.  
HOCKER #4-35  
LAT: 37.06520° N  
LONG: 107.57350° W NAD 83  
ELEVATION AT STAKE = 6,343' NAVD88**

1 inch equals 4,000 feet  
0 2,000 4,000 Feet

XTO032 VICINITY MAP.MXD 5/11/10

**JMAS**  
JOHNSON MAPPING  
AND SURVEYING, LLC  
PO BOX 2174,  
FARMINGTON NM 87499-2174