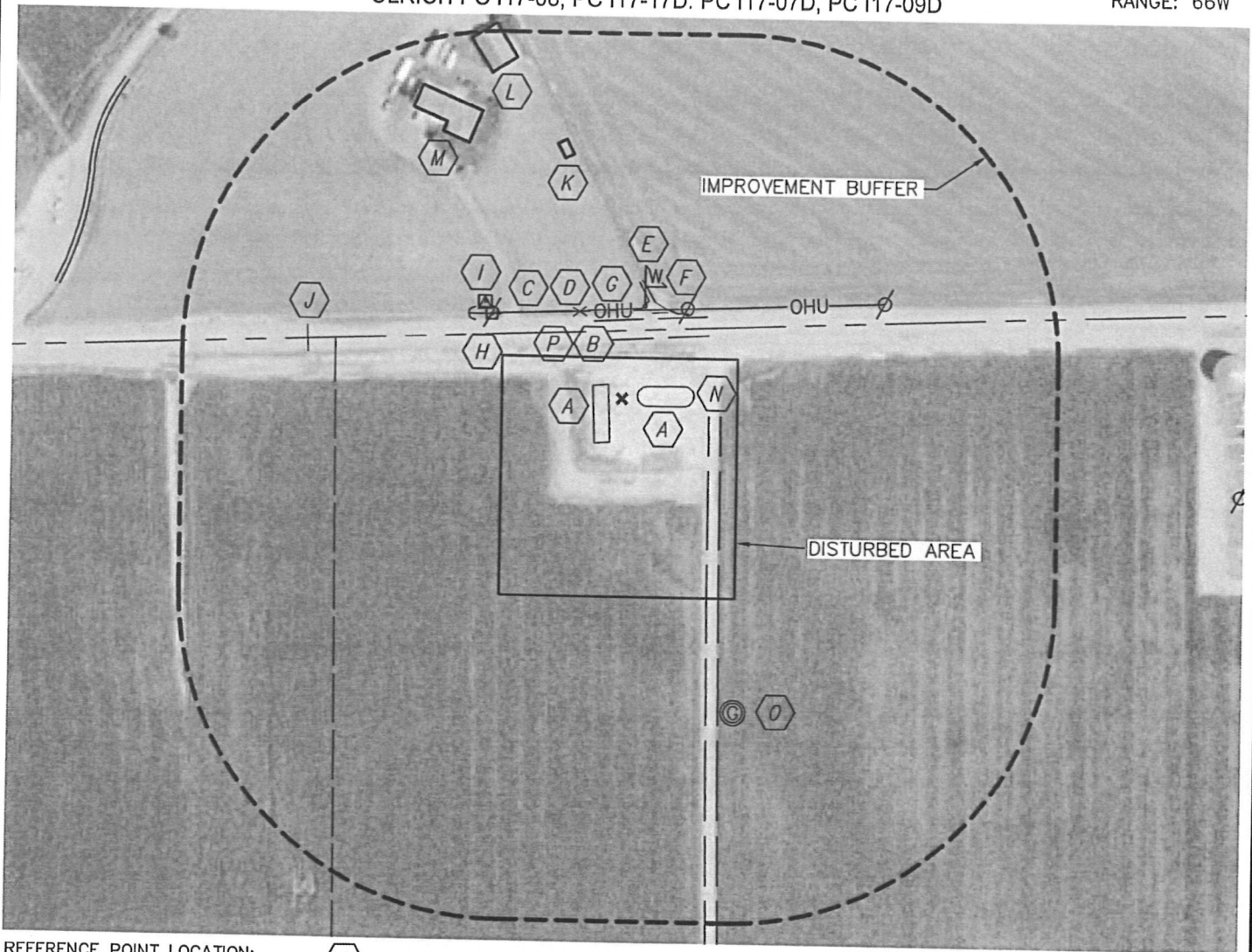


KING SURVEYORS, INC. 650 E. GARDEN DR. WINDSOR, CO 80550  
**PRODUCTION FACILITY LOCATION DRAWING**

ULRICH PC I17-08, PC I17-17D, PC I17-07D, PC I17-09D

SECTION: 17  
 TOWNSHIP: 6N  
 RANGE: 66W



**REFERENCE POINT LOCATION:**

LATITUDE: 40.49509°N  
 LONGITUDE: 104.79590°W  
 ELEV: 4803'  
 PDOP: 1.9  
 DATE: 2/16/2011  
 OPERATOR: RON EDWARDS  
 1/4,1/4: NE1/4NE1/4  
 FNL: 84'  
 FEL: 972'  
 DISTANCE TO WELL: 1856' SOUTH  
 ASSOCIATED NEW WELLS:  
 ULRICH PC I17-08  
 ULRICH PC I17-17D  
 ULRICH PC I17-07D  
 ULRICH PC I17-09D  
 ASSOCIATED EXISTING WELLS:  
 McGLOTHLIN 17-11  
 McGLOTHLIN 17-12  
 McGLOTHLIN 17-42

**LEGEND**

✕ REFERENCE POINT

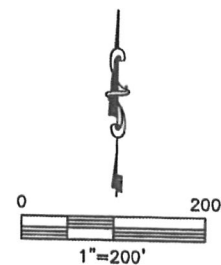
**NOTE**

ALL DISTANCES ARE APPROXIMATE

- A EXISTING PRODUCTION EQUIPMENT 20'E, 16'W
- B SOUTH EDGE GRAVEL ROAD (WCR70) 73' N
- C OVERHEAD UTILITY LINE 109' N
- D FENCE 111' N
- E WATER LINE MARKER 118' N
- F SOUTH EDGE DIRT IRRIGATION DITCH 122' NE
- G WATER BLOW-OFF 110' N
- H TELEPHONE PEDESTAL 193' NW
- I ELECTRIC METER 208' NW
- J CULVERT 396' NW
- K BARN 305' NW
- L BARN 433' NW
- M HOUSE 369' NW
- N WEST EDGE FIELD ROAD 109' E
- O EXISTING WELL HEAD-MCGLOTHLIN 17-11 411' SE
- P PROPERTY LINE 84' N

**NEAREST**

BUILDING=305' NW  
 PUBLIC ROAD=73' N  
 ABOVE GROUND UTILITY=109' N  
 RAILROAD=5280'+  
 PROPERTY LINE=84' N



PROJECT#: 2010462