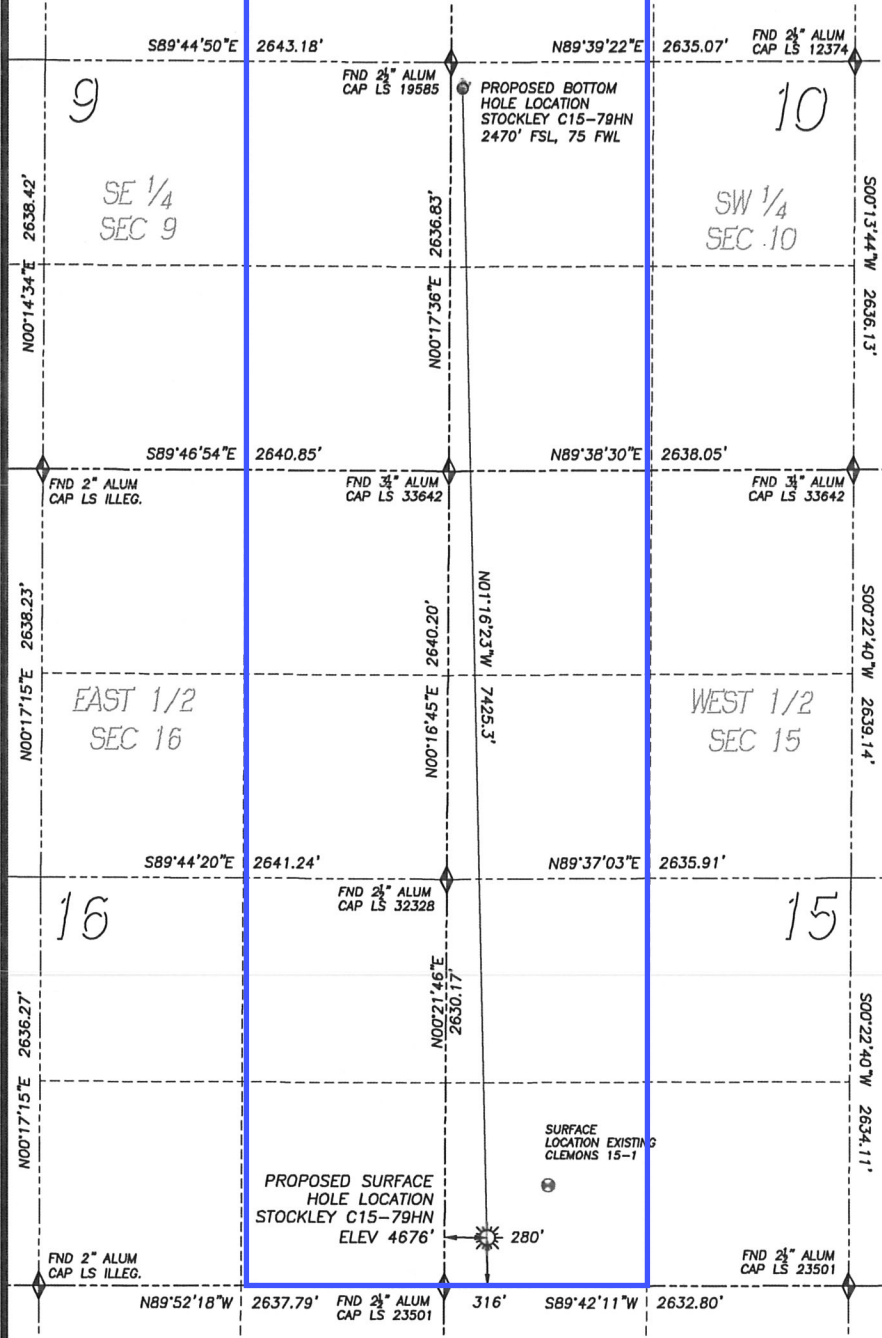


WELL LOCATION CERTIFICATE

STOCKLEY C15-79HN

SECTION 15, TOWNSHIP 4 NORTH, RANGE 64 WEST OF THE 6TH PRINCIPAL MERIDIAN



NAD 83 LATITUDE AND LONGITUDE

STOCKLEY C15-79HN SURFACE HOLE:
 LATITUDE: N40.30602°
 LONGITUDE: W104.54522°
 ELEVATION: 4676'
 FOOTAGE: 316' FSL, 280' FWL
 PDOP: 1.6
 QTR/QTR: SW4/SW4
 PROP LINE: 280± WEST

BOTTOM HOLE:
 LATITUDE: N40.32639°
 LONGITUDE: W104.54581°
 FOOTAGE: 2470' FSL, 75' FWL
 OF SECTION 10, T.4N., R.64W.

NEAREST EXISTING WELL:
 CLEMONS 15-1 SURFACE HOLE
 LATITUDE: N40.30695°
 LONGITUDE: W104.54382°
 ELEVATION: 4670'
 518' NORTHEAST

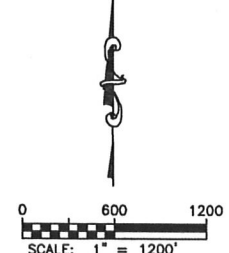
NOTES:

- 1) BEARINGS FOR THIS MAP ARE ASSUMED AND BASED UPON GPS OBSERVATIONS MADE BETWEEN MONUMENTS LOCATED AT THE SOUTHWEST CORNER OF SECTION 15, T.4N., R.64W.
- 2) HORIZONTAL DATUM IS NAD83.
- 3) VERTICAL DATUM IS NAVD88. ELEVATIONS ARE DERIVED FROM GPS OBSERVATIONS PROCESSED THROUGH OPUS, UTILIZING THE GEODIOD3 MODEL.
- 4) SEE LOCATION DRAWING FOR VISIBLE IMPROVEMENTS WITHIN 600' OF PROPOSED SURFACE HOLE LOCATION.
- 5) SURFACE USE: AGRICULTURAL



FOR AND ON BEHALF OF
 DALEY LAND SURVEYING INC.,
 Robert Daley, PLS 35597

NOTICE: According to Colorado law you MUST commence any legal action based upon any defect in this W.L.C. within three years after you first discover such defect. In no event may any action based upon any such defect in this W.L.C. be commenced more than ten years from the date of the certification shown hereon.



IN ACCORDANCE WITH A REQUEST FROM ERIK VAN DECAR OF NOBLE ENERGY INC., DALEY LAND SURVEYING, INC. HAS DETERMINED THE SURFACE LOCATION OF THE STOCKLEY C15-79HN WELL TO BE 316' FSL, 280' FWL, AS MEASURED AT NINETY (90) DEGREES FROM THE SECTION LINES OF SECTION 15, TOWNSHIP 4 NORTH, RANGE 64 WEST OF THE 6TH PRINCIPAL MERIDIAN, WELD COUNTY, COLORADO. THE BOTTOM HOLE LOCATION, PROVIDED BY THE CLIENT, IS TO BE 2470' FSL, 75' FWL OF SECTION 10, T.4N., R.64W.

I HEREBY CERTIFY THAT THIS WELL LOCATION CERTIFICATE WAS PREPARED BY ME OR UNDER MY DIRECT SUPERVISION, THAT THE WORK WAS COMPLETED ON 12/20/2010 FOR AND ON BEHALF OF NOBLE ENERGY, INC., AND THAT THIS MAP DOES NOT REPRESENT A BOUNDARY SURVEY, IT IS NOT A LAND SURVEY PLAT OR AN IMPROVEMENT SURVEY PLAT AND IT IS NOT TO BE RELIED UPON FOR THE ESTABLISHMENT OF FENCE, BUILDING OR OTHER FUTURE IMPROVEMENT LINES.

- LEGEND**
- ◆ FOUND MONUMENT AS DESCRIBED
 - ☀ PROPOSED WELL
 - EXISTING WELL
 - BOTTOM HOLE
 - ⊕ ABANDONED WELL