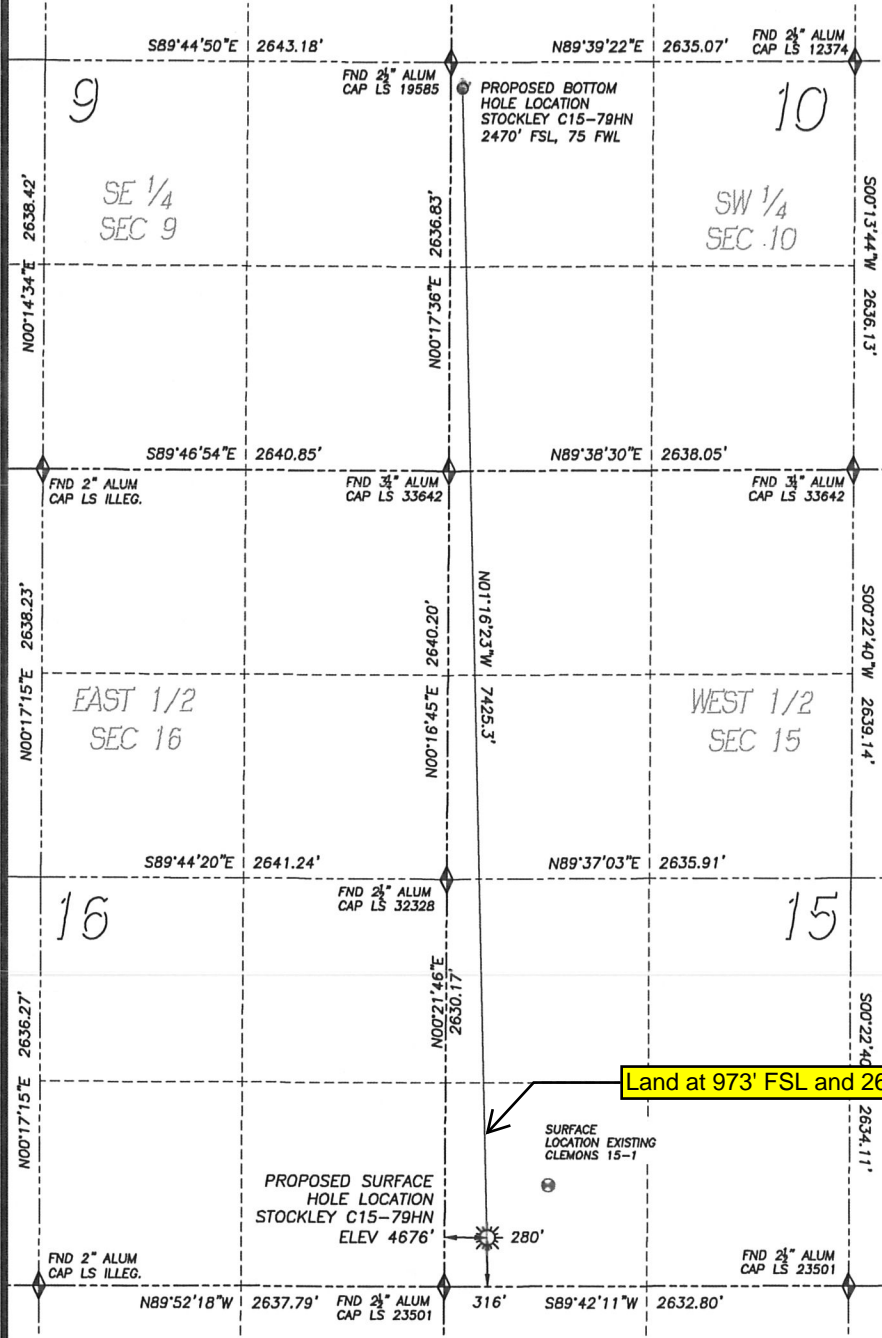


WELL LOCATION CERTIFICATE
STOCKLEY C15-79HN

SECTION 15, TOWNSHIP 4 NORTH, RANGE 64 WEST OF THE 6TH PRINCIPAL MERIDIAN



NAD 83 LATITUDE AND LONGITUDE

STOCKLEY C15-79HN SURFACE HOLE:

LATITUDE: N40.30602°
LONGITUDE: W104.54522°
ELEVATION: 4676'
FOOTAGE: 316' FSL, 280' FWL
PDOP: 1.6
QTR/QTR: SW4/SW4
PROP LINE: 280± WEST

BOTTOM HOLE:

LATITUDE: N40.32639°
LONGITUDE: W104.54581°
FOOTAGE: 2470' FSL, 75' FWL
OF SECTION 10, T.4N., R.64W.

NEAREST EXISTING WELL:

CLEMONS 15-1 SURFACE HOLE
LATITUDE: N40.30695°
LONGITUDE: W104.54382°
ELEVATION: 4670'
518' NORTHEAST

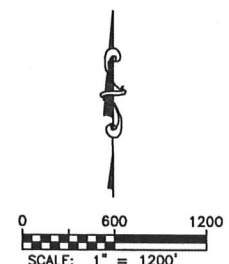
NOTES:

- 1) BEARINGS FOR THIS MAP ARE ASSUMED AND BASED UPON GPS OBSERVATIONS MADE BETWEEN MONUMENTS LOCATED AT THE SOUTHWEST CORNER AND SOUTH QUARTER CORNER OF SECTION 15, T.4N., R.64W.
- 2) HORIZONTAL DATUM IS NAD83.
- 3) VERTICAL DATUM IS NAVD88. ELEVATIONS ARE DERIVED FROM GPS OBSERVATIONS PROCESSED THROUGH OPUS, UTILIZING THE GEOD03 MODEL.
- 4) SEE LOCATION DRAWING FOR VISIBLE IMPROVEMENTS WITHIN 600' OF PROPOSED SURFACE HOLE LOCATION.
- 5) SURFACE USE: AGRICULTURAL



FOR AND/OR ON BEHALF OF
DALEY LAND SURVEYING INC.,
Robert Daley, PLS 35597

NOTICE: According to Colorado law you MUST commence any legal action based on a defect in this W.L.C. within three years after you first discover such defect or any action based upon any such defect in this W.L.C. must be commenced more than ten years from the date of the certification shown hereon.



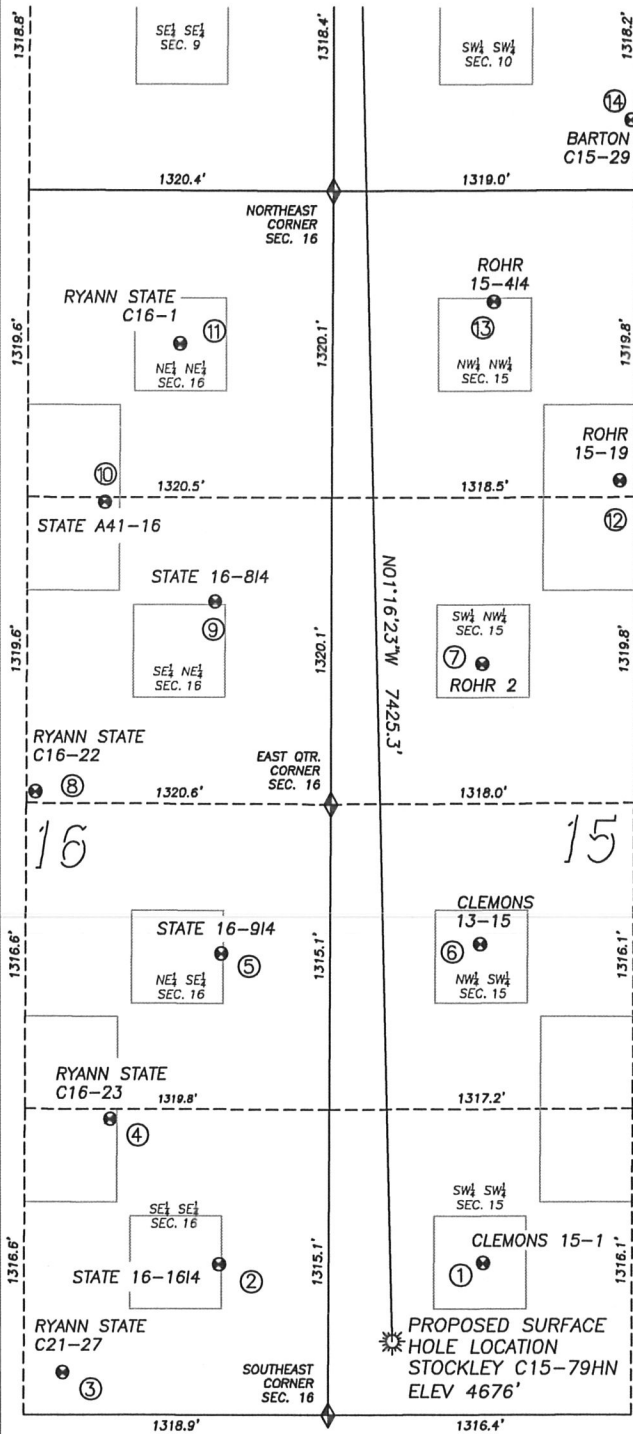
IN ACCORDANCE WITH A REQUEST FROM ERIK VAN DECAR OF NOBLE ENERGY INC., DALEY LAND SURVEYING, INC. HAS DETERMINED THE SURFACE LOCATION OF THE STOCKLEY C15-79HN WELL TO BE 316' FSL, 280' FWL, AS MEASURED AT NINETY (90) DEGREES FROM THE SECTION LINES OF SECTION 15, TOWNSHIP 4 NORTH, RANGE 64 WEST OF THE 6TH PRINCIPAL MERIDIAN, WELD COUNTY, COLORADO. THE BOTTOM HOLE LOCATION, PROVIDED BY THE CLIENT, IS TO BE 2470' FSL, 75' FWL OF SECTION 10, T.4N., R.64W.

I HEREBY CERTIFY THAT THIS WELL LOCATION CERTIFICATE WAS PREPARED BY ME OR UNDER MY DIRECT SUPERVISION, THAT THE WORK WAS COMPLETED ON 12/20/2010 FOR AND ON BEHALF OF NOBLE ENERGY, INC., AND THAT THIS MAP DOES NOT REPRESENT A BOUNDARY SURVEY, IT IS NOT A LAND SURVEY PLAT OR AN IMPROVEMENT SURVEY PLAT AND IT IS NOT TO BE RELIED UPON FOR THE ESTABLISHMENT OF FENCE, BUILDING OR OTHER FUTURE IMPROVEMENT LINES.

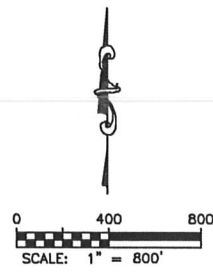
- LEGEND
- ◆ FOUND MONUMENT AS DESCRIBED
 - ☀ PROPOSED WELL
 - ⊙ EXISTING WELL
 - BOTTOM HOLE
 - ⊘ ABANDONED WELL

SITE SKETCH STOCKLEY C15-79HN

SECTION 15, TOWNSHIP 4 NORTH, RANGE 64 WEST OF THE 6TH PRINCIPAL MERIDIAN

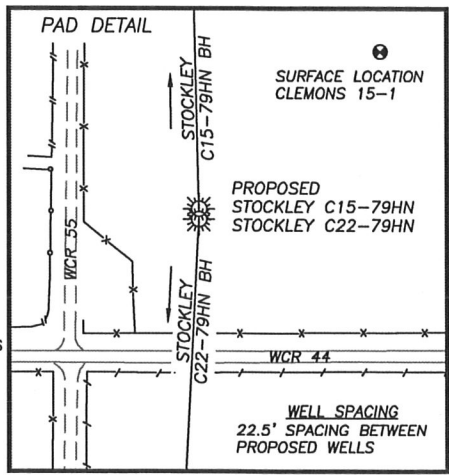


- ① CLEMONS 15-1
SW/SW SEC. 15
652' FSL, 670' FWL
LAT. N40.30695'
LONG. W104.54382'
EL: 4670'
PDOP 1.5
- ② STATE 16-1614
SE/SE SEC. 16
649' FSL, 474' FEL
LAT. N40.30693'
LONG. W104.54792'
EL: 4682'
PDOP 1.7
- ③ RYANN STATE C21-27
SE/SE SEC. 16
182' FSL, 1151' FEL
LAT. N40.30566'
LONG. W104.55036'
EL: 4682'
PDOP 1.6
- ④ RYANN STATE C16-23
SE/SE SEC. 16
1274' FSL, 952' FEL
LAT. N40.30865'
LONG. W104.54962'
EL: 4678'
PDOP 1.2
- ⑤ STATE 16-914
NE/SE SEC. 16
1986' FSL, 471' FEL
LAT. N40.31060'
LONG. W104.54788'
EL: 4676'
PDOP 1.6
- ⑥ CLEMONS 13-15
NW/SW SEC. 15
2026' FSL, 652' FWL
LAT. N40.31072'
LONG. W104.54385'
EL: 4663'
PDOP 2.6
- ⑦ ROHR 2
SW/NW SEC. 15
2038' FNL, 654' FWL
LAT. N40.31403'
LONG. W104.54382'
EL: 4647'
PDOP 1.8
- ⑧ RYANN STATE C16-22
SE/NE SEC. 16
2590' FNL, 1282' FEL
LAT. N40.31252'
LONG. W104.55077'
EL: 4670'
PDOP 2.0
- ⑨ STATE 16-B14
SE/NE SEC. 16
1767' FNL, 504' FEL
LAT. N40.31477'
LONG. W104.54796'
EL: 4655'
PDOP 2.0
- ⑩ STATE A41-16
SE/NE SEC. 16
1340' FNL, 988' FEL
LAT. N40.31595'
LONG. W104.54851'
EL: 4655'
PDOP 2.3
- ⑪ RYANN STATE C16-1
NE/NE SEC. 16
659' FNL, 662' FEL
LAT. N40.31781'
LONG. W104.54851'
EL: 4655'
PDOP 1.7
- ⑫ ROHR C15-19
NW/NW SEC. 15
1250' FNL, 1248' FWL
LAT. N40.31620'
LONG. W104.54167'
EL: 4644'
PDOP 1.3
- ⑬ ROHR 15-414
NW/NW SEC. 15
478' FNL, 699' FWL
LAT. N40.31831'
LONG. W104.54363'
EL: 4645'
PDOP 2.2
- ⑭ BARTON C15-29
SW/SW SEC. 10
301' FSL, 1291' FWL
LAT. N40.32046'
LONG. W104.54149'
EL: 4642'
PDOP 1.6



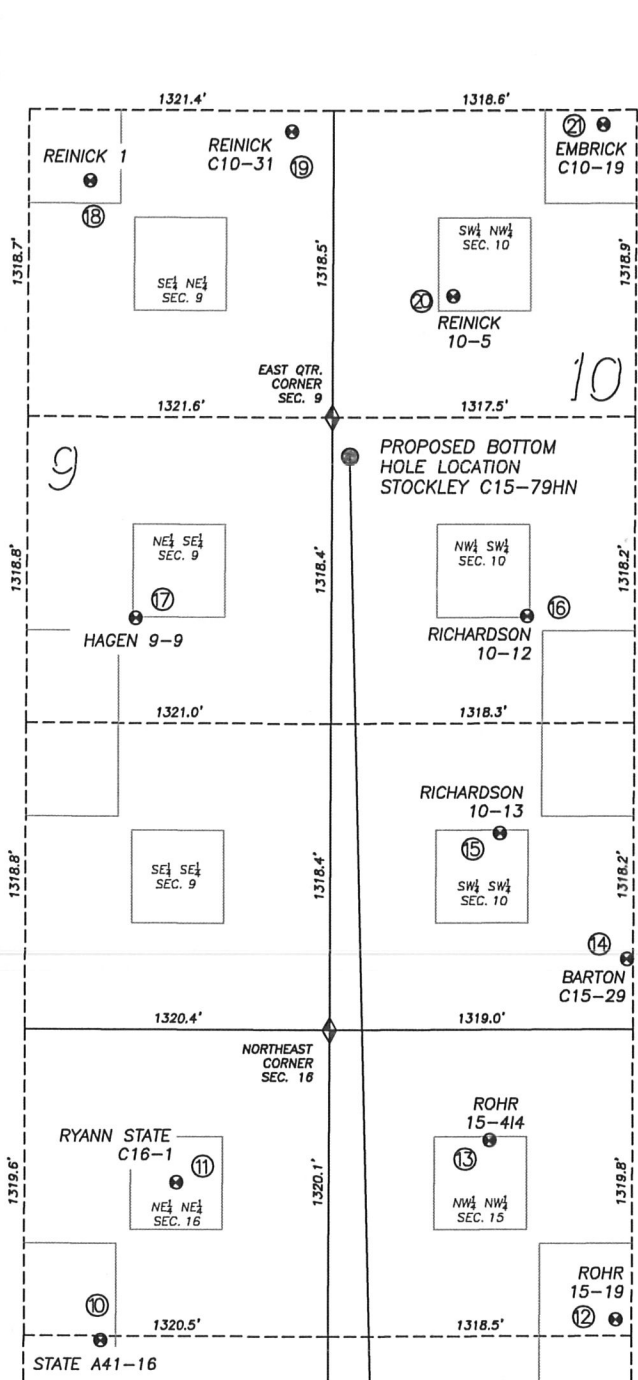
- LEGEND**
- ◆ FOUND MONUMENT AS DESCRIBED
 - ☀ PROPOSED WELL
 - ⊙ EXISTING WELL
 - BOTTOM HOLE
 - ⊘ ABANDONED WELL

- NOTES:**
- 1) THIS DOES NOT REPRESENT A BOUNDARY SURVEY
 - 2) THE LATITUDES AND LONGITUDES SHOWN ARE REFERENCED TO NAD83
 - 3) DATUM FOR ELEVATION IS NAVD88. ELEVATIONS ARE DERIVED FROM GPS-RTK OBSERVATIONS PROCESSED THROUGH OPUS, UTILIZING THE GEOID03 MODEL.

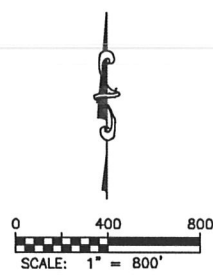


SITE SKETCH STOCKLEY C15-79HN

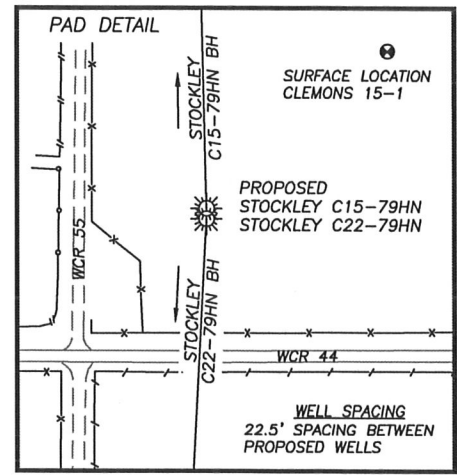
SECTION 15, TOWNSHIP 4 NORTH, RANGE 64 WEST OF THE 6TH PRINCIPAL MERIDIAN



- ⑩ STATE A41-16
SE/NE SEC. 16
1340' FNL, 988' FEL
LAT. N40.31595'
LONG. W104.54969'
EL: 4656'
PDOP 2.3
- ⑪ RYANN STATE C16-1
NE/NE SEC. 16
659' FNL, 662' FEL
LAT. N40.31781'
LONG. W104.54851'
EL: 4655'
PDOP 1.7
- ⑫ ROHR C15-19
NW/NW SEC. 15
1250' FNL, 1248' FWL
LAT. N40.31620'
LONG. W104.54167'
EL: 4644'
PDOP 1.3
- ⑬ ROHR 15-414
NW/NW SEC. 15
478' FNL, 699' FWL
LAT. N40.31831'
LONG. W104.54363'
EL: 4645'
PDOP 2.2
- ⑭ BARTON C15-29
SW/SW SEC. 10
301' FSL, 1291' FWL
LAT. N40.32046'
LONG. W104.54149'
EL: 4642'
PDOP 1.6
- ⑮ RICHARDSON 10-13
SW/SW SEC. 10
845' FSL, 738' FWL
LAT. N40.32194'
LONG. W104.54346'
EL: 4648'
PDOP 1.5
- ⑯ RICHARDSON 10-12
NW/SW SEC. 10
1779' FSL, 850' FWL
LAT. N40.32451'
LONG. W104.54304'
EL: 4661'
PDOP 2.6
- ⑰ HAGEN 9-9
NE/SE SEC. 9
1772' FSL, 849' FEL
LAT. N40.32448'
LONG. W104.54913'
EL: 4674'
PDOP 1.8
- ⑱ REINICK 1
SE/NE SEC. 9
1625' FNL, 1056' FEL
LAT. N40.32964'
LONG. W104.54984'
EL: 4690'
PDOP 2.5
- ⑲ REINICK C10-31
SE/NE SEC. 9
1408' FNL, 181' FEL
LAT. N40.33022'
LONG. W104.54670'
EL: 4684'
PDOP 1.9
- ⑳ REINICK 10-5
SW/NW SEC. 10
2118' FNL, 524' FWL
LAT. N40.32828'
LONG. W104.54419'
EL: 4673'
PDOP 2.2
- ㉑ EMBRICK C10-19
SW/NW SEC. 10
1380' FNL, 1172' FWL
LAT. N40.33032'
LONG. W104.54185'
EL: 4676'
PDOP 2.0



- LEGEND**
- ◆ FOUND MONUMENT AS DESCRIBED
 - ☀ PROPOSED WELL
 - ⊙ EXISTING WELL
 - BOTTOM HOLE
 - ⊘ ABANDONED WELL



NOTES:
 1) THIS DOES NOT REPRESENT A BOUNDARY SURVEY
 2) THE LATITUDES AND LONGITUDES SHOWN ARE REFERENCED TO NAD83
 3) DATUM FOR ELEVATION IS NAVD88. ELEVATIONS ARE DERIVED FROM GPS-RTK OBSERVATIONS PROCESSED THROUGH OPUS, UTILIZING THE GEOID03 MODEL.