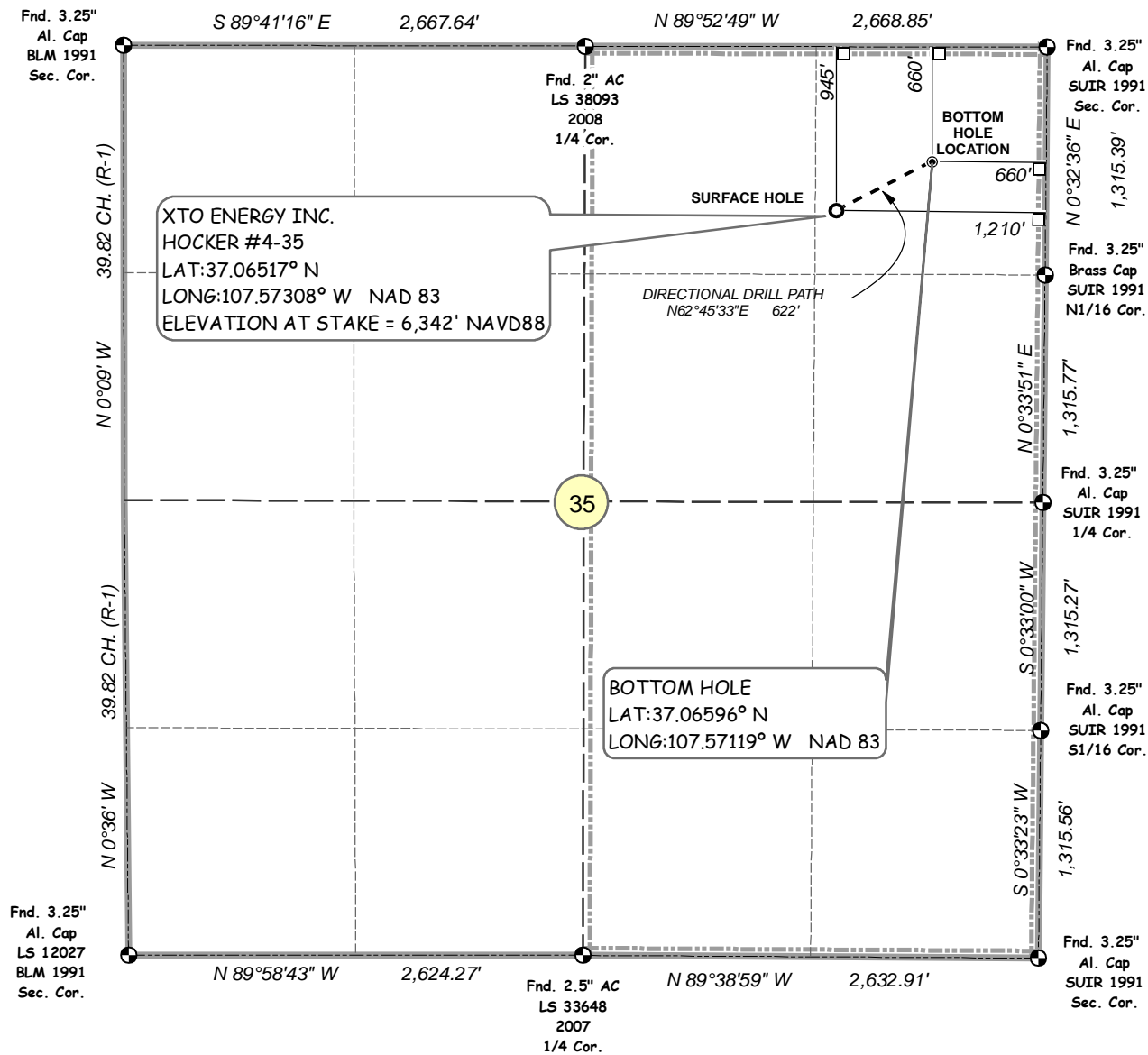


**XTO ENERGY INC.  
HOCKER #4-35**

**SURFACE HOLE: 945' FNL, 1,210' FEL  
BOTTOM HOLE LOCATION: 660' FNL, 660' FEL,  
SECTION 35, T-33-N, R-07-W, N.M.P.M.,  
LA PLATA COUNTY, COLORADO  
LAT:37.06517° N LONG:107.57308° W NAD 83  
ELEVATION AT STAKE = 6,342' NAVD88**

**Legend**

- FMON
- BOTTOM HOLE
- SURFACE LOCATION
- DIRECTIONAL\_ALIGNMENT
- 90° TIE
- QUARTER
- SECTION
- SIXTEENTH
- ▤ LEASE\_AREA

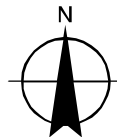
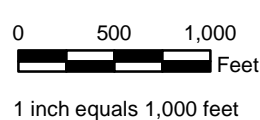


**NOTES:**

1. SURFACE USE IS EXISTING WELL LOCATION AND AGRICULTURAL.
2. SEE ATTACHED ADDENDUM FOR IMPROVEMENTS, AND PROPERTY LINES WITHIN 400' OF PROPOSED WELL.
3. DATE OF SURVEY 4/13/10
4. BASIS OF ELEVATION = NAVD88 AS PREDICTED BY GEOID03.
5. PDOP OF GPS OBSERVATION OF WELL STAKE = 1.3
6. FOOTAGE DIMENSION FIELD MEASURED AT 90° FROM SECTION LINES
7. (R-1) INDICATES DIMENSION FROM RECORD MEASUREMENT BLM PLAT AUG. 16, 1995. ALL OTHER DIMENSIONS FIELD MEASURED.

**THIS IS TO CERTIFY THAT THE ABOVE PLAT WAS PREPARED FROM FIELD NOTES OF ACTUAL SURVEYS MADE BY ME OR UNDER MY DIRECT SUPERVISION AND THAT SAME ARE TRUE AND CORRECT TO THE BEST OF MY KNOWLEDGE AND BELIEF.**

**DAVID ALEXANDER JOHNSON LICENSE NO. 33648 DATE STATE OF COLORADO**



AJ 5-10-10 XTO032 SD.MXD

