

T12N, R97W, 6th P.M.

WEXPRO COMPANY

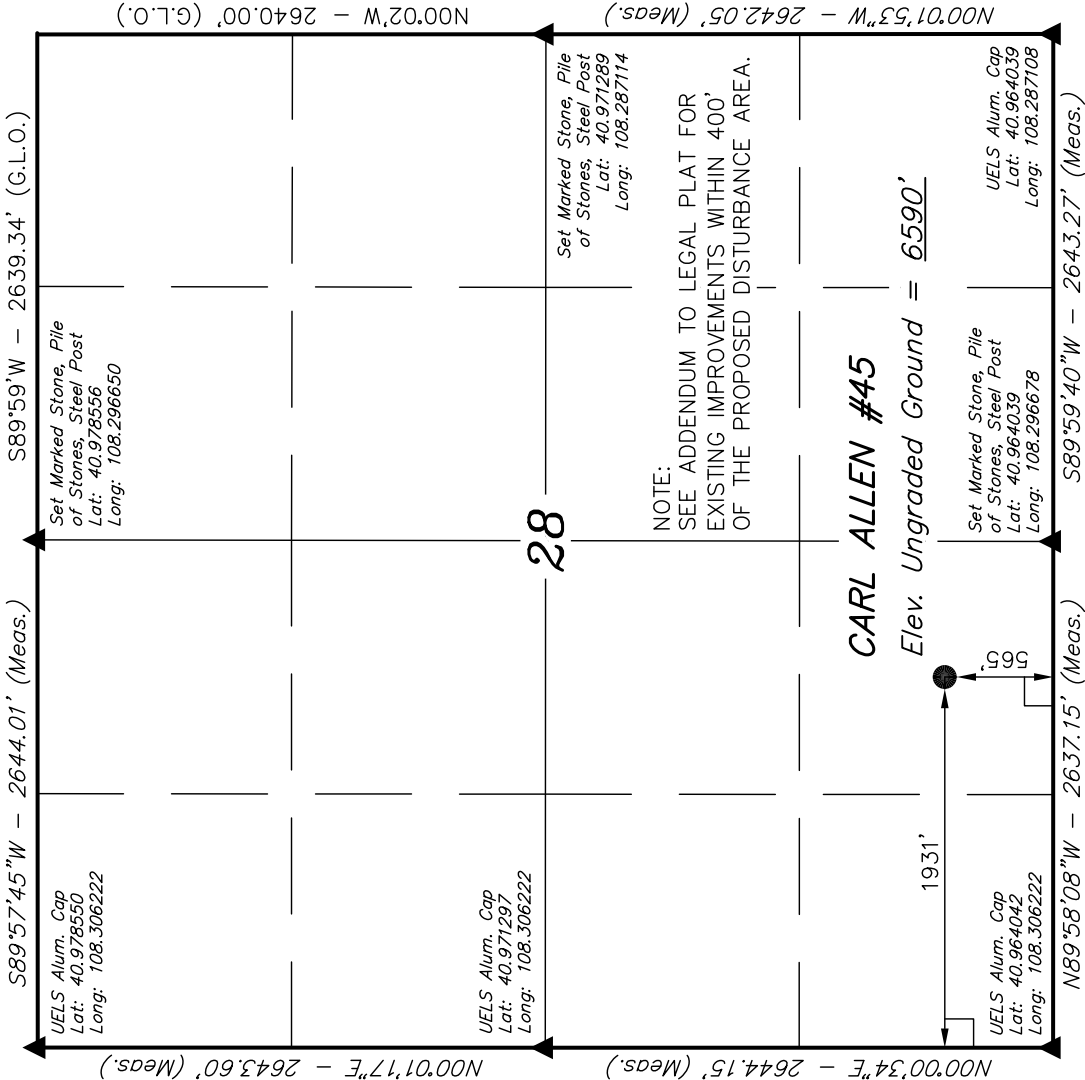
Well location, CARL ALLEN #45, located as shown in the SE 1/4 SW 1/4 of Section 28, T12N, R97W, 6th P.M., Moffat County, Colorado.

BASIS OF ELEVATION

SPOT ELEVATION LOCATED AT THE SOUTHEAST CORNER OF SECTION 4, T11N, R97W, 6th P.M. TAKEN FROM THE POWDER WASH QUADRANGLE, COLORADO, MOFFAT COUNTY, 7.5 MINUTE SERIES (TOPOGRAPHICAL MAP) PUBLISHED BY THE UNITED STATES DEPARTMENT OF THE INTERIOR, GEOLOGICAL SURVEY. SAID ELEVATION IS MARKED AS BEING 6644 FEET.

BASIS OF BEARINGS

BASIS OF BEARINGS IS A G.P.S. OBSERVATION.



LEGEND:

- = 90° SYMBOL
- = PROPOSED WELL HEAD.
- ▲ = SECTION CORNERS LOCATED.

(NAD 83)
LATITUDE = 40°57'56.12" (40.965589)
LONGITUDE = 108°17'57.24" (108.299233)
(NAD 27)
LATITUDE = 40°57'56.25" (40.965625)
LONGITUDE = 108°17'54.90" (108.298583)

REVISED: 01-05-11 S.L.

UTAH ENGINEERING & LAND SURVEYING

85 SOUTH 200 EAST - VERNAL, UTAH 84078

(435) 789-1017

SCALE 1" = 1000'	DATE SURVEYED: 07-27-10	DATE DRAWN: 09-03-10
PARTY D.K. J.D. C.C.	REFERENCES G.L.O. PLAT	
WEATHER HOT	FILE	WEXPRO COMPANY