

T4S, R96W, 6th P.M.

Encana Oil & Gas (USA) INC.

Well location, SG #8508E-21 N22 496 (TARGET BOTTOM HOLE), located as shown in the SE 1/4 NE 1/4 of Section 21, T4S, R96W, 6th P.M., Garfield County, Colorado.

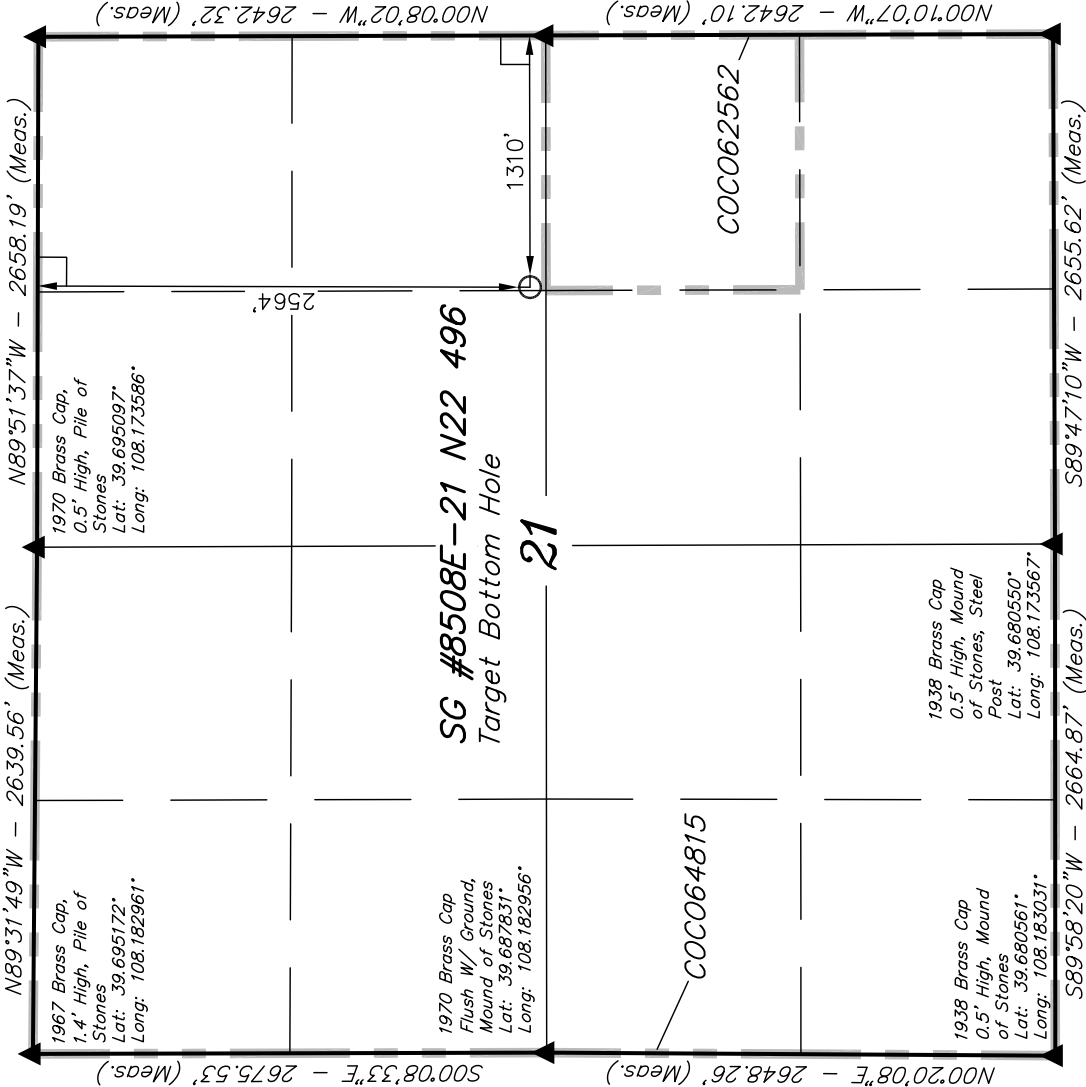
BASIS OF ELEVATION

BENCH MARK (H79) LOCATED IN THE NE 1/4 OF SECTION 35, T4S, R98W, 6th P.M. TAKEN FROM THE BULL FORK QUADRANGLE, COLORADO, 7.5 MINUTE SERIES (TOPOGRAPHICAL MAP) PUBLISHED BY THE UNITED STATES DEPARTMENT OF THE INTERIOR, GEOLOGICAL SURVEY. SAID ELEVATION IS MARKED AS BEING 8535 FEET.

BASIS OF BEARINGS

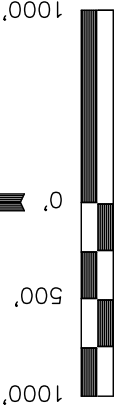
BASIS OF BEARINGS IS A G.P.S. OBSERVATION.

FIGURE #1x



1975 Brass Cap
0.5' High, Mound
of Stones, Steel
Post
Lat: 39.687814°
Long: 108.164142°

1953 Brass Cap
0.7' High, Mound
of Stones, Steel
Post
Lat: 39.680564°
Long: 108.164133°



SCALE

CERTIFICATE

THIS IS TO CERTIFY THAT THE ABOVE PLAT WAS PREPARED FROM FIELD NOTES OF ACTUAL SURVEYS MADE BY ME OR UNDER MY SUPERVISION AND THAT THE SAME ARE TRUE AND CORRECT TO THE BEST OF MY KNOWLEDGE AND BELIEF.

REGISTERED LAND SURVEYOR
REGISTRATION NO. 17492
STATE OF COLORADO

REVISED: 12-14-10

UINTAH ENGINEERING & LAND SURVEYING
85 SOUTH 200 EAST - VERNAL, UTAH 84078
(435) 789-1017

LEGEND:

— = 90° SYMBOL

● = PROPOSED WELL HEAD.

▲ = SECTION CORNERS LOCATED.

NOTE:
THE PROPOSED BOTTOM HOLE FOR THIS WELL
BEARS N66°07'46"W 3598.84' FROM THE
PROPOSED WELL HEAD.

NAD 83 (TARGET BOTTOM HOLE)	
LATITUDE =	39°41'16.96" (39.688044)
LONGITUDE =	108°10'07.66" (108.168794)
NAD 27 (TARGET BOTTOM HOLE)	
LATITUDE =	39°41'17.05" (39.688069)
LONGITUDE =	108°10'05.37" (108.168158)

SCALE	DATE SURVEYED:	DATE DRAWN:
1" = 1000'	08-03-10	11-23-10
PARTY	REFERENCES	
B.H. B.J. C.H.	G.L.O. PLAT	
WEATHER	FILE	
COOL	Encana Oil & Gas (USA) INC.	