

T4S, R96W, 6th P.M.

Encana Oil & Gas (USA) INC.

Well location, SG #8508B-21 N22 496 (SURFACE LOCATION), located as shown in the SE 1/4 SW 1/4 of Section 22, T4S, R96W, 6th P.M., Garfield County, Colorado.

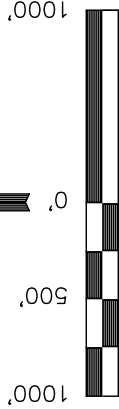
BASIS OF ELEVATION

BENCH MARK (H79) LOCATED IN THE NE 1/4 OF SECTION 35, T4S, R98W, 6th P.M. TAKEN FROM THE BULL FORK QUADRANGLE, COLORADO, 7.5 MINUTE SERIES (TOPOGRAPHICAL MAP) PUBLISHED BY THE UNITED STATES DEPARTMENT OF THE INTERIOR, GEOLOGICAL SURVEY. SAID ELEVATION IS MARKED AS BEING 8535 FEET.

BASIS OF BEARINGS

BASIS OF BEARINGS IS A G.P.S. OBSERVATION.

FIGURE #1i



CERTIFICATE

THIS IS TO CERTIFY THAT THE ABOVE PLAT WAS PREPARED FROM FIELD NOTES OF ACTUAL SURVEYS MADE BY ME OR UNDER MY SUPERVISION AND THAT THE SAME ARE TRUE AND CORRECT TO THE BEST OF MY KNOWLEDGE AND BELIEF.

1953 Brass Cap
0.8' High, Steel
Post
Lat: 39.680583°
Long: 108.145383°

REVISED: 12-14-10

UINTAH ENGINEERING & LAND SURVEYING
85 SOUTH 200 EAST - VERNAL, UTAH 84078
(435) 789-1017

LEGEND:

— = 90° SYMBOL

● = PROPOSED WELL HEAD.

▲ = SECTION CORNERS LOCATED.

NOTE:
THE PROPOSED BOTTOM HOLE FOR THIS WELL IS LOCATED IN THE SE 1/4 NE 1/4 OF SECTION 21, T4S, R96W, 6th P.M. AT A DISTANCE OF 1766' FNL 1314' FEL IT BEARS N56°18'56"W 3984.23' FROM THE PROPOSED WELL HEAD.

PDOP = 2.9

NAD 83 (SURFACE LOCATION)
LATITUDE = 39°41'02.94" (39.684150)
LONGITUDE = 108°09'25.38" (108.157050)

NAD 27 (SURFACE LOCATION)
LATITUDE = 39°41'03.03" (39.684175)
LONGITUDE = 108°09'23.09" (108.156414)

SCALE 1" = 1000'

DATE SURVEYED: 08-03-10

DATE DRAWN: 11-23-10

REFERENCES
B.H. B.J. C.H. G.L.O. PLAT

FILE
COOL

Encana Oil & Gas (USA) INC.

T4S, R96W, 6th P.M.

Encana Oil & Gas (USA) INC.

Well location, SG #8508B-21 N22 496 (TARGET BOTTOM HOLE), located as shown in the SE 1/4 NE 1/4 of Section 21, T4S, R96W, 6th P.M., Garfield County, Colorado.

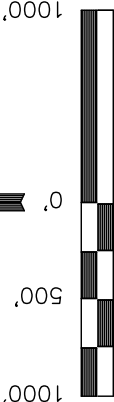
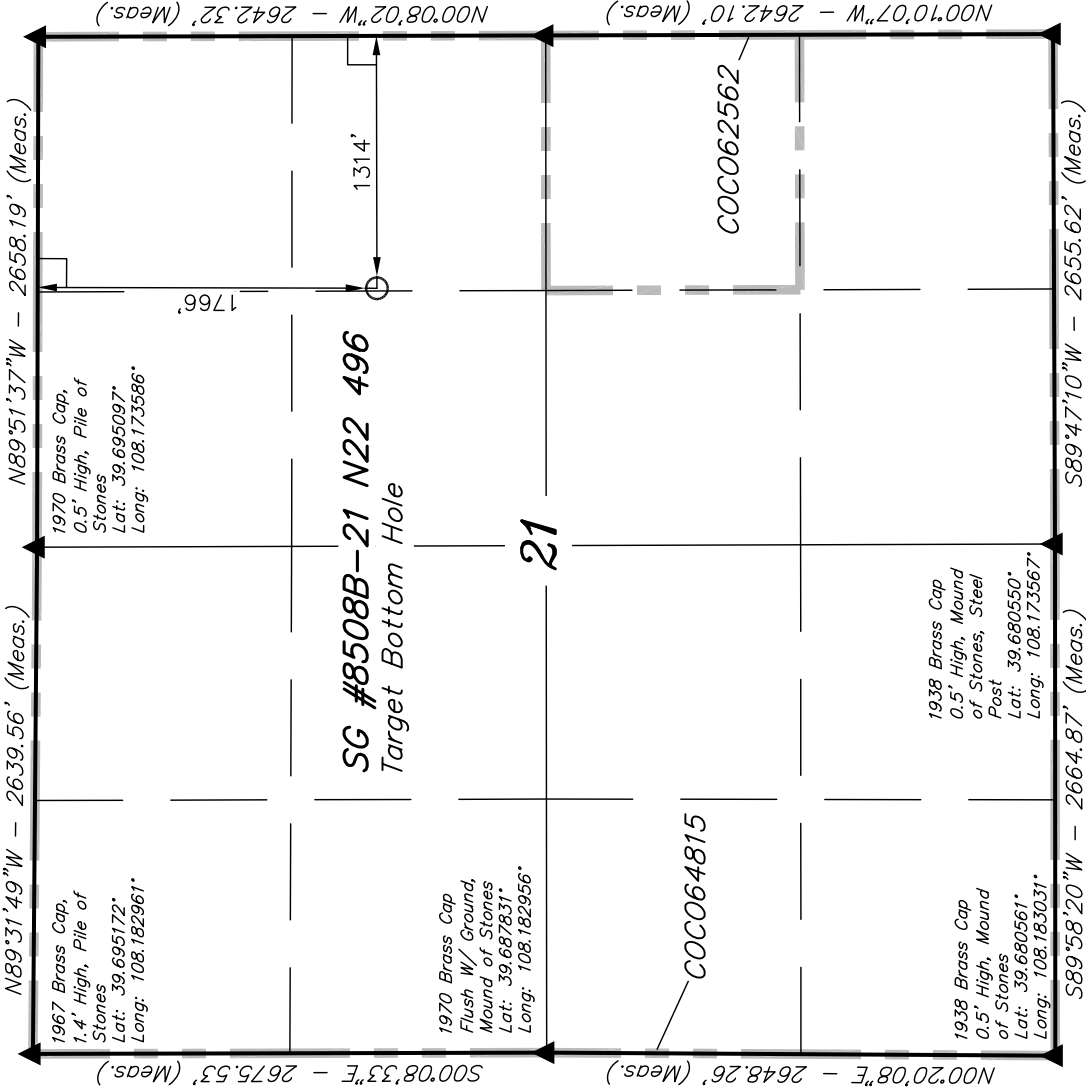
BASIS OF ELEVATION

BENCH MARK (H79) LOCATED IN THE NE 1/4 OF SECTION 35, T4S, R98W, 6th P.M. TAKEN FROM THE BULL FORK QUADRANGLE, COLORADO, 7.5 MINUTE SERIES (TOPOGRAPHICAL MAP) PUBLISHED BY THE UNITED STATES DEPARTMENT OF THE INTERIOR, GEOLOGICAL SURVEY. SAID ELEVATION IS MARKED AS BEING 8535 FEET.

BASIS OF BEARINGS

BASIS OF BEARINGS IS A G.P.S. OBSERVATION.

FIGURE #1j



CERTIFICATE

THIS IS TO CERTIFY THAT THE ABOVE PLAT WAS PREPARED FROM FIELD NOTES OF ACTUAL SURVEYS MADE BY ME OR UNDER MY SUPERVISION AND THAT THE SAME ARE TRUE AND CORRECT TO THE BEST OF MY KNOWLEDGE AND BELIEF.

1953 Brass Cap
0.7' High, Mound
of Stones, Steel
Post
Lat: 39.680564°
Long: 108.164133°

1975 Brass Cap
0.5' High, Mound
of Stones, Steel
Post
Lat: 39.687814°
Long: 108.164142°

REVISED: 12-14-10

UINTAH ENGINEERING & LAND SURVEYING
85 SOUTH 200 EAST - VERNAL, UTAH 84078
(435) 789-1017

SCALE 1" = 1000'	DATE SURVEYED: 08-03-10	DATE DRAWN: 11-23-10
PARTY B.H. B.J. C.H.	REFERENCES G.L.O. PLAT	
WEATHER COOL	FILE	
Encana Oil & Gas (USA) INC.		

LEGEND:

- = 90° SYMBOL
- = PROPOSED WELL HEAD.
- ▲ = SECTION CORNERS LOCATED.

NOTE:
THE PROPOSED BOTTOM HOLE FOR THIS WELL BEARS N56°18'56"W 3984.23' FROM THE PROPOSED WELL HEAD.

NAD 83 (TARGET BOTTOM HOLE)
LATITUDE = 39°41'24.84" (39.690233)
LONGITUDE = 108°10'07.71" (108.168808)
NAD 27 (TARGET BOTTOM HOLE)
LATITUDE = 39°41'24.93" (39.690258)
LONGITUDE = 108°10'05.42" (108.168172)