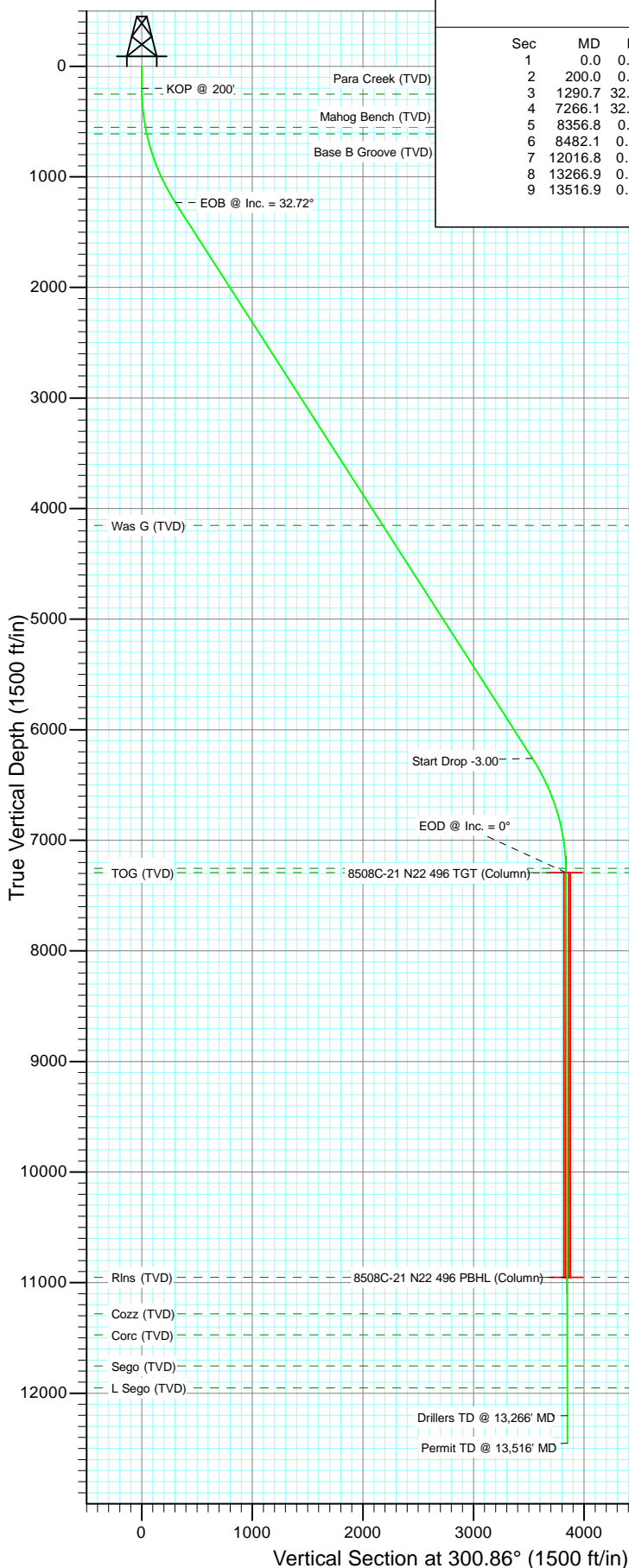
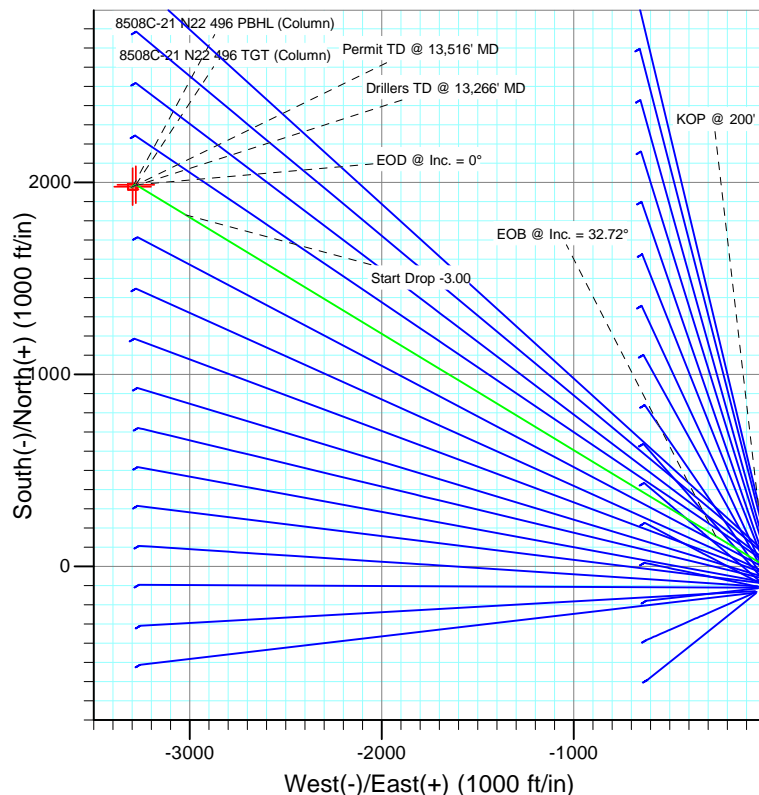




Project: Story Gulch  
Site: S22-T4S-R96W (N22 496) (Column Pattern)  
Well: 8508C-21 N22 496  
Wellbore: DD  
Design: Plan #1



SECTION DETAILS										
Sec	MD	Inc	Azi	TVD	+N/-S	+E/-W	Dleg	TFace	VSec	Target
1	0.0	0.00	0.00	0.0	0.0	0.0	0.00	0.00	0.0	
2	200.0	0.00	0.00	200.0	0.0	0.0	0.00	0.00	0.0	
3	1290.7	32.72	301.23	1232.3	157.1	-259.1	3.00	301.23	303.0	
4	7266.1	32.72	301.23	6259.7	1831.5	-3021.2	0.00	0.00	3532.9	
5	8356.8	0.00	0.00	7292.0	1988.6	-3280.3	3.00	180.00	3835.9	8508C-21 N22 496 TGT (Column)
6	8482.1	0.31	239.60	7417.3	1988.4	-3280.6	0.25	239.60	3836.1	
7	12016.8	0.31	239.60	10952.0	1978.7	-3297.3	0.00	0.00	3845.4	8508C-21 N22 496 PBHL (Column)
8	13266.9	0.31	239.60	12202.0	1975.2	-3303.2	0.00	0.00	3848.7	
9	13516.9	0.31	239.60	12452.0	1974.5	-3304.3	0.00	0.00	3849.3	



FORMATION TOP DETAILS		
TVDPath	MDPath	Formation
252.0	252.0	Para Creek (TVD)
552.0	554.0	Mahog Bench (TVD)
612.0	615.3	Base B Groove (TVD)
4152.0	4761.0	Was G (TVD)
7252.0	8316.8	WF (TVD)
7292.0	8356.8	TOG (TVD)
10952.0	12016.8	Rlins (TVD)
11282.0	12346.9	Cozz (TVD)
11472.0	12536.9	Corc (TVD)
11752.0	12816.9	Sego (TVD)
11952.0	13016.9	L Sego (TVD)



Azimuths to True North  
Magnetic North: 10.52°

Magnetic Field  
Strength: 52372.2snT  
Dip Angle: 65.88°  
Date: 12/2/2010  
Model: IGRF2010

Plan #1 8508C-21 N22 496 WELL @ 7602.0ft (Original Well Elev)						
North American Datum 1983 Well 8508C-21 N22 496, True North						
Type	Target	Azimuth	Origin	Type	N/S	E/W
TD	No Target (Freehand)	300.86	Slot		0.0	0.0
				From TVD		0.0
Name	TVD	+N/-S	+E/-W	Latitude	Longitude	
8508C-21 N22 496 TGT (Column)	7292.0	1988.6	-3280.3	39° 41' 22.41 N	108° 10' 7.45 W	
8508C-21 N22 496 PBHL (Column)	10952.0	1978.7	-3297.3	39° 41' 22.31 N	108° 10' 7.66 W	

# Cathedral Energy

## Planning Report

<b>Database:</b>	EDM 5000.1 US Multi Users DB	<b>Local Co-ordinate Reference:</b>	Well 8508C-21 N22 496
<b>Company:</b>	EnCana Oil & Gas (USA) Inc	<b>TVD Reference:</b>	WELL @ 7602.0ft (Original Well Elev)
<b>Project:</b>	Story Gulch	<b>MD Reference:</b>	WELL @ 7602.0ft (Original Well Elev)
<b>Site:</b>	S22-T4S-R96W (N22 496) (Column Pattern)	<b>North Reference:</b>	True
<b>Well:</b>	8508C-21 N22 496	<b>Survey Calculation Method:</b>	Minimum Curvature
<b>Wellbore:</b>	DD		
<b>Design:</b>	Plan #1		

<b>Project</b>	Story Gulch		
<b>Map System:</b>	US State Plane 1983	<b>System Datum:</b>	Mean Sea Level
<b>Geo Datum:</b>	North American Datum 1983		
<b>Map Zone:</b>	Colorado Central Zone		

Site		S22-T4S-R96W (N22 496) (Column Pattern)			
Site Position:		Northing:	1,685,048.56 ft	Latitude:	39° 41' 3.24 N
From:	Lat/Long	Easting:	2,252,316.79 ft	Longitude:	108° 9' 25.11 W
Position Uncertainty:	0.0 ft	Slot Radius:	13.200 in	Grid Convergence:	-1.68 °

Well	8508C-21 N22 496					
Well Position	+N/-S	0.0 ft	Northing:	1,685,000.94 ft	Latitude:	39° 41' 2.76 N
	+E/-W	0.0 ft	Easting:	2,252,286.10 ft	Longitude:	108° 9' 25.48 W
Position Uncertainty		0.0 ft	Wellhead Elevation:	ft	Ground Level:	7,569.0 ft

<b>Wellbore</b>	DD				
<b>Magnetics</b>	<b>Model Name</b>	<b>Sample Date</b>	<b>Declination (°)</b>	<b>Dip Angle (°)</b>	<b>Field Strength (nT)</b>
	IGRF2010	12/2/2010	10.52	65.88	52,372

<b>Design</b>	Plan #1				
<b>Audit Notes:</b>					
<b>Version:</b>	<b>Phase:</b>	PLAN		<b>Tie On Depth:</b>	0.0
<b>Vertical Section:</b>	<b>Depth From (TVD) (ft)</b>	<b>+N/-S (ft)</b>	<b>+E/-W (ft)</b>	<b>Direction (°)</b>	
	0.0	0.0	0.0	300.86	

<b>Plan Sections</b>										
Measured Depth (ft)	Inclination (°)	Azimuth (°)	Vertical Depth (ft)	+N/-S (ft)	+E/-W (ft)	Dogleg Rate (°/100ft)	Build Rate (°/100ft)	Turn Rate (°/100ft)	TFO (°)	Target
0.0	0.00	0.00	0.0	0.0	0.0	0.00	0.00	0.00	0.00	
200.0	0.00	0.00	200.0	0.0	0.0	0.00	0.00	0.00	0.00	
1,290.7	32.72	301.23	1,232.3	157.1	-259.1	3.00	3.00	0.00	301.23	
7,266.1	32.72	301.23	6,259.7	1,831.5	-3,021.2	0.00	0.00	0.00	0.00	
8,356.8	0.00	0.00	7,292.0	1,988.6	-3,280.3	3.00	-3.00	0.00	180.00	8508C-21 N22 496 TC
8,482.1	0.31	239.60	7,417.3	1,988.4	-3,280.6	0.25	0.25	-96.10	239.60	
12,016.8	0.31	239.60	10,952.0	1,978.7	-3,297.3	0.00	0.00	0.00	0.00	8508C-21 N22 496 PI
13,266.9	0.31	239.60	12,202.0	1,975.2	-3,303.2	0.00	0.00	0.00	0.00	
13,516.9	0.31	239.60	12,452.0	1,974.5	-3,304.3	0.00	0.00	0.00	0.00	

# Cathedral Energy

## Planning Report

<b>Database:</b>	EDM 5000.1 US Multi Users DB	<b>Local Co-ordinate Reference:</b>	Well 8508C-21 N22 496
<b>Company:</b>	EnCana Oil & Gas (USA) Inc	<b>TVD Reference:</b>	WELL @ 7602.0ft (Original Well Elev)
<b>Project:</b>	Story Gulch	<b>MD Reference:</b>	WELL @ 7602.0ft (Original Well Elev)
<b>Site:</b>	S22-T4S-R96W (N22 496) (Column Pattern)	<b>North Reference:</b>	True
<b>Well:</b>	8508C-21 N22 496	<b>Survey Calculation Method:</b>	Minimum Curvature
<b>Wellbore:</b>	DD		
<b>Design:</b>	Plan #1		

Planned Survey									
Measured Depth (ft)	Inclination (°)	Azimuth (°)	Vertical Depth (ft)	+N/-S (ft)	+E/-W (ft)	Vertical Section (ft)	Dogleg Rate (°/100ft)	Build Rate (°/100ft)	Comments / Formations
0.0	0.00	0.00	0.0	0.0	0.0	0.0	0.00	0.00	
100.0	0.00	0.00	100.0	0.0	0.0	0.0	0.00	0.00	
200.0	0.00	0.00	200.0	0.0	0.0	0.0	0.00	0.00	KOP @ 200'
252.0	1.56	301.23	252.0	0.4	-0.6	0.7	3.00	3.00	Para Creek (TVD)
300.0	3.00	301.23	300.0	1.4	-2.2	2.6	3.00	3.00	
400.0	6.00	301.23	399.6	5.4	-8.9	10.5	3.00	3.00	
500.0	9.00	301.23	498.8	12.2	-20.1	23.5	3.00	3.00	
554.0	10.62	301.23	552.0	17.0	-28.0	32.7	3.00	3.00	Mahog Bench (TVD)
600.0	12.00	301.23	597.1	21.6	-35.7	41.7	3.00	3.00	
615.3	12.46	301.23	612.0	23.3	-38.5	45.0	3.00	3.00	Base B Groove (TVD)
700.0	15.00	301.23	694.3	33.7	-55.6	65.1	3.00	3.00	
800.0	18.00	301.23	790.2	48.5	-79.9	93.5	3.00	3.00	
900.0	21.00	301.23	884.4	65.8	-108.5	126.8	3.00	3.00	
1,000.0	24.00	301.23	976.8	85.6	-141.2	165.1	3.00	3.00	
1,100.0	27.00	301.23	1,067.1	107.9	-178.0	208.2	3.00	3.00	
1,200.0	30.00	301.23	1,154.9	132.6	-218.8	255.9	3.00	3.00	
1,290.7	32.72	301.23	1,232.3	157.1	-259.1	303.0	3.00	3.00	EOB @ Inc. = 32.72°
1,300.0	32.72	301.23	1,240.2	159.7	-263.5	308.1	0.00	0.00	
1,400.0	32.72	301.23	1,324.3	187.7	-309.7	362.1	0.00	0.00	
1,500.0	32.72	301.23	1,408.5	215.8	-355.9	416.2	0.00	0.00	
1,600.0	32.72	301.23	1,492.6	243.8	-402.1	470.2	0.00	0.00	
1,700.0	32.72	301.23	1,576.7	271.8	-448.4	524.3	0.00	0.00	
1,800.0	32.72	301.23	1,660.9	299.8	-494.6	578.3	0.00	0.00	
1,900.0	32.72	301.23	1,745.0	327.8	-540.8	632.4	0.00	0.00	
2,000.0	32.72	301.23	1,829.1	355.9	-587.0	686.5	0.00	0.00	
2,100.0	32.72	301.23	1,913.3	383.9	-633.2	740.5	0.00	0.00	
2,200.0	32.72	301.23	1,997.4	411.9	-679.5	794.6	0.00	0.00	
2,300.0	32.72	301.23	2,081.5	439.9	-725.7	848.6	0.00	0.00	
2,400.0	32.72	301.23	2,165.7	468.0	-771.9	902.7	0.00	0.00	
2,500.0	32.72	301.23	2,249.8	496.0	-818.1	956.7	0.00	0.00	
2,600.0	32.72	301.23	2,333.9	524.0	-864.4	1,010.8	0.00	0.00	
2,700.0	32.72	301.23	2,418.1	552.0	-910.6	1,064.8	0.00	0.00	
2,800.0	32.72	301.23	2,502.2	580.0	-956.8	1,118.9	0.00	0.00	
2,900.0	32.72	301.23	2,586.3	608.1	-1,003.0	1,172.9	0.00	0.00	
3,000.0	32.72	301.23	2,670.5	636.1	-1,049.2	1,227.0	0.00	0.00	
3,100.0	32.72	301.23	2,754.6	664.1	-1,095.5	1,281.0	0.00	0.00	
3,200.0	32.72	301.23	2,838.7	692.1	-1,141.7	1,335.1	0.00	0.00	
3,300.0	32.72	301.23	2,922.8	720.1	-1,187.9	1,389.1	0.00	0.00	
3,400.0	32.72	301.23	3,007.0	748.2	-1,234.1	1,443.2	0.00	0.00	
3,500.0	32.72	301.23	3,091.1	776.2	-1,280.4	1,497.2	0.00	0.00	
3,600.0	32.72	301.23	3,175.2	804.2	-1,326.6	1,551.3	0.00	0.00	
3,700.0	32.72	301.23	3,259.4	832.2	-1,372.8	1,605.3	0.00	0.00	
3,800.0	32.72	301.23	3,343.5	860.2	-1,419.0	1,659.4	0.00	0.00	
3,900.0	32.72	301.23	3,427.6	888.3	-1,465.2	1,713.4	0.00	0.00	
4,000.0	32.72	301.23	3,511.8	916.3	-1,511.5	1,767.5	0.00	0.00	
4,100.0	32.72	301.23	3,595.9	944.3	-1,557.7	1,821.5	0.00	0.00	
4,200.0	32.72	301.23	3,680.0	972.3	-1,603.9	1,875.6	0.00	0.00	
4,300.0	32.72	301.23	3,764.2	1,000.4	-1,650.1	1,929.6	0.00	0.00	
4,400.0	32.72	301.23	3,848.3	1,028.4	-1,696.4	1,983.7	0.00	0.00	
4,500.0	32.72	301.23	3,932.4	1,056.4	-1,742.6	2,037.7	0.00	0.00	
4,600.0	32.72	301.23	4,016.6	1,084.4	-1,788.8	2,091.8	0.00	0.00	
4,700.0	32.72	301.23	4,100.7	1,112.4	-1,835.0	2,145.8	0.00	0.00	

# Cathedral Energy

## Planning Report

<b>Database:</b>	EDM 5000.1 US Multi Users DB	<b>Local Co-ordinate Reference:</b>	Well 8508C-21 N22 496
<b>Company:</b>	EnCana Oil & Gas (USA) Inc	<b>TVD Reference:</b>	WELL @ 7602.0ft (Original Well Elev)
<b>Project:</b>	Story Gulch	<b>MD Reference:</b>	WELL @ 7602.0ft (Original Well Elev)
<b>Site:</b>	S22-T4S-R96W (N22 496) (Column Pattern)	<b>North Reference:</b>	True
<b>Well:</b>	8508C-21 N22 496	<b>Survey Calculation Method:</b>	Minimum Curvature
<b>Wellbore:</b>	DD		
<b>Design:</b>	Plan #1		

Planned Survey									
Measured Depth (ft)	Inclination (°)	Azimuth (°)	Vertical Depth (ft)	+N/-S (ft)	+E/-W (ft)	Vertical Section (ft)	Dogleg Rate (°/100ft)	Build Rate (°/100ft)	Comments / Formations
4,761.0	32.72	301.23	4,152.0	1,129.5	-1,863.2	2,178.8	0.00	0.00	Was G (TVD)
4,800.0	32.72	301.23	4,184.8	1,140.5	-1,881.2	2,199.9	0.00	0.00	
4,900.0	32.72	301.23	4,269.0	1,168.5	-1,927.5	2,253.9	0.00	0.00	
5,000.0	32.72	301.23	4,353.1	1,196.5	-1,973.7	2,308.0	0.00	0.00	
5,100.0	32.72	301.23	4,437.2	1,224.5	-2,019.9	2,362.1	0.00	0.00	
5,200.0	32.72	301.23	4,521.4	1,252.5	-2,066.1	2,416.1	0.00	0.00	
5,300.0	32.72	301.23	4,605.5	1,280.6	-2,112.4	2,470.2	0.00	0.00	
5,400.0	32.72	301.23	4,689.6	1,308.6	-2,158.6	2,524.2	0.00	0.00	
5,500.0	32.72	301.23	4,773.8	1,336.6	-2,204.8	2,578.3	0.00	0.00	
5,600.0	32.72	301.23	4,857.9	1,364.6	-2,251.0	2,632.3	0.00	0.00	
5,700.0	32.72	301.23	4,942.0	1,392.7	-2,297.2	2,686.4	0.00	0.00	
5,800.0	32.72	301.23	5,026.2	1,420.7	-2,343.5	2,740.4	0.00	0.00	
5,900.0	32.72	301.23	5,110.3	1,448.7	-2,389.7	2,794.5	0.00	0.00	
6,000.0	32.72	301.23	5,194.4	1,476.7	-2,435.9	2,848.5	0.00	0.00	
6,100.0	32.72	301.23	5,278.6	1,504.7	-2,482.1	2,902.6	0.00	0.00	
6,200.0	32.72	301.23	5,362.7	1,532.8	-2,528.4	2,956.6	0.00	0.00	
6,300.0	32.72	301.23	5,446.8	1,560.8	-2,574.6	3,010.7	0.00	0.00	
6,400.0	32.72	301.23	5,531.0	1,588.8	-2,620.8	3,064.7	0.00	0.00	
6,500.0	32.72	301.23	5,615.1	1,616.8	-2,667.0	3,118.8	0.00	0.00	
6,600.0	32.72	301.23	5,699.2	1,644.8	-2,713.3	3,172.8	0.00	0.00	
6,700.0	32.72	301.23	5,783.4	1,672.9	-2,759.5	3,226.9	0.00	0.00	
6,800.0	32.72	301.23	5,867.5	1,700.9	-2,805.7	3,280.9	0.00	0.00	
6,900.0	32.72	301.23	5,951.6	1,728.9	-2,851.9	3,335.0	0.00	0.00	
7,000.0	32.72	301.23	6,035.8	1,756.9	-2,898.1	3,389.0	0.00	0.00	
7,100.0	32.72	301.23	6,119.9	1,785.0	-2,944.4	3,443.1	0.00	0.00	
7,200.0	32.72	301.23	6,204.0	1,813.0	-2,990.6	3,497.1	0.00	0.00	
7,266.1	32.72	301.23	6,259.7	1,831.5	-3,021.2	3,532.9	0.00	0.00	Start Drop -3.00
7,300.0	31.70	301.23	6,288.3	1,840.9	-3,036.6	3,550.9	3.00	-3.00	
7,400.0	28.70	301.23	6,374.7	1,866.9	-3,079.6	3,601.2	3.00	-3.00	
7,500.0	25.70	301.23	6,463.7	1,890.6	-3,118.7	3,646.9	3.00	-3.00	
7,600.0	22.70	301.23	6,554.9	1,911.9	-3,153.7	3,687.9	3.00	-3.00	
7,700.0	19.70	301.23	6,648.1	1,930.6	-3,184.7	3,724.1	3.00	-3.00	
7,800.0	16.70	301.23	6,743.1	1,946.8	-3,211.4	3,755.3	3.00	-3.00	
7,900.0	13.70	301.23	6,839.6	1,960.4	-3,233.8	3,781.6	3.00	-3.00	
8,000.0	10.70	301.23	6,937.3	1,971.4	-3,251.9	3,802.7	3.00	-3.00	
8,100.0	7.70	301.23	7,036.0	1,979.7	-3,265.6	3,818.7	3.00	-3.00	
8,200.0	4.70	301.23	7,135.4	1,985.3	-3,274.8	3,829.5	3.00	-3.00	
8,300.0	1.70	301.23	7,235.2	1,988.2	-3,279.6	3,835.1	3.00	-3.00	
8,316.8	1.20	301.23	7,252.0	1,988.4	-3,279.9	3,835.5	3.00	-3.00	WF (TVD) EOD @ Inc. = 0° - TOG (TVD) - 8508C-21 N22
8,356.8	0.00	0.00	7,292.0	1,988.6	-3,280.3	3,835.9	3.00	-3.00	
8,400.0	0.11	239.60	7,335.2	1,988.6	-3,280.3	3,835.9	0.25	0.25	
8,482.1	0.31	239.60	7,417.3	1,988.4	-3,280.6	3,836.1	0.25	0.25	
8,500.0	0.31	239.60	7,435.2	1,988.4	-3,280.7	3,836.1	0.00	0.00	
8,600.0	0.31	239.60	7,535.2	1,988.1	-3,281.2	3,836.4	0.00	0.00	
8,700.0	0.31	239.60	7,635.2	1,987.8	-3,281.6	3,836.7	0.00	0.00	
8,800.0	0.31	239.60	7,735.2	1,987.6	-3,282.1	3,836.9	0.00	0.00	
8,900.0	0.31	239.60	7,835.2	1,987.3	-3,282.6	3,837.2	0.00	0.00	
9,000.0	0.31	239.60	7,935.2	1,987.0	-3,283.0	3,837.5	0.00	0.00	
9,100.0	0.31	239.60	8,035.2	1,986.7	-3,283.5	3,837.7	0.00	0.00	
9,200.0	0.31	239.60	8,135.2	1,986.4	-3,284.0	3,838.0	0.00	0.00	
9,300.0	0.31	239.60	8,235.2	1,986.2	-3,284.5	3,838.2	0.00	0.00	
9,400.0	0.31	239.60	8,335.2	1,985.9	-3,284.9	3,838.5	0.00	0.00	

# Cathedral Energy

## Planning Report

<b>Database:</b>	EDM 5000.1 US Multi Users DB	<b>Local Co-ordinate Reference:</b>	Well 8508C-21 N22 496
<b>Company:</b>	EnCana Oil & Gas (USA) Inc	<b>TVD Reference:</b>	WELL @ 7602.0ft (Original Well Elev)
<b>Project:</b>	Story Gulch	<b>MD Reference:</b>	WELL @ 7602.0ft (Original Well Elev)
<b>Site:</b>	S22-T4S-R96W (N22 496) (Column Pattern)	<b>North Reference:</b>	True
<b>Well:</b>	8508C-21 N22 496	<b>Survey Calculation Method:</b>	Minimum Curvature
<b>Wellbore:</b>	DD		
<b>Design:</b>	Plan #1		

Planned Survey									
Measured Depth (ft)	Inclination (°)	Azimuth (°)	Vertical Depth (ft)	+N/-S (ft)	+E/-W (ft)	Vertical Section (ft)	Dogleg Rate (°/100ft)	Build Rate (°/100ft)	Comments / Formations
9,500.0	0.31	239.60	8,435.2	1,985.6	-3,285.4	3,838.8	0.00	0.00	
9,600.0	0.31	239.60	8,535.2	1,985.3	-3,285.9	3,839.0	0.00	0.00	
9,700.0	0.31	239.60	8,635.2	1,985.1	-3,286.3	3,839.3	0.00	0.00	
9,800.0	0.31	239.60	8,735.2	1,984.8	-3,286.8	3,839.6	0.00	0.00	
9,900.0	0.31	239.60	8,835.2	1,984.5	-3,287.3	3,839.8	0.00	0.00	
10,000.0	0.31	239.60	8,935.2	1,984.2	-3,287.8	3,840.1	0.00	0.00	
10,100.0	0.31	239.60	9,035.2	1,984.0	-3,288.2	3,840.3	0.00	0.00	
10,200.0	0.31	239.60	9,135.2	1,983.7	-3,288.7	3,840.6	0.00	0.00	
10,300.0	0.31	239.60	9,235.2	1,983.4	-3,289.2	3,840.9	0.00	0.00	
10,400.0	0.31	239.60	9,335.2	1,983.1	-3,289.6	3,841.1	0.00	0.00	
10,500.0	0.31	239.60	9,435.2	1,982.8	-3,290.1	3,841.4	0.00	0.00	
10,600.0	0.31	239.60	9,535.2	1,982.6	-3,290.6	3,841.7	0.00	0.00	
10,700.0	0.31	239.60	9,635.2	1,982.3	-3,291.1	3,841.9	0.00	0.00	
10,800.0	0.31	239.60	9,735.2	1,982.0	-3,291.5	3,842.2	0.00	0.00	
10,900.0	0.31	239.60	9,835.2	1,981.7	-3,292.0	3,842.4	0.00	0.00	
11,000.0	0.31	239.60	9,935.2	1,981.5	-3,292.5	3,842.7	0.00	0.00	
11,100.0	0.31	239.60	10,035.2	1,981.2	-3,292.9	3,843.0	0.00	0.00	
11,200.0	0.31	239.60	10,135.2	1,980.9	-3,293.4	3,843.2	0.00	0.00	
11,300.0	0.31	239.60	10,235.2	1,980.6	-3,293.9	3,843.5	0.00	0.00	
11,400.0	0.31	239.60	10,335.2	1,980.4	-3,294.4	3,843.8	0.00	0.00	
11,500.0	0.31	239.60	10,435.2	1,980.1	-3,294.8	3,844.0	0.00	0.00	
11,600.0	0.31	239.60	10,535.2	1,979.8	-3,295.3	3,844.3	0.00	0.00	
11,700.0	0.31	239.60	10,635.2	1,979.5	-3,295.8	3,844.5	0.00	0.00	
11,800.0	0.31	239.60	10,735.2	1,979.3	-3,296.2	3,844.8	0.00	0.00	
11,900.0	0.31	239.60	10,835.2	1,979.0	-3,296.7	3,845.1	0.00	0.00	
12,000.0	0.31	239.60	10,935.2	1,978.7	-3,297.2	3,845.3	0.00	0.00	
12,016.8	0.31	239.60	10,952.0	1,978.7	-3,297.3	3,845.4	0.00	0.00	Rins (TVD) - 8508C-21 N22 496 PBHL (Column
12,100.0	0.31	239.60	11,035.2	1,978.4	-3,297.7	3,845.6	0.00	0.00	
12,200.0	0.31	239.60	11,135.2	1,978.1	-3,298.1	3,845.9	0.00	0.00	
12,300.0	0.31	239.60	11,235.2	1,977.9	-3,298.6	3,846.1	0.00	0.00	
12,346.9	0.31	239.60	11,282.0	1,977.7	-3,298.8	3,846.2	0.00	0.00	Cozz (TVD)
12,400.0	0.31	239.60	11,335.1	1,977.6	-3,299.1	3,846.4	0.00	0.00	
12,500.0	0.31	239.60	11,435.1	1,977.3	-3,299.5	3,846.7	0.00	0.00	
12,536.9	0.31	239.60	11,472.0	1,977.2	-3,299.7	3,846.7	0.00	0.00	Corc (TVD)
12,600.0	0.31	239.60	11,535.1	1,977.0	-3,300.0	3,846.9	0.00	0.00	
12,700.0	0.31	239.60	11,635.1	1,976.8	-3,300.5	3,847.2	0.00	0.00	
12,800.0	0.31	239.60	11,735.1	1,976.5	-3,301.0	3,847.4	0.00	0.00	
12,816.9	0.31	239.60	11,752.0	1,976.4	-3,301.0	3,847.5	0.00	0.00	Sego (TVD)
12,900.0	0.31	239.60	11,835.1	1,976.2	-3,301.4	3,847.7	0.00	0.00	
13,000.0	0.31	239.60	11,935.1	1,975.9	-3,301.9	3,848.0	0.00	0.00	
13,016.9	0.31	239.60	11,952.0	1,975.9	-3,302.0	3,848.0	0.00	0.00	L Sego (TVD)
13,100.0	0.31	239.60	12,035.1	1,975.7	-3,302.4	3,848.2	0.00	0.00	
13,200.0	0.31	239.60	12,135.1	1,975.4	-3,302.8	3,848.5	0.00	0.00	
13,266.9	0.31	239.60	12,202.0	1,975.2	-3,303.2	3,848.7	0.00	0.00	Drillers TD @ 13,266' MD
13,300.0	0.31	239.60	12,235.1	1,975.1	-3,303.3	3,848.8	0.00	0.00	
13,400.0	0.31	239.60	12,335.1	1,974.8	-3,303.8	3,849.0	0.00	0.00	
13,500.0	0.31	239.60	12,435.1	1,974.5	-3,304.3	3,849.3	0.00	0.00	
13,516.9	0.31	239.60	12,452.0	1,974.5	-3,304.3	3,849.3	0.00	0.00	

# Cathedral Energy

## Planning Report

<b>Database:</b>	EDM 5000.1 US Multi Users DB	<b>Local Co-ordinate Reference:</b>	Well 8508C-21 N22 496
<b>Company:</b>	EnCana Oil & Gas (USA) Inc	<b>TVD Reference:</b>	WELL @ 7602.0ft (Original Well Elev)
<b>Project:</b>	Story Gulch	<b>MD Reference:</b>	WELL @ 7602.0ft (Original Well Elev)
<b>Site:</b>	S22-T4S-R96W (N22 496) (Column Pattern)	<b>North Reference:</b>	True
<b>Well:</b>	8508C-21 N22 496	<b>Survey Calculation Method:</b>	Minimum Curvature
<b>Wellbore:</b>	DD		
<b>Design:</b>	Plan #1		

Targets									
Target Name									
- hit/miss target	Dip Angle	Dip Dir.	TVD	+N/-S	+E/-W	Northing	Easting	Latitude	Longitude
- Shape	(°)	(°)	(ft)	(ft)	(ft)	(ft)	(ft)		
8508C-21 N22 496 PBH	0.00	0.00	10,952.0	1,978.7	-3,297.3	1,687,075.17	2,249,048.11	39° 41' 22.31 N	108° 10' 7.66 W
- plan hits target center									
- Rectangle (sides W30.0 H50.0 D0.0)									
8508C-21 N22 496 TGT	0.00	0.00	7,292.0	1,988.6	-3,280.3	1,687,084.62	2,249,065.36	39° 41' 22.41 N	108° 10' 7.45 W
- plan hits target center									
- Point									

Formations						
Measured Depth	Vertical Depth	Name	Lithology	Dip	Dip Direction	
(ft)	(ft)			(°)	(°)	
252.0	252.0	Para Creek (TVD)				
554.0	552.0	Mahog Bench (TVD)				
615.3	612.0	Base B Groove (TVD)				
4,761.0	4,152.0	Was G (TVD)				
8,316.8	7,252.0	WF (TVD)				
8,356.8	7,292.0	TOG (TVD)				
12,016.8	10,952.0	Rlms (TVD)				
12,346.9	11,282.0	Cozz (TVD)				
12,536.9	11,472.0	Corc (TVD)				
12,816.9	11,752.0	Sego (TVD)				
13,016.9	11,952.0	L Sego (TVD)				

Plan Annotations				
Measured Depth	Vertical Depth	Local Coordinates		Comment
(ft)	(ft)	+N/-S (ft)	+E/-W (ft)	
200.0	200.0	0.0	0.0	KOP @ 200'
1,290.7	1,232.3	157.1	-259.1	EOB @ Inc. = 32.72°
7,266.1	6,259.7	1,831.5	-3,021.2	Start Drop -3.00
8,356.8	7,292.0	1,988.6	-3,280.3	EOD @ Inc. = 0°
13,266.9	12,202.0	1,988.4	-3,280.6	Drillers TD @ 13,266' MD
13,516.9	12,452.0	1,978.7	-3,297.3	Permit TD @ 13,516' MD