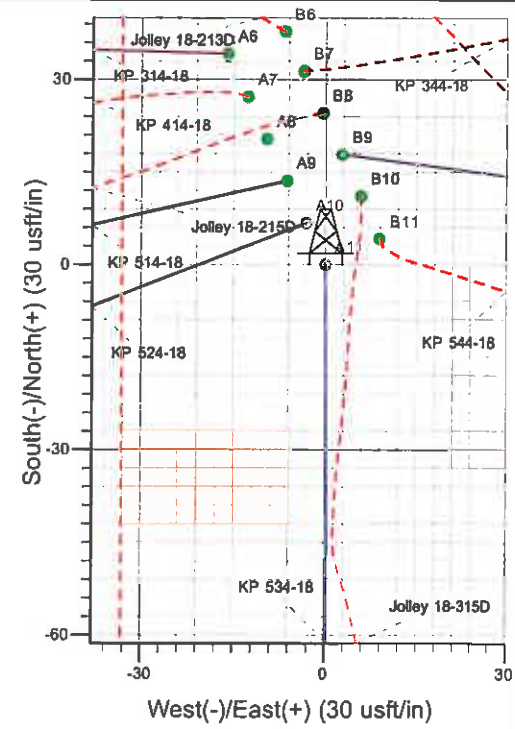
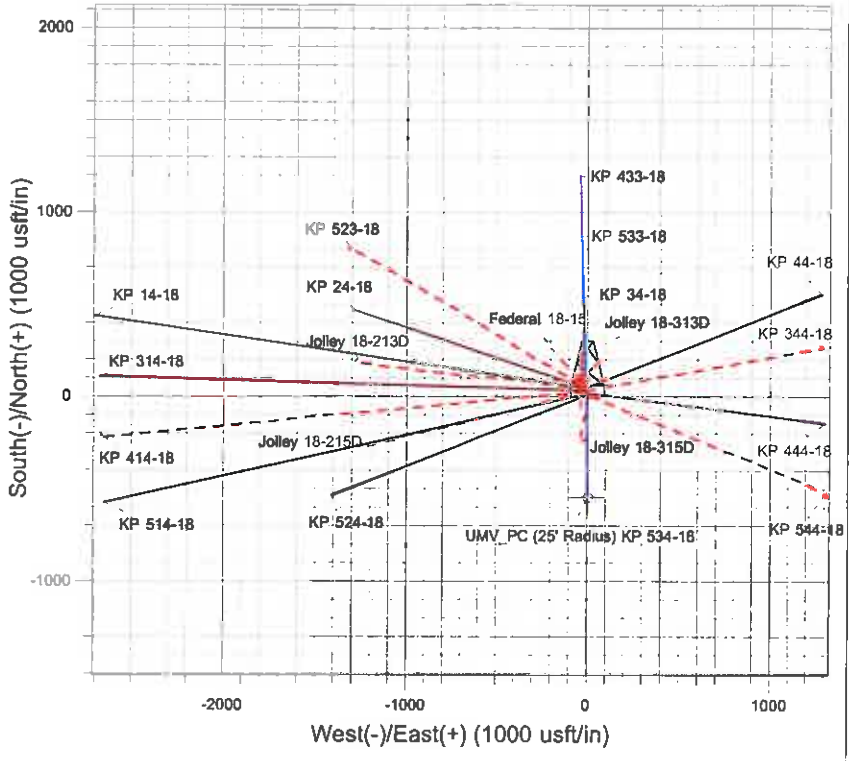
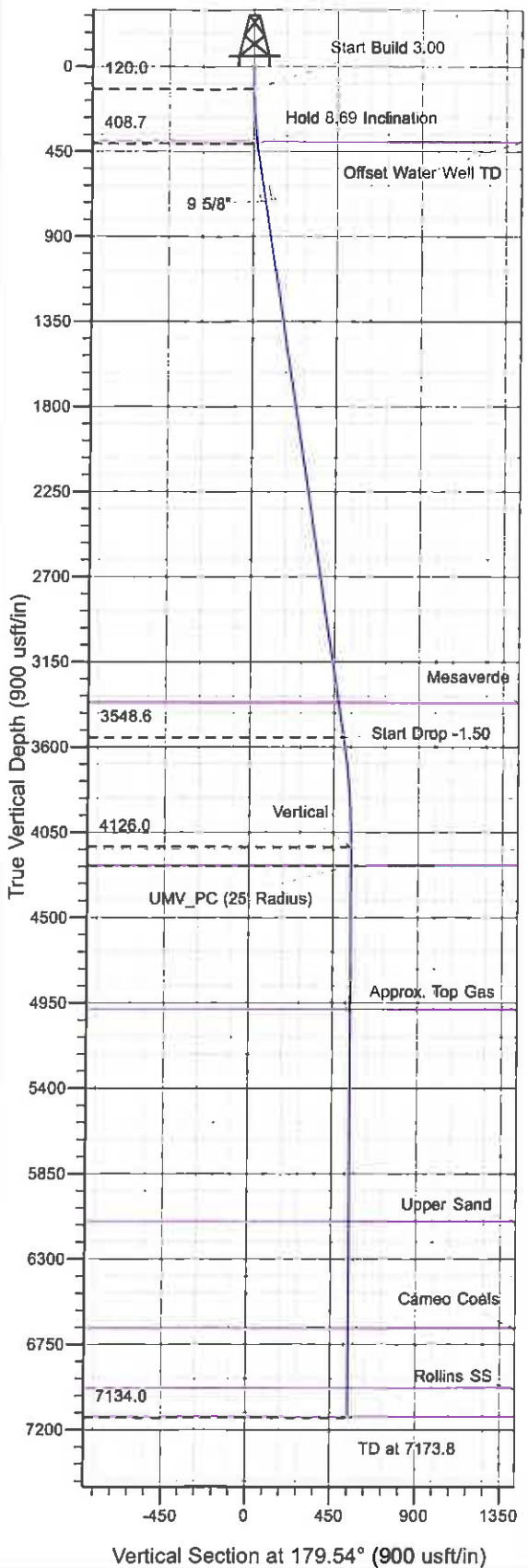




Well Name: KP 534-18  
 Surface Location: KP 34-18 Pad  
 North American Datum 1983 , US State Plane 1983 , Colorado Central Zone  
 Ground Elevation: 5918.0

+N/-S	+E/-W	Northing	Easting	Latitude	Longitude	Slot
0.0	0.0	1621883.10	2409156.90	39° 31' 19.735 N	107° 35' 40.789 W	A11

KELLY BUSHING @ 5941.0usft (Cyclone 30 (23' RKB) kjs)



Project: Sec. 18-T6S-R91W  
 Site: KP 34-18 Pad  
 Well: KP 534-18  
 Design #1 04Dec09 kjs

**M**  
 Azimuths to True North  
 Magnetic North: 10.35°  
 Magnetic Field  
 Strength: 52499.1snT  
 Dip Angle: 65.89°  
 Date: 12/4/2009  
 Model: IGRF2005-10

ANNOTATIONS									
TVD	MD	Inc	Azi	+N/-S	+E/-W	VSec	Departure	Annotation	
120.0	120.0	0.00	0.00	0.0	0.0	0.0	0.0	0.0	Start Build 3.00
408.7	409.8	8.69	179.54	-21.9	0.2	21.9	21.9	0.0	Hold 8.69 Inclination
3548.6	3586.2	8.69	179.54	-502.1	4.0	502.1	502.1	0.0	Start Drop -1.50
4126.0	4165.8	0.00	0.00	-546.0	4.4	546.0	546.0	0.0	Vertical
4226.0	4265.8	0.00	0.00	-546.0	4.4	546.0	546.0	0.0	UMW_PC
7134.0	7173.8	0.00	0.00	-546.0	4.4	546.0	546.0	0.0	TD at 7173.8

# **KOKOPELLI FIELD**

**Sec. 18-T6S-R91W**

**KP 34-18 Pad**

**KP 534-18 - Slot A11**

**Wellbore #1**

**Plan: Design #1 04Dec09 kjs**

## **Standard Planning Report - Geographic**

**18 March, 2011**

**Williams**  
Planning Report - Geographic

Database:	Compass R5000 WIN AUTH	Local Co-ordinate Reference:	Well KP 534-18 - Slot A11
Company:	KOKOPELLI FIELD	TVD Reference:	KELLY BUSHING @ 5941.0usft (Cyclone 30 (23' RKB) kjs)
Project:	Sec. 18-T6S-R91W	MD Reference:	KELLY BUSHING @ 5941.0usft (Cyclone 30 (23' RKB) kjs)
Site:	KP 34-18 Pad	North Reference:	True
Well:	KP 534-18	Survey Calculation Method:	Minimum Curvature
Wellbore:	Wellbore #1		
Design:	Design #1 04Dec09 kjs		

Project	Sec. 18-T6S-R91W, Garfield County, CO		
Map System:	US State Plane 1983	System Datum:	Mean Sea Level
Geo Datum:	North American Datum 1983		
Map Zone:	Colorado Central Zone		Using geodetic scale factor

Site	KP 34-18 Pad				
Site Position:		Northing:	1,621,893.85 usft	Latitude:	39° 31' 19.842 N
From:	Map	Easting:	2,409,163.01 usft	Longitude:	107° 35' 40.714 W
Position Uncertainty:	0.0 usft	Slot Radius:	0 "	Grid Convergence:	-1.32 °

Well	KP 534-18 - Slot A11					
Well Position	+N-S	0.0 usft	Northing:	1,621,883.10 usft	Latitude:	39° 31' 19.735 N
	+E-W	0.0 usft	Easting:	2,409,156.90 usft	Longitude:	107° 35' 40.789 W
Position Uncertainty		0.0 usft	Wellhead Elevation:		Ground Level:	5,918.0 usft

Wellbore	Wellbore #1				
Magnetics	Model Name	Sample Date	Declination (°)	Dip Angle (°)	Field Strength (nT)
	IGRF2005-10	12/4/2009	10.35	65.89	52,499

Design	Design #1 04Dec09 kjs			
Audit Notes:				
Version:	Phase:	PLAN	Tie On Depth:	0.0
Vertical Section:	Depth From (TVD) (usft)	+N-S (usft)	+E-W (usft)	Direction (°)
	0.0	0.0	0.0	179.54

Plan Sections										
Measured Depth (usft)	Inclination (°)	Azimuth (°)	Vertical Depth (usft)	+N-S (usft)	+E-W (usft)	Dogleg Rate (°/100usft)	Build Rate ("/100usft)	Turn Rate ("/100usft)	TFO (°)	Target
0.0	0.00	0.00	0.0	0.0	0.0	0.00	0.00	0.00	0.00	
120.0	0.00	0.00	120.0	0.0	0.0	0.00	0.00	0.00	0.00	
409.8	8.69	179.54	408.7	-21.9	0.2	3.00	3.00	0.00	179.54	
3,586.2	8.69	179.54	3,548.6	-502.1	4.0	0.00	0.00	0.00	0.00	
4,165.8	0.00	0.00	4,126.0	-546.0	4.4	1.50	-1.50	0.00	180.00	
4,265.8	0.00	0.00	4,226.0	-546.0	4.4	0.00	0.00	0.00	0.00	UMV_PC (25' Radius)
7,173.8	0.00	0.00	7,134.0	-546.0	4.4	0.00	0.00	0.00	0.00	

**Williams**  
Planning Report - Geographic

<b>Database:</b>	Compass R5000 WIN AUTH	<b>Local Co-ordinate Reference:</b>	Well KP 534-18 - Slot A11
<b>Company:</b>	KOKOPELLI FIELD	<b>TVD Reference:</b>	KELLY BUSHING @ 5941.0usft (Cyclone 30 (23' RKB) kjs)
<b>Project:</b>	Sec. 18-T6S-R91W	<b>MD Reference:</b>	KELLY BUSHING @ 5941.0usft (Cyclone 30 (23' RKB) kjs)
<b>Site:</b>	KP 34-18 Pad	<b>North Reference:</b>	True
<b>Well:</b>	KP 534-18	<b>Survey Calculation Method:</b>	Minimum Curvature
<b>Wellbore:</b>	Wellbore #1		
<b>Design:</b>	Design #1 04Dec09 kjs		

Planned Survey										
Measured Depth (usft)	Inclination (°)	Azimuth (°)	Vertical Depth (usft)	+N/-S (usft)	+E/-W (usft)	Map Northing (usft)	Map Easting (usft)	Latitude	Longitude	
0.0	0.00	0.00	0.0	0.0	0.0	1,621,883.10	2,409,156.90	39° 31' 19.735 N	107° 35' 40.789 W	
120.0	0.00	0.00	120.0	0.0	0.0	1,621,883.10	2,409,156.90	39° 31' 19.735 N	107° 35' 40.789 W	
<b>Start Build 3.00</b>										
398.0	8.34	179.54	397.0	-20.2	0.2	1,621,862.90	2,409,156.60	39° 31' 19.535 N	107° 35' 40.787 W	
<b>Offset Water Well TD</b>										
409.8	8.69	179.54	408.7	-21.9	0.2	1,621,861.15	2,409,156.57	39° 31' 19.510 N	107° 35' 40.787 W	
<b>Hold 8.69 inclination</b>										
717.0	8.69	179.54	712.4	-68.4	0.5	1,621,814.73	2,409,155.88	39° 31' 19.059 N	107° 35' 40.782 W	
<b>9 5/8"</b>										
3,400.5	8.69	179.54	3,365.0	-474.0	3.8	1,621,409.15	2,409,149.78	39° 31' 15.050 N	107° 35' 40.740 W	
<b>Mesaverde</b>										
3,586.2	8.69	179.54	3,548.6	-502.1	4.0	1,621,381.08	2,409,149.36	39° 31' 14.772 N	107° 35' 40.738 W	
<b>Start Drop -1.50</b>										
4,165.8	0.00	0.00	4,126.0	-546.0	4.4	1,621,337.20	2,409,148.70	39° 31' 14.339 N	107° 35' 40.733 W	
<b>Vertical</b>										
4,265.8	0.00	0.00	4,226.0	-546.0	4.4	1,621,337.20	2,409,148.70	39° 31' 14.339 N	107° 35' 40.733 W	
<b>UMV_PC - UMV_PC</b>										
5,023.8	0.00	0.00	4,984.0	-546.0	4.4	1,621,337.20	2,409,148.70	39° 31' 14.339 N	107° 35' 40.733 W	
<b>Approx. Top Gas</b>										
6,143.8	0.00	0.00	6,104.0	-546.0	4.4	1,621,337.20	2,409,148.70	39° 31' 14.339 N	107° 35' 40.733 W	
<b>Upper Sand</b>										
6,708.8	0.00	0.00	6,669.0	-546.0	4.4	1,621,337.20	2,409,148.70	39° 31' 14.339 N	107° 35' 40.733 W	
<b>Cameo Coals</b>										
7,023.8	0.00	0.00	6,984.0	-546.0	4.4	1,621,337.20	2,409,148.70	39° 31' 14.339 N	107° 35' 40.733 W	
<b>Rollins SS</b>										
7,173.8	0.00	0.00	7,134.0	-546.0	4.4	1,621,337.20	2,409,148.70	39° 31' 14.339 N	107° 35' 40.733 W	
<b>TD at 7173.8 - TD</b>										

Design Targets										
Target Name	Dip Angle (°)	Dip Dir. (°)	TVD (usft)	+N/-S (usft)	+E/-W (usft)	Northing (usft)	Easting (usft)	Latitude	Longitude	
UMV_PC (25' Radius) K - hit/miss target - Shape - Circle (radius 25.0)	0.00	0.00	4,226.0	-546.0	4.4	1,621,337.20	2,409,148.70	39° 31' 14.339 N	107° 35' 40.733 W	

Casing Points						
Measured Depth (usft)	Vertical Depth (usft)		Name	Casing Diameter (")	Hole Diameter (")	
717.0	712.4	9 5/8"		9-5/8	12-1/4	

**Williams**  
 Planning Report - Geographic

<b>Database:</b>	Compass R5000 WIN AUTH	<b>Local Co-ordinate Reference:</b>	Well KP 534-18 - Slot A11
<b>Company:</b>	KOKOPELLI FIELD	<b>TVD Reference:</b>	KELLY BUSHING @ 5941.0usft (Cyclone 30 (23' RKB) kjs)
<b>Project:</b>	Sec. 18-T6S-R91W	<b>MD Reference:</b>	KELLY BUSHING @ 5941.0usft (Cyclone 30 (23' RKB) kjs)
<b>Site:</b>	KP 34-18 Pad	<b>North Reference:</b>	True
<b>Well:</b>	KP 534-18	<b>Survey Calculation Method:</b>	Minimum Curvature
<b>Wellbore:</b>	Wellbore #1		
<b>Design:</b>	Design #1 04Dec09 kjs		

Formations						
Measured Depth (usft)	Vertical Depth (usft)	Name	Lithology	Dip (°)	Dip Direction (°)	
398.0	397.0	Offset Water Well TD				
3,400.5	3,365.0	Mesaverde				
4,265.8	4,226.0	UMV_PC				
5,023.8	4,984.0	Approx. Top Gas				
6,143.8	6,104.0	Upper Sand				
6,708.8	6,669.0	Cameo Coals				
7,023.8	6,984.0	Rollins SS				
7,173.8	7,134.0	TD				

Plan Annotations					
Measured Depth (usft)	Vertical Depth (usft)	Local Coordinates		Comment	
		+N/-S (usft)	+E/-W (usft)		
120.0	120.0	0.0	0.0	Start Build 3.00	
409.8	408.7	-21.9	0.2	Hold 8.69 Inclination	
3,586.2	3,548.6	-502.1	4.0	Start Drop -1.50	
4,165.8	4,126.0	-546.0	4.4	Vertical	
4,265.8	4,226.0	-546.0	4.4	UMV_PC	
7,173.8	7,134.0	-546.0	4.4	TD at 7173.8	