

T4S, R96W, 6th P.M.

Encana Oil & Gas (USA) INC.

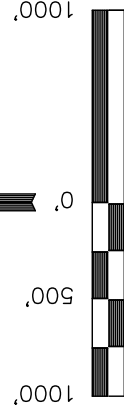
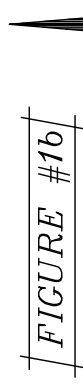
Well location, SG #8503E-22 N22 496, located as shown in Lot 5 of Section 22, T4S, R96W, 6th P.M., Garfield County, Colorado.

BASIS OF ELEVATION

BENCH MARK (H79) LOCATED IN THE NE 1/4 OF SECTION 35, T4S, R98W, 6th P.M. TAKEN FROM THE BULL FORK QUADRANGLE, COLORADO, 7.5 MINUTE SERIES (TOPO GRAPHICAL MAP) PUBLISHED BY THE UNITED STATES DEPARTMENT OF THE INTERIOR, GEOLOGICAL SURVEY. SAID ELEVATION IS MARKED AS BEING 8535 FEET.

BASIS OF BEARINGS

BASIS OF BEARINGS IS A G.P.S. OBSERVATION.



CERTIFICATE

THIS IS TO CERTIFY THAT THE ABOVE PLATO WAS PREPARED FROM FIELD NOTES OF ACTUAL SURVEYS MADE BY ME OR UNDER MY SUPERVISION AND THAT THE SAME ARE TRUE AND CORRECT TO THE BEST OF MY KNOWLEDGE AND BELIEF.

1953 Brass Cap
0.8' High, Steel
Post
Lat: 39.680583
Long: 108.145383

REVISÉ: 12-14-10

UNTAH ENGINEERING & LAND SURVEYING

85 SOUTH 200 EAST - VERNAL, UTAH 84078

(435) 789-1017

SCALE	1" = 1000'	DATE SURVEYED:	DATE DRAWN:
PARTY	B.H. B.J. C.H.	REFERENCES	11-23-10
WEATHER	COOL	G.L.O. PLAT	
		FILE	
			Encana OIL & GAS (USA) INC.

LEGEND:

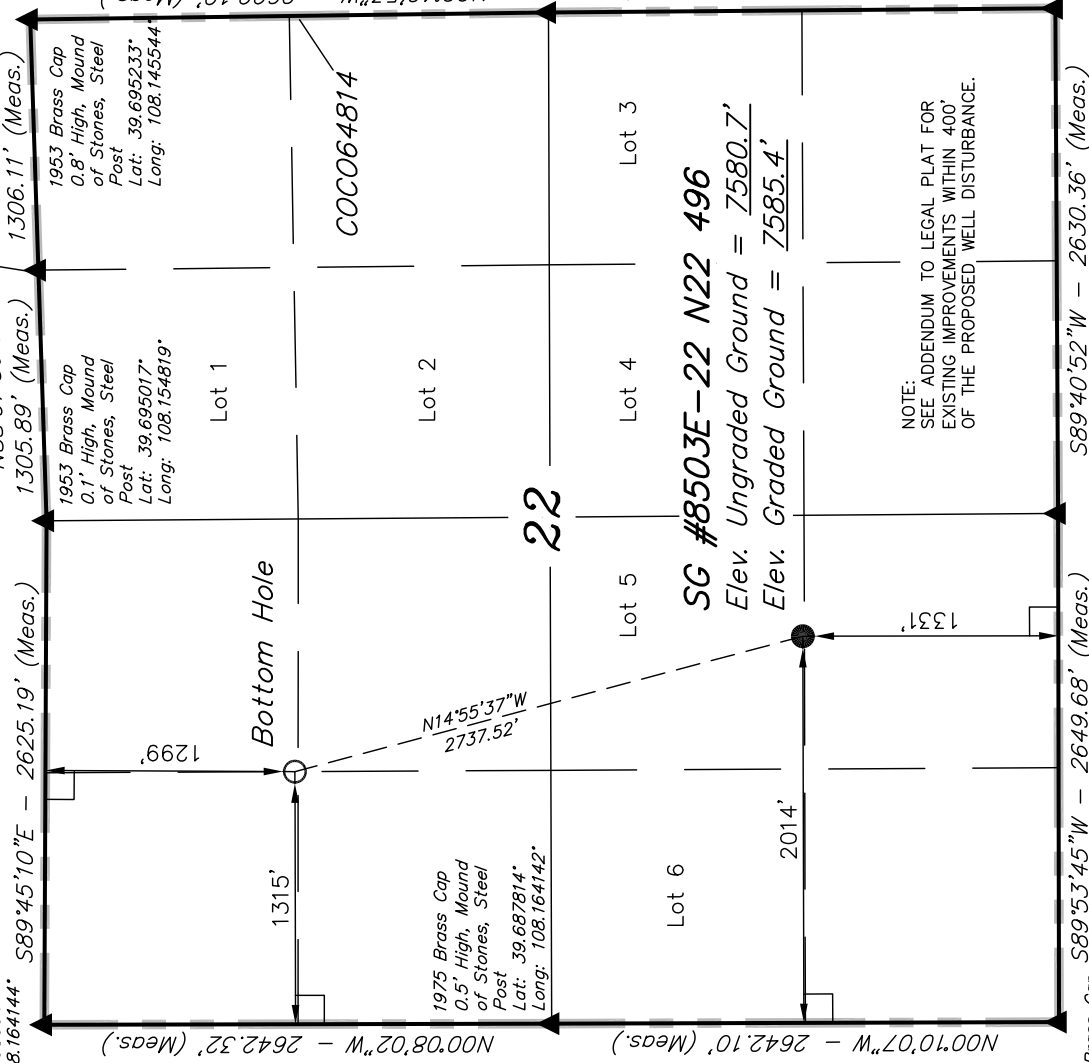
$$\angle = 90^\circ \text{ SYMBOL}$$

● = PROPOSED WELL HEAD.

▲ = SECTION CORNERS LOCATED.

NAD 83 (TARGET BOTTOM HOLE)	NAD 83 (SURFACE LOCATION)
LATITUDE = 39°41'29.31" (39.691475)	LATITUDE = 39°40'75.16" (39.684211)
LONGITUDE = 108°09'24.09" (108.159469)	LONGITUDE = 108°09'25.15" (108.156986)
NAD 27 (TARGET BOTTOM HOLE)	NAD 27 (SURFACE LOCATION)
LATITUDE = 39°41'29.40" (39.691508)	LATITUDE = 39°40'73.25" (39.684236)
LONGITUDE = 108°09'31.80" (108.158833)	LONGITUDE = 108°09'22.86" (108.156350)

PDOP = 4.1



NOTE:
SEE ADDENDUM TO LEGAL PLAT FOR
EXISTING IMPROVEMENTS WITHIN 400'
OF THE PROPOSED WELL DISTURBANCE.

SG #8503E-22 N22 N22 496

Elev. Ungraded Ground = $\frac{7580.7'}{7585.4'}$

COC064814