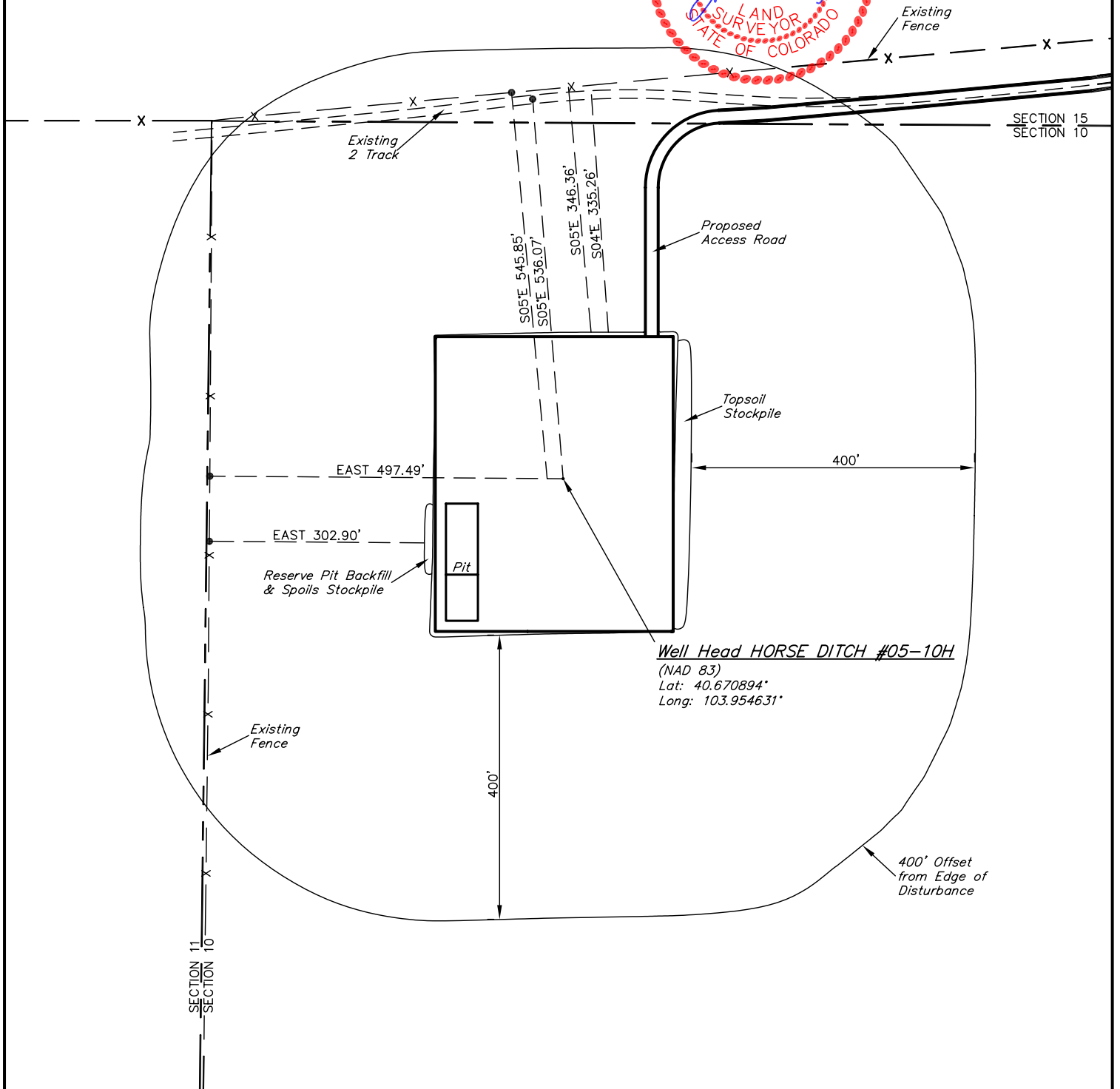


EOG RESOURCES, INC.

ADDENDUM TO LEGAL PLAT FOR
HORSE DITCH #05-10H
SECTION 10, T8N, R59W, 6th. P.M.
501' FSL 501' FEL

SCALE: 1" = 200'
DATE: 01-11-11
DRAWN BY: J.I.



EOG RESOURCES, INC.

CONSTRUCTION LAYOUT FOR

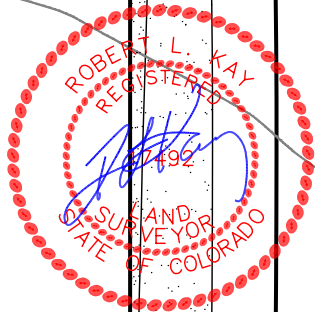
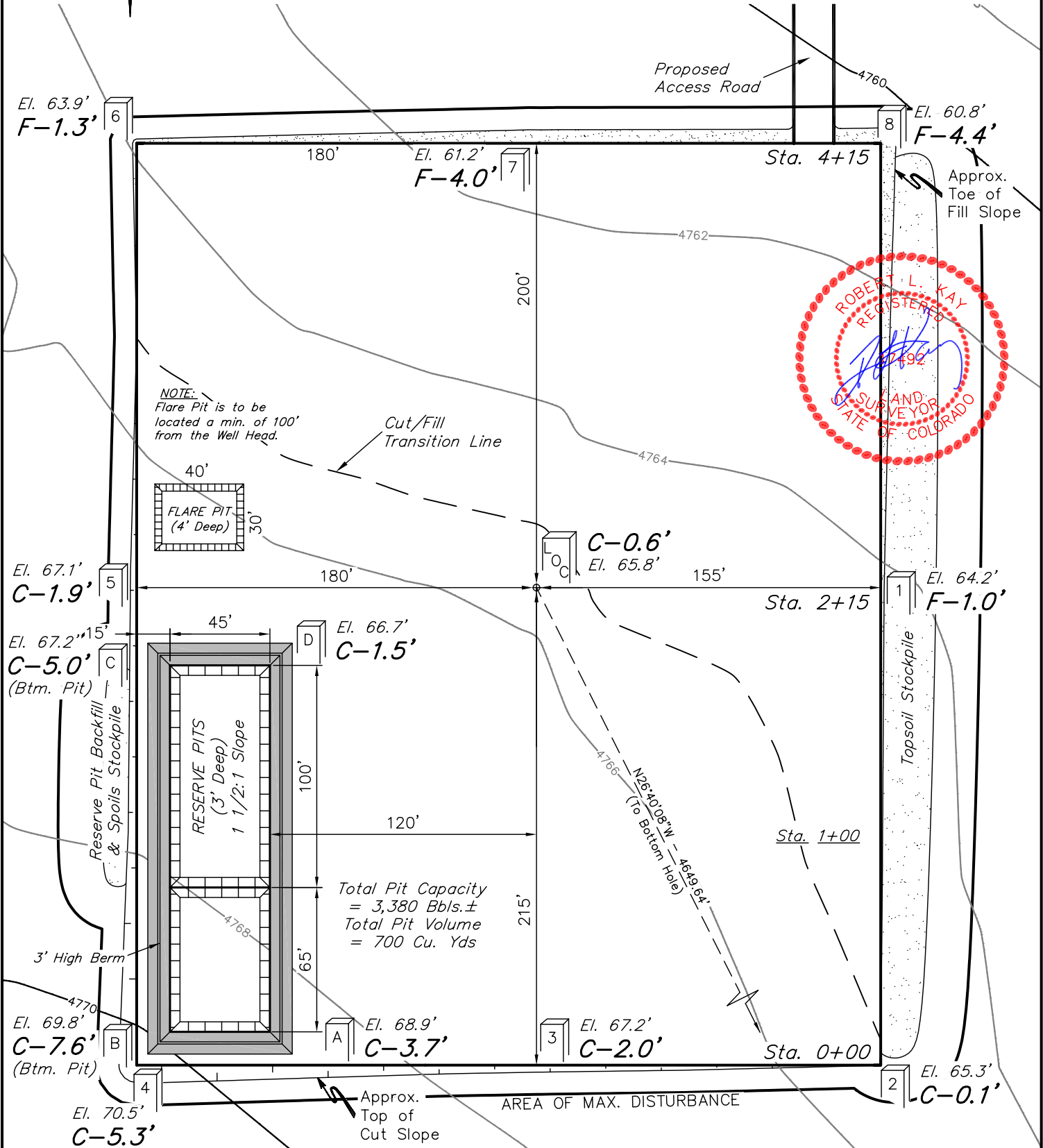
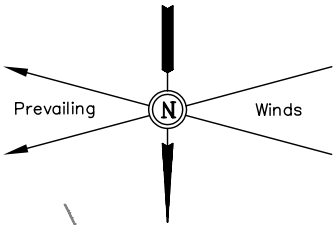
HORSE DITCH #05-10H
SECTION 10, T8N, R59W, 6th. P.M.
501' FSL 501' FEL

FIGURE #1

SCALE: 1" = 60'

DATE: 01-11-11

DRAWN BY: J.I.



Elev. Ungraded Ground At Loc. Stake = **4765.8'**
FINISHED GRADE ELEV. AT LOC. STAKE = **4765.2'**

UINTAH ENGINEERING & LAND SURVEYING
85 So. 200 East * Vernal, Utah 84078 * (435) 789-1017

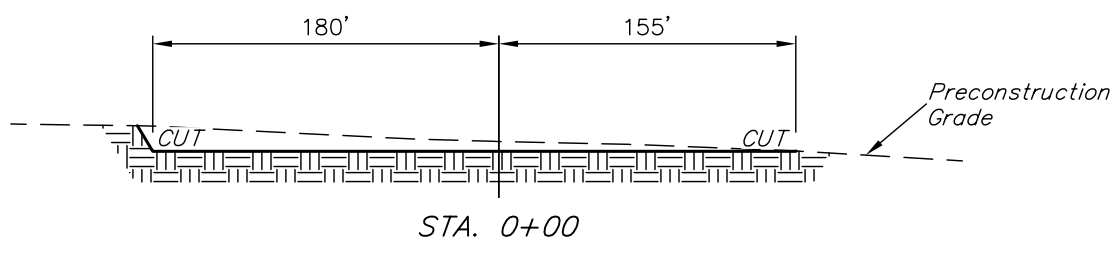
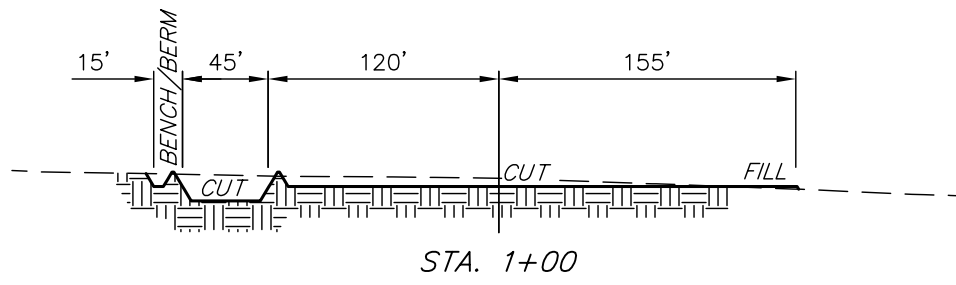
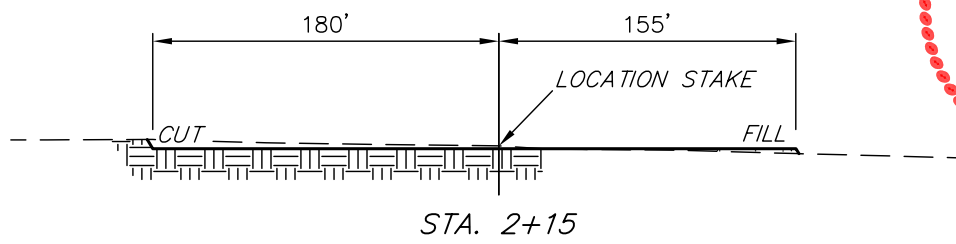
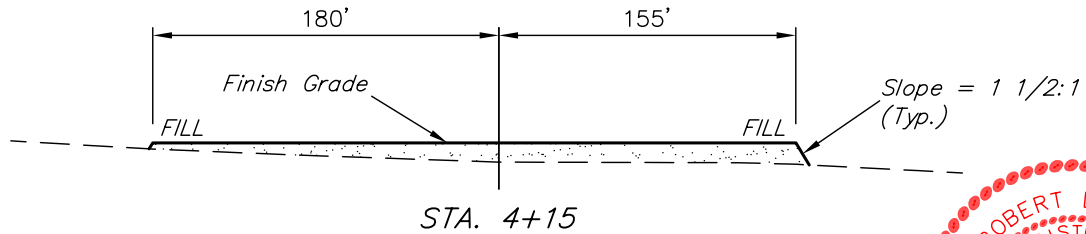
EOG RESOURCES, INC.

FIGURE #2

CONSTRUCTION LAYOUT CROSS SECTIONS FOR
HORSE DITCH #05-10H
SECTION 10, T8N, R59W, 6th. P.M.
501' FSL 501' FEL

1" = 40'
X-Section Scale
1" = 100'

DATE: 01-11-11
DRAWN BY: J.I.



NOTE:

Topsoil should not be Stripped Below Finished Grade on Substructure Area.

APPROXIMATE ACREAGES
WELL SITE DISTURBANCE = ± 4.042 ACRES
ACCESS ROAD DISTURBANCE = ± 3.458 ACRES
TOTAL = ± 7.500 ACRES

* NOTE:
FILL QUANTITY INCLUDES 5% FOR COMPACTION

APPROXIMATE YARDAGES

(6") Topsoil Stripping	=	2,720 Cu. Yds.
Remaining Location	=	4,650 Cu. Yds.
TOTAL CUT	=	7,370 CU.YDS.
FILL	=	4,300 CU.YDS.

EXCESS MATERIAL	=	3,070 Cu. Yds.
Topsoil & Pit Backfill (1/2 Pit Vol.)	=	3,070 Cu. Yds.
EXCESS UNBALANCE (After Interim Rehabilitation)	=	0 Cu. Yds.

UINTAH ENGINEERING & LAND SURVEYING
85 So. 200 East * Vernal, Utah 84078 * (435) 789-1017

EOG RESOURCES, INC.

TYPICAL RIG LAYOUT FOR

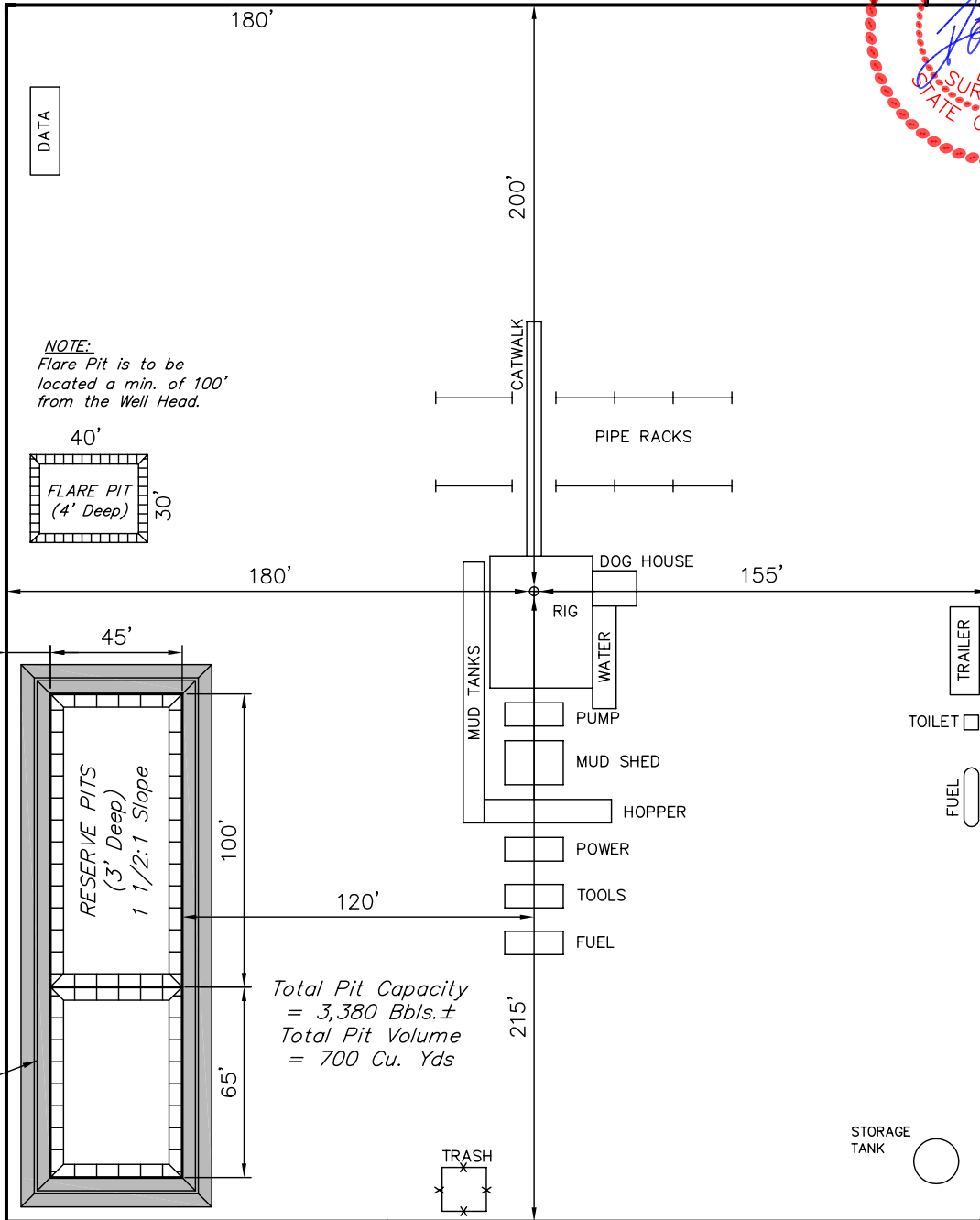
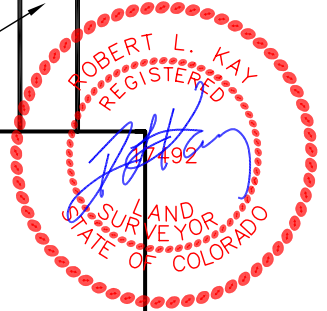
HORSE DITCH #05-10H
SECTION 10, T8N, R59W, 6th. P.M.
501' FSL 501' FEL

FIGURE #3

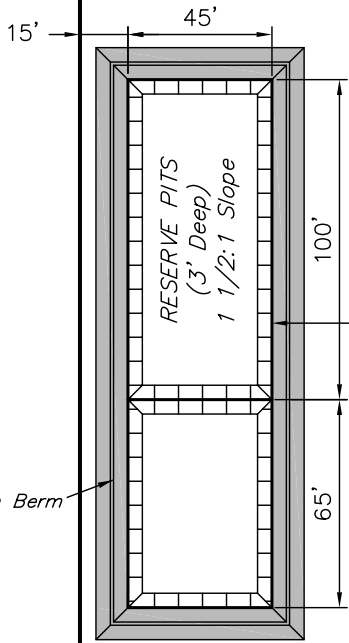
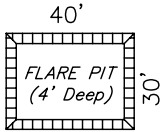
SCALE: 1" = 60'
DATE: 01-11-11
DRAWN BY: J.I.



Proposed Access Road



NOTE:
Flare Pit is to be located a min. of 100' from the Well Head.



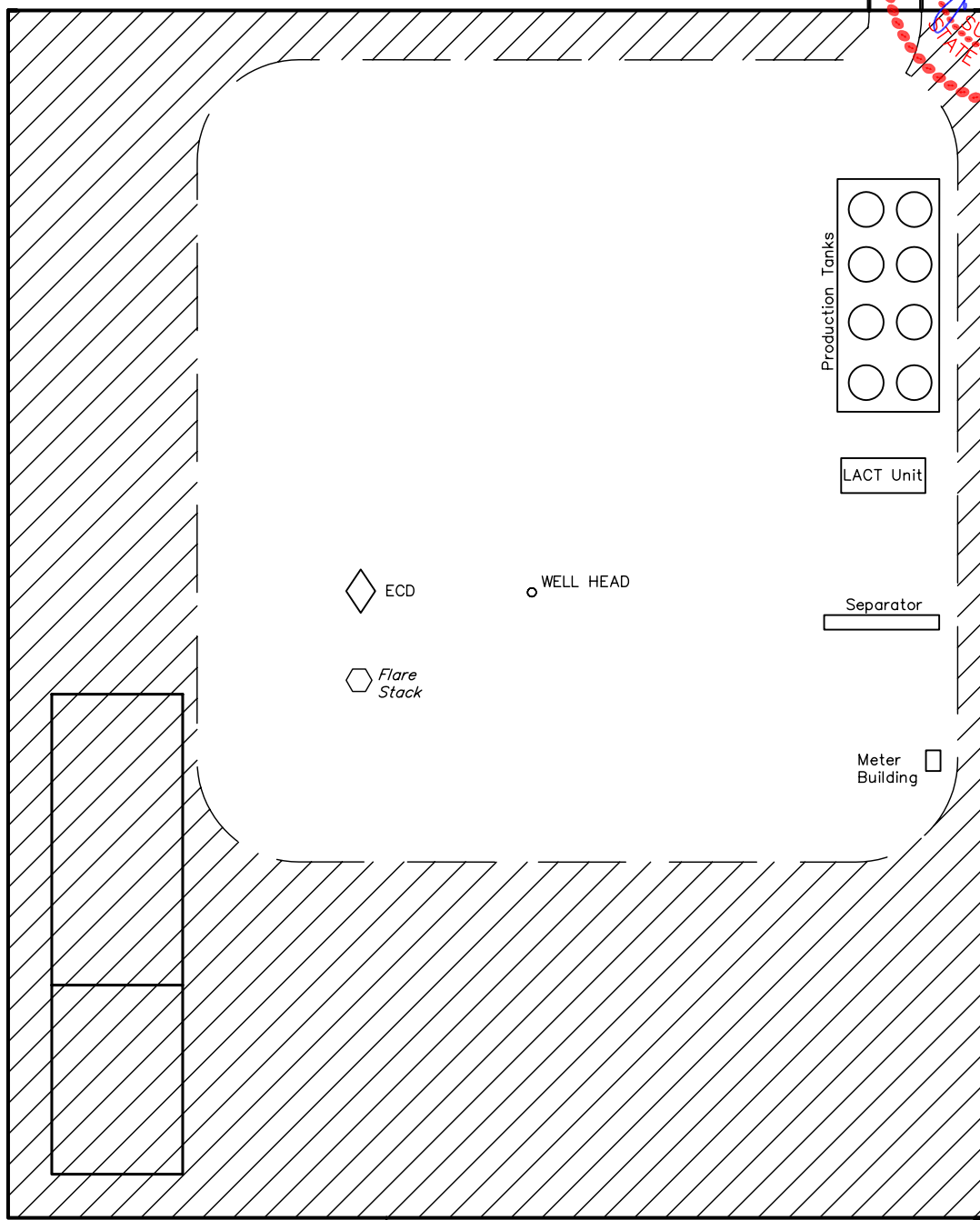
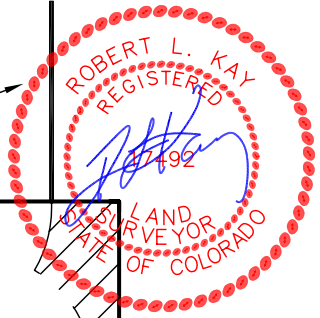
Total Pit Capacity = 3,380 Bbls. ±
Total Pit Volume = 700 Cu. Yds

EOG RESOURCES, INC.
RECLAMATION DIAGRAM FOR
HORSE DITCH #05-10H
SECTION 10, T8N, R59W, 6th. P.M.
501' FSL 501' FEL

FIGURE #4
SCALE: 1" = 60'
DATE: 01-11-11
DRAWN BY: J.I.



Access Road



APPROXIMATE ACREAGES
UN-RECLAIMED = ± 1.639 ACRES

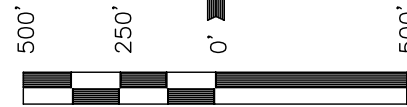
 RECLAIMED AREA

EOG RESOURCES, INC.

LOCATION DRAWING FOR
 HORSE DITCH #05-10H
 SECTION 10, T8N, R59W, 6th. P.M.
 501' FSL 501' FEL

FIGURE #5

NE Cor. Sec. 10
 2010 UELS Alum.
 Cap, 0.5' High,
 N-S Fence
 Lat: 40.683781°
 Long: 103.952639°



SCALE
 DATE: 01-11-11
 DRAWN BY: J.I.

Section Line
 S00°42'24"W - 5199.15' (Meas.)

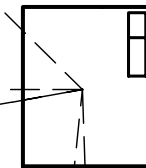
1/4 Section Line

10

1/16 Section Line

SE 1/4

**WADE E.
 CASTOR**



SW Cor. Sec. 10
 Re-Established Using
 Reference Markers
 (Not Set on Ground)
 Point in Cattle Guard
 Lat: 40.669578°
 Long: 103.972006°

WEST - 4816.68'
 (To County Road #115)

S79°54'01"W - 4291.82'
 (To Building)

S79°44'01"W - 4930.49'
 (To Power Line)

N45°20'58"W - 1151.41'
 (To Property Line)

S05°59'29"W
 29.04 Miles
 (To Railroad)

S01°56'18"E
 2240.21'
 (To Water Well)

N89°40'30"W - 5315.84' (Meas.)

Section Line

Proposed
 Access Road

2010 UELS Alum.
 Cap, Flush W/ Ground,
 Fence Corner
 Lat: 40.669514°
 Long: 103.952847°

PLANT COMMUNITY

- DISTURBED GRASSLAND
- NATIVE GRASSLAND
- SHRUB LAND
- PLAINS RIPARIAN
- MOUNTAIN RIPARIAN
- FOREST LAND
- WETLANDS AQUATIC
- ALPINE
- OTHER (Describe): _____

CURRENT LAND USE

- CROP LAND: IRRIGATED DRY LAND IMPROVED PASTURE HAY MEADOW CRP
- NON-CROP LAND: RANGELAND TIMBER RECREATIONAL OTHER (Describe) _____
- SUBDIVIDED: INDUSTRIAL COMMERCIAL RESIDENTIAL _____

FUTURE LAND USE

- CROP LAND: IRRIGATED DRY LAND IMPROVED PASTURE HAY MEADOW CRP
- NON-CROP LAND: RANGELAND TIMBER RECREATIONAL OTHER (Describe) _____
- SUBDIVIDED: INDUSTRIAL COMMERCIAL RESIDENTIAL _____