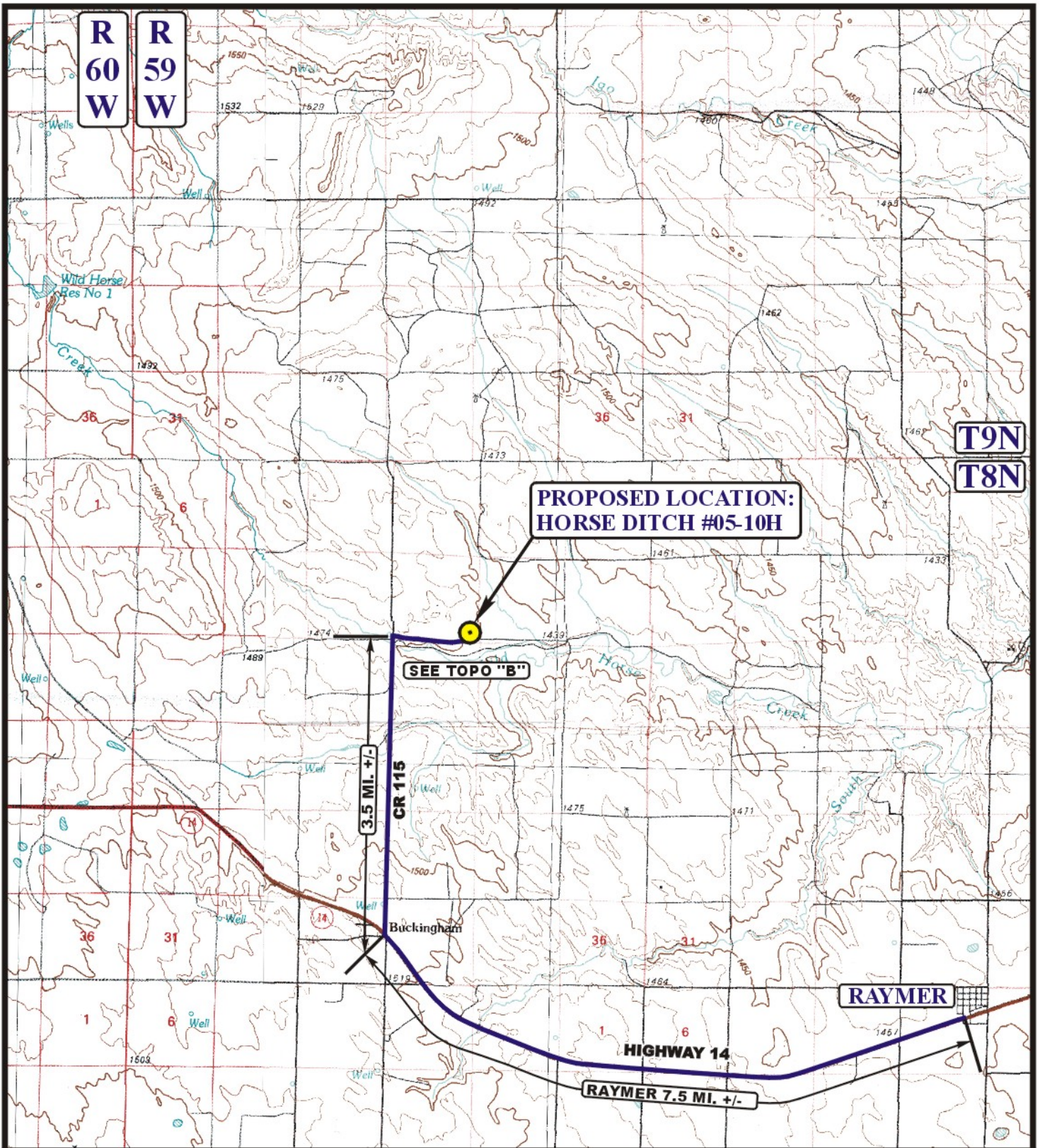


EOG RESOURCES, INC.
HORSE DITCH #05-10H
SECTION 10, T8N, R59W, 6th P.M.

PROCEED IN A SOUTHWESTERLY, THEN NORTHWESTERLY DIRECTION FROM RAYMER, COLORADO ALONG HIGHWAY 14 APPROXIMATELY 7.5 MILES TO THE JUNCTION OF THIS ROAD AND COUNTY ROAD 115 TO THE NORTH; TURN RIGHT AND PROCEED IN A NORTHERLY DIRECTION APPROXIMATELY 3.5 MILES TO THE BEGINNING OF THE PROPOSED ACCESS TO THE EAST; FOLLOW ROAD FLAGS IN AN EASTERLY, THEN NORTHERLY DIRECTION APPROXIMATELY 5,021' TO THE PROPOSED LOCATION.

TOTAL DISTANCE FROM RAYMER, COLORADO TO THE PROPOSED LOCATION IS APPROXIMATELY 12.0 MILES.



LEGEND:

 PROPOSED LOCATION

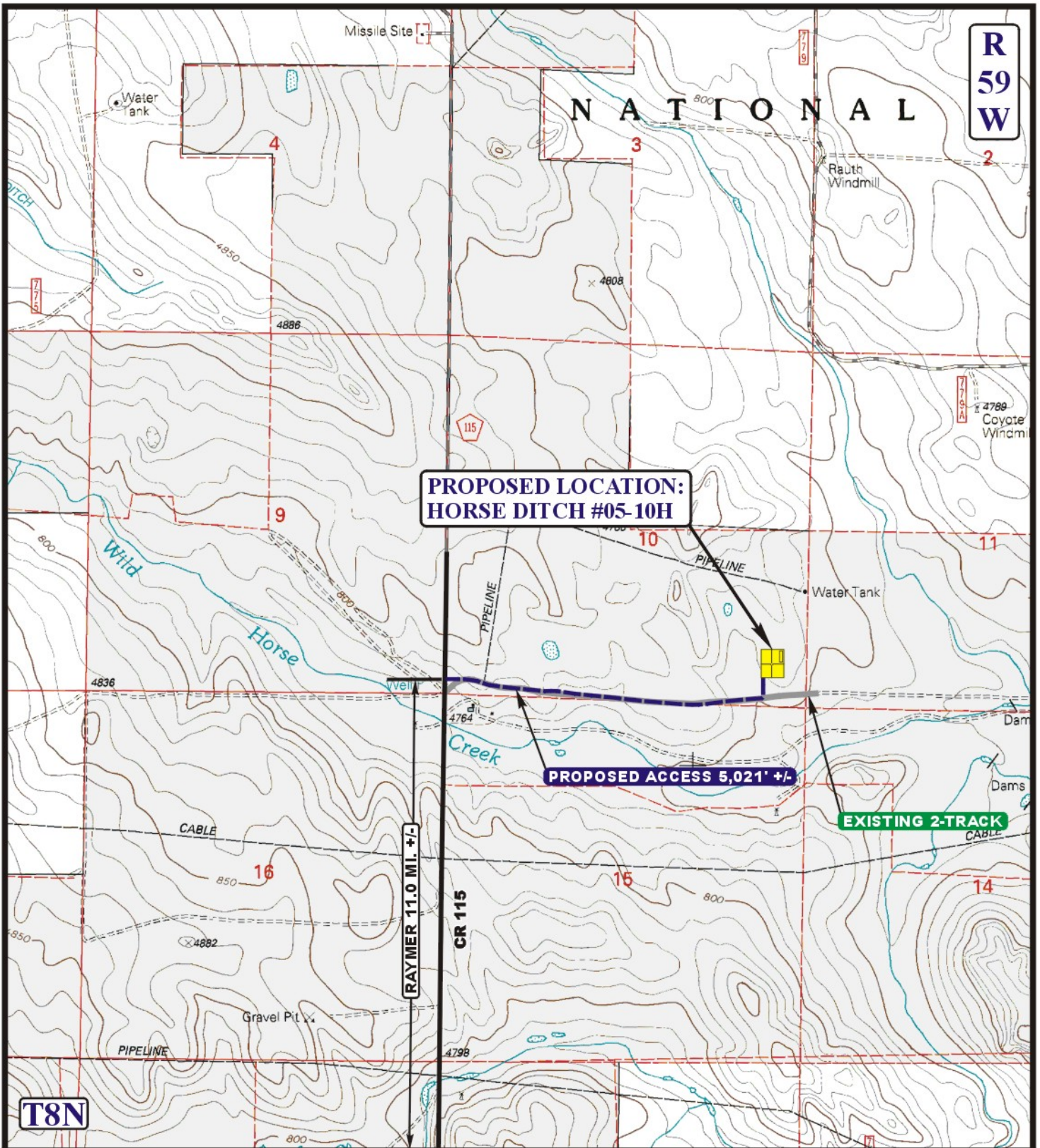


EOG RESOURCES, INC.

HORSE DITCH #05-10H
SECTION 10, T8N, R59W, 6th P.M.
501' FSL 501' FEL

U&L S Utah Engineering & Land Surveying
 85 South 200 East Vernal, Utah 84078
 (435) 789-1017 * FAX (435) 789-1813

ACCESS ROAD MAP	01	21	11	A TOPO
	MONTH	DAY	YEAR	
SCALE: 1:100,000	DRAWN BY: S.F.		REVISED: 00-00-00	



LEGEND:

-  EXISTING ROAD
-  PROPOSED ACCESS ROAD

EOG RESOURCES, INC.

HORSE DITCH #05-10
SECTION 10, T8N, R59W, 6th P.M.
501' FSL 501' FEL

U&L S Uintah Engineering & Land Surveying
 85 South 200 East Vernal, Utah 84078
 (435) 789-1017 * FAX (435) 789-1813



ACCESS ROAD	11	21	11	B
MAP	MONTH	DAY	YEAR	
SCALE: 1" = 2000'	DRAWN BY: S.F.		REVISED: 00-00-00	TOPO