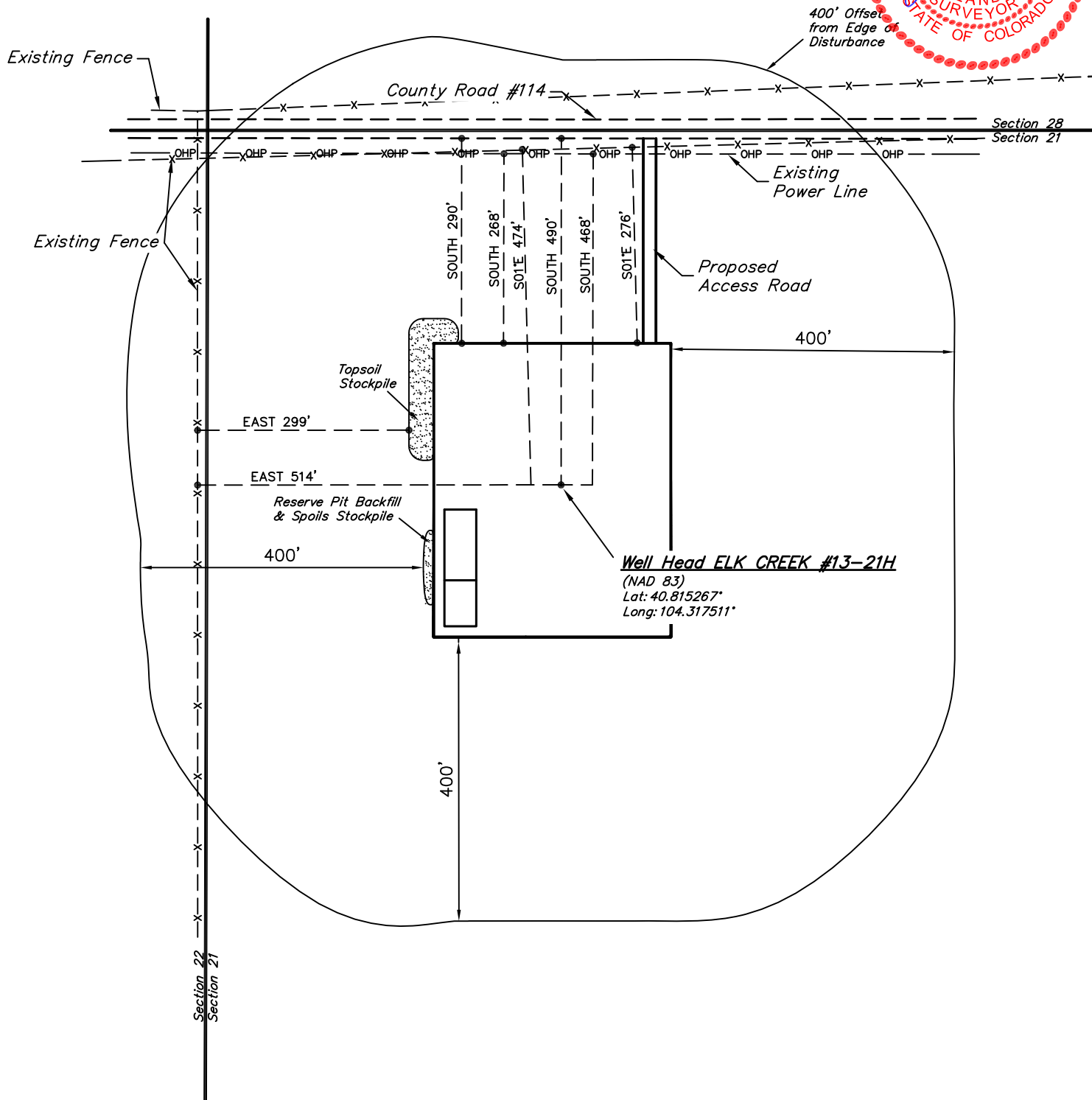




EOG RESOURCES, INC.
ADDENDUM TO LEGAL PLAT FOR
ELK CREEK #13-21H
SECTION 21, T10N, R62W, 6th P.M.
501' FSL 501' FEL

SCALE: 1" = 200'
DATE: 01-12-11
DRAWN BY: K.O.



EOG RESOURCES, INC.

CONSTRUCTION LAYOUT FOR

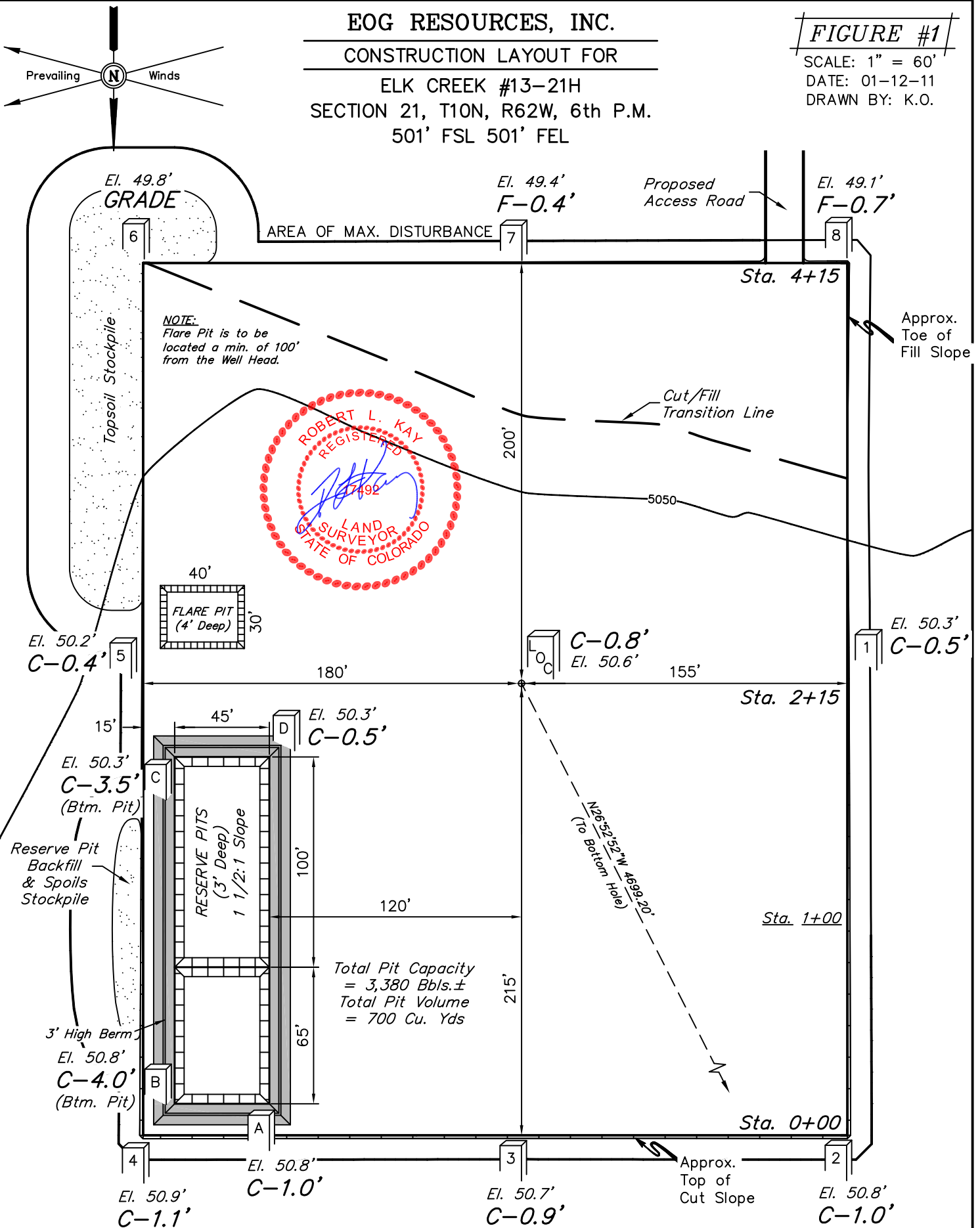
ELK CREEK #13-21H
SECTION 21, T10N, R62W, 6th P.M.
501' FSL 501' FEL

FIGURE #1

SCALE: 1" = 60'

DATE: 01-12-11

DRAWN BY: K.O.



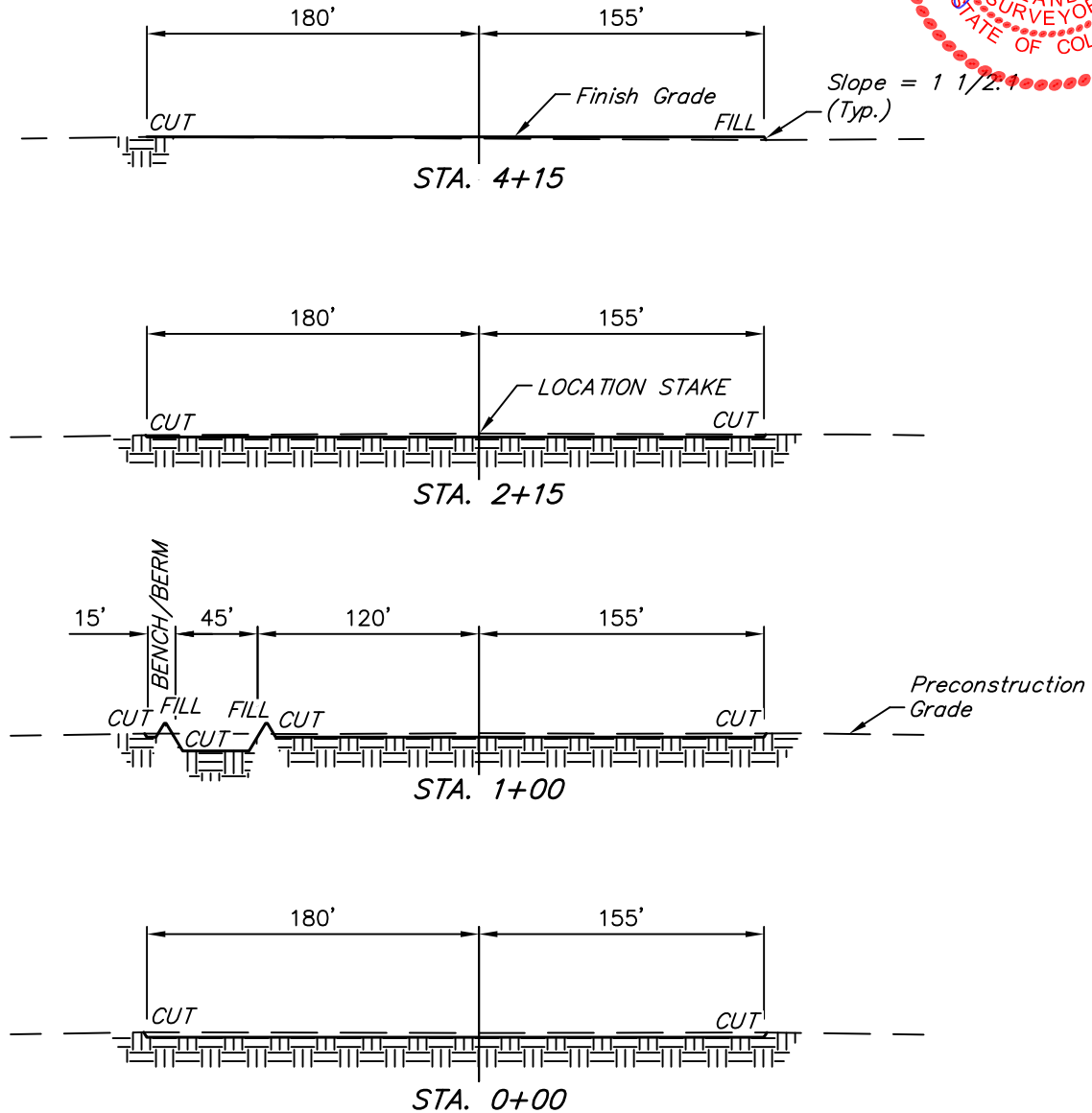
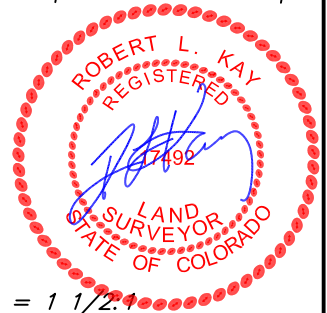
Elev. Ungraded Ground At Loc. Stake = 5050.6'
 FINISHED GRADE ELEV. AT LOC. STAKE = 5049.8'

UINTAH ENGINEERING & LAND SURVEYING
 85 So. 200 East * Vernal, Utah 84078 * (435) 789-1017

1" = 40'
X-Section
Scale
1" = 100'
DATE: 01-12-11
DRAWN BY: K.O.

EOG RESOURCES, INC.
CONSTRUCTION LAYOUT CROSS SECTIONS FOR
ELK CREEK #13-21H
SECTION 21, T10N, R62W, 6th P.M.
501' FSL 501' FEL

FIGURE #2



NOTE:

Topsoil should not be Stripped Below Finished Grade on Substructure Area.

APPROXIMATE ACREAGES

WELL SITE DISTURBANCE = ± 3.931 ACRES
ACCESS ROAD DISTURBANCE = ± 0.196 ACRES
TOTAL = ± 4.127 ACRES

* NOTE:
FILL QUANTITY INCLUDES 5% FOR COMPACTION

APPROXIMATE YARDAGES

(6") Topsoil Stripping = 2,620 Cu. Yds.
Remaining Location = 1,470 Cu. Yds.
TOTAL CUT = 4,090 CU.YDS.
FILL = 1,120 CU.YDS.

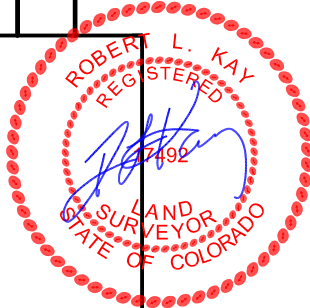
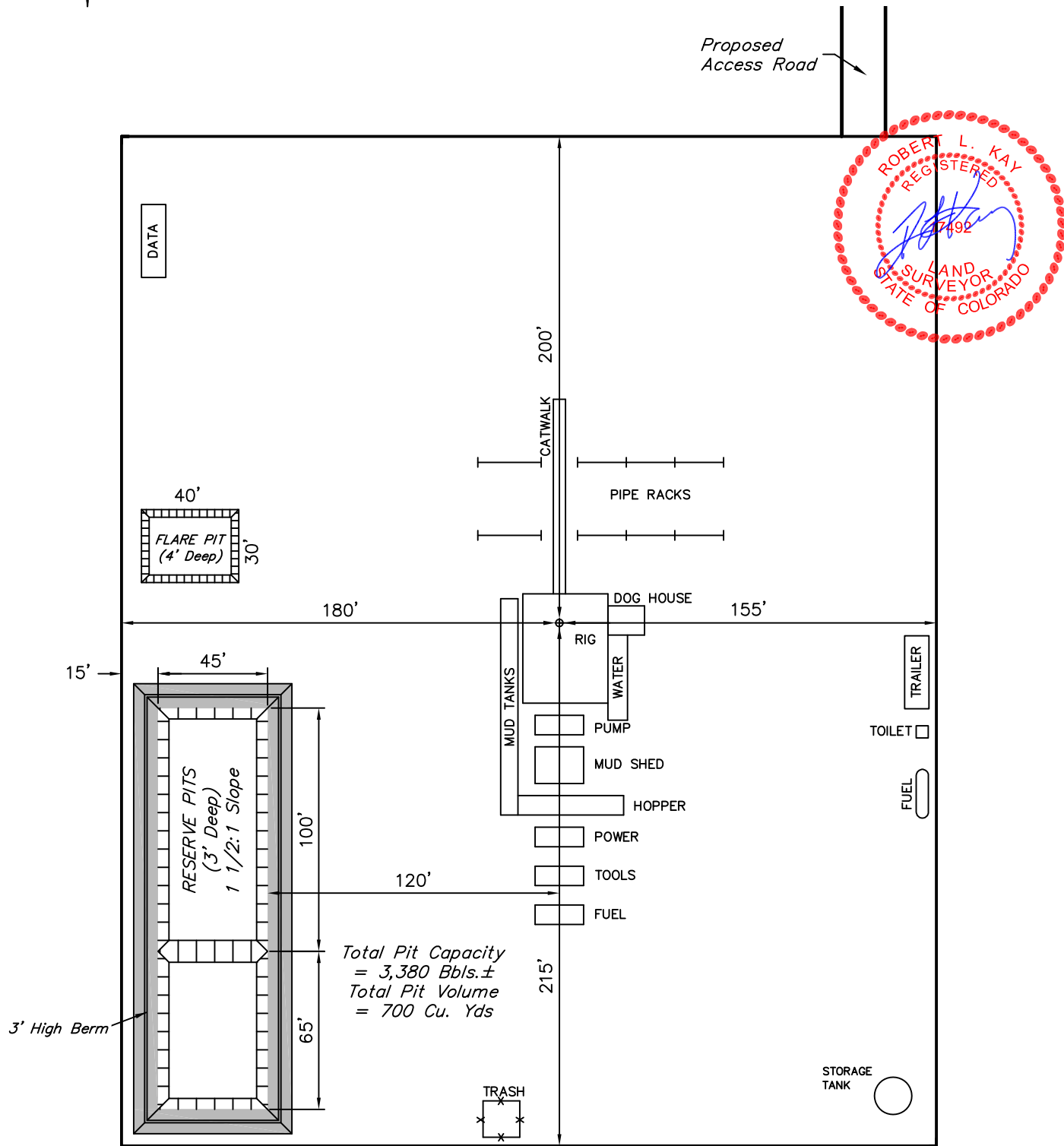
EXCESS MATERIAL = 2,970 Cu. Yds.
Topsoil & Pit Backfill = 2,970 Cu. Yds.
(1/2 Pit Vol.)
EXCESS UNBALANCE = 0 Cu. Yds.
(After Interim Rehabilitation)

UINTAH ENGINEERING & LAND SURVEYING
85 So. 200 East * Vernal, Utah 84078 * (435) 789-1017



EOG RESOURCES, INC.
TYPICAL RIG LAYOUT FOR
ELK CREEK #13-21H
SECTION 21, T10N, R62W, 6th P.M.
501' FSL 501' FEL

FIGURE #3
SCALE: 1" = 60'
DATE: 01-12-11
DRAWN BY: K.O.

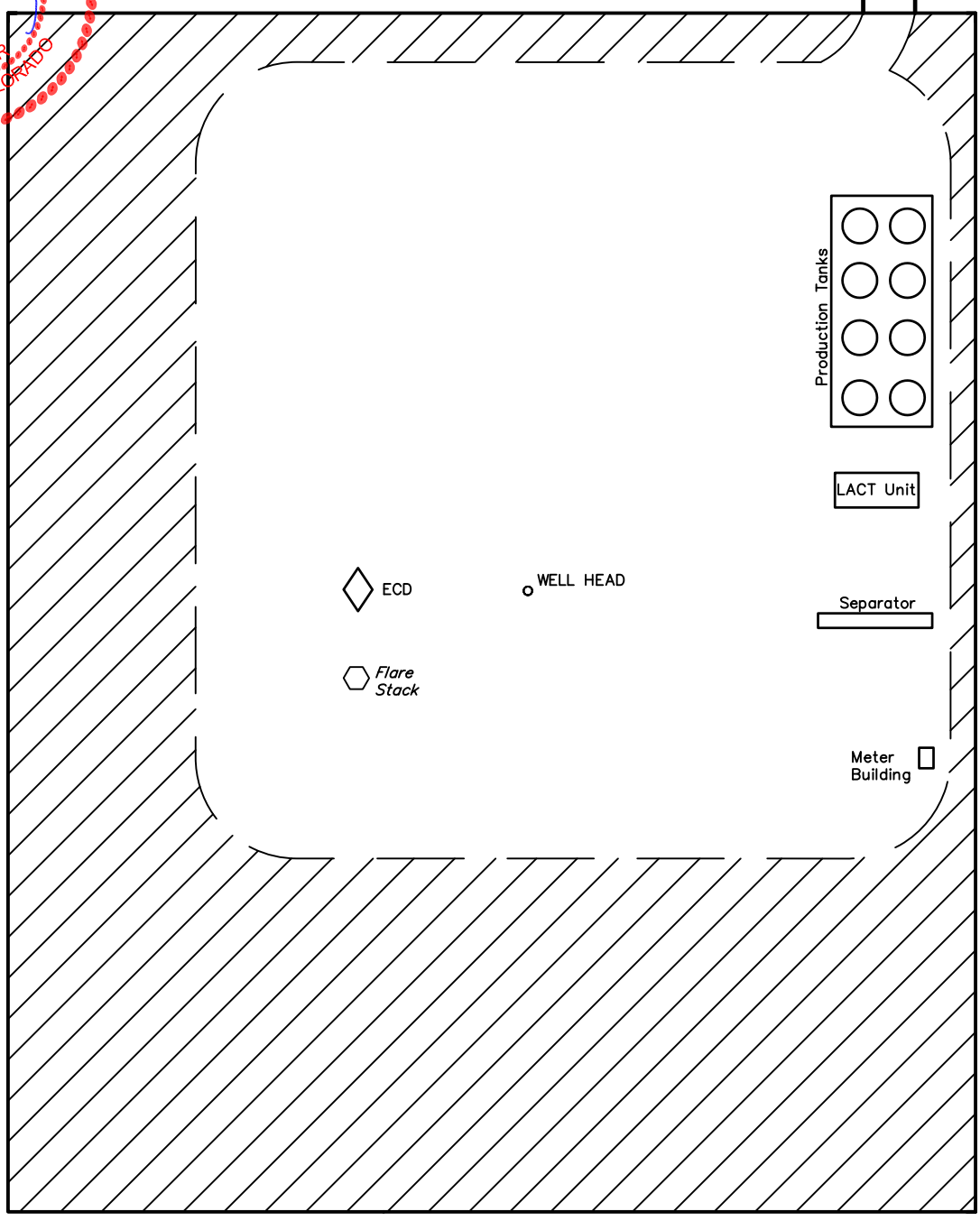


EOG RESOURCES, INC.
RECLAMATION DIAGRAM FOR
ELK CREEK #13-21H
SECTION 21, T10N, R62W, 6th P.M.
501' FSL 501' FEL

FIGURE #4
SCALE: 1" = 60'
DATE: 01-12-11
DRAWN BY: K.O.



Access Road



APPROXIMATE ACREAGES
UN-RECLAIMED = ± 1.553 ACRES

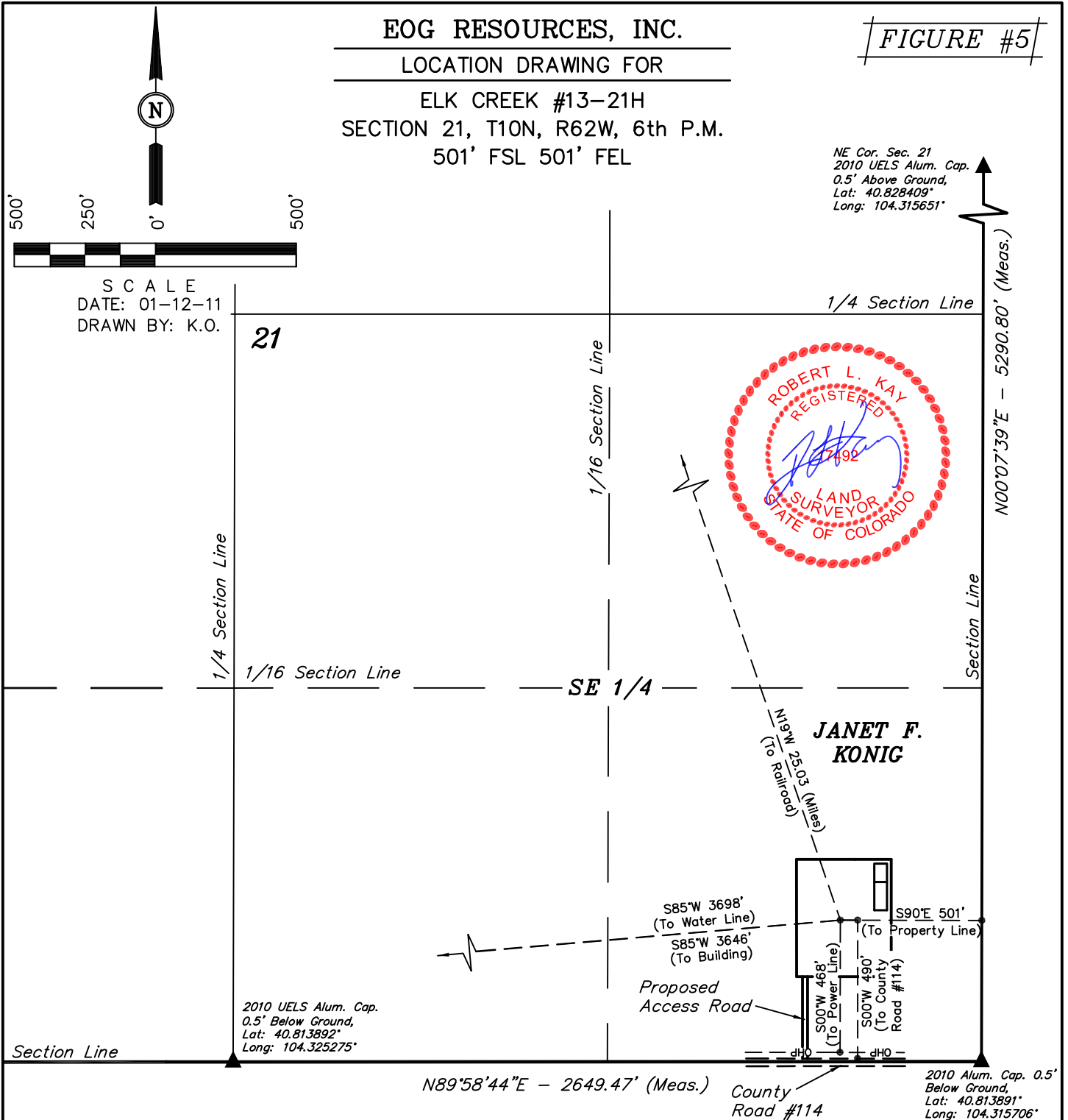
 RECLAIMED AREA

EOG RESOURCES, INC.

LOCATION DRAWING FOR

ELK CREEK #13-21H
SECTION 21, T10N, R62W, 6th P.M.
501' FSL 501' FEL

FIGURE #5



PLANT COMMUNITY

- ☐ DISTURBED GRASSLAND
- ☐ NATIVE GRASSLAND
- ☐ SHRUB LAND
- ☐ PLAINS RIPARIAN
- ☐ MOUNTAIN RIPARIAN
- ☐ FOREST LAND
- ☐ WETLANDS AQUATIC
- ☐ ALPINE
- ☐ OTHER (Describe): _____

CURRENT LAND USE

- CROP LAND: ☐ IRRIGATED ☐ DRY LAND ☐ IMPROVED PASTURE ☐ HAY MEADOW ☐ CRP
- NON-CROP LAND: ☐ RANGELAND ☐ TIMBER ☐ RECREATIONAL ☐ OTHER (Describe) _____
- SUBDIVIDED: ☐ INDUSTRIAL ☐ COMMERCIAL ☐ RESIDENTIAL

FUTURE LAND USE

- CROP LAND: ☐ IRRIGATED ☐ DRY LAND ☐ IMPROVED PASTURE ☐ HAY MEADOW ☐ CRP
- NON-CROP LAND: ☐ RANGELAND ☐ TIMBER ☐ RECREATIONAL ☐ OTHER (Describe) _____
- SUBDIVIDED: ☐ INDUSTRIAL ☐ COMMERCIAL ☐ RESIDENTIAL