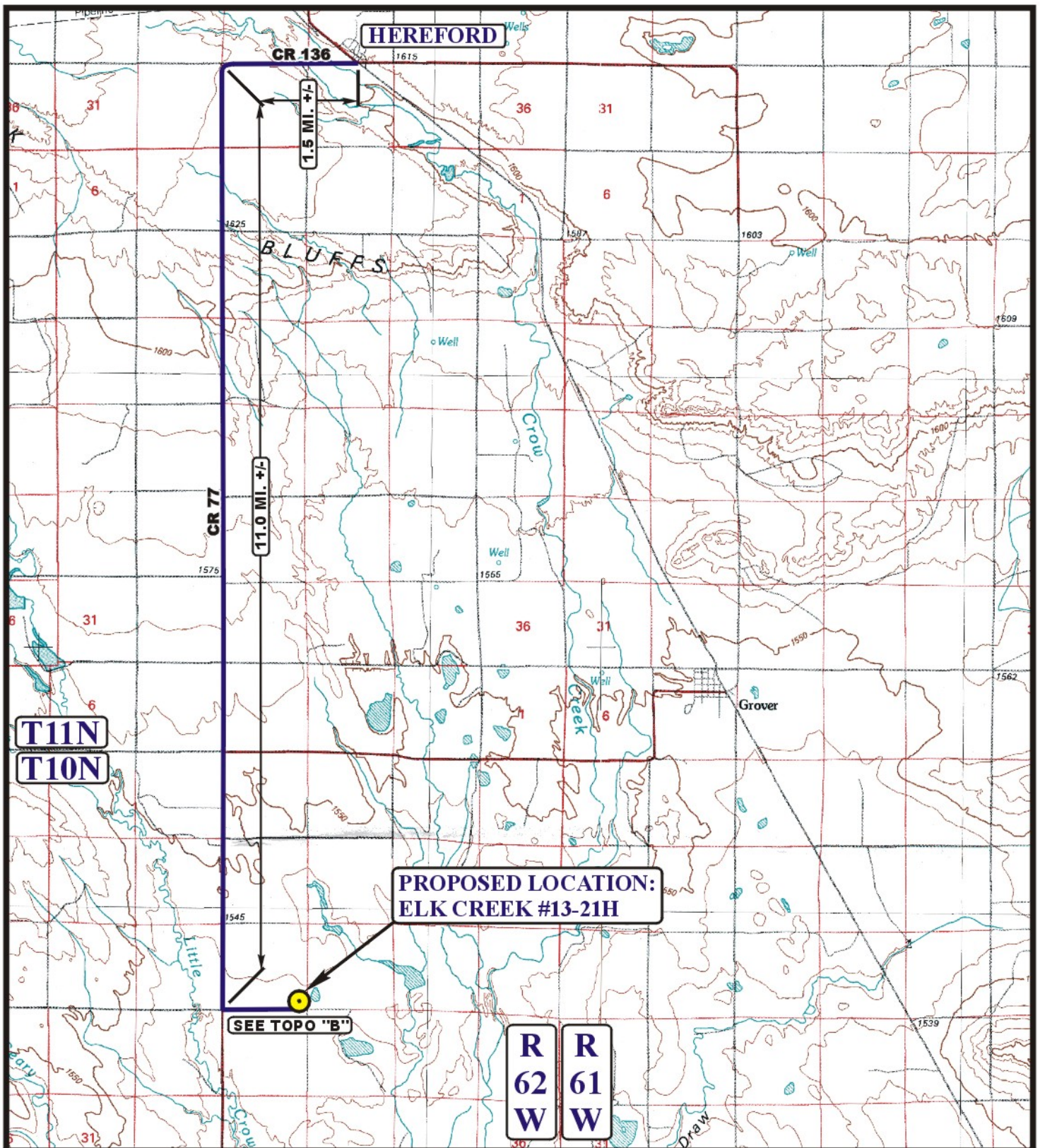


EOG RESOURCES, INC.  
ELK CREEK #13-21H  
SECTION 21, T10N, R62W, 6<sup>th</sup> P.M.

PROCEED IN A WESTERLY DIRECTION FROM HEREFORD, COLORADO ALONG COUNTY ROAD 136 APPROXIMATELY 1.5 MILES TO THE JUNCTION OF THIS ROAD AND COUNTY ROAD 77 TO THE SOUTH; TURN LEFT AND PROCEED IN A SOUTHERLY DIRECTION APPROXIMATELY 11.0 MILES TO THE JUNCTION OF THIS ROAD AND COUNTY ROAD 114 TO THE EAST; TURN LEFT AND PROCEED IN AN EASTERLY DIRECTION APPROXIMATELY 0.9 MILES TO THE BEGINNING OF THE PROPOSED ACCESS TO THE NORTH; FOLLOW ROAD FLAGS IN A NORTHERLY DIRECTION APPROXIMATELY 285' TO THE PROPOSED LOCATION.

TOTAL DISTANCE FROM HEREFORD, COLORADO TO THE PROPOSED WELL LOCATION IS APPROXIMATELY 13.5 MILES.



# LEGEND:

PROPOSED LOCATION



Uintah Engineering & Land Surveying  
 85 South 200 East Vernal, Utah 84078  
 (435) 789-1017 \* FAX (435) 789-1813



# EOG RESOURCES, INC.

ELK CREEK #13-21H  
 SECTION 21, T10N, R62W, 6th P.M.  
 501' FSL 501' FEL

ACCESS ROAD  
 MAP

01 14 11  
 MONTH DAY YEAR

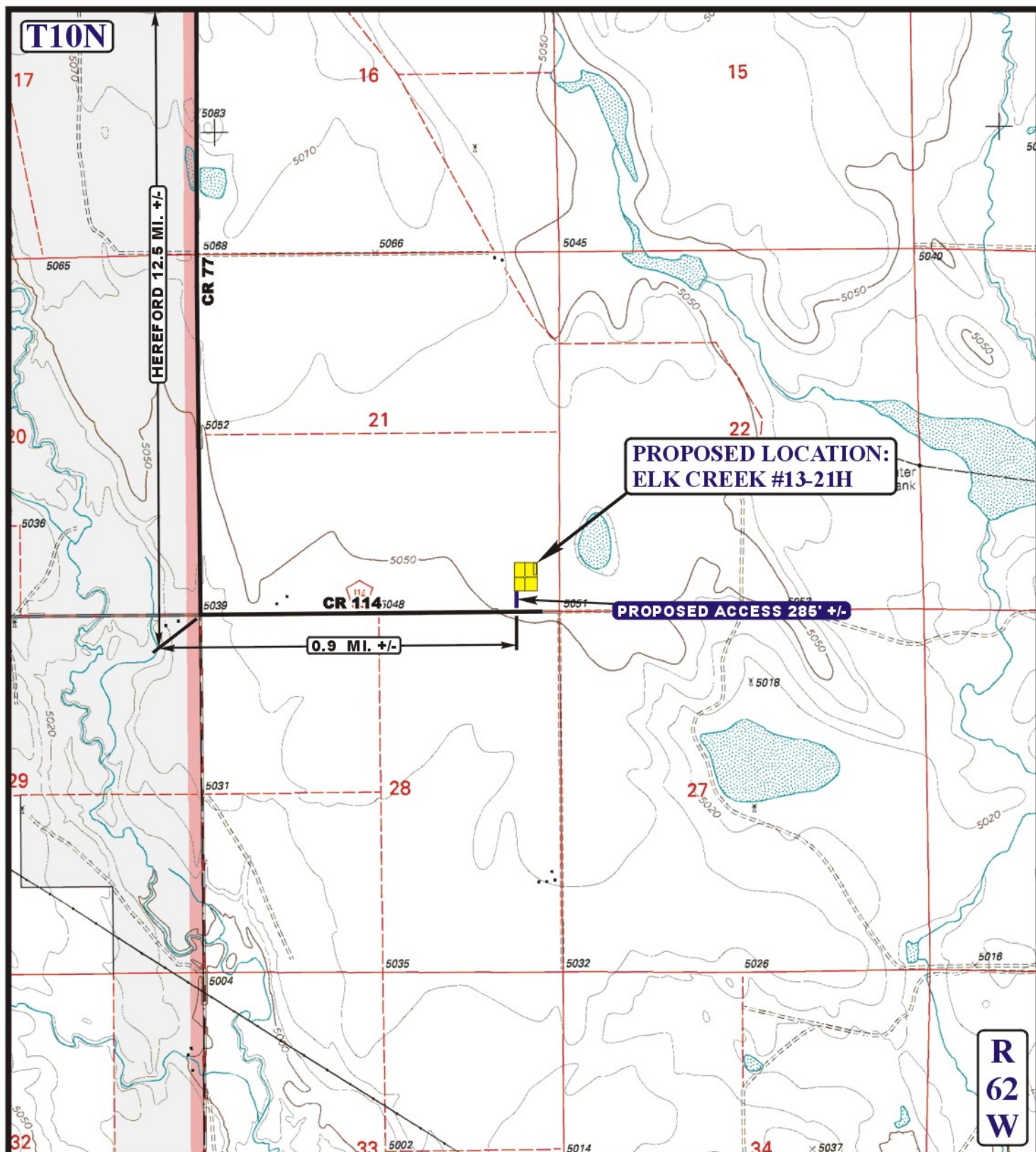
SCALE: 1:100,000

DRAWN BY: J.J.

REVISED: 00-00-00







# **LEGEND:**

— EXISTING ROAD  
 - - - PROPOSED ACCESS ROAD



**EOG RESOURCES, INC.**

**ELK CREEK #13-21H**  
**SECTION 21, T10N, R62W, 6th P.M.**  
**501' FSL 501' FEL**



**Uintah Engineering & Land Surveying**  
 85 South 200 East Vernal, Utah 84078  
 (435) 789-1017 \* FAX (435) 789-1813

**ACCESS ROAD  
MAP**

**01 14 11**  
 MONTH DAY YEAR

**B  
TOPO**

SCALE: 1" = 2000' DRAWN BY: J.J. REVISED: 00-00-00