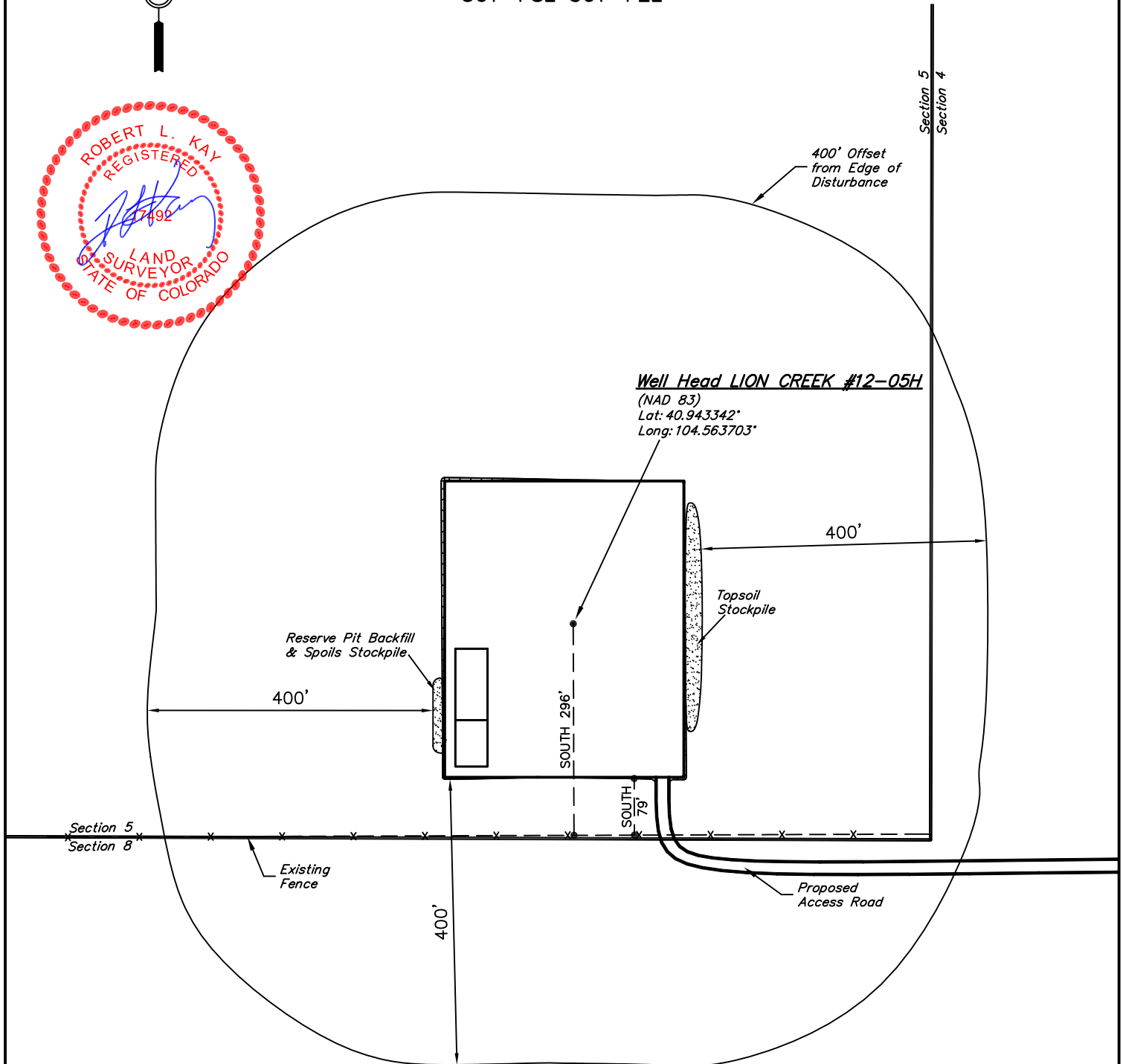


SCALE: 1" = 200'  
DATE: 02-21-11  
DRAWN BY: K.O.



UINTAH ENGINEERING & LAND SURVEYING  
85 So. 200 East \* Vernal, Utah 84078 \* (435) 789-1017

# EOG RESOURCES, INC.

## CONSTRUCTION LAYOUT FOR

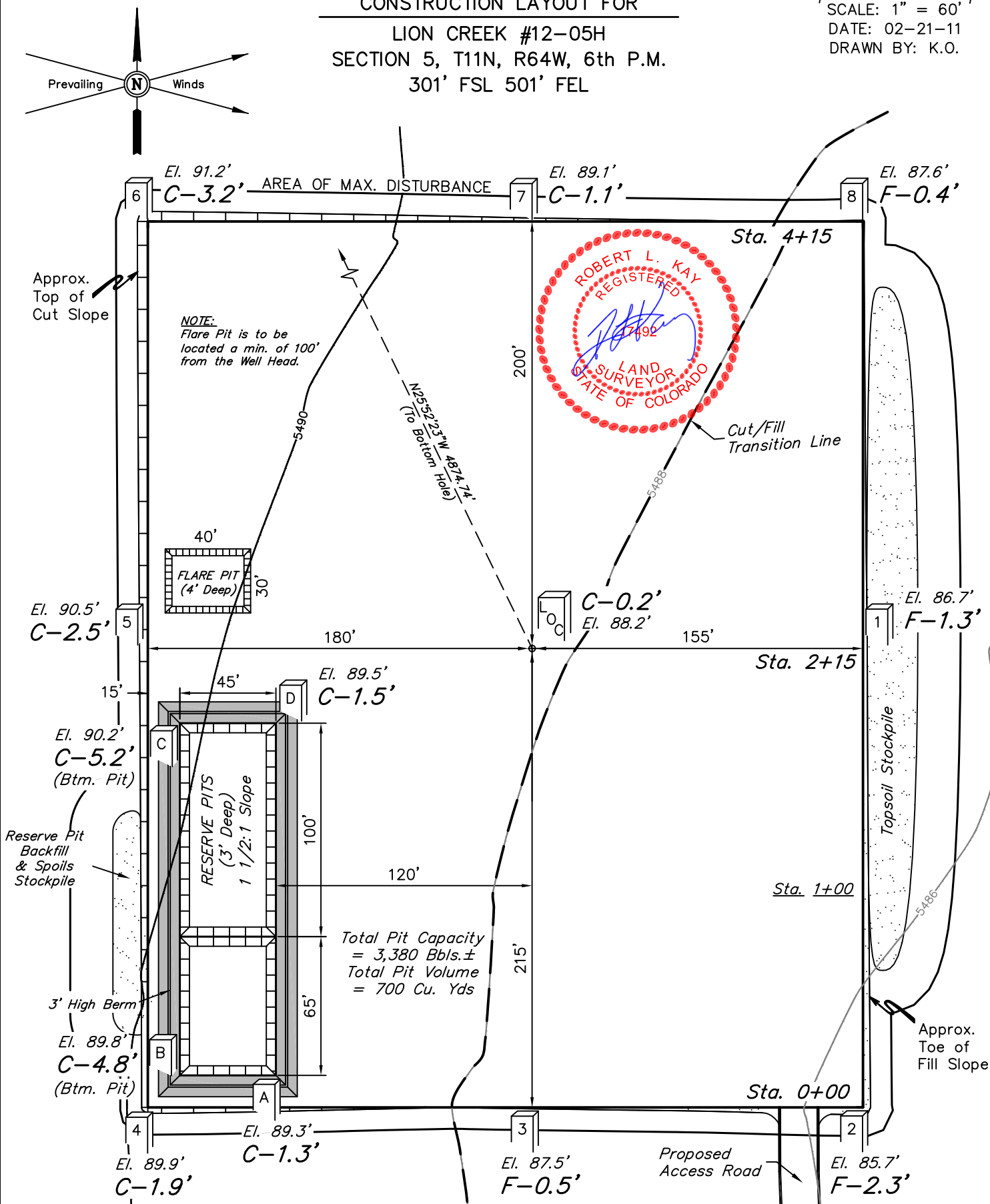
LION CREEK #12-05H  
SECTION 5, T11N, R64W, 6th P.M.  
301' FSL 501' FEL

FIGURE #1

SCALE: 1" = 60'

DATE: 02-21-11

DRAWN BY: K.O.



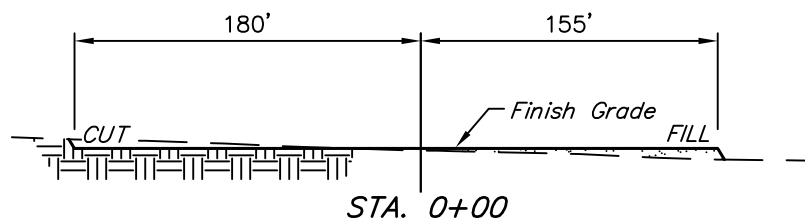
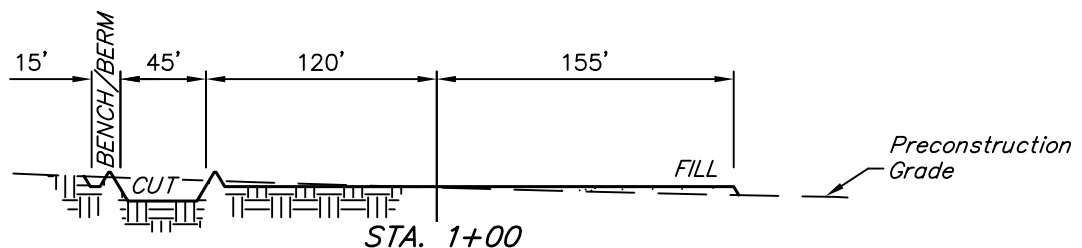
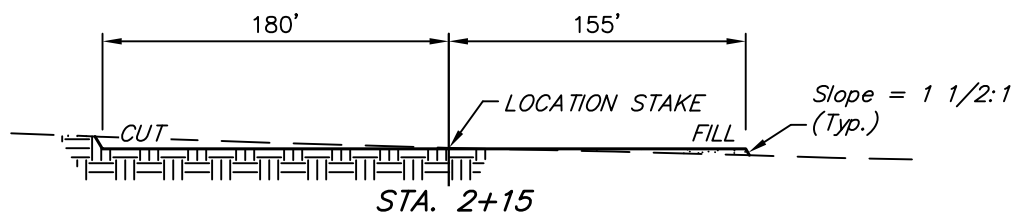
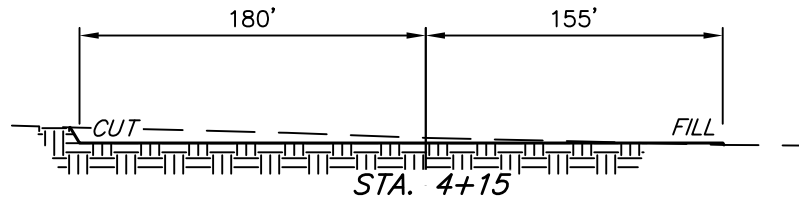
Elev. Ungraded Ground At Loc. Stake = 5488.2'  
FINISHED GRADE ELEV. AT LOC. STAKE = 5488.0'

UINTAH ENGINEERING & LAND SURVEYING  
85 So. 200 East \* Vernal, Utah 84078 \* (435) 789-1017

1" = 40'  
X-Section  
Scale  
1" = 100'  
DATE: 02-21-11  
DRAWN BY: K.O.

EOG RESOURCES, INC.  
CONSTRUCTION LAYOUT CROSS SECTIONS FOR  
LION CREEK #12-05H  
SECTION 5, T11N, R64W, 6th P.M.  
301' FSL 501' FEL

FIGURE #2



NOTE:

Topsoil should not be Stripped Below Finished Grade on Substructure Area.

APPROXIMATE ACREAGES

WELL SITE DISTURBANCE = ± 3.948 ACRES  
ACCESS ROAD DISTURBANCE = ± 3.679 ACRES  
TOTAL = ± 7.627 ACRES

\* NOTE:  
FILL QUANTITY INCLUDES 5% FOR COMPACTION

APPROXIMATE YARDAGES

(6") Topsoil Stripping = 2,680 Cu. Yds.  
Remaining Location = 3,200 Cu. Yds.  
TOTAL CUT = 5,880 CU.YDS.  
FILL = 2,850 CU.YDS.

EXCESS MATERIAL = 3,030 Cu. Yds.  
Topsoil & Pit Backfill (1/2 Pit Vol.) = 3,030 Cu. Yds.  
EXCESS UNBALANCE (After Interim Rehabilitation) = 0 Cu. Yds.

UINTAH ENGINEERING & LAND SURVEYING  
85 So. 200 East \* Vernal, Utah 84078 \* (435) 789-1017

# EOG RESOURCES, INC.

## TYPICAL RIG LAYOUT FOR

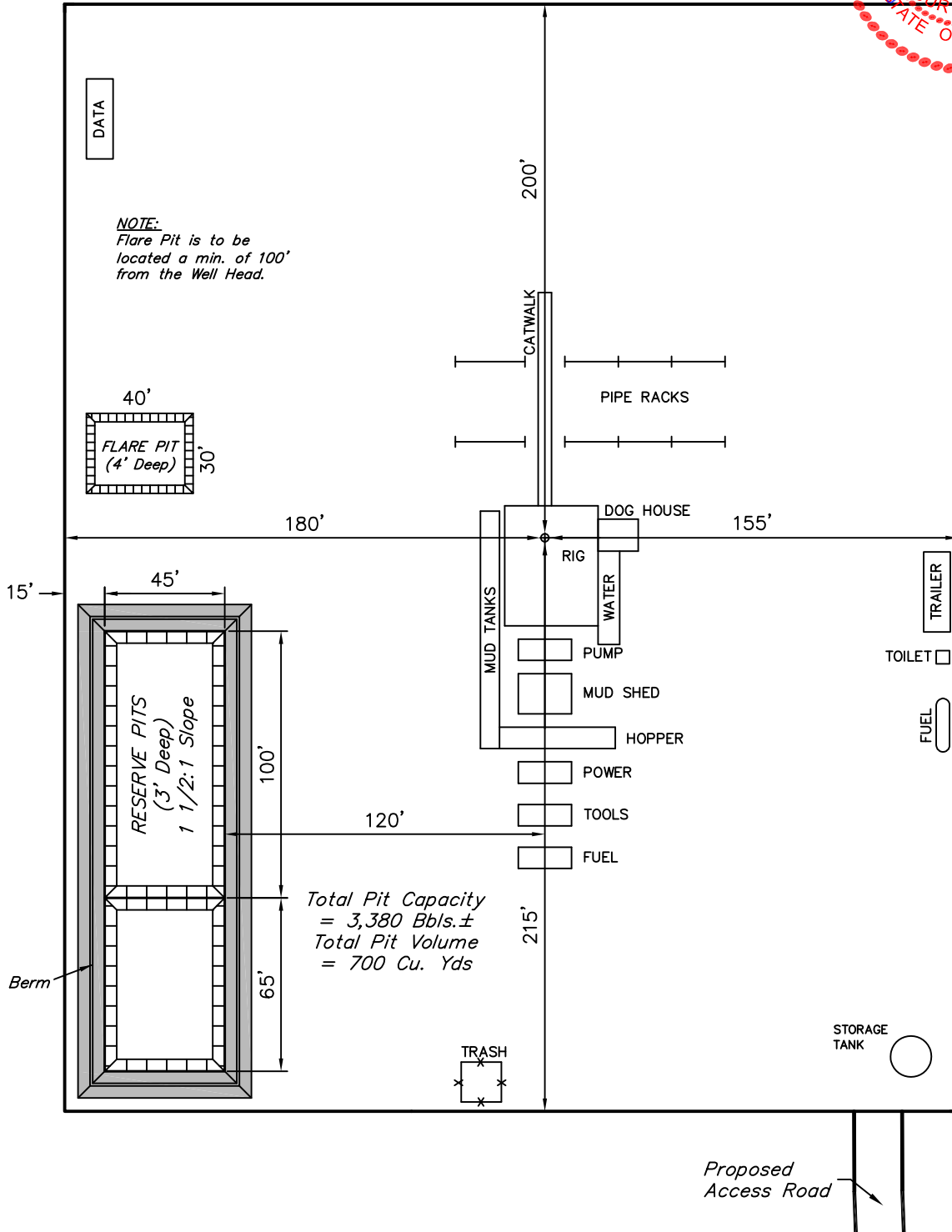
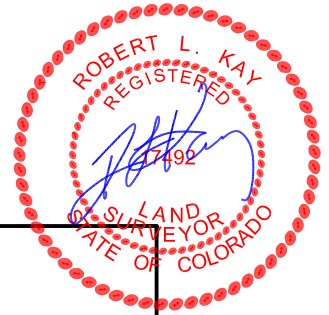
LION CREEK #12-05H  
SECTION 5, T11N, R64W, 6th P.M.  
301' FSL 501' FEL

FIGURE #3

SCALE: 1" = 60'

DATE: 02-21-11

DRAWN BY: K.O.



UINTAH ENGINEERING & LAND SURVEYING

85 So. 200 East \* Vernal, Utah 84078 \* (435) 789-1017

EOG RESOURCES, INC.

RECLAMATION DIAGRAM FOR

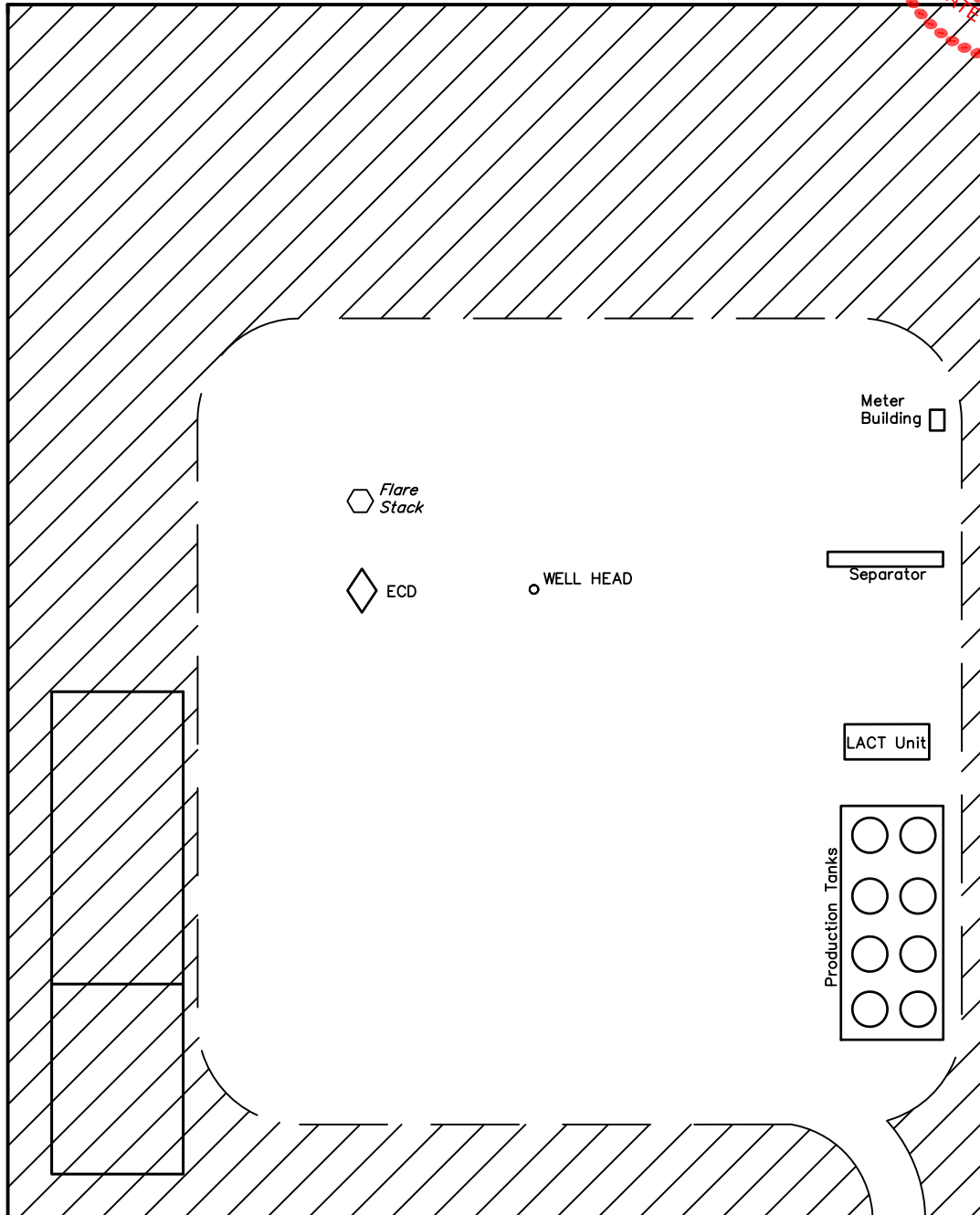
LION CREEK #12-05H  
SECTION 5, T11N, R64W, 6th P.M.  
301' FSL 501' FEL

FIGURE #4

SCALE: 1" = 60'

DATE: 02-21-11

DRAWN BY: K.O.



APPROXIMATE ACREAGES

UN-RECLAIMED =  $\pm 1.545$  ACRES



RECLAIMED AREA

UINTAH ENGINEERING & LAND SURVEYING

85 So. 200 East \* Vernal, Utah 84078 \* (435) 789-1017

# EOG RESOURCES, INC.

## LOCATION DRAWING FOR

LION CREEK #12-05H  
SECTION 5, T11N, R64W, 6th P.M.  
301' FSL 501' FEL

FIGURE #5



5

1/4 Section Line

1920 Brass Cap,  
1.0' Above Ground  
Lat: 40.949872°  
Long: 104.561897°



SCALE  
DATE: 02-22-11  
DRAWN BY: K.O.

1/4 Section Line

1/16 Section Line

Section Line

SE 1/4

1/16 Section Line

COX RANCHES LTD  
LIABILITY CO

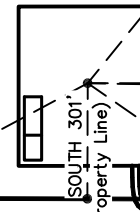
S00°05'01"W - 2681.51' (Meas.)

Section Line

1920 Brass Cap,  
0.9' Above Ground  
Lat: 40.942519°  
Long: 104.571417°

S89°49'53"E - 2632.59' (Meas.)

S62°W 15.60 Miles  
(To Railroad)



EAST 5715'  
(To Water Well)  
S89°E 11037'  
(To County Road #57)

1920 Brass Cap,  
0.6' Above Ground  
Lat: 40.942514°  
Long: 104.561889°

Proposed  
Access Road

S55°E 20707'  
(To Building)

### PLANT COMMUNITY

- ☐ DISTURBED GRASSLAND
- ☐ NATIVE GRASSLAND
- ☐ SHRUB LAND
- ☐ PLAINS RIPARIAN
- ☐ MOUNTAIN RIPARIAN
- ☐ FOREST LAND
- ☐ WETLANDS AQUATIC
- ☐ ALPINE
- ☐ OTHER (Describe): \_\_\_\_\_

### CURRENT LAND USE

- CROP LAND: ☐ IRRIGATED ☐ DRY LAND ☐ IMPROVED PASTURE ☐ HAY MEADOW ☐ CRP
- NON-CROP LAND: ☐ RANGELAND ☐ TIMBER ☐ RECREATIONAL ☐ OTHER (Describe) \_\_\_\_\_
- SUBDIVIDED: ☐ INDUSTRIAL ☐ COMMERCIAL ☐ RESIDENTIAL \_\_\_\_\_

### FUTURE LAND USE

- CROP LAND: ☐ IRRIGATED ☐ DRY LAND ☐ IMPROVED PASTURE ☐ HAY MEADOW ☐ CRP
- NON-CROP LAND: ☐ RANGELAND ☐ TIMBER ☐ RECREATIONAL ☐ OTHER (Describe) \_\_\_\_\_
- SUBDIVIDED: ☐ INDUSTRIAL ☐ COMMERCIAL ☐ RESIDENTIAL \_\_\_\_\_

UINTAH ENGINEERING & LAND SURVEYING  
85 So. 200 East \* Vernal, Utah 84078 \* (435) 789-1017