

T11N, R64W, 6th P.M.

EOG RESOURCES, INC.

2011 Alum. Cap,  
0.7' Above Ground  
Lat: 40.956875°  
Long: 104.581111°

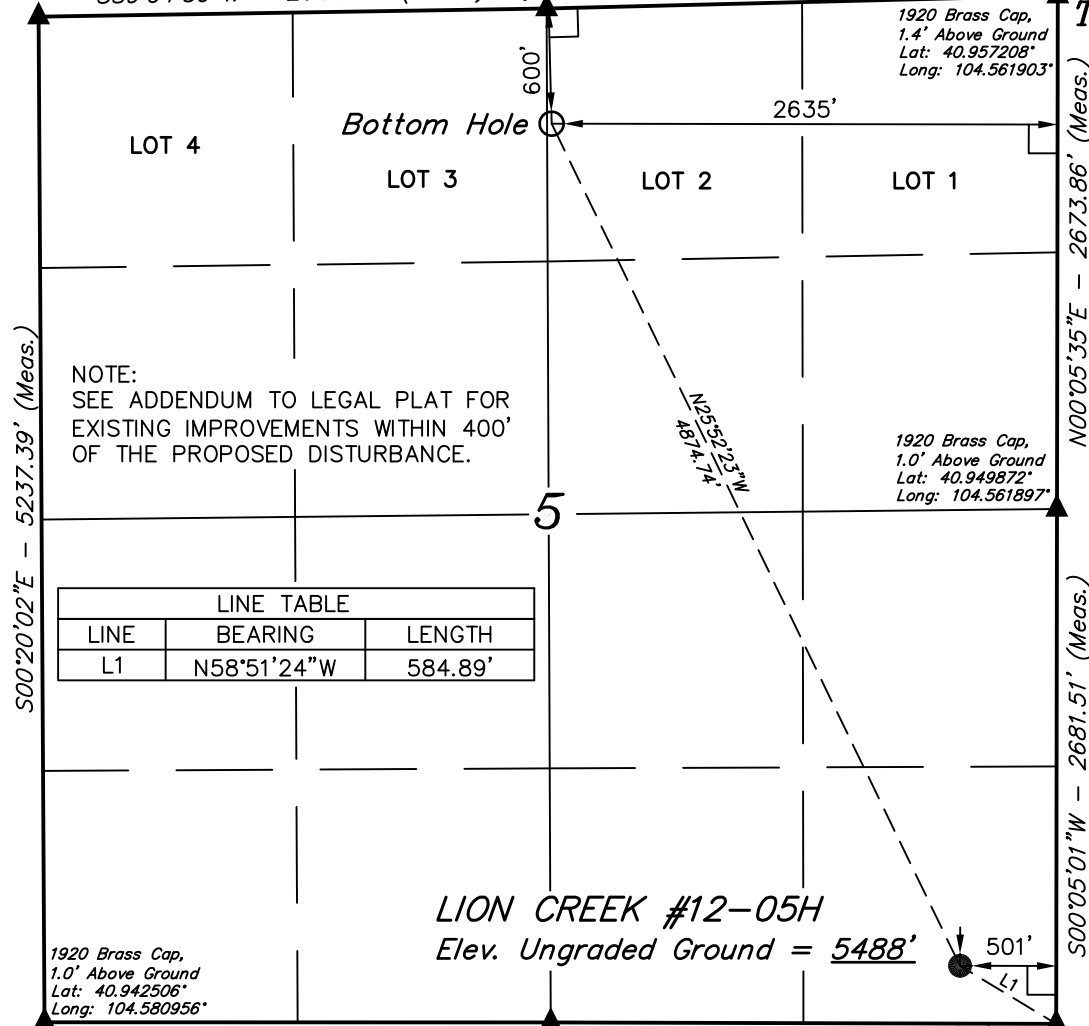
1920 Brass Cap,  
1.0' Above Ground  
Lat: 40.957008°  
Long: 104.571539°

S89°04'59"W - 2645.62' (Meas.) Long: 104.571539° S88°33'12"W - 2663.42' (Meas.)

T12N  
T11N

1920 Brass Cap,  
1.4' Above Ground  
Lat: 40.957208°  
Long: 104.561903°

1920 Brass Cap,  
1.0' Above Ground  
Lat: 40.949872°  
Long: 104.561897°



NOTE:  
SEE ADDENDUM TO LEGAL PLAT FOR  
EXISTING IMPROVEMENTS WITHIN 400'  
OF THE PROPOSED DISTURBANCE.

LINE TABLE		
LINE	BEARING	LENGTH
L1	N58°51'24"W	584.89'

LION CREEK #12-05H  
Elev. Ungraded Ground = 5488'

1920 Brass Cap,  
1.0' Above Ground  
Lat: 40.942506°  
Long: 104.580956°

S89°59'02"E - 2636.50' (Meas.)

S89°49'53"E - 2632.59' (Meas.)

1920 Brass Cap,  
0.9' Above Ground  
Lat: 40.942519°  
Long: 104.571417°

1920 Brass Cap,  
0.6' Above Ground  
Lat: 40.942514°  
Long: 104.561889°

PDOP=1.8

# LEGEND:

- └─┘ = 90° SYMBOL
- = PROPOSED WELL HEAD.
- ▲ = SECTION CORNERS LOCATED.

NAD 83 (TARGET BOTTOM HOLE)	NAD 83 (SURFACE LOCATION)
LATITUDE = 40°57'19.41" (40.955392)	LATITUDE = 40°56'36.03" (40.943342)
LONGITUDE = 104°34'17.16" (104.571433)	LONGITUDE = 104°33'49.33" (104.563703)
NAD 27 (TARGET BOTTOM HOLE)	NAD 27 (SURFACE LOCATION)
LATITUDE = 40°57'19.47" (40.955408)	LATITUDE = 40°56'36.09" (40.943358)
LONGITUDE = 104°34'15.30" (104.570917)	LONGITUDE = 104°33'47.47" (104.563186)
STATE PLANE NAD 83	STATE PLANE NAD 83
N: 1592246.02 E: 3256491.58	N: 1587878.51 E: 3258673.29
STATE PLANE NAD 27	STATE PLANE NAD 27
N: 592243.71 E: 2256641.31	N: 587876.31 E: 2258823.00

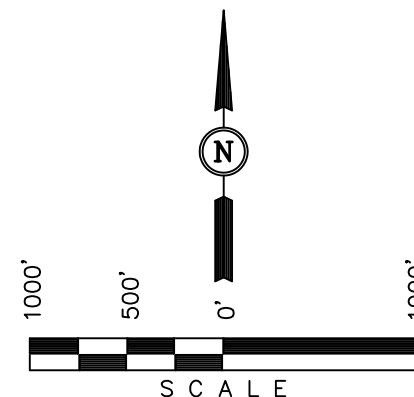
Well location, LION CREEK #12-05H, located as shown in the SE 1/4 SE 1/4 of Section 5, T11N, R64W, 6th P.M., Weld County, Colorado.

## BASIS OF ELEVATION

SPOT ELEVATION LOCATED AT THE NORTHEAST CORNER OF SECTION 1, T11N, R63W, 6th P.M. TAKEN FROM THE HERFORD, QUADRANGLE, COLORADO, WELD COUNTY, 7.5 MINUTE QUAD (TOPOGRAPHIC MAP) PUBLISHED BY THE UNITED STATES DEPARTMENT OF THE INTERIOR, GEOLOGICAL SURVEY. SAID ELEVATION IS MARKED AS BEING 5352 FEET.

## BASIS OF BEARINGS

BASIS OF BEARINGS IS A G.P.S. OBSERVATION.



## CERTIFICATE

THIS IS TO CERTIFY THAT THE ABOVE PLAT WAS PREPARED FROM FIELD NOTES OF ACTUAL SURVEYS MADE BY ME OR UNDER MY SUPERVISION AND THAT THE SAME ARE TRUE AND CORRECT TO THE BEST OF MY KNOWLEDGE AND BELIEF.

REGISTERED LAND SURVEYOR  
REGISTRATION NO. 17492  
STATE OF COLORADO

UINTAH ENGINEERING & LAND SURVEYING  
85 SOUTH 200 EAST - VERNAL, UTAH 84078  
(435) 789-1017

SCALE 1" = 1000'	DATE SURVEYED: 02-15-11	DATE DRAWN: 02-21-11
PARTY G.M. J.R. K.O.	REFERENCES G.L.O. PLAT	
WEATHER COLD	FILE EOG RESOURCES, INC.	