

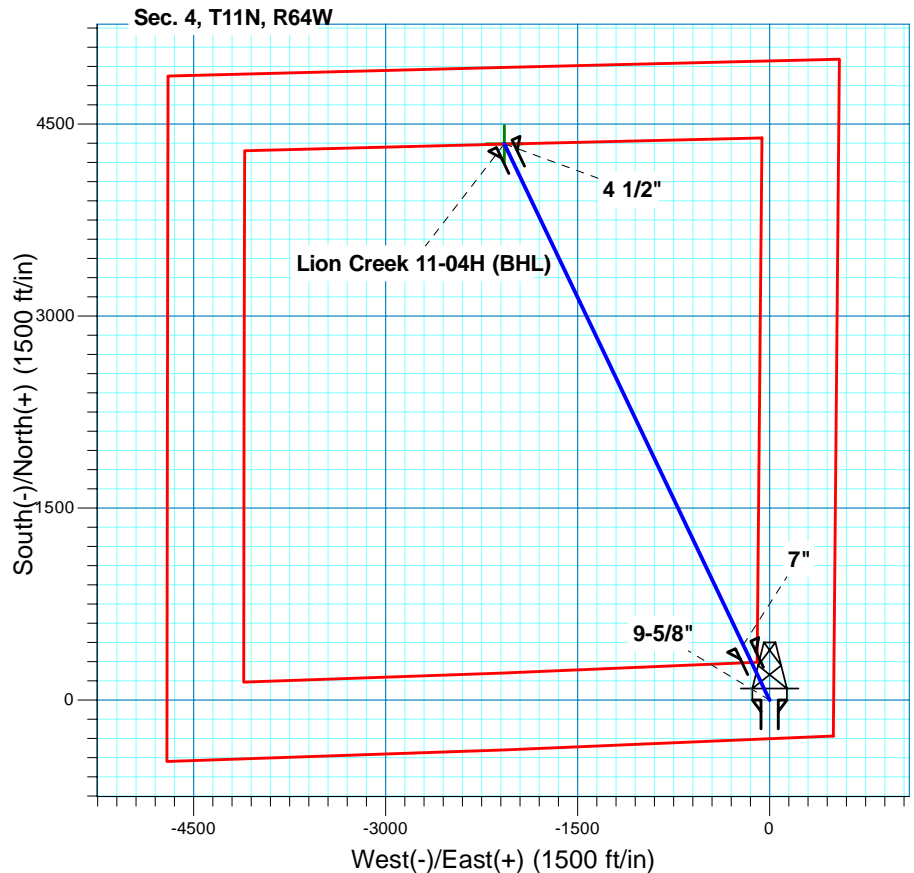
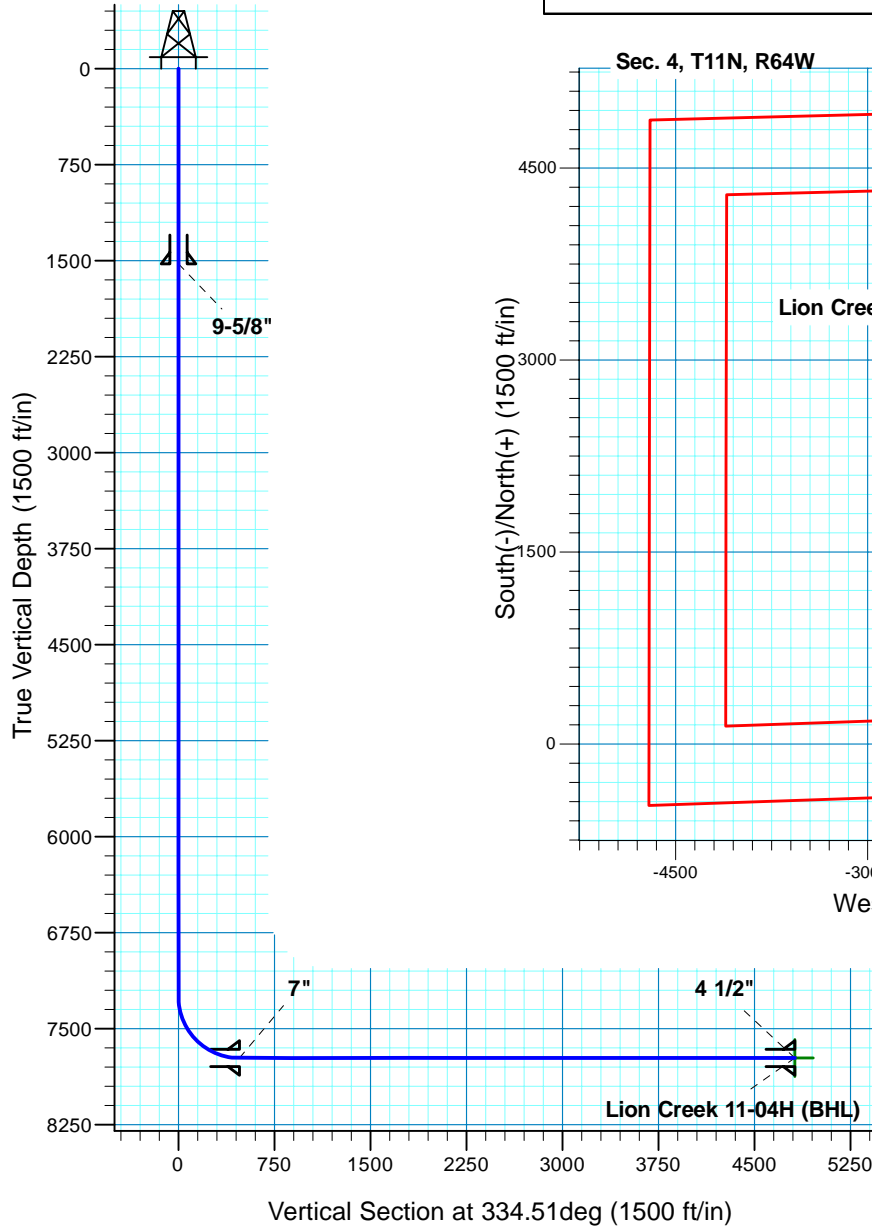
Lion Creek 11-04H

Section 4 T11N R64W

Weld County, CO

Surface Location

NAD 1927 (NADCON CONUS) Colorado North 501
 Ground Elevation: 5448.00 RIG @ 5470.00ft (TBD)
 Northing Easting Latitude Longitude
 588120.72 2264027.17 40° 56' 37.961 N 104° 32' 39.631 W



T M
 Azimuths to True North
 Magnetic North: 8.78°
 Magnetic Field
 Strength: 53481.5nT
 Dip Angle: 67.54°
 Date: 3/9/2011
 Model: IGRF200510

Project: DJ - Hereford Ranch
 Site: Lion Creek 11-04H
 Well: Lion Creek 11-04H
 Plan: APD Directional Plan

SECTION DETAILS

Sec	MD	Inc	Azi	TVD	+N/-S	+E/-W	DLeg	TFace	VSec	Target
1	0.00	0.00	0.00	0.00	0.00	0.00	0.00	0.00	0.00	
2	7252.53	0.00	0.00	7252.53	0.00	0.00	0.00	0.00	0.00	
3	8002.54	90.00	334.51	7730.00	431.00	-205.46	12.00	334.51	477.47	
4	12339.70	90.00	334.51	7730.00	4346.08	-2071.76	0.00	0.00	4814.63	Lion Creek 11-04H (BHL)

TARGET DETAILS

Name	TVD	+N/-S	+E/-W	Northing	Easting	Latitude	Longitude	Shape
Lion Creek 11-04H (BHL)	7730.00	4346.08	-2071.76	592444.22	2261908.70	40° 57' 20.902 N	104° 33' 6.631 W	Point

Denver Division- Colorado

DJ - Hereford Ranch

Lion Creek 11-04H

Lion Creek 11-04H

Original Wellbore

Plan: APD Directional Plan

Standard Planning Report

09 March, 2011

EOG Resources Inc

Planning Report

Database:	EDM	Local Co-ordinate Reference:	Site Lion Creek 11-04H
Company:	Denver Division- Colorado	TVD Reference:	RIG @ 5470.00ft (TBD)
Project:	DJ - Hereford Ranch	MD Reference:	RIG @ 5470.00ft (TBD)
Site:	Lion Creek 11-04H	North Reference:	True
Well:	Lion Creek 11-04H	Survey Calculation Method:	Minimum Curvature
Wellbore:	Original Wellbore		
Design:	APD Directional Plan		

Project	DJ - Hereford Ranch, Weld County		
Map System:	US State Plane 1927 (Exact solution)	System Datum:	Mean Sea Level
Geo Datum:	NAD 1927 (NADCON CONUS)		
Map Zone:	Colorado North 501		

Site		Lion Creek 11-04H				
Site Position:		Northing:	588,120.72 ft	Latitude:	40° 56' 37.961 N	
From:	Lat/Long	Easting:	2,264,027.17 ft	Longitude:	104° 32' 39.631 W	
Position Uncertainty:		0.00 ft	Slot Radius:	"	Grid Convergence:	0.62 deg

Well	Lion Creek 11-04H					
Well Position	+N/-S	0.00 ft	Northing:	588,120.72 ft	Latitude:	40° 56' 37.961 N
	+E/-W	0.00 ft	Easting:	2,264,027.17 ft	Longitude:	104° 32' 39.631 W
Position Uncertainty		0.00 ft	Wellhead Elevation:	ft	Ground Level:	5,448.00 ft

Wellbore	Original Wellbore				
Magnetics	Model Name	Sample Date	Declination (deg)	Dip Angle (deg)	Field Strength (nT)
	IGRF200510	3/9/2011	8.78	67.54	53,481

Design	APD Directional Plan			
Audit Notes:				
Version:	Phase:	PROTOTYPE	Tie On Depth:	0.00
Vertical Section:	Depth From (TVD) (ft)	+N/-S (ft)	+E/-W (ft)	Direction (deg)
	0.00	0.00	0.00	334.51

Plan Sections										
Measured Depth (ft)	Inclination (deg)	Azimuth (deg)	Vertical Depth (ft)	+N/-S (ft)	+E/-W (ft)	Dogleg Rate (?/100ft)	Build Rate (?/100ft)	Turn Rate (?/100ft)	TFO (deg)	Target
0.00	0.00	0.00	0.00	0.00	0.00	0.00	0.00	0.00	0.00	
7,252.53	0.00	0.00	7,252.53	0.00	0.00	0.00	0.00	0.00	0.00	
8,002.54	90.00	334.51	7,730.00	431.00	-205.46	12.00	12.00	0.00	334.51	
12,339.70	90.00	334.51	7,730.00	4,346.08	-2,071.76	0.00	0.00	0.00	0.00	Lion Creek 11-04H

EOG Resources Inc

Planning Report

Database:	EDM	Local Co-ordinate Reference:	Site Lion Creek 11-04H
Company:	Denver Division- Colorado	TVD Reference:	RIG @ 5470.00ft (TBD)
Project:	DJ - Hereford Ranch	MD Reference:	RIG @ 5470.00ft (TBD)
Site:	Lion Creek 11-04H	North Reference:	True
Well:	Lion Creek 11-04H	Survey Calculation Method:	Minimum Curvature
Wellbore:	Original Wellbore		
Design:	APD Directional Plan		

Planned Survey

Measured Depth (ft)	Inclination (deg)	Azimuth (deg)	Vertical Depth (ft)	+N/-S (ft)	+E/-W (ft)	Vertical Section (ft)	Dogleg Rate (?/100ft)	Build Rate (?/100ft)	Turn Rate (?/100ft)
0.00	0.00	0.00	0.00	0.00	0.00	0.00	0.00	0.00	0.00
100.00	0.00	0.00	100.00	0.00	0.00	0.00	0.00	0.00	0.00
200.00	0.00	0.00	200.00	0.00	0.00	0.00	0.00	0.00	0.00
300.00	0.00	0.00	300.00	0.00	0.00	0.00	0.00	0.00	0.00
400.00	0.00	0.00	400.00	0.00	0.00	0.00	0.00	0.00	0.00
500.00	0.00	0.00	500.00	0.00	0.00	0.00	0.00	0.00	0.00
600.00	0.00	0.00	600.00	0.00	0.00	0.00	0.00	0.00	0.00
700.00	0.00	0.00	700.00	0.00	0.00	0.00	0.00	0.00	0.00
800.00	0.00	0.00	800.00	0.00	0.00	0.00	0.00	0.00	0.00
900.00	0.00	0.00	900.00	0.00	0.00	0.00	0.00	0.00	0.00
1,000.00	0.00	0.00	1,000.00	0.00	0.00	0.00	0.00	0.00	0.00
1,100.00	0.00	0.00	1,100.00	0.00	0.00	0.00	0.00	0.00	0.00
1,200.00	0.00	0.00	1,200.00	0.00	0.00	0.00	0.00	0.00	0.00
1,300.00	0.00	0.00	1,300.00	0.00	0.00	0.00	0.00	0.00	0.00
1,400.00	0.00	0.00	1,400.00	0.00	0.00	0.00	0.00	0.00	0.00
1,500.00	0.00	0.00	1,500.00	0.00	0.00	0.00	0.00	0.00	0.00
1,525.00	0.00	0.00	1,525.00	0.00	0.00	0.00	0.00	0.00	0.00
9-5/8"									
1,600.00	0.00	0.00	1,600.00	0.00	0.00	0.00	0.00	0.00	0.00
1,700.00	0.00	0.00	1,700.00	0.00	0.00	0.00	0.00	0.00	0.00
1,800.00	0.00	0.00	1,800.00	0.00	0.00	0.00	0.00	0.00	0.00
1,900.00	0.00	0.00	1,900.00	0.00	0.00	0.00	0.00	0.00	0.00
2,000.00	0.00	0.00	2,000.00	0.00	0.00	0.00	0.00	0.00	0.00
2,100.00	0.00	0.00	2,100.00	0.00	0.00	0.00	0.00	0.00	0.00
2,200.00	0.00	0.00	2,200.00	0.00	0.00	0.00	0.00	0.00	0.00
2,300.00	0.00	0.00	2,300.00	0.00	0.00	0.00	0.00	0.00	0.00
2,400.00	0.00	0.00	2,400.00	0.00	0.00	0.00	0.00	0.00	0.00
2,500.00	0.00	0.00	2,500.00	0.00	0.00	0.00	0.00	0.00	0.00
2,600.00	0.00	0.00	2,600.00	0.00	0.00	0.00	0.00	0.00	0.00
2,700.00	0.00	0.00	2,700.00	0.00	0.00	0.00	0.00	0.00	0.00
2,800.00	0.00	0.00	2,800.00	0.00	0.00	0.00	0.00	0.00	0.00
2,900.00	0.00	0.00	2,900.00	0.00	0.00	0.00	0.00	0.00	0.00
3,000.00	0.00	0.00	3,000.00	0.00	0.00	0.00	0.00	0.00	0.00
3,100.00	0.00	0.00	3,100.00	0.00	0.00	0.00	0.00	0.00	0.00
3,200.00	0.00	0.00	3,200.00	0.00	0.00	0.00	0.00	0.00	0.00
3,300.00	0.00	0.00	3,300.00	0.00	0.00	0.00	0.00	0.00	0.00
3,400.00	0.00	0.00	3,400.00	0.00	0.00	0.00	0.00	0.00	0.00
3,500.00	0.00	0.00	3,500.00	0.00	0.00	0.00	0.00	0.00	0.00
3,600.00	0.00	0.00	3,600.00	0.00	0.00	0.00	0.00	0.00	0.00
3,700.00	0.00	0.00	3,700.00	0.00	0.00	0.00	0.00	0.00	0.00
3,800.00	0.00	0.00	3,800.00	0.00	0.00	0.00	0.00	0.00	0.00
3,900.00	0.00	0.00	3,900.00	0.00	0.00	0.00	0.00	0.00	0.00
4,000.00	0.00	0.00	4,000.00	0.00	0.00	0.00	0.00	0.00	0.00
4,100.00	0.00	0.00	4,100.00	0.00	0.00	0.00	0.00	0.00	0.00
4,200.00	0.00	0.00	4,200.00	0.00	0.00	0.00	0.00	0.00	0.00
4,300.00	0.00	0.00	4,300.00	0.00	0.00	0.00	0.00	0.00	0.00
4,400.00	0.00	0.00	4,400.00	0.00	0.00	0.00	0.00	0.00	0.00
4,500.00	0.00	0.00	4,500.00	0.00	0.00	0.00	0.00	0.00	0.00
4,600.00	0.00	0.00	4,600.00	0.00	0.00	0.00	0.00	0.00	0.00
4,700.00	0.00	0.00	4,700.00	0.00	0.00	0.00	0.00	0.00	0.00
4,800.00	0.00	0.00	4,800.00	0.00	0.00	0.00	0.00	0.00	0.00
4,900.00	0.00	0.00	4,900.00	0.00	0.00	0.00	0.00	0.00	0.00
5,000.00	0.00	0.00	5,000.00	0.00	0.00	0.00	0.00	0.00	0.00

EOG Resources Inc

Planning Report

Database:	EDM	Local Co-ordinate Reference:	Site Lion Creek 11-04H
Company:	Denver Division- Colorado	TVD Reference:	RIG @ 5470.00ft (TBD)
Project:	DJ - Hereford Ranch	MD Reference:	RIG @ 5470.00ft (TBD)
Site:	Lion Creek 11-04H	North Reference:	True
Well:	Lion Creek 11-04H	Survey Calculation Method:	Minimum Curvature
Wellbore:	Original Wellbore		
Design:	APD Directional Plan		

Planned Survey

Measured Depth (ft)	Inclination (deg)	Azimuth (deg)	Vertical Depth (ft)	+N/-S (ft)	+E/-W (ft)	Vertical Section (ft)	Dogleg Rate (?/100ft)	Build Rate (?/100ft)	Turn Rate (?/100ft)
5,100.00	0.00	0.00	5,100.00	0.00	0.00	0.00	0.00	0.00	0.00
5,200.00	0.00	0.00	5,200.00	0.00	0.00	0.00	0.00	0.00	0.00
5,300.00	0.00	0.00	5,300.00	0.00	0.00	0.00	0.00	0.00	0.00
5,400.00	0.00	0.00	5,400.00	0.00	0.00	0.00	0.00	0.00	0.00
5,500.00	0.00	0.00	5,500.00	0.00	0.00	0.00	0.00	0.00	0.00
5,600.00	0.00	0.00	5,600.00	0.00	0.00	0.00	0.00	0.00	0.00
5,700.00	0.00	0.00	5,700.00	0.00	0.00	0.00	0.00	0.00	0.00
5,800.00	0.00	0.00	5,800.00	0.00	0.00	0.00	0.00	0.00	0.00
5,900.00	0.00	0.00	5,900.00	0.00	0.00	0.00	0.00	0.00	0.00
6,000.00	0.00	0.00	6,000.00	0.00	0.00	0.00	0.00	0.00	0.00
6,100.00	0.00	0.00	6,100.00	0.00	0.00	0.00	0.00	0.00	0.00
6,200.00	0.00	0.00	6,200.00	0.00	0.00	0.00	0.00	0.00	0.00
6,300.00	0.00	0.00	6,300.00	0.00	0.00	0.00	0.00	0.00	0.00
6,400.00	0.00	0.00	6,400.00	0.00	0.00	0.00	0.00	0.00	0.00
6,500.00	0.00	0.00	6,500.00	0.00	0.00	0.00	0.00	0.00	0.00
6,600.00	0.00	0.00	6,600.00	0.00	0.00	0.00	0.00	0.00	0.00
6,700.00	0.00	0.00	6,700.00	0.00	0.00	0.00	0.00	0.00	0.00
6,800.00	0.00	0.00	6,800.00	0.00	0.00	0.00	0.00	0.00	0.00
6,900.00	0.00	0.00	6,900.00	0.00	0.00	0.00	0.00	0.00	0.00
7,000.00	0.00	0.00	7,000.00	0.00	0.00	0.00	0.00	0.00	0.00
7,100.00	0.00	0.00	7,100.00	0.00	0.00	0.00	0.00	0.00	0.00
7,200.00	0.00	0.00	7,200.00	0.00	0.00	0.00	0.00	0.00	0.00
7,252.53	0.00	0.00	7,252.53	0.00	0.00	0.00	0.00	0.00	0.00
7,300.00	5.70	334.51	7,299.92	2.13	-1.01	2.36	12.00	12.00	0.00
7,400.00	17.70	334.51	7,397.67	20.39	-9.72	22.59	12.00	12.00	0.00
7,500.00	29.70	334.51	7,489.07	56.60	-26.98	62.71	12.00	12.00	0.00
7,600.00	41.70	334.51	7,570.13	109.18	-52.04	120.95	12.00	12.00	0.00
7,700.00	53.70	334.51	7,637.32	175.82	-83.81	194.77	12.00	12.00	0.00
7,800.00	65.70	334.51	7,687.68	253.61	-120.89	280.95	12.00	12.00	0.00
7,900.00	77.70	334.51	7,719.03	339.15	-161.67	375.72	12.00	12.00	0.00
8,000.00	89.70	334.51	7,729.99	428.71	-204.37	474.93	12.00	12.00	0.00
8,002.54	90.00	334.51	7,730.00	431.00	-205.46	477.47	11.98	11.98	0.00
7"									
8,100.00	90.00	334.51	7,730.00	518.98	-247.40	574.93	0.00	0.00	0.00
8,200.00	90.00	334.51	7,730.00	609.25	-290.43	674.93	0.00	0.00	0.00
8,300.00	90.00	334.51	7,730.00	699.52	-333.46	774.93	0.00	0.00	0.00
8,400.00	90.00	334.51	7,730.00	789.78	-376.49	874.93	0.00	0.00	0.00
8,500.00	90.00	334.51	7,730.00	880.05	-419.52	974.93	0.00	0.00	0.00
8,600.00	90.00	334.51	7,730.00	970.32	-462.55	1,074.93	0.00	0.00	0.00
8,700.00	90.00	334.51	7,730.00	1,060.59	-505.58	1,174.93	0.00	0.00	0.00
8,800.00	90.00	334.51	7,730.00	1,150.86	-548.61	1,274.93	0.00	0.00	0.00
8,900.00	90.00	334.51	7,730.00	1,241.13	-591.64	1,374.93	0.00	0.00	0.00
9,000.00	90.00	334.51	7,730.00	1,331.39	-634.67	1,474.93	0.00	0.00	0.00
9,100.00	90.00	334.51	7,730.00	1,421.66	-677.70	1,574.93	0.00	0.00	0.00
9,200.00	90.00	334.51	7,730.00	1,511.93	-720.73	1,674.93	0.00	0.00	0.00
9,300.00	90.00	334.51	7,730.00	1,602.20	-763.76	1,774.93	0.00	0.00	0.00
9,400.00	90.00	334.51	7,730.00	1,692.47	-806.79	1,874.93	0.00	0.00	0.00
9,500.00	90.00	334.51	7,730.00	1,782.74	-849.82	1,974.93	0.00	0.00	0.00
9,600.00	90.00	334.51	7,730.00	1,873.00	-892.85	2,074.93	0.00	0.00	0.00
9,700.00	90.00	334.51	7,730.00	1,963.27	-935.88	2,174.93	0.00	0.00	0.00
9,800.00	90.00	334.51	7,730.00	2,053.54	-978.91	2,274.93	0.00	0.00	0.00
9,900.00	90.00	334.51	7,730.00	2,143.81	-1,021.95	2,374.93	0.00	0.00	0.00
10,000.00	90.00	334.51	7,730.00	2,234.08	-1,064.98	2,474.93	0.00	0.00	0.00

EOG Resources Inc

Planning Report

Database:	EDM	Local Co-ordinate Reference:	Site Lion Creek 11-04H
Company:	Denver Division- Colorado	TVD Reference:	RIG @ 5470.00ft (TBD)
Project:	DJ - Hereford Ranch	MD Reference:	RIG @ 5470.00ft (TBD)
Site:	Lion Creek 11-04H	North Reference:	True
Well:	Lion Creek 11-04H	Survey Calculation Method:	Minimum Curvature
Wellbore:	Original Wellbore		
Design:	APD Directional Plan		

Planned Survey									
Measured Depth (ft)	Inclination (deg)	Azimuth (deg)	Vertical Depth (ft)	+N/-S (ft)	+E/-W (ft)	Vertical Section (ft)	Dogleg Rate (?/100ft)	Build Rate (?/100ft)	Turn Rate (?/100ft)
10,100.00	90.00	334.51	7,730.00	2,324.35	-1,108.01	2,574.93	0.00	0.00	0.00
10,200.00	90.00	334.51	7,730.00	2,414.61	-1,151.04	2,674.93	0.00	0.00	0.00
10,300.00	90.00	334.51	7,730.00	2,504.88	-1,194.07	2,774.93	0.00	0.00	0.00
10,400.00	90.00	334.51	7,730.00	2,595.15	-1,237.10	2,874.93	0.00	0.00	0.00
10,500.00	90.00	334.51	7,730.00	2,685.42	-1,280.13	2,974.93	0.00	0.00	0.00
10,600.00	90.00	334.51	7,730.00	2,775.69	-1,323.16	3,074.93	0.00	0.00	0.00
10,700.00	90.00	334.51	7,730.00	2,865.96	-1,366.19	3,174.93	0.00	0.00	0.00
10,800.00	90.00	334.51	7,730.00	2,956.22	-1,409.22	3,274.93	0.00	0.00	0.00
10,900.00	90.00	334.51	7,730.00	3,046.49	-1,452.25	3,374.93	0.00	0.00	0.00
11,000.00	90.00	334.51	7,730.00	3,136.76	-1,495.28	3,474.93	0.00	0.00	0.00
11,100.00	90.00	334.51	7,730.00	3,227.03	-1,538.31	3,574.93	0.00	0.00	0.00
11,200.00	90.00	334.51	7,730.00	3,317.30	-1,581.34	3,674.93	0.00	0.00	0.00
11,300.00	90.00	334.51	7,730.00	3,407.57	-1,624.37	3,774.93	0.00	0.00	0.00
11,400.00	90.00	334.51	7,730.00	3,497.83	-1,667.40	3,874.93	0.00	0.00	0.00
11,500.00	90.00	334.51	7,730.00	3,588.10	-1,710.43	3,974.93	0.00	0.00	0.00
11,600.00	90.00	334.51	7,730.00	3,678.37	-1,753.46	4,074.93	0.00	0.00	0.00
11,700.00	90.00	334.51	7,730.00	3,768.64	-1,796.50	4,174.93	0.00	0.00	0.00
11,800.00	90.00	334.51	7,730.00	3,858.91	-1,839.53	4,274.93	0.00	0.00	0.00
11,900.00	90.00	334.51	7,730.00	3,949.18	-1,882.56	4,374.93	0.00	0.00	0.00
12,000.00	90.00	334.51	7,730.00	4,039.44	-1,925.59	4,474.93	0.00	0.00	0.00
12,100.00	90.00	334.51	7,730.00	4,129.71	-1,968.62	4,574.93	0.00	0.00	0.00
12,200.00	90.00	334.51	7,730.00	4,219.98	-2,011.65	4,674.93	0.00	0.00	0.00
12,300.00	90.00	334.51	7,730.00	4,310.25	-2,054.68	4,774.93	0.00	0.00	0.00
12,339.70	90.00	334.51	7,730.00	4,346.08	-2,071.76	4,814.63	0.00	0.00	0.00
Lion Creek 11-04H (BHL)									

Targets									
Target Name	Dip Angle (deg)	Dip Dir. (deg)	TVD (ft)	+N/-S (ft)	+E/-W (ft)	Northing (ft)	Easting (ft)	Latitude	Longitude
- hit/miss target									
- Shape									
Lion Creek 11-04H (B	0.00	0.00	7,730.00	4,346.08	-2,071.76	592,444.22	2,261,908.70	40° 57' 20.902 N	104° 33' 6.631 W
- plan hits target center									
- Point									

Casing Points					
Measured Depth (ft)	Vertical Depth (ft)	Name	Casing Diameter (")	Hole Diameter (")	
1,525.00	1,525.00	9-5/8"	9-5/8	13-1/2	
8,002.54	7,730.00	7"	7	8-3/4	
12,339.70	7,730.00	4 1/2"	4-1/2	6	