

EOG RESOURCES, INC.

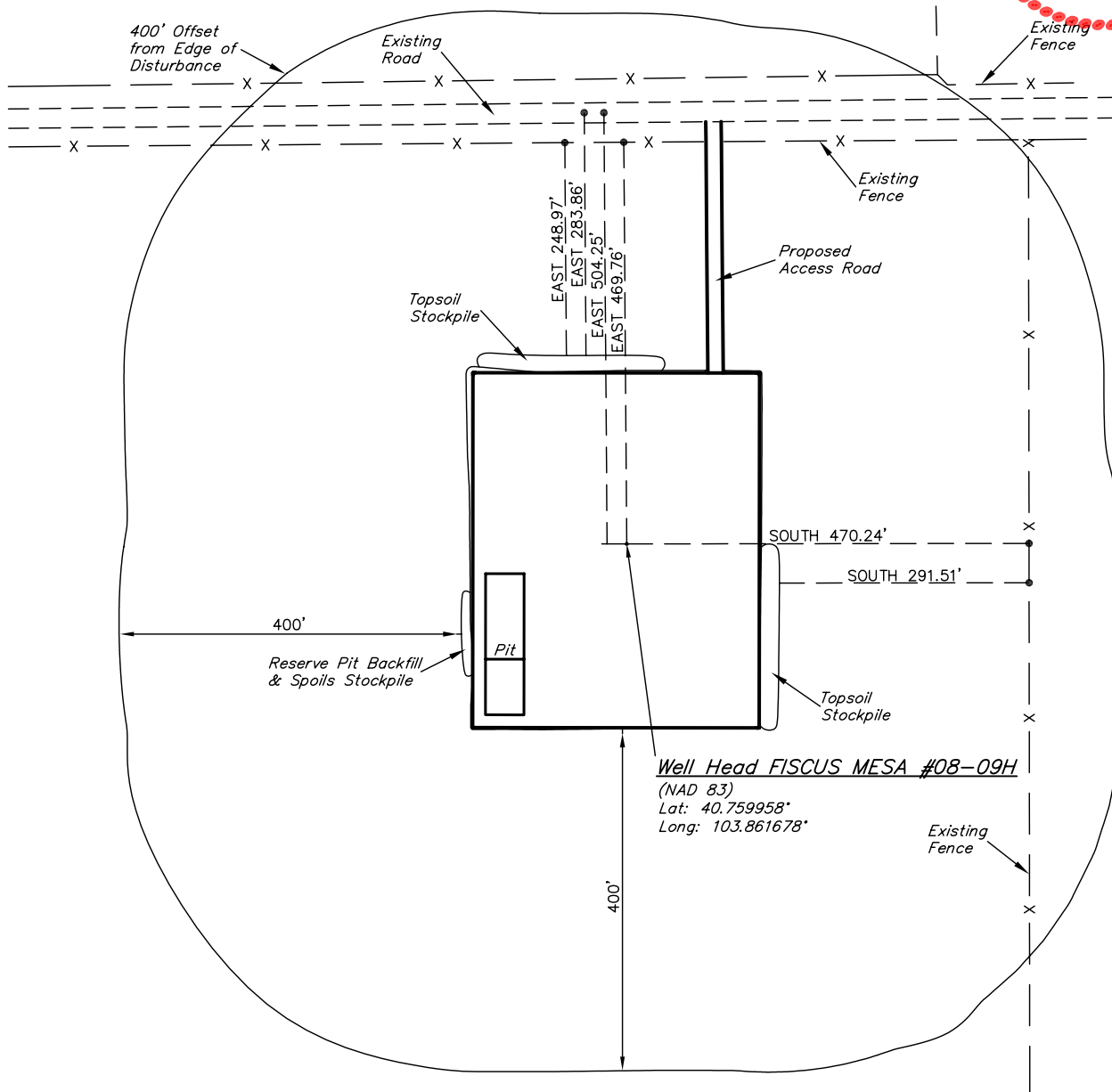
ADDENDUM TO LEGAL PLAT FOR

FISCUS MESA #08-09H
SECTION 9, T9N, R58W, 6th. P.M.
501' FSL 501' FEL

SCALE: 1" = 200'

DATE: 10-18-10

DRAWN BY: J.I.



EOG RESOURCES, INC.

CONSTRUCTION LAYOUT FOR

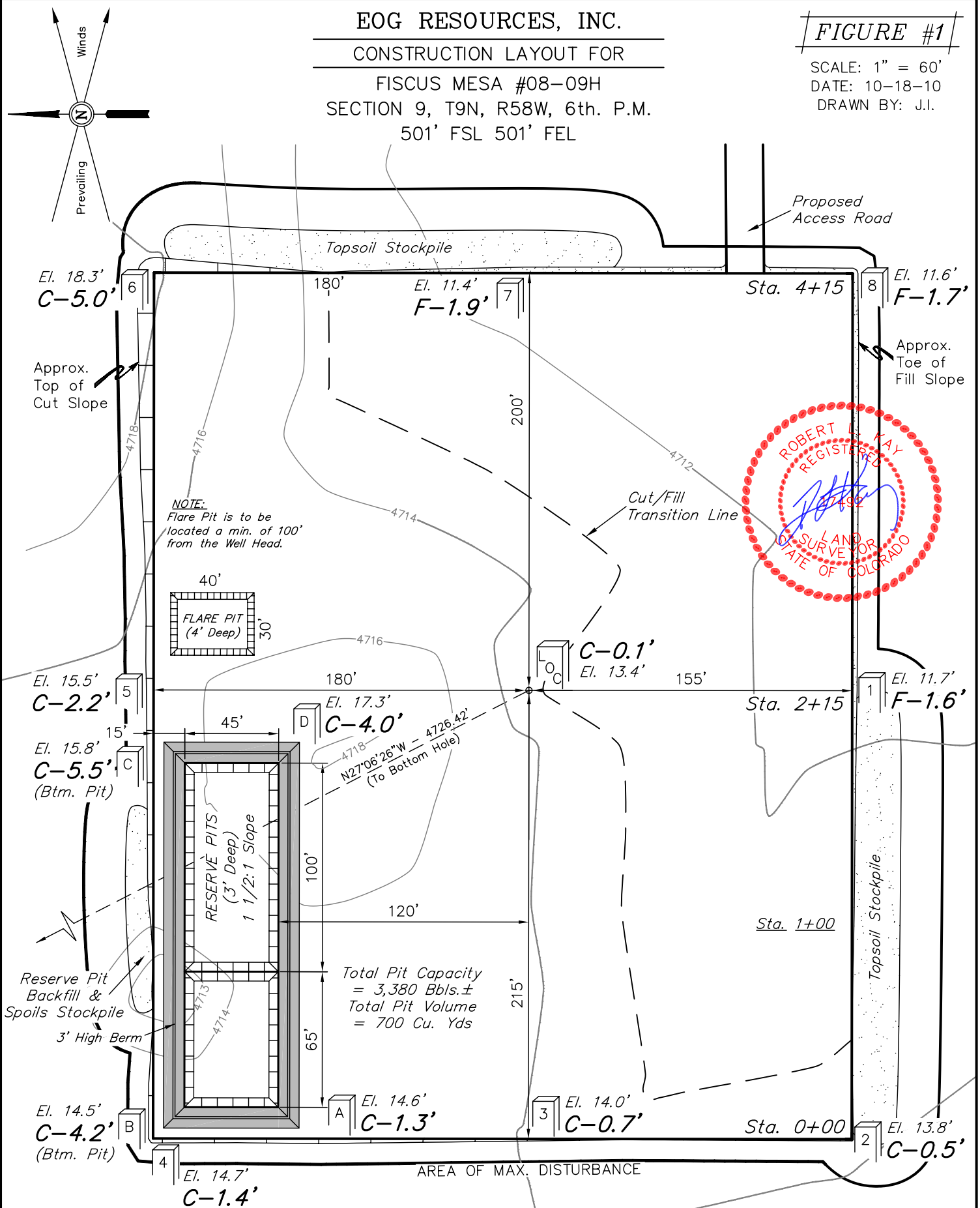
FISCUS MESA #08-09H
SECTION 9, T9N, R58W, 6th. P.M.
501' FSL 501' FEL

FIGURE #1

SCALE: 1" = 60'

DATE: 10-18-10

DRAWN BY: J.I.



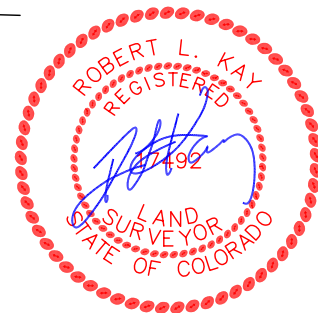
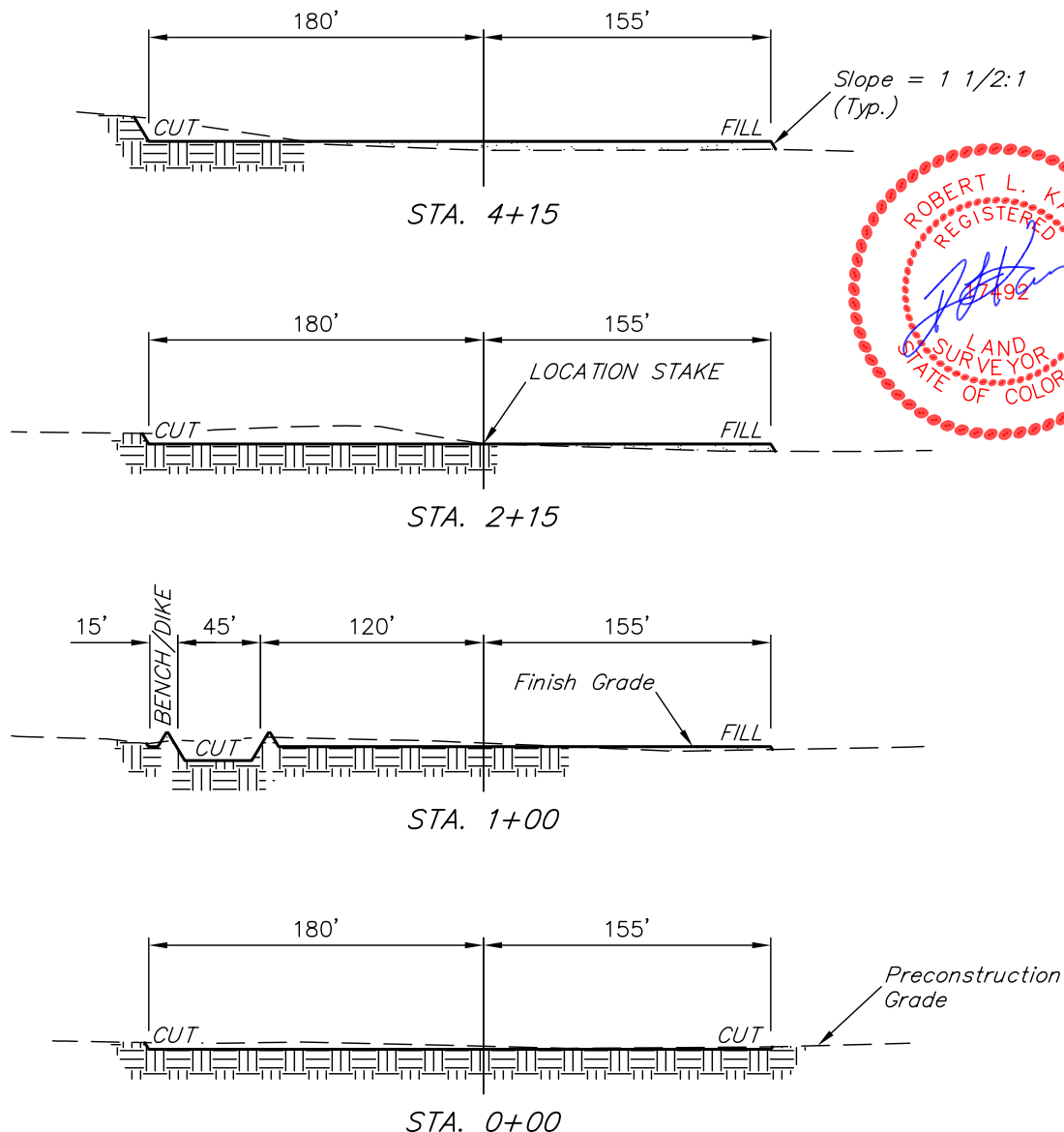
Elev. Ungraded Ground At Loc. Stake = 4713.4'
FINISHED GRADE ELEV. AT LOC. STAKE = 4713.3'

UINTAH ENGINEERING & LAND SURVEYING
85 So. 200 East * Vernal, Utah 84078 * (435) 789-1017

1" = 40'
X-Section
Scale
1" = 100'
DATE: 10-18-10
DRAWN BY: J.I.

EOG RESOURCES, INC.
CONSTRUCTION LAYOUT CROSS SECTIONS FOR
FISCUS MESA #08-09H
SECTION 9, T9N, R58W, 6th. P.M.
501' FSL 501' FEL

FIGURE #2



NOTE:

Topsoil should not be Stripped Below Finished Grade on Substructure Area.

APPROXIMATE ACREAGES
WELL SITE DISTURBANCE = ± 4.033 ACRES
ACCESS ROAD DISTURBANCE = ± 0.203 ACRES
TOTAL = ± 4.236 ACRES

* NOTE:
FILL QUANTITY INCLUDES 5% FOR COMPACTION

APPROXIMATE YARDAGES

(6") Topsoil Stripping = 2,680 Cu. Yds.
Remaining Location = 4,080 Cu. Yds.
TOTAL CUT = 6,760 CU.YDS.
FILL = 3,730 CU.YDS.

EXCESS MATERIAL = 3,030 Cu. Yds.
Topsoil & Pit Backfill = 3,030 Cu. Yds.
(1/2 Pit Vol.)
EXCESS UNBALANCE = 0 Cu. Yds.
(After Interim Rehabilitation)

UINTAH ENGINEERING & LAND SURVEYING
85 So. 200 East * Vernal, Utah 84078 * (435) 789-1017

EOG RESOURCES, INC.

TYPICAL RIG LAYOUT FOR

FISCUS MESA #08-09H
SECTION 9, T9N, R58W, 6th. P.M.
501' FSL 501' FEL

FIGURE #3

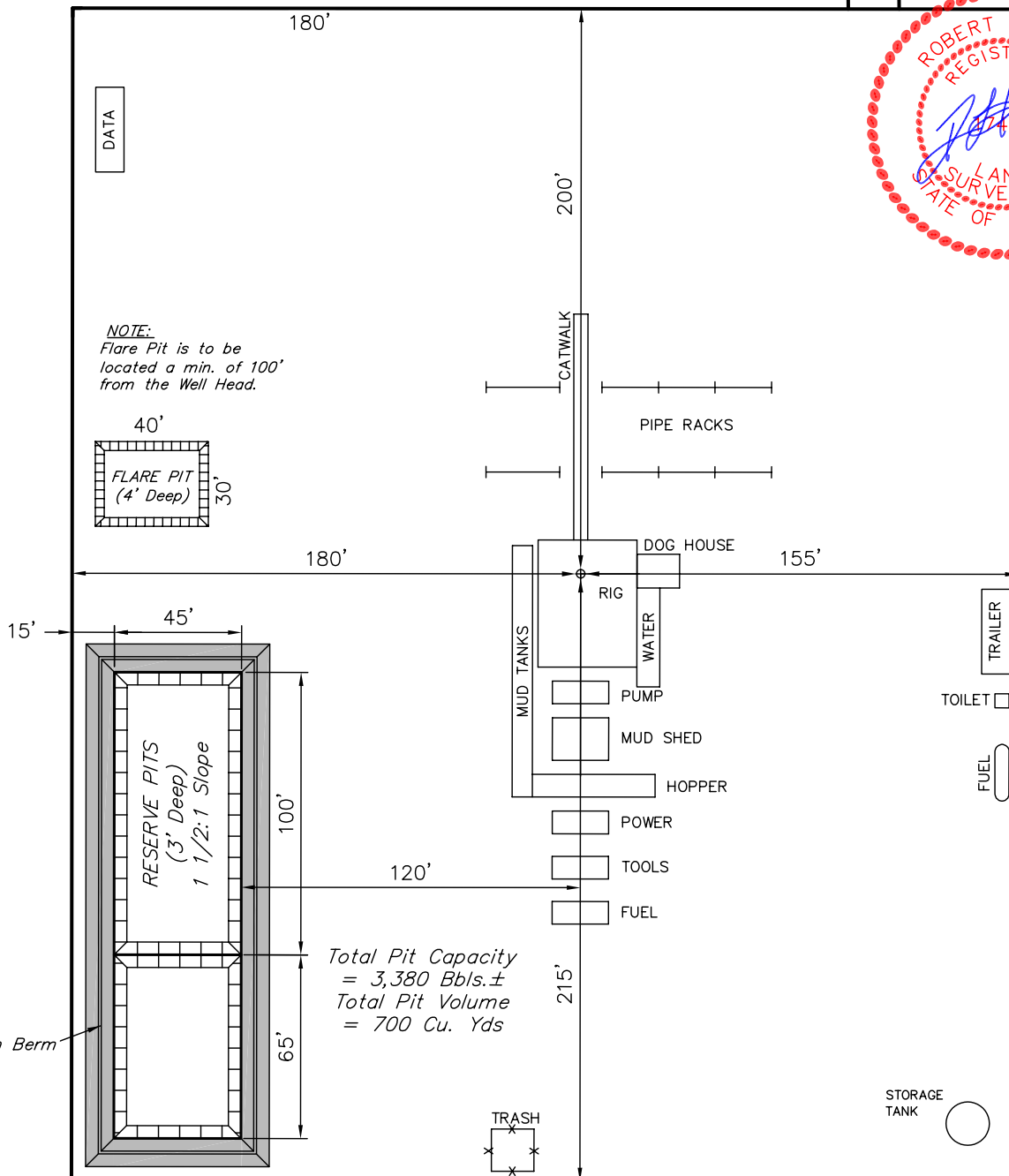
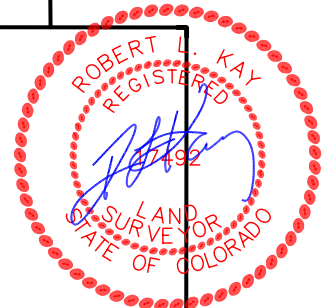
SCALE: 1" = 60'

DATE: 10-18-10

DRAWN BY: J.I.



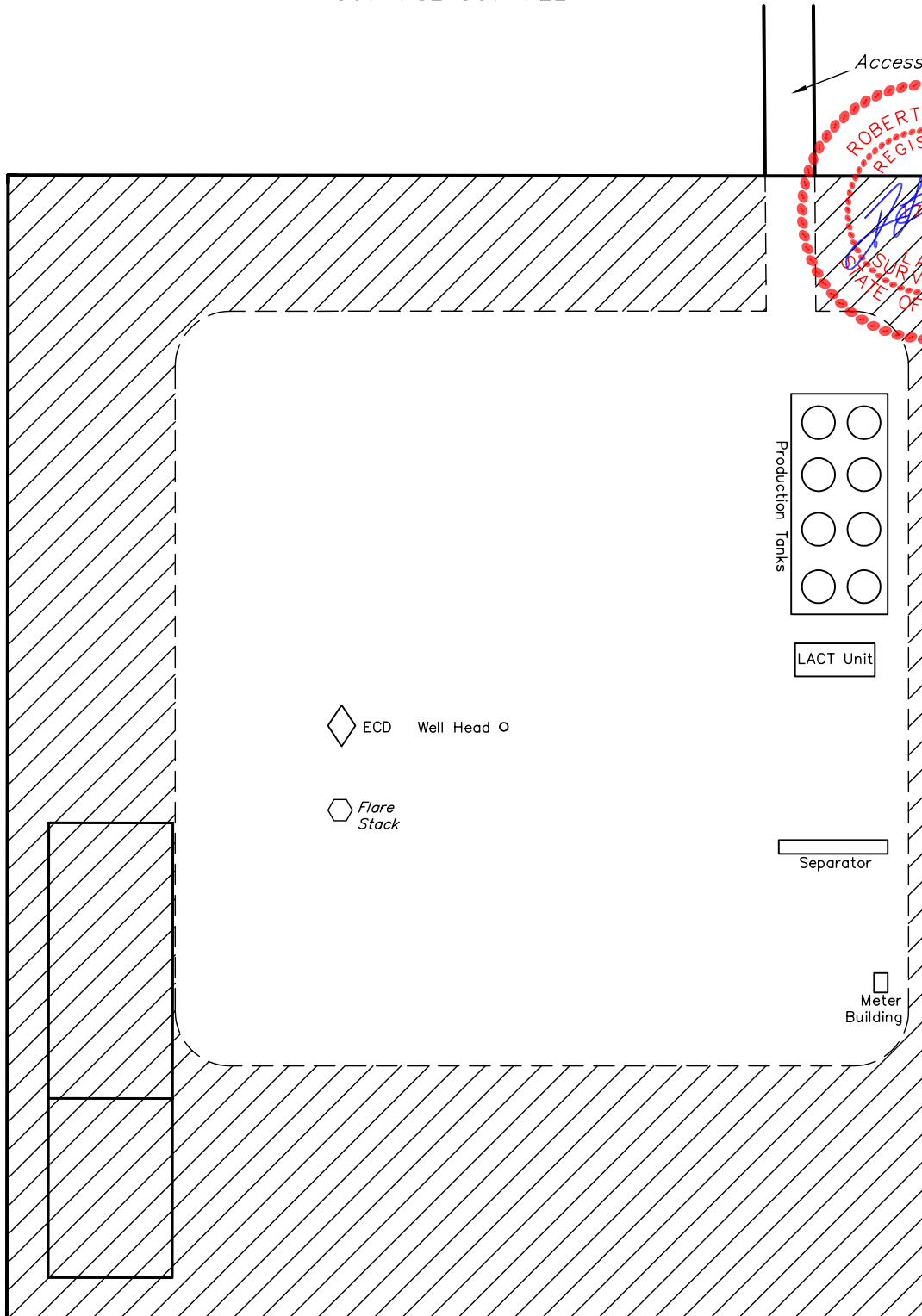
Proposed
Access Road



EOG RESOURCES, INC.
RECLAMATION DIAGRAM FOR
FISCUS MESA #08-09H
SECTION 9, T9N, R58W, 6th. P.M.
501' FSL 501' FEL

FIGURE #4

SCALE: 1" = 60'
DATE: 10-18-10
DRAWN BY: J.I.



APPROXIMATE ACREAGES
UN-RECLAIMED = ± 1.684 ACRES

 RECLAIMED AREA

UINTAH ENGINEERING & LAND SURVEYING
85 So. 200 East * Vernal, Utah 84078 * (435) 789-1017

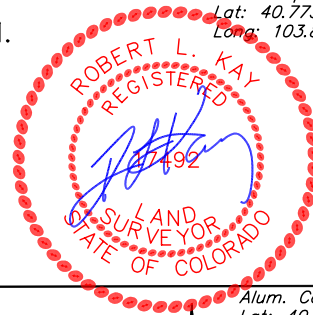
EOG RESOURCES, INC.

LOCATION DRAWING FOR

FISCUS MESA #08-09H
SECTION 9, T9N, R58W, 6th. P.M.
501' FSL 501' FEL

FIGURE #5

NE Cor. Sec. 9
Alum. Cap
Lat: 40.773158°
Long: 103.859992°



Alum. Cap
Lat: 40.765881°
Long: 103.859931°



SCALE

DATE: 10-18-10
DRAWN BY: J.I.

1/4 Section Line

9

1/4 Section Line

1/16 Section Line

N43°04'15"W - 3518.27'
(To Water Well)

N26°30'00"W - 30.21 Miles
(To Railroad)

S87°03'03"W - 11204.11'
(To Building & Powerline)

ROBERT ROHN

N89°34'35"E
504.25'
(To County Road #127)

SW Cor. Sec. 9
Set 2.5" Alum. Cap,
0.5' Below Road
Lat: 40.758589°
Long: 103.273858°

Section Line

S89°57'05"E - 5258.08' (Meas.)

Alum. Cap
Lat: 40.758581°
Long: 103.859856°

PLANT COMMUNITY

- ☐ DISTURBED GRASSLAND
- ☐ NATIVE GRASSLAND
- ☐ SHRUB LAND
- ☐ PLAINS RIPARIAN
- ☐ MOUNTAIN RIPARIAN
- ☐ FOREST LAND
- ☐ WETLANDS AQUATIC
- ☐ ALPINE
- ☐ OTHER (Describe): _____

CURRENT LAND USE

- CROP LAND: ☐ IRRIGATED ☐ DRY LAND ☐ IMPROVED PASTURE ☐ HAY MEADOW ☐ CRP
- NON-CROP LAND: ☐ RANGELAND ☐ TIMBER ☐ RECREATIONAL ☐ OTHER (Describe) _____
- SUBDIVIDED: ☐ INDUSTRIAL ☐ COMMERCIAL ☐ RESIDENTIAL _____

FUTURE LAND USE

- CROP LAND: ☐ IRRIGATED ☐ DRY LAND ☐ IMPROVED PASTURE ☐ HAY MEADOW ☐ CRP
- NON-CROP LAND: ☐ RANGELAND ☐ TIMBER ☐ RECREATIONAL ☐ OTHER (Describe) _____
- SUBDIVIDED: ☐ INDUSTRIAL ☐ COMMERCIAL ☐ RESIDENTIAL _____