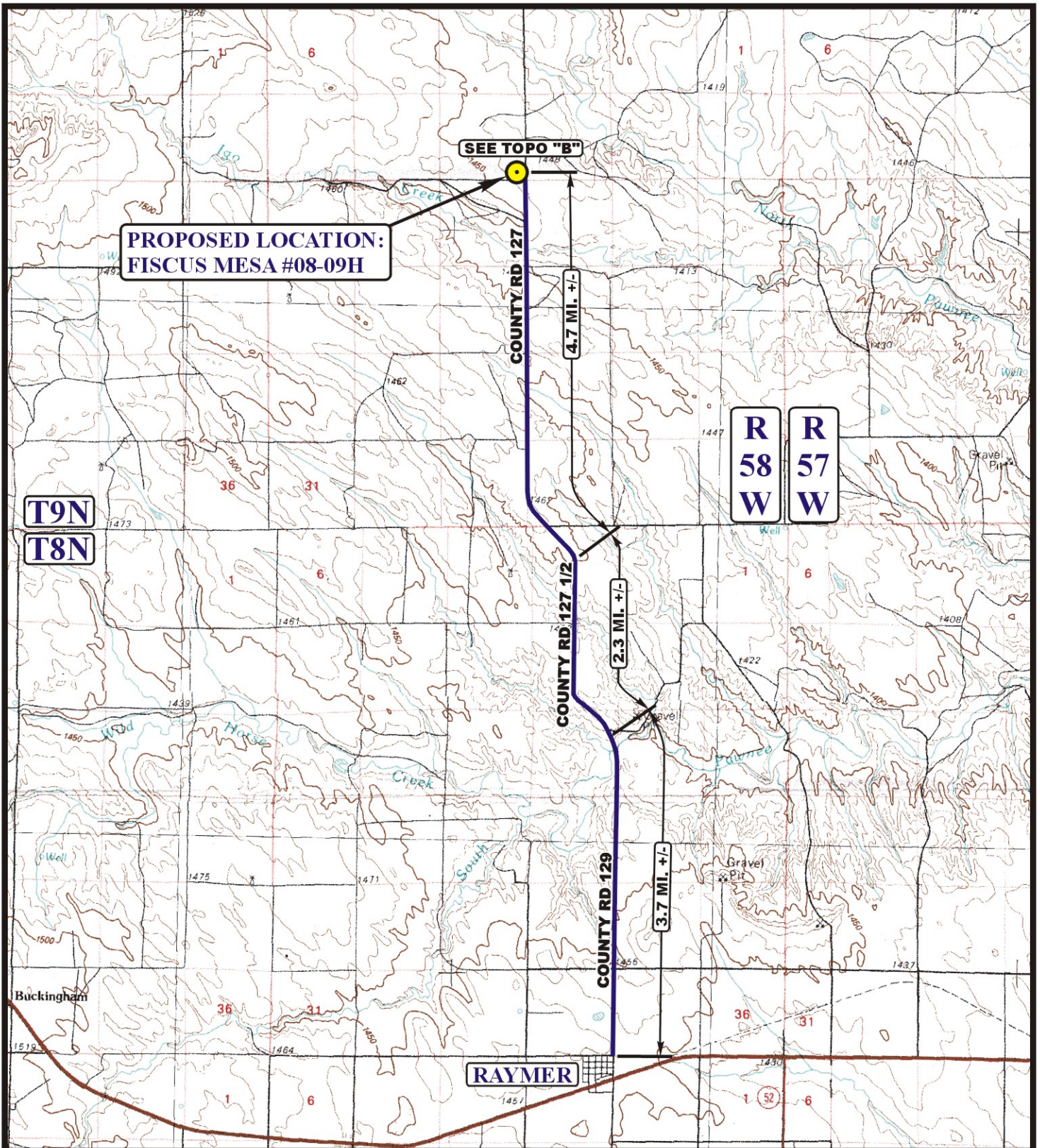


EOG RESOURCES, INC.
FISCUS MESA #08-09H
SECTION 9, T9N, R58W, 6th P.M.

PROCEED IN A NORTHERLY DIRECTION FROM RAYMER, COLORADO ALONG COUNTY ROAD 129 APPROXIMATELY 3.7 MILES TO THE JUNCTION OF THIS ROAD AND COUNTY ROAD 127 ½ TO THE NORTHWEST; TURN LEFT AND PROCEED IN A NORTHWESTERLY, THEN NORTHERLY DIRECTION APPROXIMATELY 2.3 MILES TO THE JUNCTION OF THIS ROAD AND COUNTY ROAD 127 TO THE NORTHWEST; TURN LEFT AND PROCEED IN A NORTHWESTERLY, THEN NORTHERLY DIRECTION APPROXIMATELY 4.7 MILES TO BEGINNING OF THE PROPOSED ACCESS TO THE WEST; FOLLOW ROAD FLAGS IN A WESTERLY DIRECTION APPROXIMATELY 295' TO THE PROPOSED LOCATION.

TOTAL DISTANCE FROM RAYMER, COLORADO TO THE PROPOSED LOCATION IS APPROXIMATELY 10.7 MILES.



**PROPOSED LOCATION:
FISCUS MESA #08-09H**

SEE TOPO "B"

COUNTY RD 127

COUNTY RD 127 1/2

COUNTY RD 129

RAYMER

R 58 W
R 57 W

T9N
T8N

LEGEND:

 **PROPOSED LOCATION**



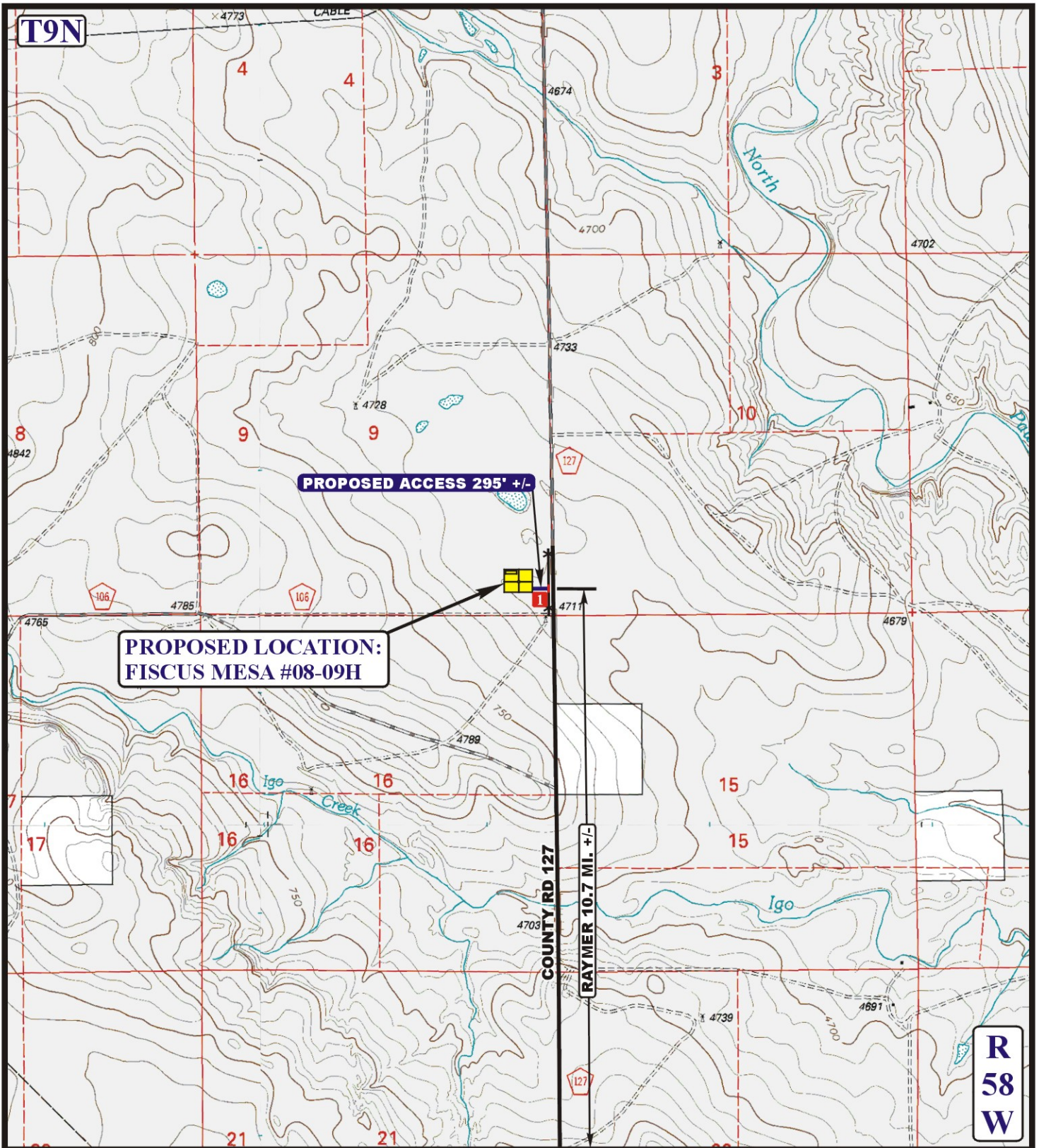
EOG RESOURCES, INC.

FISCUS MESA #08-09H
SECTION 9, T9N, R58W, 6th P.M.
501' FSL 501' FEL



Utah Engineering & Land Surveying
85 South 200 East Vernal, Utah 84078
(435) 789-1017 * FAX (435) 789-1813

ACCESS ROAD MAP	10	19	10	A TOPO
	MONTH	DAY	YEAR	
SCALE: 1:100,000	DRAWN BY: J.J.		REVISED: 00-00-00	



LEGEND:

- EXISTING ROAD
- PROPOSED ACCESS ROAD
- EXISTING FENCE
- INSTALL CATTLEGUARD



Uintah Engineering & Land Surveying
 85 South 200 East Vernal, Utah 84078
 (435) 789-1017 * FAX (435) 789-1813



EOG RESOURCES, INC.

FISCUS MESA #08-09H
SECTION 9, T9N, R58W, 6th P.M.
501' FSL 501' FEL

ACCESS ROAD MAP	10	19	10	B TOPO
	MONTH	DAY	YEAR	
SCALE: 1" = 2000'	DRAWN BY: J.J.		REVISED: 00-00-00	