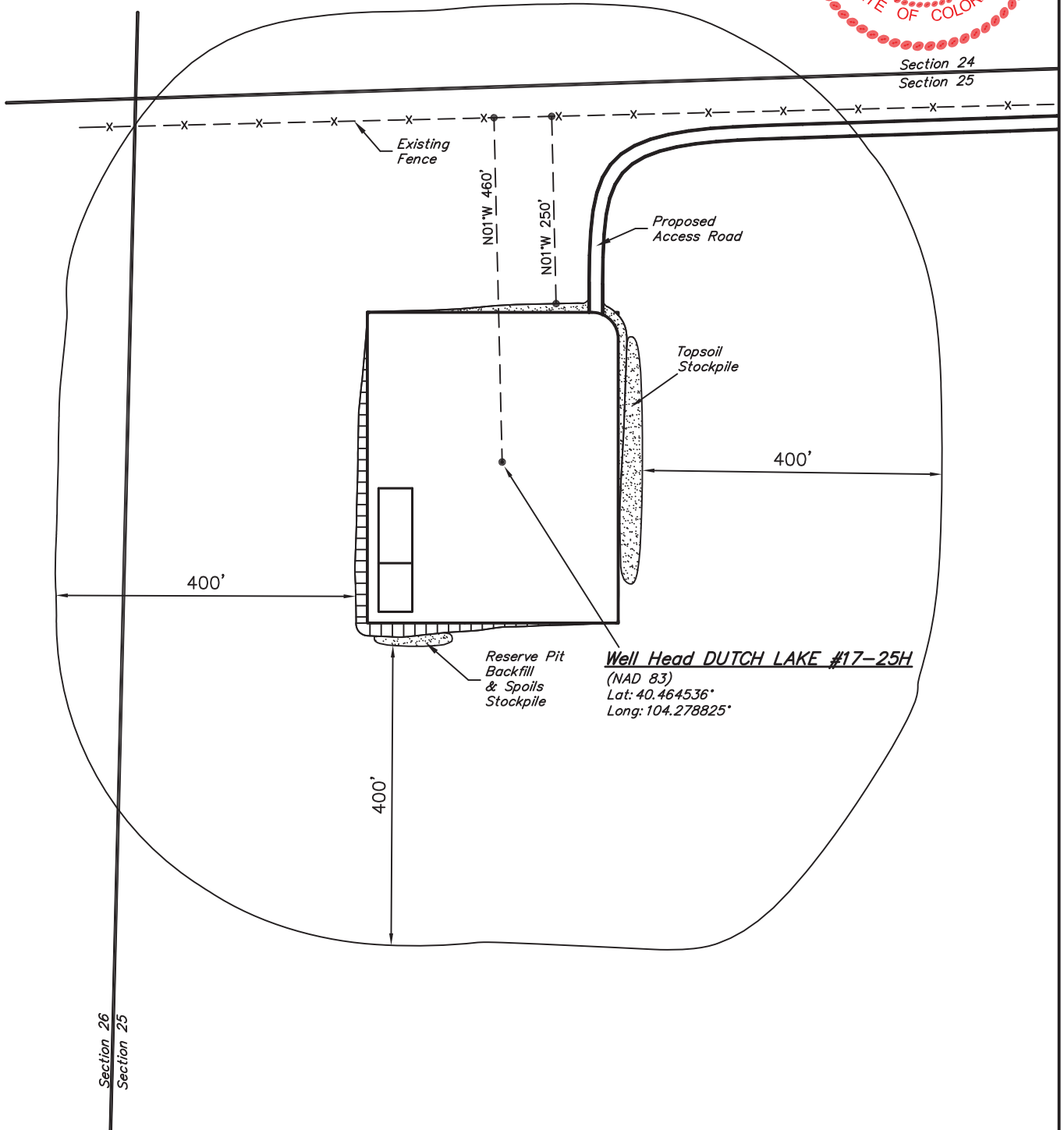


EOG RESOURCES, INC.

ADDENDUM TO LEGAL PLAT FOR  
DUTCH LAKE #17-25H  
SECTION 25, T6N, R62W, 6th P.M.  
501' FNL 501' FWL

SCALE: 1" = 200'  
DATE: 02-04-11  
DRAWN BY: K.O.



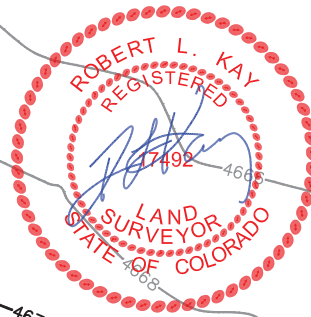
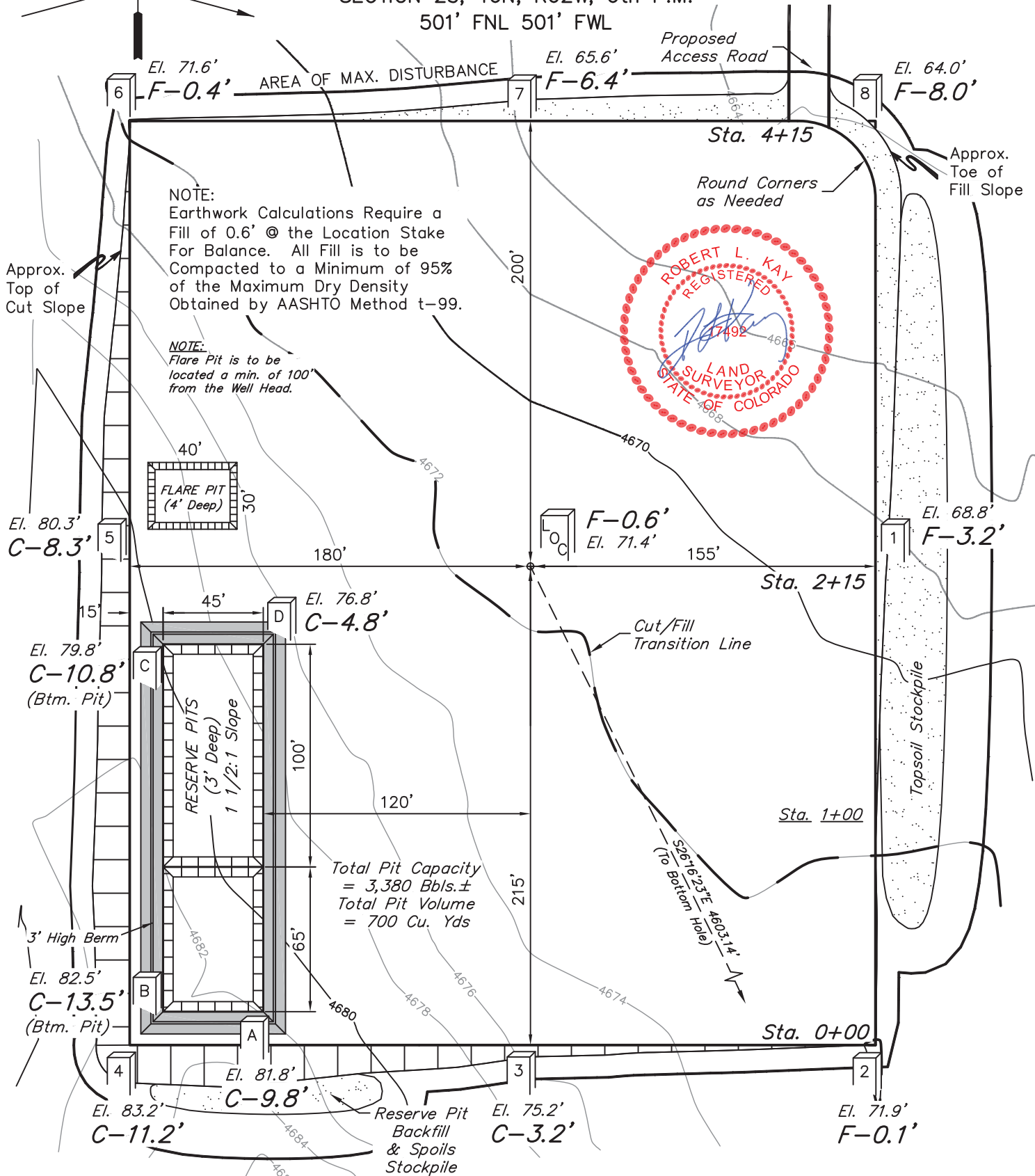
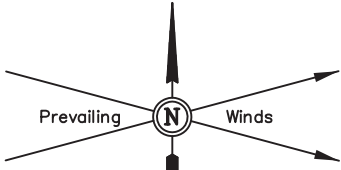
EOG RESOURCES, INC.

CONSTRUCTION LAYOUT FOR

DUTCH LAKE #17-25H  
SECTION 25, T6N, R62W, 6th P.M.  
501' FNL 501' FWL

FIGURE #1

SCALE: 1" = 60'  
DATE: 02-04-11  
DRAWN BY: K.O.



Elev. Ungraded Ground At Loc. Stake = 4671.4'  
FINISHED GRADE ELEV. AT LOC. STAKE = 4672.0'

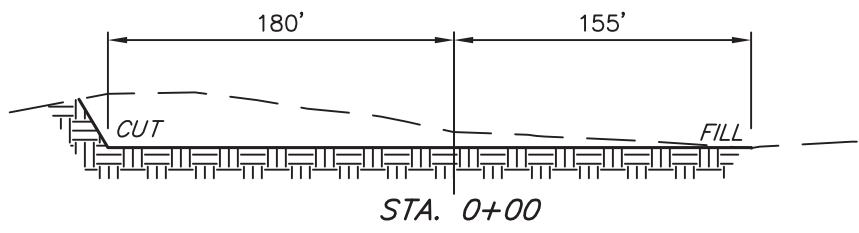
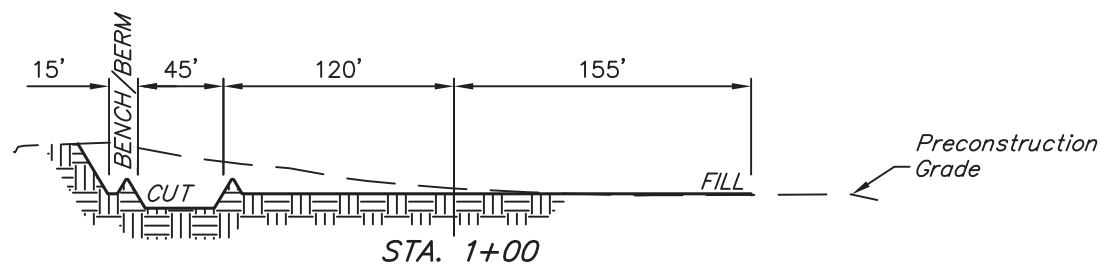
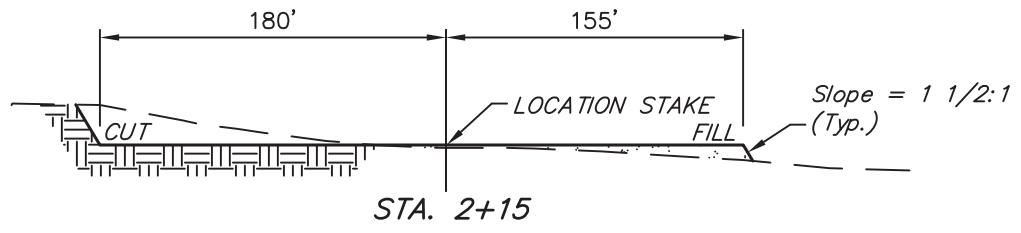
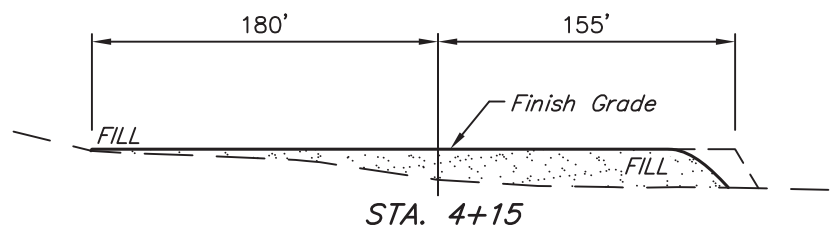
UINTAH ENGINEERING & LAND SURVEYING  
85 So. 200 East \* Vernal, Utah 84078 \* (435) 789-1017

EOG RESOURCES, INC.

FIGURE #2

CONSTRUCTION LAYOUT CROSS SECTIONS FOR  
 DUTCH LAKE #17-25H  
 SECTION 25, T6N, R62W, 6th P.M.  
 501' FNL 501' FWL

1" = 40'  
 X-Section Scale  
 1" = 100'  
 DATE: 02-04-11  
 DRAWN BY: K.O.



**APPROXIMATE ACREAGES**  
 WELL SITE DISTURBANCE = ± 4.180 ACRES  
 ACCESS ROAD DISTURBANCE = ± 3.347 ACRES  
TOTAL = ± 7.527 ACRES

\* NOTE:  
 FILL QUANTITY INCLUDES  
 5% FOR COMPACTION

**APPROXIMATE YARDAGES**

(6") Topsoil Stripping	=	2,870 Cu. Yds.
Remaining Location	=	10,050 Cu. Yds.
<b>TOTAL CUT</b>	=	<b>12,920 CU.YDS.</b>
<b>FILL</b>	=	<b>9,700 CU.YDS.</b>

EXCESS MATERIAL	=	3,220 Cu. Yds.
Topsoil & Pit Backfill (1/2 Pit Vol.)	=	3,220 Cu. Yds.
EXCESS UNBALANCE (After Interim Rehabilitation)	=	0 Cu. Yds.

UINTAH ENGINEERING & LAND SURVEYING  
 85 So. 200 East \* Vernal, Utah 84078 \* (435) 789-1017

EOG RESOURCES, INC.

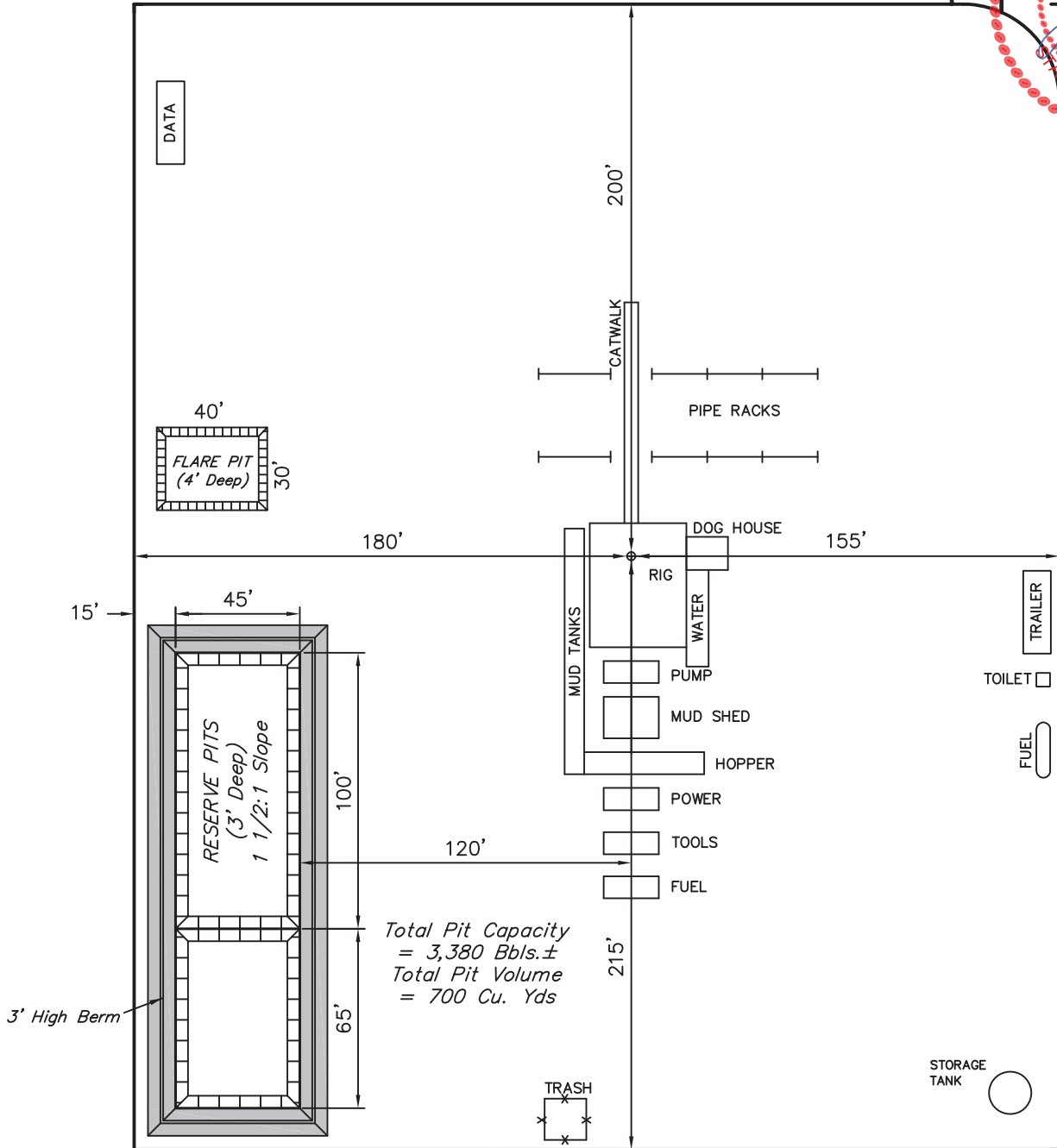
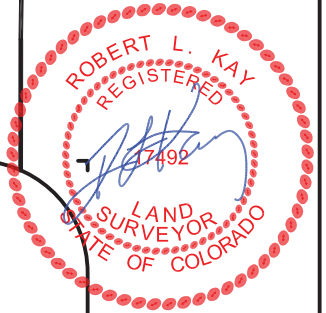
TYPICAL RIG LAYOUT FOR  
DUTCH LAKE #17-25H  
SECTION 25, T6N, R62W, 6th P.M.  
501' FNL 501' FWL

FIGURE #3

SCALE: 1" = 60'  
DATE: 02-04-11  
DRAWN BY: K.O.



Proposed  
Access Road



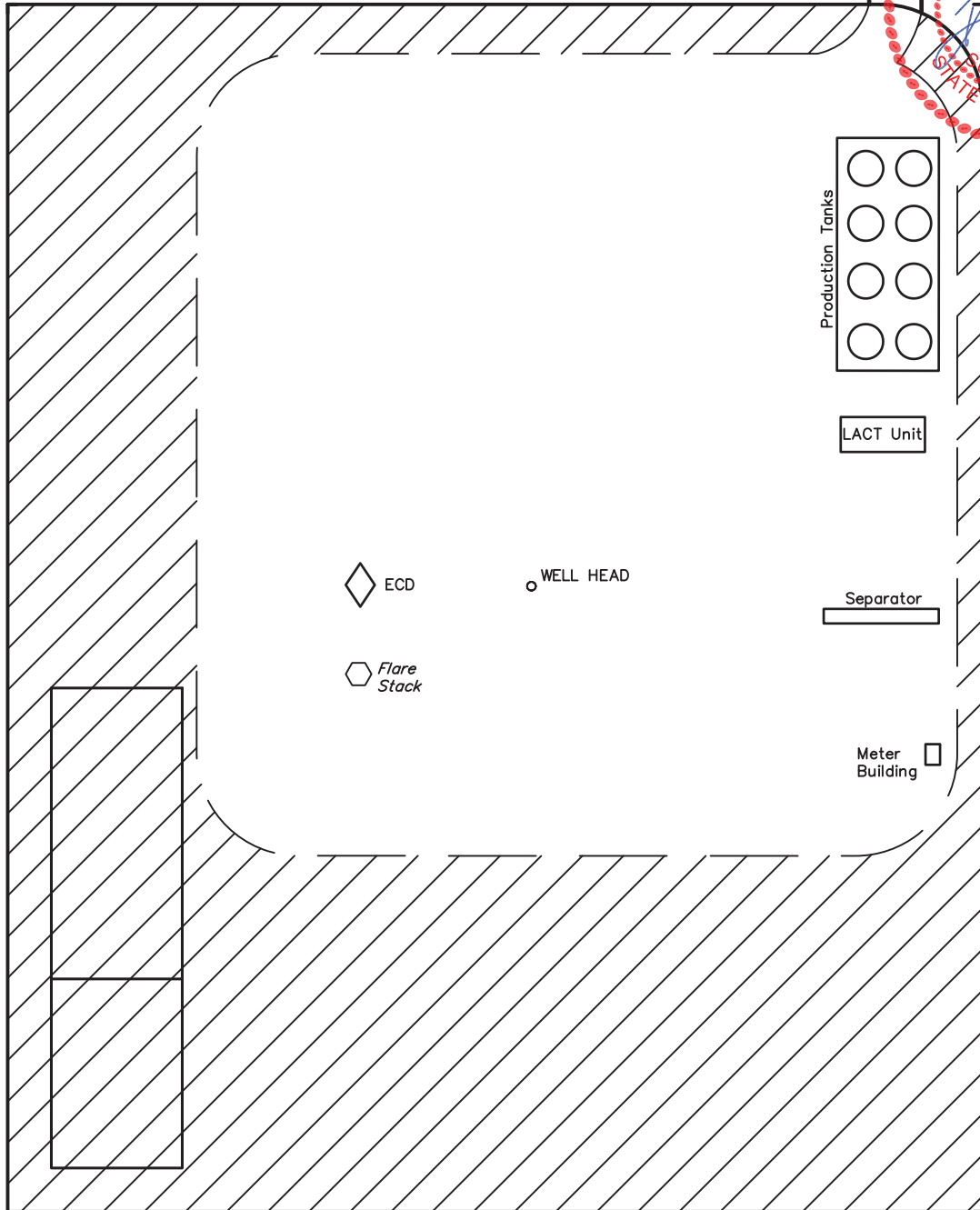
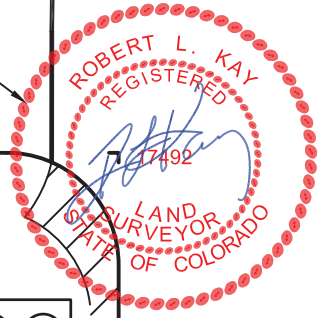
Total Pit Capacity  
= 3,380 Bbls.±  
Total Pit Volume  
= 700 Cu. Yds

EOG RESOURCES, INC.  
RECLAMATION DIAGRAM FOR  
DUTCH LAKE #17-25H  
SECTION 25, T6N, R62W, 6th P.M.  
501' FNL 501' FWL

FIGURE #4  
SCALE: 1" = 60'  
DATE: 02-04-11  
DRAWN BY: K.O.



Access Road



APPROXIMATE ACREAGES  
UN-RECLAIMED = ± 1.547 ACRES

 RECLAIMED AREA

