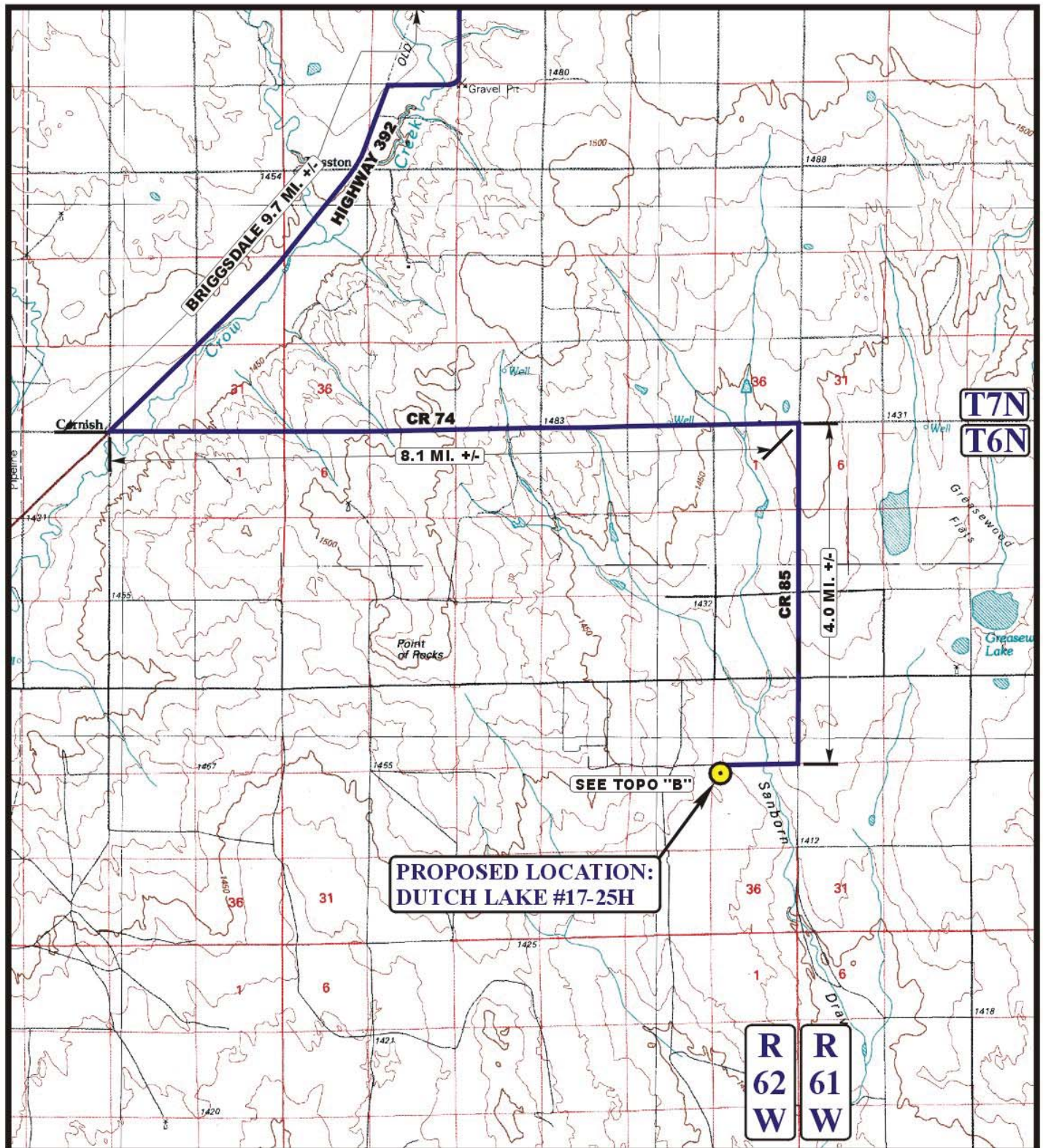


EOG RESOURCES, INC.
DUTCH LAKE #17-25H
SECTION 25, T6N, R62W, 6th P.M.

PROCEED IN A SOUTHERLY, THEN SOUTHWESTERLY DIRECTION FROM BRIGGSDALE, COLORADO ALONG HIGHWAY 392 APPROXIMATELY 9.7 MILES TO THE JUNCTION OF THIS ROAD AND COUNTY ROAD 74 TO THE EAST; TURN LEFT AND PROCEED IN AN EASTERLY DIRECTION APPROXIMATELY 8.1 MILES TO THE JUNCTION OF THIS ROAD AND COUNTY ROAD 85 TO THE SOUTH; TURN RIGHT AND PROCEED IN A SOUTHERLY DIRECTION APPROXIMATELY 4.0 MILES TO THE BEGINNING OF THE PROPOSED ACCESS TO THE WEST; FOLLOW ROAD FLAGS IN A WESTERLY DIRECTION APPROXIMATELY 4,860' TO THE PROPOSED LOCATION.

TOTAL DISTANCE FROM BRIGGSDALE, COLORADO TO THE PROPOSED WELL LOCATION IS APPROXIMATELY 22.7 MILES.



LEGEND:

 PROPOSED LOCATION



EOG RESOURCES, INC.

DUTCH LAKE #17-25H
SECTION 25, T6N, R62W, 6th P.M.
501' FNL 501' FWL



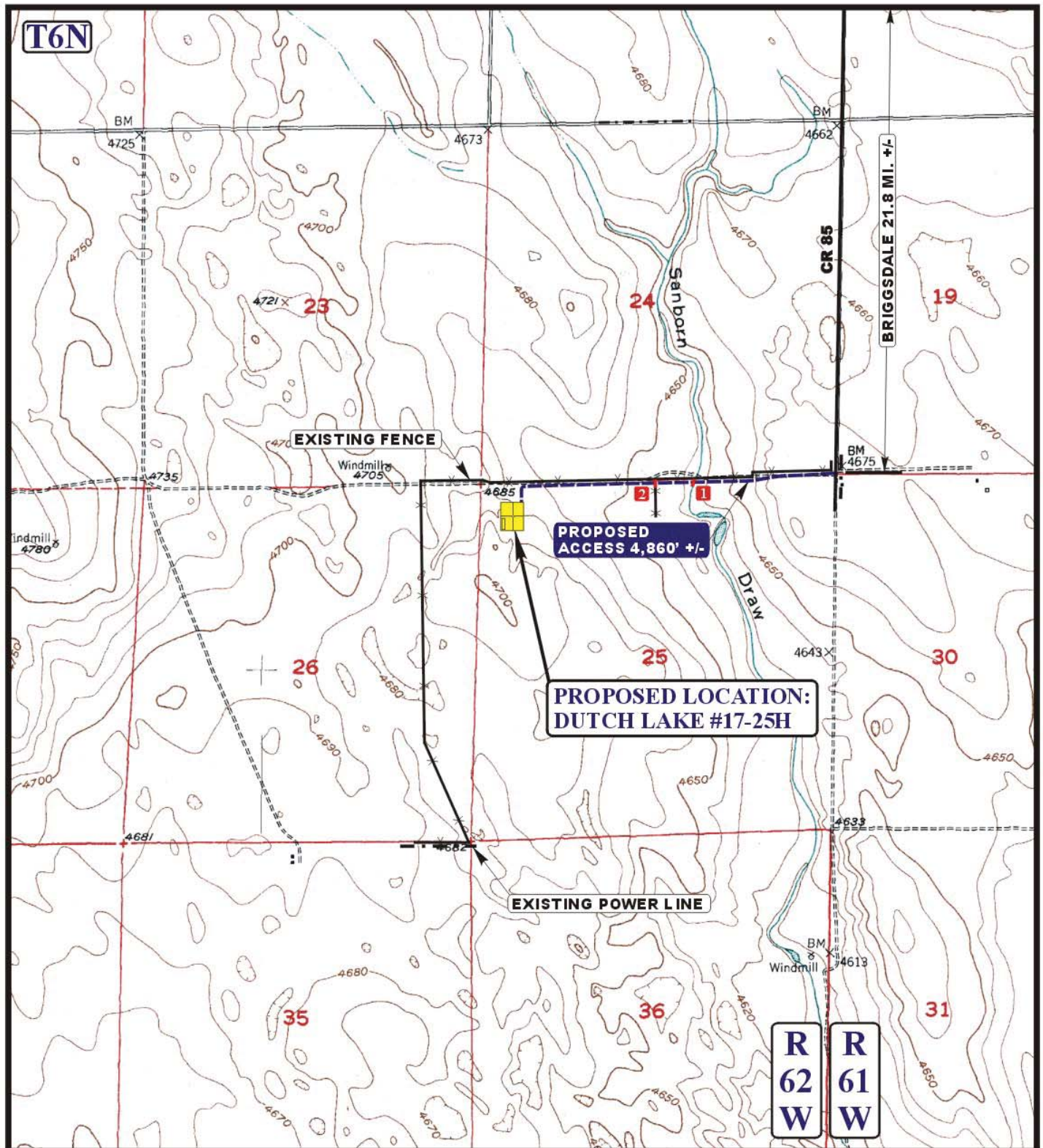
Uintah Engineering & Land Surveying
85 South 200 East Vernal, Utah 84078
(435) 789-1017 * FAX (435) 789-1813

ACCESS ROAD
MAP

02 04 11
MONTH DAY YEAR

SCALE: 1:100,000 DRAWN BY: C.A.G. REVISED: 00-00-00





LEGEND:

- EXISTING ROAD
- PROPOSED ACCESS ROAD
- EXISTING POWER LINE
- EXISTING FENCE
- 1 36" CMP REQUIRED
- 2 INSTALL CATTLE GUARD



Utah Engineering & Land Surveying
 85 South 200 East Vernal, Utah 84078
 (435) 789-1017 * FAX (435) 789-1813



EOG RESOURCES, INC.

DUTCH LAKE #17-25H
SECTION 25, T6N, R62W, 6th P.M.
501' FNL 501' FWL

ACCESS ROAD
 MAP

02 04 11
 MONTH DAY YEAR

SCALE: 1" = 2000' DRAWN BY: C.A.G. REVISED: 00-00-00

B
 TOPO