

EnCana OIL & GAS (USA) INC.
WELL PAD N22 496
LOCATED IN GARFIELD COUNTY, COLORADO
SECTION 22, T4S, R96W, 6th P.M.

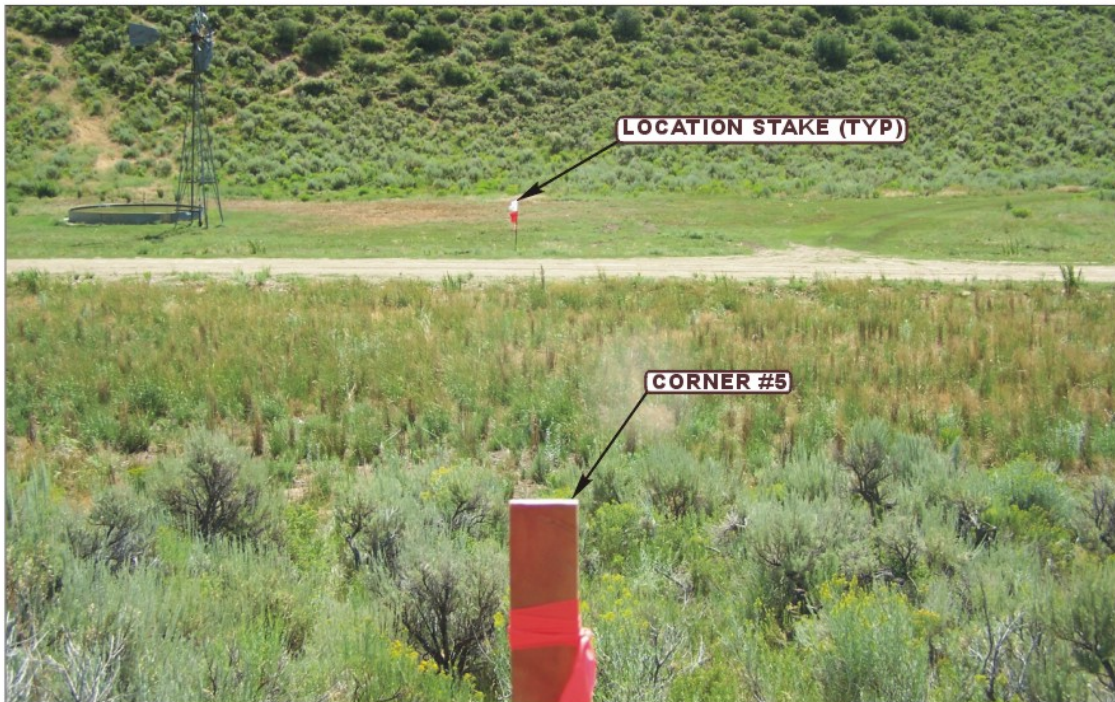


PHOTO: VIEW FROM CORNER #5 TO LOCATION STAKE

CAMERA ANGLE: SOUTHEASTERLY



PHOTO: VIEW OF EXISTING ACCESS

CAMERA ANGLE: NORTHERLY



UELS Uintah Engineering & Land Surveying
85 South 200 East Vernal, Utah 84078
(435) 789-1017 * FAX (435) 789-1813

LOCATION PHOTOS

11 16 10
MONTH DAY YEAR

PHOTO
P 1

TAKEN BY: B.H.

DRAWN BY: Z.L.

REVISED: 00-00-00

EnCana OIL & GAS (USA) INC.
WELL PAD N22 496
LOCATED IN GARFIELD COUNTY, COLORADO
SECTION 22, T4S, R96W, 6th P.M.



PHOTO: VIEW OF LOCATION STAKE

CAMERA ANGLE: NORTHERLY



PHOTO: VIEW OF LOCATION STAKE

CAMERA ANGLE: EASTERLY



UELS

Uintah Engineering & Land Surveying
85 South 200 East Vernal, Utah 84078
435-789-1017 FAX (435) 789-1813

LOCATION PHOTOS

11 16 10
MONTH DAY YEAR

PHOTO
P 2

TAKEN BY: B.H.

DRAWN BY: Z.L.

REVISED: 00-00-00

EnCana OIL & GAS (USA) INC.
WELL PAD N22 496
LOCATED IN GARFIELD COUNTY, COLORADO
SECTION 22, T4S, R96W, 6th P.M.



PHOTO: VIEW OF LOCATION STAKE

CAMERA ANGLE: SOUTHERLY



PHOTO: VIEW OF LOCATION STAKE

CAMERA ANGLE: WESTERLY



- Since 1964 -

U E L S Uintah Engineering & Land Surveying
85 South 200 East Vernal, Utah 84078
435-789-1017 FAX (435) 789-1813

LOCATION PHOTOS

11 16 10
MONTH DAY YEAR

PHOTO
P 3

TAKEN BY: B.H.

DRAWN BY: Z.L.

REVISED: 00-00-00