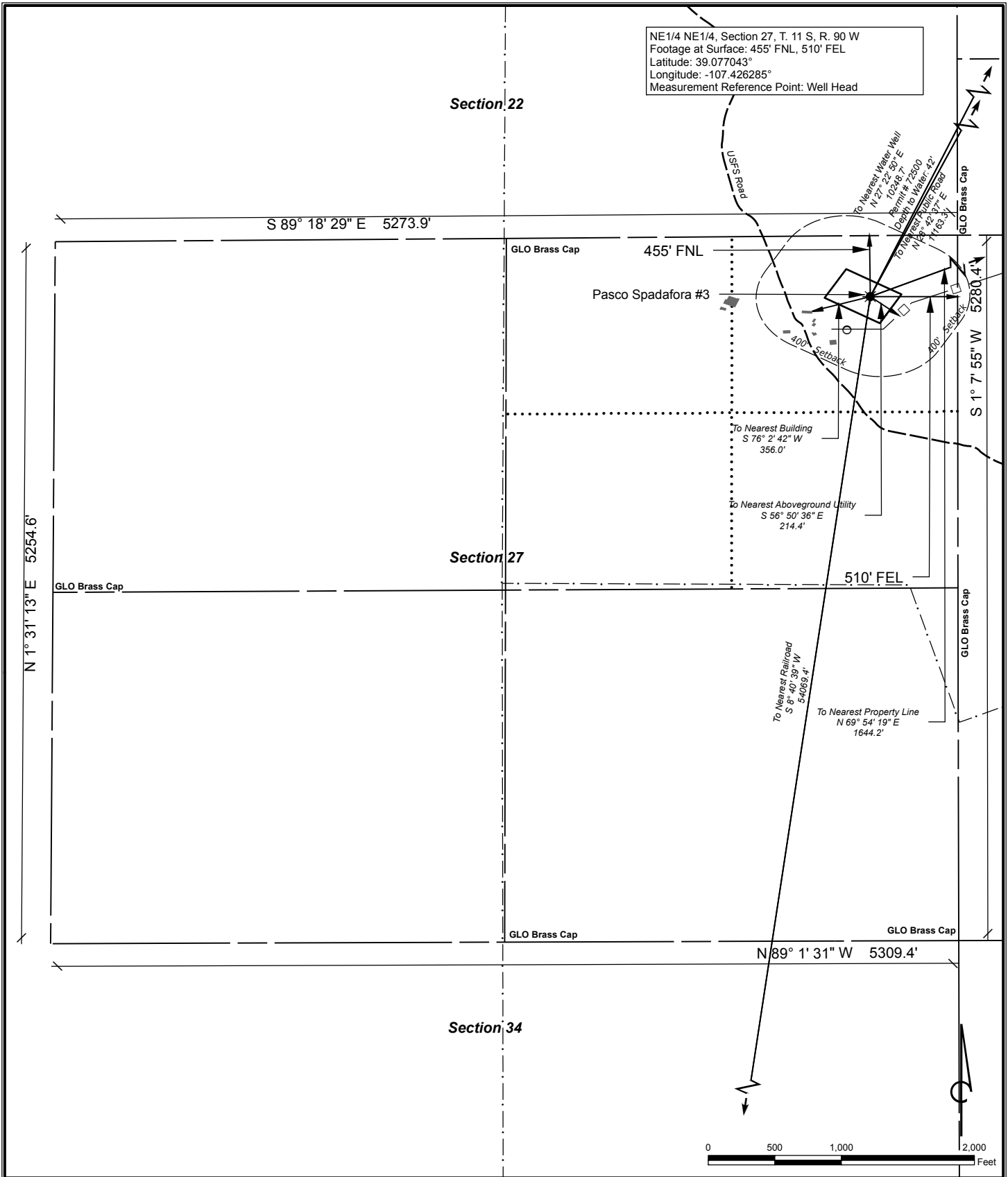



NE1/4 NE1/4, Section 27, T. 11 S, R. 90 W  
 Footage at Surface: 455' FNL, 510' FEL  
 Latitude: 39.077043°  
 Longitude: -107.426285°  
 Measurement Reference Point: Well Head



Visible Improvements to Well Head		
Description	Bearing	Distance (Ft.)
Building	S 76° 2' 42" W	356
Public Road	N 28° 42' 37" E	11,163
Railroad	S 8° 40' 39" W	54,069
Aboveground Utility	S 56° 50' 36" E	214
Property Line	N 69° 54' 19" E	1,644
Water Well	N 27° 22' 50" E	10,249

**Current Land Use:**  
 CROP LAND: Irrigated  
 EXISTING WELL PAD

NAD 83 Datum  
 SCALE: 1" = 1,000'  
 DATE: 01.08.2011



**SG Interests**  
 PO Box 26  
 Montrose, CO 81402  
 970-252-0696

**Bull Mountain Unit**  
 T. 11 S, R. 90 W, Section 27

**Pasco Spadafora #3**  
**LOCATION**