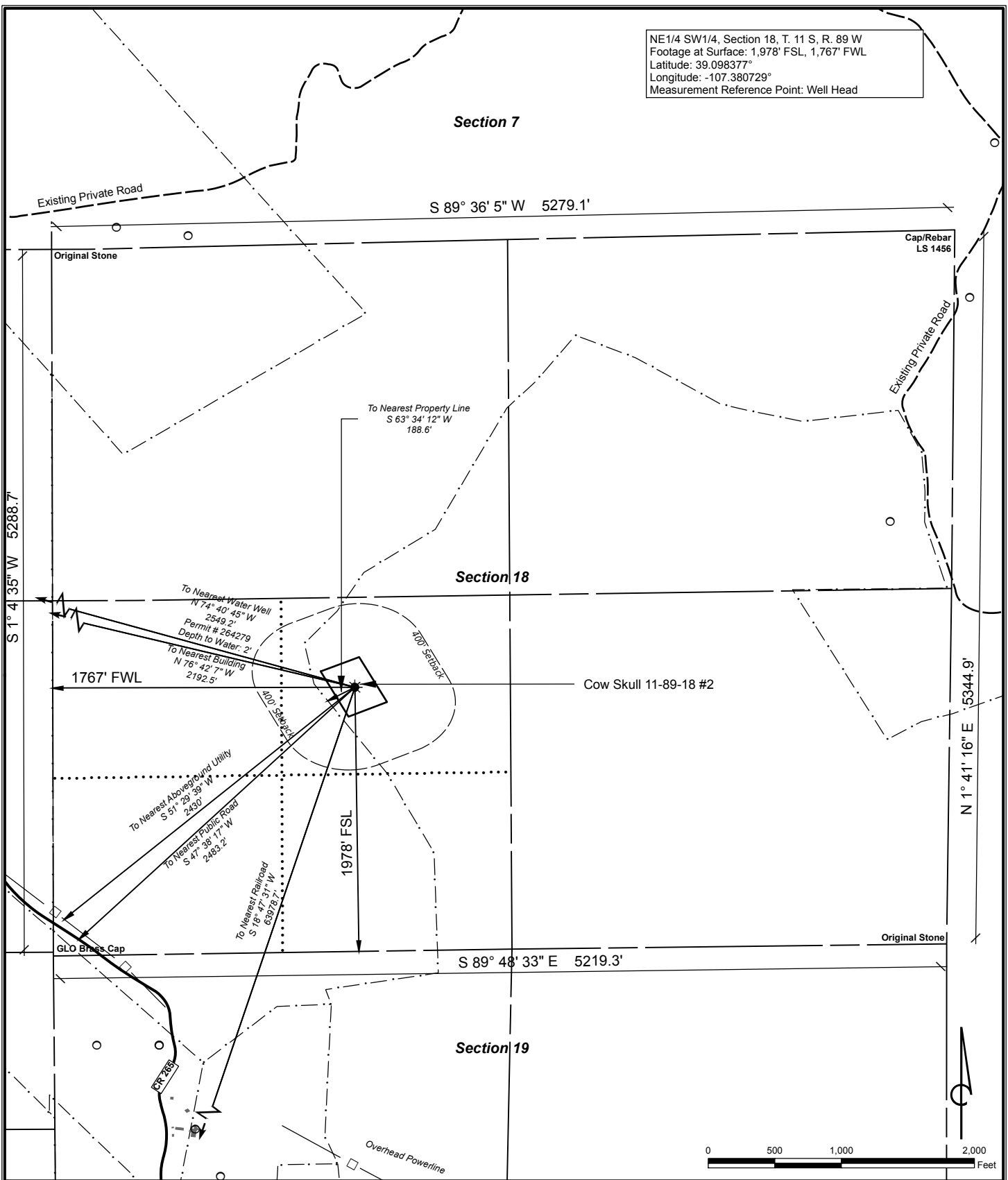



NE1/4 SW1/4, Section 18, T. 11 S, R. 89 W  
Footage at Surface: 1,978' FSL, 1,767' FWL  
Latitude: 39.098377°  
Longitude: -107.380729°  
Measurement Reference Point: Well Head



Visible Improvements to Well Head		
Description	Bearing	Distance (Ft.)
Building	N 76° 42' 7" W	2,193
Public Road	S 47° 38' 17" W	2,483
Railroad	S 18° 47' 31" W	63,979
Aboveground Utility	S 51° 29' 39" W	2,430
Property Line	S 63° 34' 12" W	189
Water Well	N 74° 40' 45" W	2,549

**Current Land Use:**  
CROP LAND: Irrigated  
EXISTING WELL PAD

NAD 83 Datum  
SCALE: 1" = 1,000'  
DATE: 01.08.2011



**SG Interests**  
PO Box 26  
Montrose, CO 81402  
970-252-0696

**Bull Mountain Unit**  
T. 11 S, R. 89 W, Section 18  
**Cow Skull 11-89-18 #2**  
**LOCATION**