
OXY GRAND JUNCTION EBUSINESS

**CC 697-08-23B
GRAND VALLEY
Garfield County , Colorado**

**Cement Surface Casing
04-Jan-2011**

Post Job Report

The Road to Excellence Starts with Safety

Sold To #: 344034	Ship To #: 2828735	Quote #:	Sales Order #: 7842732
Customer: OXY GRAND JUNCTION EBUSINESS	Customer Rep: Silva, Marco		
Well Name: CC	Well #: 697-08-23B	API/UWI #: 05-045-18353	
Field: GRAND VALLEY	City (SAP): PARACHUTE	County/Parish: Garfield	State: Colorado
Lat: N 39.536 deg. OR N 39 deg. 32 min. 10.046 secs.	Long: W 108.238 deg. OR W -109 deg. 45 min. 44.539 secs.		
Contractor: H&P Drilling	Rig/Platform Name/Num: H&P 330		
Job Purpose: Cement Surface Casing			
Well Type: Development Well	Job Type: Cement Surface Casing		
Sales Person: DUNNING, DUSTIN	Srvc Supervisor: HUGENTOBLE, LOGAN	MBU ID Emp #: 447333	

Job Personnel

HES Emp Name	Exp Hrs	Emp #	HES Emp Name	Exp Hrs	Emp #	HES Emp Name	Exp Hrs	Emp #
DANIEL, EVERETT Dean	41	337325	HOEFER, FREEMAN Dennis	41	369666	HUGENTOBLE, LOGAN Mark	41	447333
SLAUGHTER, JESSE Dean	41	454315	YOUNG, JEREMY R	41	418013			

Equipment

HES Unit #	Distance-1 way	HES Unit #	Distance-1 way	HES Unit #	Distance-1 way	HES Unit #	Distance-1 way
10001431	120 mile	10025041	120 mile	10744648C	120 mile	10804579	120 mile
10829463	120 mile	10989685	120 mile	10998508	120 mile	11006314	120 mile

Job Hours

Date	On Location Hours	Operating Hours	Date	On Location Hours	Operating Hours	Date	On Location Hours	Operating Hours
1/3/11	18	4	1/4/11	23	3			

TOTAL Total is the sum of each column separately

Job

Formation Name	Top	Bottom	Called Out	Date	Time	Time Zone
Formation Depth (MD)			On Location	03 - Jan - 2011	06:00	MST
Form Type	BHST		Job Started	03 - Jan - 2011	19:00	MST
Job depth MD	2718. ft	Job Depth TVD	2737. ft	Job Completed	04 - Jan - 2011	20:30
Water Depth		Wk Ht Above Floor	4. ft	Departed Loc	05 - Jan - 2011	01:30
Perforation Depth (MD)	From	To				

Well Data

Description	New / Used	Max pressure psig	Size in	ID in	Weight lbm/ft	Thread	Grade	Top MD ft	Bottom MD ft	Top TVD ft	Bottom TVD ft
14 3/4" Open Hole				14.75				.	2730.		
9 5/8" Surface Casing	Unknown		9.625	8.921	36.			.	2700.		

Sales/Rental/3rd Party (HES)

Description	Qty	Qty uom	Depth	Supplier
PLUG,CMTG,TOP,9 5/8,HWE,8.16 MIN/9.06 MA	1	EA		
R/A DENSOMETER W/CHART RECORDER,/JOB,ZI	1	JOB		
PORT. DATA ACQUIS. W/OPTICEM RT W/HES	1	EA		
ADC (AUTO DENSITY CTRL) SYS, /JOB,ZI	1	JOB		

Tools and Accessories

Type	Size	Qty	Make	Depth	Type	Size	Qty	Make	Depth	Type	Size	Qty	Make
Guide Shoe					Packer					Top Plug	9.625	1	HES
Float Shoe					Bridge Plug					Bottom Plug			
Float Collar					Retainer					SSR plug set			
Insert Float										Plug Container	9.625	1	HES
Stage Tool										Centralizers			

Miscellaneous Materials

Gelling Agt		Conc		Surfactant		Conc		Acid Type		Qty		Conc	%
Treatment Fld		Conc		Inhibitor		Conc		Sand Type		Size		Qty	

Fluid Data									
Stage/Plug #: 1									
Fluid #	Stage Type	Fluid Name	Qty	Qty uom	Mixing Density lbm/gal	Yield ft3/sk	Mix Fluid Gal/sk	Rate bbl/min	Total Mix Fluid Gal/sk
1	Water Spacer		20.00	bbl	8.33	.0	.0	.0	
2	Gel Spacer		20.00	bbl	.	.0	.0	.0	
3	Water Spacer		20.00	bbl	.	.0	.0	.0	
4	VersaCem Lead Cement	VERSACEM (TM) SYSTEM (452010)	800.0	sacks	12.3	2.33	12.62		12.62
	12.62 Gal	FRESH WATER							
5	VersaCem Tail Cement	VERSACEM (TM) SYSTEM (452010)	160.0	sacks	12.8	2.07	10.67		10.67
	10.67 Gal	FRESH WATER							
6	Displacement		206.00	bbl	.	.0	.0	.0	
7	Topout Cement	HALCEM (TM) SYSTEM (452986)	30.0	sacks	12.5	1.97	10.96		10.96
	10.96 Gal	FRESH WATER							

Calculated Values		Pressures		Volumes					
Displacement	206	Shut In: Instant		Lost Returns	0	Cement Slurry	416	Pad	
Top Of Cement	SURFACE	5 Min		Cement Returns	30	Actual Displacement	206	Treatment	
Frac Gradient		15 Min		Spacers	60	Load and Breakdown		Total Job	

Rates										
Circulating	5	Mixing		4	Displacement	5	Avg. Job	5		
Cement Left In Pipe	Amount	52.45 ft	Reason	Shoe Joint						
Frac Ring # 1 @	ID		Frac ring # 2 @	ID		Frac Ring # 3 @	ID		Frac Ring # 4 @	ID

The Information Stated Herein Is Correct	Customer Representative Signature
--	-----------------------------------

The Road to Excellence Starts with Safety

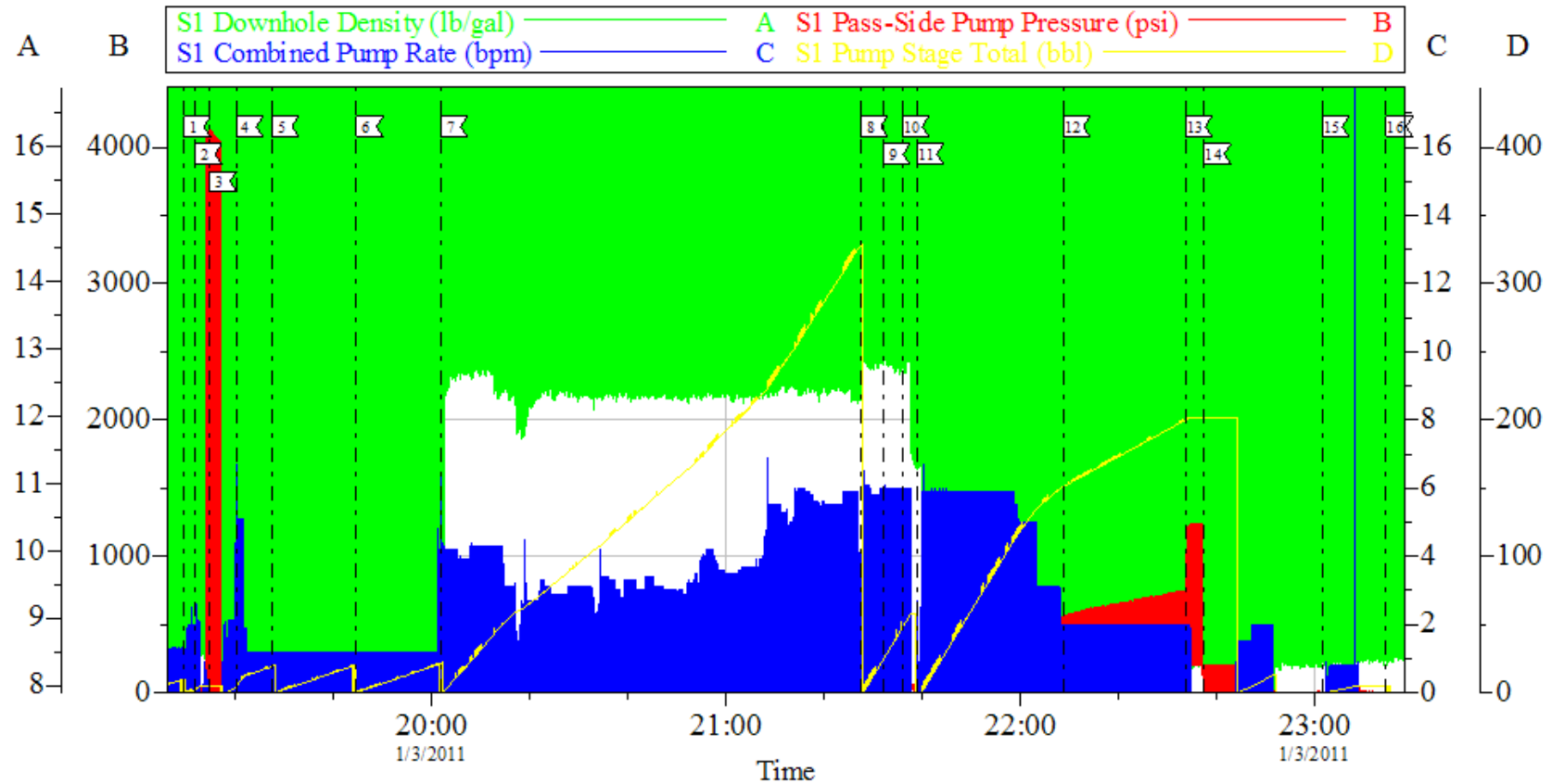
Sold To #: 344034	Ship To #: 2828735	Quote #:	Sales Order #: 7842732
Customer: OXY GRAND JUNCTION EBUSINESS		Customer Rep: Silva, Marco	
Well Name: CC	Well #: 697-08-23B	API/UWI #: 05-045-18353	
Field: GRAND VALLEY	City (SAP): PARACHUTE	County/Parish: Garfield	State: Colorado
Legal Description:			
Lat: N 39.536 deg. OR N 39 deg. 32 min. 10.046 secs.		Long: W 108.238 deg. OR W -109 deg. 45 min. 44.539 secs.	
Contractor: H&P Drilling		Rig/Platform Name/Num: H&P 330	
Job Purpose: Cement Surface Casing			Ticket Amount:
Well Type: Development Well		Job Type: Cement Surface Casing	
Sales Person: DUNNING, DUSTIN		Srv Supervisor: HUGENTOBLE, LOGAN	MBU ID Emp #: 447333

Activity Description	Date/Time	Cht #	Rate bbl/min	Volume bbl		Pressure psig		Comments
				Stage	Total	Tubing	Casing	
Call Out	01/03/2011 01:00							
Pre-Convoy Safety Meeting	01/03/2011 04:00							ALL HES EMPLOYEES
Arrive At Loc	01/03/2011 06:00							RIG STILL RUNNING CASING
Assessment Of Location Safety Meeting	01/03/2011 07:00							ALL HES EMPLOYEES
Rig-Up Equipment	01/03/2011 08:00							1 HT 400 PUMP TRUCK, 3 660 BULK TRUCK, 1 9.625 QUICK LATCH PLUG CONTAINER, 1 F450 P/U, 2 FIELD BINS
Pre-Job Safety Meeting	01/03/2011 18:30							ALL HES EMPLOYEES, RIG CREW, CO REP.
Start Job	01/03/2011 19:09							TD 2737', TP 2718', FC 2265', HOLE 14.75", MUD WT 9 PPG, 800 BBLS OF H2O ON LOCATION, WATER SAMPLE SUBMITTED.
Pump Water	01/03/2011 19:11		2	2			60.0	FILL LINES
Pressure Test	01/03/2011 19:14		0.5	0.5				NO LEAKS
Pump Spacer 1	01/03/2011 19:20		1	20			71.0	FRESH WATER, RIG HAD PROBLEMS PUMPING RETURNS HAD TO KEEP RATE AT 1 BBL
Pump Spacer	01/03/2011 19:27		1	20			81.0	PUMP GEL WATER SPACER
Pump Water	01/03/2011 19:44		1	20			78.0	PUMP WATER

Activity Description	Date/Time	Cht #	Rate bbl/ min	Volume bbl		Pressure psig		Comments
				Stage	Total	Tubing	Casing	
Pump Lead Cement	01/03/2011 20:01		5	357			270.0	800 SKS VARICEM CCMT TO BE MIXED AT 12.3 PPG, 2.33 YIELD, 12.62 GAL/SK, CMT TO BE WEIGHED VIA PRESSURE BALANCED MUD SCALES. WET AND DRY SAMPLES SUBMITTED.DID NOT USE 270 SKS THAT ALREADY HERE PER MARCO
Pump Tail Cement	01/03/2011 21:27		6	59			315.0	160 SKS VARICEM CCMT TO BE MIXED AT 12.8 PPG, 2.07 YIELD, 10.67 GAL/SK, CMT TO BE WEIGHED VIA PRESSURE BALANCED MUD SCALES. WET AND DRY SAMPLES SUBMITTED.
Shutdown	01/03/2011 21:32							FOR NO MORE THEN 5 MINUTES,
Drop Plug	01/03/2011 21:35							PLUG LAUNCH
Pump Displacement	01/03/2011 21:38		6	206			541.0	FRESH WATER, GOOD RETURNS ENTIRE JOB RECIEVED 30 BBLS TO SURFACE
Slow Rate	01/03/2011 22:08		2				733.0	10 BBLS PRIOR TO CALCULATED DISPLACEMENT, SLOWED RATE AT 140 GONE PER MARCO
Bump Plug	01/03/2011 22:33						1234. 0	PLUG LANDED HOLD FOR TWO MINUTES
Check Floats	01/03/2011 22:37							FLOATS HOLDING, NO ANNULAR FLOW 1.5 BBLS BACK
Pump Spacer	01/03/2011 23:01		0.8	10			78.0	PUMPED 10BBLS SUGAR WATER THROUGH PARASITE STRING
Activity Description	Date/Time	Cht #	Rate bbl/ min	Volume bbl		Pressure psig		Comments
				Stage	Total	Tubing	Casing	

End Job	01/03/2011 23:14							THANK YOU FOR USING HES FROM LOGAN HUGENTOBLE AND CREW.
Pump Cement	01/04/2011 01:00		1.5	20		34.0		DID NOT TAG CEMENT. PUMPED 20 BBLs CEMENT, GOT 3 BBLs TO SURFACE. CEMENT FELL BACK. WAITED 2 HOURS TO TAG AGAIN. USED LEFT OVER TOP OUT CEMENT FROM RIG 272 PER MARCO
Pump Cement	01/04/2011 04:00		1.5	20		39.0		DID NOT TAG CEMENT. PUMPED 20 BBLs CEMENT, GOT 2 BBLs TO SURFACE. CEMENT FELL BACK. WAITED 2 HOURS TO TAG AGAIN. USED LAST OF CEMENT, MARCO ORDERED 350SKs OF TOP OUT CEMENT
Pump Cement	01/04/2011 19:55		1.5	10		31.0		TAGGED CEMENT AT 75 FT. PUMPED 8 BBLs CEMENT, GOT 1 BBL TO SURFACE. CEMENT DID NOT FALL BACK WAITED 2 HOURS TO TAG AGAIN. TAGGED CEMENT AT 6". ALSO PUMPED 2 BBLs CEMENT ON DIFFERENT WELL THAT CEMENT WAS TAGGED AT 25'. GOT CEMENT TO SURFACE AND STAYED.
Post-Job Safety Meeting (Pre Rig-Down)	01/04/2011 22:00							ALL HES EMPLOYEES
Rig-Down Equipment	01/04/2011 22:15							SAFELY
Pre-Convoy Safety Meeting	01/05/2011 01:00							ALL HES EMPLOYEES
Crew Leave Location	01/05/2011 01:15							SITE WAS AS CLEAN AS WHEN WE ARRIVED

OXY SURFACE CASING

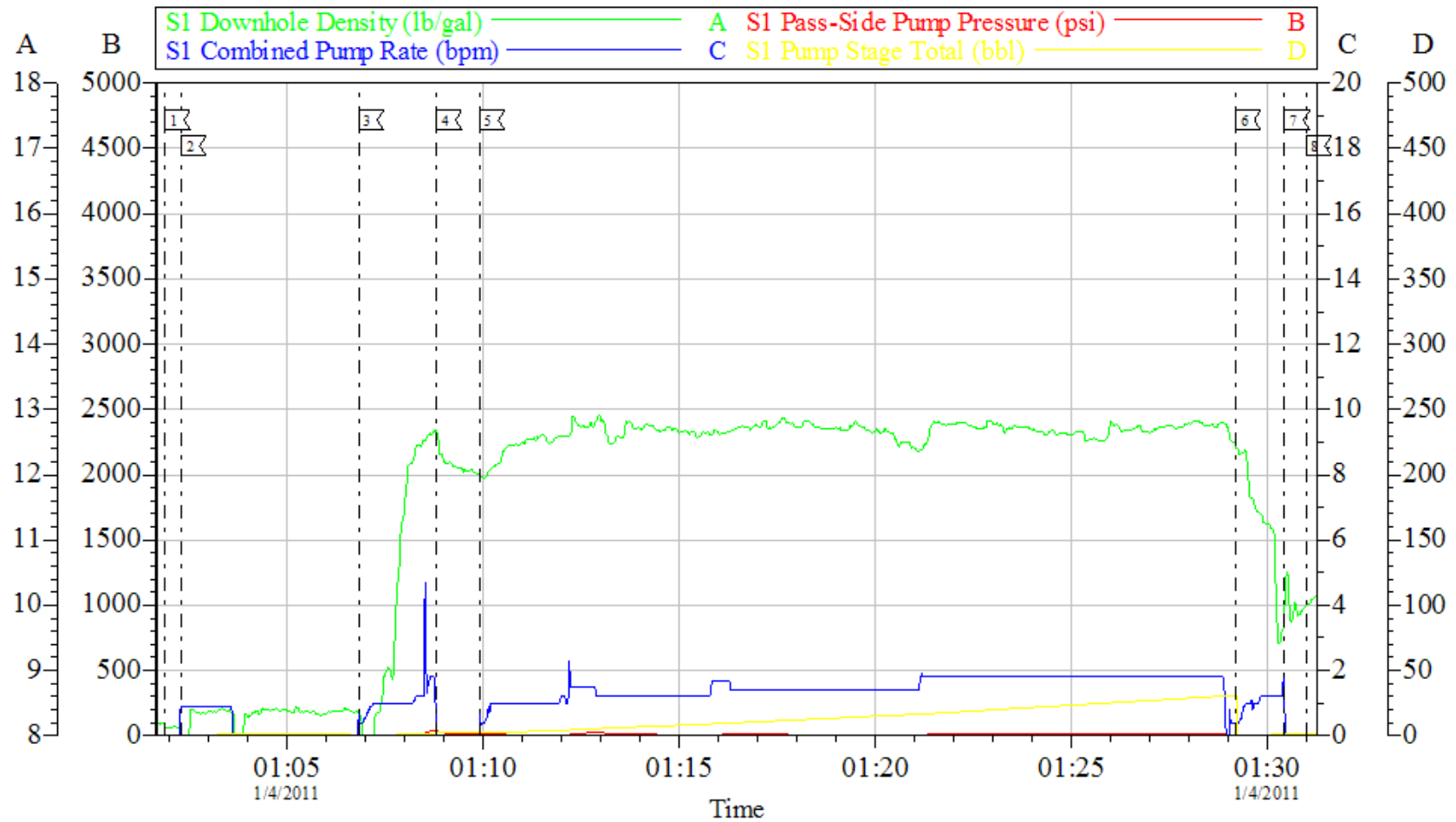


Local Event Log			
1	START JOB	19:09:31	2
2	PRIME LINES	19:11:48	3
3	PRESSURE TEST	19:14:50	4
4	PUMP H2O SPACER	19:20:11	5
5	PUMP GEL WATER SPACER	19:27:29	6
6	PUMP H2O SPACER	19:44:40	7
7	PUMP LEAD CEMENT	20:01:51	8
8	PUMP TAIL CEMENT	21:27:31	9
9	SHUTDOWN	21:32:06	10
10	DROP PLUG	21:35:57	11
11	PUMP DISPLACEMENT	21:38:59	12
12	SLOW RATE	22:08:49	13
13	BUMP PLUG	22:33:39	14
14	CHECK FLOATS	22:37:31	15
15	PUMP SUGAR WATER	23:01:34	16
16	END JOB	23:14:35	

Customer: OXY	Job Date: 03-Jan-2011	Sales Order #: 7842732
Well Description: CC 697-08-23B	Job Type: SURFACE	ADC Used: YES
Company Rep: MARCO SILVA	Cement Supervisor: LOGAN HUGENTOBLE	Elite #6 / Operator: DEAN DANIEL

OptiCem v6.4.10
03-Jan-11 23:53

OXY TOP OUT #1

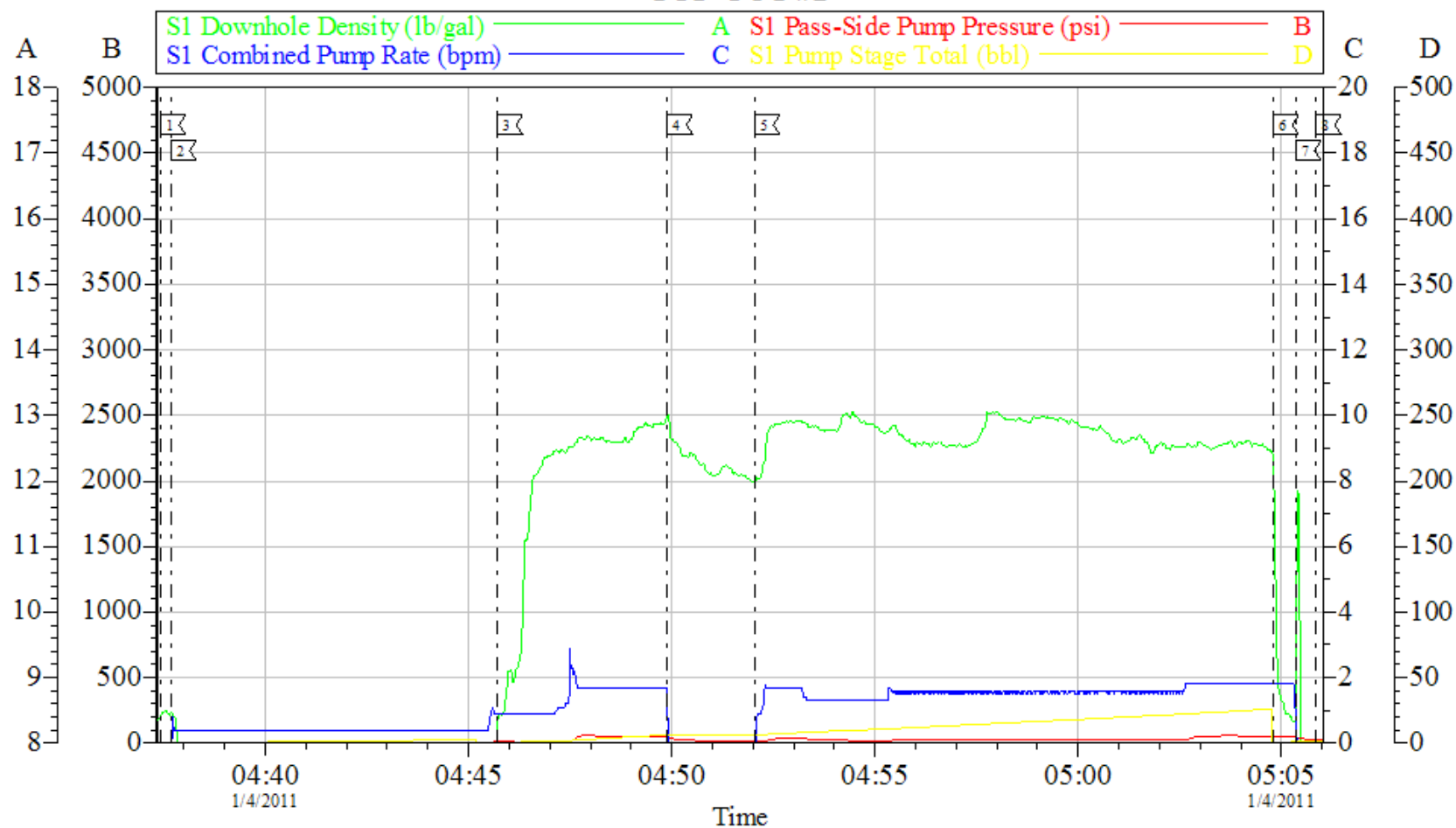


Local Event Log					
1 START JOB	01:01:53	2 PUMP H2O AHEAD	01:02:18	3 PUMP TOP OUT CEMENT	01:06:49
4 SHUTDOWN	01:08:49	5 RESUME PUMPING	01:09:55	6 PUMP H2O BEHIND	01:29:12
7 SHUTDOWN	01:30:27	8 END JOB	01:31:00		

Customer: OXY	Job Date: 04-Jan-2011	Sales Order #: 7842732
Well Description: CC 697-08-23B	Job Type: TOP OUT	ADC Used: YES
Company Rep: MARCO SILVA	Cement Supervisor: LOGAN HUGENTOBLE	Elite #6 / Operator: DEAN DANIEL

OptiCem v6.4.10
04-Jan-11 01:37

OXY TOP OUT #2



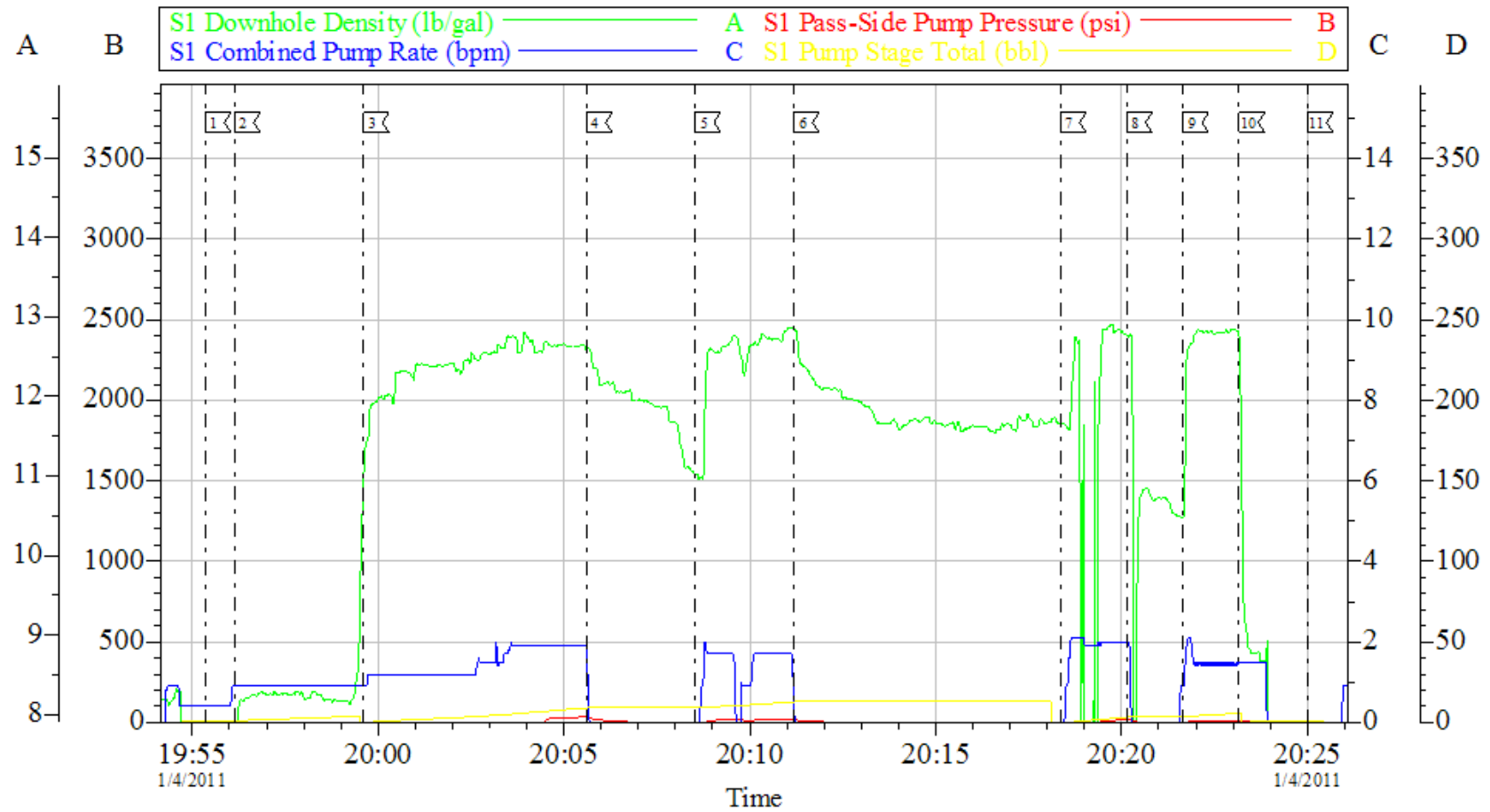
Customer: OXY
Well Description: CC 697-08-23B
Company Rep: MARCO SILVA

Job Date: 04-Jan-2011
Job Type: TOP OUT
Cement Supervisor: LOGAN HUGENTOBLE

Sales Order #: 7842732
ADC Used: YES
Elite #6 / Operator: JESSE SLAUGHTER

OptiCem v6.4.10
04-Jan-11 05:17

OXY TOP OUT #3



Local Event Log					
1	START JOB	19:55:21	2	PUMP H2O AHEAD	19:56:08
3	PUMP TOP OUT CEMENT	19:59:36	4	SHUTDOWN	20:05:36
5	RESUME PUMPING	20:08:31	6	SHUTDOWN	20:11:10
7	RESUME PUMPING	20:18:21	8	SHUTDOWN	20:20:08
9	RESUME PUMPING	20:21:39	10	PUMP H2O BEHIND	20:23:09
11	END JOB	20:25:00			

Customer: OXY	Job Date: 04-Jan-2011	Sales Order #: 7842732
Well Description: CC 697-08-23B	Job Type: TOP OUT	ADC Used: YES
Company Rep: MARCO SILVA	Cement Supervisor: LOGAN HUGENTOBLE	Elite # 6/ Operator: JEREMY YOUNG

OptiCem v6.4.10
04-Jan-11 21:35