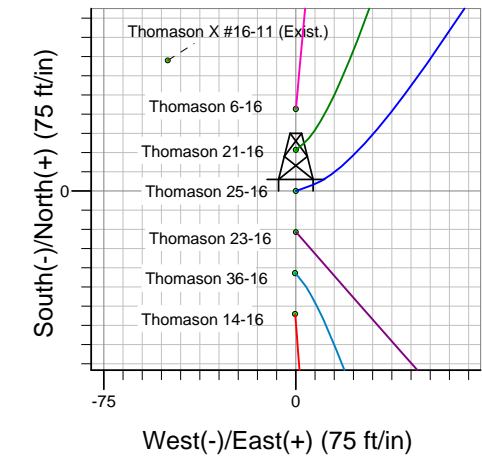
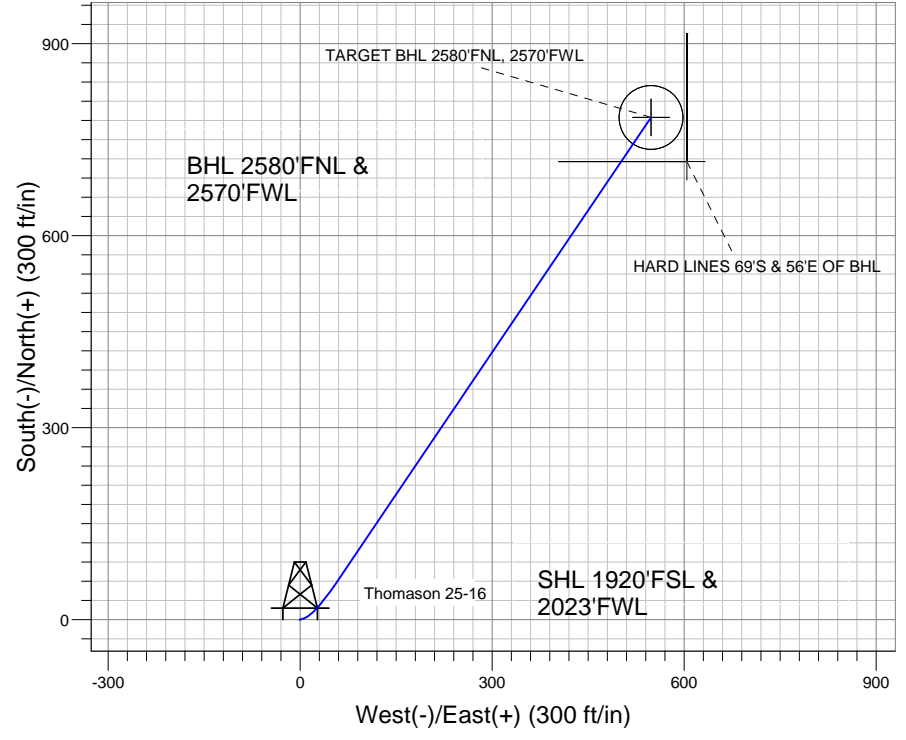
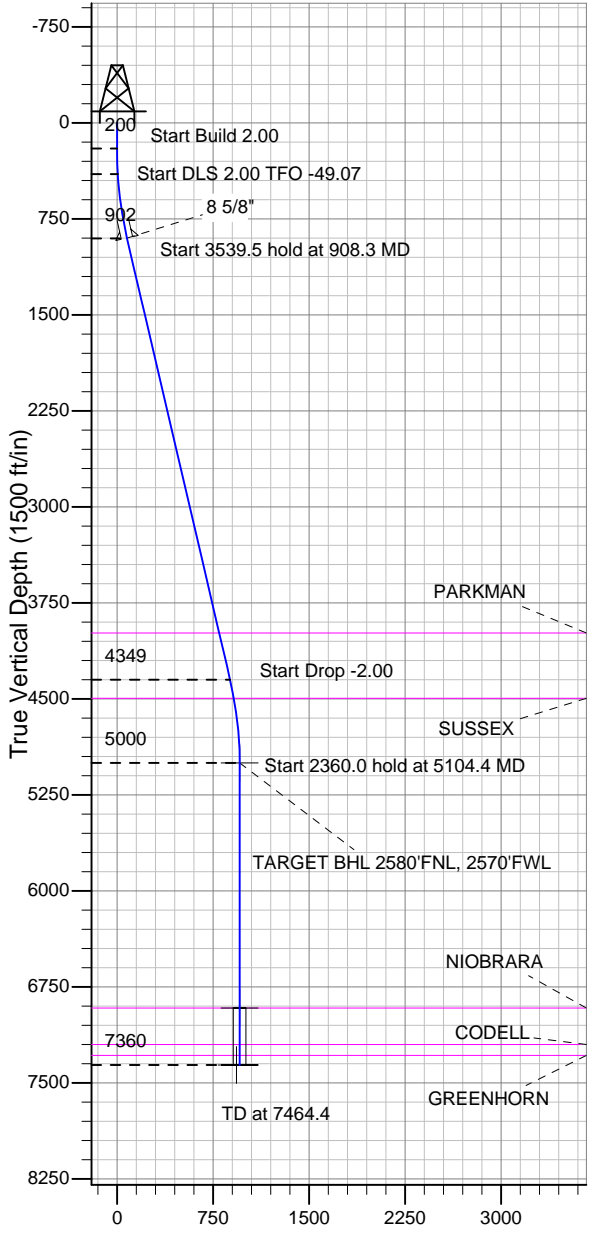


## Well Name: Thomason 25-16

Surface Location: Thomason 11-16 Pad Sec.16-T2N-R65W  
 North American Datum 1983 , US State Plane 1983 , Colorado Northern Zone  
 Ground Elevation: 4885.0

+N/-S +E/-W Northing Easting Latitude Longitude Slot  
 0.0 0.0 1293739.52 3231729.37 40.136736 -104.671175  
 Original Well Elev WELL @ 4899.0ft (Original Well Elev)

## Anadarko, Weld County CO



FORMATION TOP DETAILS		
TVDPATH	MDPATH	FORMATION
3985.0	4073.9	PARKMAN
4495.0	4596.8	SUSSEX
6915.0	7019.4	NIOBRARA
7200.0	7304.4	CODELL
7285.0	7389.4	GREENHORN

Azimuths to True North  
 Magnetic North: 8.83°

Magnetic Field  
 Strength: 53033.2snT  
 Dip Angle: 66.86°  
 Date: 3/1/2011  
 Model: IGRF2010

Well Name: Thomason 25-16 Lat/Long: 40.136736 -104.671175

### WELLBORE TARGET DETAILS (LAT/LONG)

Name	TVD	+N/-S	+E/-W	Latitude	Longitude	Shape
TARGET BHL 2580'FNL, 2570'FWL	5000.0	784.7	548.3	40.138890	-104.669214	Point
TARGET CIRCLE 2580'FNL, 2570'FWL	6915.0	784.7	548.3	40.138890	-104.669214	Circle (Radius: 50.0)
HARD LINES 69'S & 56'E OF BHL	7360.0	715.7	604.3	40.138701	-104.669014	Polygon

### SECTION DETAILS

Sec	MD	Inc	Azi	TVD	+N/-S	+E/-W	DLeg	TFace	VSec	Target
1	0.0	0.00	0.00	0.0	0.0	0.0	0.00	0.00	0.0	
2	200.0	0.00	0.00	200.0	0.0	0.0	0.00	0.00	0.0	
3	400.0	4.00	70.00	399.8	2.4	6.6	2.00	70.00	5.7	
4	908.3	13.13	34.07	902.1	56.4	55.7	2.00	-49.07	78.2	
5	4447.7	13.13	34.07	4349.0	722.6	506.3	0.00	0.00	882.3	
6	5104.4	0.00	0.00	5000.0	784.7	548.3	2.00	180.00	957.3	TARGET BHL 2580'FNL, 2570'FWL
7	7464.4	0.00	0.00	7360.0	784.7	548.3	0.00	0.00	957.3	

### CASING DETAILS

TVD	MD	Name	Size
900.0	906.1	8 5/8"	8-5/8

Thomason 11-16 Pad Sec.16-T2N-R65W  
 Thomason 25-16  
 Plan #1 (3-01-11)  
 14:44, March 10 2011



## Directional

# Anadarko, Weld County CO

SEC.16-T2N-R65W

Thomason 11-16 Pad Sec.16-T2N-R65W

Thomason 25-16

Wellbore #1

Plan: Plan #1 (3-01-11)

## Standard Planning Report

10 March, 2011



<b>Database:</b>	Landmark	<b>Local Co-ordinate Reference:</b>	Well Thomason 25-16
<b>Company:</b>	Anadarko, Weld County CO	<b>TVD Reference:</b>	WELL @ 4899.0ft (Original Well Elev)
<b>Project:</b>	SEC.16-T2N-R65W	<b>MD Reference:</b>	WELL @ 4899.0ft (Original Well Elev)
<b>Site:</b>	Thomason 11-16 Pad Sec.16-T2N-R65W	<b>North Reference:</b>	True
<b>Well:</b>	Thomason 25-16	<b>Survey Calculation Method:</b>	Minimum Curvature
<b>Wellbore:</b>	Wellbore #1		
<b>Design:</b>	Plan #1 (3-01-11)		

<b>Project</b>	SEC.16-T2N-R65W, Weld County, Colorado		
<b>Map System:</b>	US State Plane 1983	<b>System Datum:</b>	Mean Sea Level
<b>Geo Datum:</b>	North American Datum 1983		Using Well Reference Point
<b>Map Zone:</b>	Colorado Northern Zone		Using geodetic scale factor

<b>Site</b>	Thomason 11-16 Pad Sec.16-T2N-R65W				
<b>Site Position:</b>		<b>Northing:</b>	1,293,771.59 ft	<b>Latitude:</b>	40.136824
<b>From:</b>	Lat/Long	<b>Easting:</b>	3,231,729.07 ft	<b>Longitude:</b>	-104.671175
<b>Position Uncertainty:</b>	0.0 ft	<b>Slot Radius:</b>	"	<b>Grid Convergence:</b>	0.54 °

<b>Well</b>	Thomason 25-16					
<b>Well Position</b>	<b>+N-S</b>	-32.1 ft	<b>Northing:</b>	1,293,739.52 ft	<b>Latitude:</b>	40.136736
	<b>+E-W</b>	0.0 ft	<b>Easting:</b>	3,231,729.37 ft	<b>Longitude:</b>	-104.671175
<b>Position Uncertainty</b>		0.0 ft	<b>Wellhead Elevation:</b>	ft	<b>Ground Level:</b>	4,885.0 ft

<b>Wellbore</b>	Wellbore #1				
<b>Magnetics</b>	<b>Model Name</b>	<b>Sample Date</b>	<b>Declination (°)</b>	<b>Dip Angle (°)</b>	<b>Field Strength (nT)</b>
	IGRF2010	3/1/2011	8.83	66.86	53,033

<b>Design</b>	Plan #1 (3-01-11)			
<b>Audit Notes:</b>				
<b>Version:</b>	<b>Phase:</b>	PROTOTYPE	<b>Tie On Depth:</b>	0.0
<b>Vertical Section:</b>	<b>Depth From (TVD) (ft)</b>	<b>+N-S (ft)</b>	<b>+E-W (ft)</b>	<b>Direction (°)</b>
	0.0	0.0	0.0	34.94

<b>Plan Sections</b>										
Measured Depth (ft)	Inclination (°)	Azimuth (°)	Vertical Depth (ft)	+N-S (ft)	+E-W (ft)	Dogleg Rate (°/100ft)	Build Rate (°/100ft)	Turn Rate (°/100ft)	TFO (°)	Target
0.0	0.00	0.00	0.0	0.0	0.0	0.00	0.00	0.00	0.00	
200.0	0.00	0.00	200.0	0.0	0.0	0.00	0.00	0.00	0.00	
400.0	4.00	70.00	399.8	2.4	6.6	2.00	2.00	0.00	70.00	
908.3	13.13	34.07	902.1	56.4	55.7	2.00	1.80	-7.07	-49.07	
4,447.7	13.13	34.07	4,349.0	722.6	506.3	0.00	0.00	0.00	0.00	
5,104.4	0.00	0.00	5,000.0	784.7	548.3	2.00	-2.00	0.00	180.00	TARGET BHL 258C
7,464.4	0.00	0.00	7,360.0	784.7	548.3	0.00	0.00	0.00	0.00	

<b>Database:</b>	Landmark	<b>Local Co-ordinate Reference:</b>	Well Thomason 25-16
<b>Company:</b>	Anadarko, Weld County CO	<b>TVD Reference:</b>	WELL @ 4899.0ft (Original Well Elev)
<b>Project:</b>	SEC.16-T2N-R65W	<b>MD Reference:</b>	WELL @ 4899.0ft (Original Well Elev)
<b>Site:</b>	Thomason 11-16 Pad Sec.16-T2N-R65W	<b>North Reference:</b>	True
<b>Well:</b>	Thomason 25-16	<b>Survey Calculation Method:</b>	Minimum Curvature
<b>Wellbore:</b>	Wellbore #1		
<b>Design:</b>	Plan #1 (3-01-11)		

Planned Survey									
Measured Depth (ft)	Inclination (°)	Azimuth (°)	Vertical Depth (ft)	+N/-S (ft)	+E/-W (ft)	Vertical Section (ft)	Dogleg Rate (°/100ft)	Build Rate (°/100ft)	Turn Rate (°/100ft)
0.0	0.00	0.00	0.0	0.0	0.0	0.0	0.00	0.00	0.00
40.0	0.00	0.00	40.0	0.0	0.0	0.0	0.00	0.00	0.00
80.0	0.00	0.00	80.0	0.0	0.0	0.0	0.00	0.00	0.00
120.0	0.00	0.00	120.0	0.0	0.0	0.0	0.00	0.00	0.00
160.0	0.00	0.00	160.0	0.0	0.0	0.0	0.00	0.00	0.00
200.0	0.00	0.00	200.0	0.0	0.0	0.0	0.00	0.00	0.00
240.0	0.80	70.00	240.0	0.1	0.3	0.2	2.00	2.00	0.00
280.0	1.60	70.00	280.0	0.4	1.0	0.9	2.00	2.00	0.00
320.0	2.40	70.00	320.0	0.9	2.4	2.1	2.00	2.00	0.00
360.0	3.20	70.00	359.9	1.5	4.2	3.7	2.00	2.00	0.00
400.0	4.00	70.00	399.8	2.4	6.6	5.7	2.00	2.00	0.00
440.0	4.56	62.38	439.7	3.6	9.3	8.3	2.00	1.41	-19.04
480.0	5.19	56.52	479.6	5.3	12.2	11.4	2.00	1.57	-14.67
520.0	5.86	51.95	519.4	7.6	15.3	15.0	2.00	1.67	-11.42
560.0	6.56	48.33	559.2	10.4	18.6	19.2	2.00	1.75	-9.05
600.0	7.28	45.41	598.9	13.7	22.1	23.9	2.00	1.80	-7.29
640.0	8.01	43.02	638.5	17.5	25.8	29.1	2.00	1.84	-5.97
680.0	8.76	41.04	678.1	21.8	29.7	34.9	2.00	1.86	-4.97
720.0	9.51	39.36	717.6	26.7	33.8	41.2	2.00	1.89	-4.19
760.0	10.27	37.93	757.0	32.0	38.1	48.1	2.00	1.90	-3.58
800.0	11.04	36.70	796.3	37.9	42.6	55.5	2.00	1.92	-3.09
840.0	11.81	35.62	835.5	44.3	47.3	63.4	2.00	1.93	-2.69
880.0	12.59	34.67	874.6	51.2	52.1	71.9	2.00	1.94	-2.36
906.1	13.09	34.12	900.0	56.0	55.4	77.7	2.00	1.94	-2.14
<b>8 5/8"</b>									
908.3	13.13	34.07	902.1	56.4	55.7	78.2	2.00	1.95	-2.05
920.0	13.13	34.07	913.6	58.6	57.2	80.8	0.00	0.00	0.00
960.0	13.13	34.07	952.5	66.2	62.3	89.9	0.00	0.00	0.00
1,000.0	13.13	34.07	991.5	73.7	67.4	99.0	0.00	0.00	0.00
1,040.0	13.13	34.07	1,030.4	81.2	72.5	108.1	0.00	0.00	0.00
1,080.0	13.13	34.07	1,069.4	88.8	77.6	117.2	0.00	0.00	0.00
1,120.0	13.13	34.07	1,108.3	96.3	82.7	126.3	0.00	0.00	0.00
1,160.0	13.13	34.07	1,147.3	103.8	87.7	135.4	0.00	0.00	0.00
1,200.0	13.13	34.07	1,186.3	111.3	92.8	144.4	0.00	0.00	0.00
1,240.0	13.13	34.07	1,225.2	118.9	97.9	153.5	0.00	0.00	0.00
1,280.0	13.13	34.07	1,264.2	126.4	103.0	162.6	0.00	0.00	0.00
1,320.0	13.13	34.07	1,303.1	133.9	108.1	171.7	0.00	0.00	0.00
1,360.0	13.13	34.07	1,342.1	141.5	113.2	180.8	0.00	0.00	0.00
1,400.0	13.13	34.07	1,381.0	149.0	118.3	189.9	0.00	0.00	0.00
1,440.0	13.13	34.07	1,420.0	156.5	123.4	199.0	0.00	0.00	0.00
1,480.0	13.13	34.07	1,458.9	164.0	128.5	208.1	0.00	0.00	0.00
1,520.0	13.13	34.07	1,497.9	171.6	133.6	217.1	0.00	0.00	0.00
1,560.0	13.13	34.07	1,536.8	179.1	138.7	226.2	0.00	0.00	0.00
1,600.0	13.13	34.07	1,575.8	186.6	143.8	235.3	0.00	0.00	0.00
1,640.0	13.13	34.07	1,614.7	194.2	148.9	244.4	0.00	0.00	0.00
1,680.0	13.13	34.07	1,653.7	201.7	153.9	253.5	0.00	0.00	0.00
1,720.0	13.13	34.07	1,692.7	209.2	159.0	262.6	0.00	0.00	0.00
1,760.0	13.13	34.07	1,731.6	216.7	164.1	271.7	0.00	0.00	0.00
1,800.0	13.13	34.07	1,770.6	224.3	169.2	280.8	0.00	0.00	0.00
1,840.0	13.13	34.07	1,809.5	231.8	174.3	289.9	0.00	0.00	0.00
1,880.0	13.13	34.07	1,848.5	239.3	179.4	298.9	0.00	0.00	0.00
1,920.0	13.13	34.07	1,887.4	246.9	184.5	308.0	0.00	0.00	0.00
1,960.0	13.13	34.07	1,926.4	254.4	189.6	317.1	0.00	0.00	0.00
2,000.0	13.13	34.07	1,965.3	261.9	194.7	326.2	0.00	0.00	0.00

<b>Database:</b>	Landmark	<b>Local Co-ordinate Reference:</b>	Well Thomason 25-16
<b>Company:</b>	Anadarko, Weld County CO	<b>TVD Reference:</b>	WELL @ 4899.0ft (Original Well Elev)
<b>Project:</b>	SEC.16-T2N-R65W	<b>MD Reference:</b>	WELL @ 4899.0ft (Original Well Elev)
<b>Site:</b>	Thomason 11-16 Pad Sec.16-T2N-R65W	<b>North Reference:</b>	True
<b>Well:</b>	Thomason 25-16	<b>Survey Calculation Method:</b>	Minimum Curvature
<b>Wellbore:</b>	Wellbore #1		
<b>Design:</b>	Plan #1 (3-01-11)		

Planned Survey									
Measured Depth (ft)	Inclination (°)	Azimuth (°)	Vertical Depth (ft)	+N/-S (ft)	+E/-W (ft)	Vertical Section (ft)	Dogleg Rate (°/100ft)	Build Rate (°/100ft)	Turn Rate (°/100ft)
2,040.0	13.13	34.07	2,004.3	269.4	199.8	335.3	0.00	0.00	0.00
2,080.0	13.13	34.07	2,043.2	277.0	204.9	344.4	0.00	0.00	0.00
2,120.0	13.13	34.07	2,082.2	284.5	210.0	353.5	0.00	0.00	0.00
2,160.0	13.13	34.07	2,121.1	292.0	215.1	362.6	0.00	0.00	0.00
2,200.0	13.13	34.07	2,160.1	299.6	220.1	371.6	0.00	0.00	0.00
2,240.0	13.13	34.07	2,199.1	307.1	225.2	380.7	0.00	0.00	0.00
2,280.0	13.13	34.07	2,238.0	314.6	230.3	389.8	0.00	0.00	0.00
2,320.0	13.13	34.07	2,277.0	322.1	235.4	398.9	0.00	0.00	0.00
2,360.0	13.13	34.07	2,315.9	329.7	240.5	408.0	0.00	0.00	0.00
2,400.0	13.13	34.07	2,354.9	337.2	245.6	417.1	0.00	0.00	0.00
2,440.0	13.13	34.07	2,393.8	344.7	250.7	426.2	0.00	0.00	0.00
2,480.0	13.13	34.07	2,432.8	352.3	255.8	435.3	0.00	0.00	0.00
2,520.0	13.13	34.07	2,471.7	359.8	260.9	444.4	0.00	0.00	0.00
2,560.0	13.13	34.07	2,510.7	367.3	266.0	453.4	0.00	0.00	0.00
2,600.0	13.13	34.07	2,549.6	374.9	271.1	462.5	0.00	0.00	0.00
2,640.0	13.13	34.07	2,588.6	382.4	276.2	471.6	0.00	0.00	0.00
2,680.0	13.13	34.07	2,627.5	389.9	281.3	480.7	0.00	0.00	0.00
2,720.0	13.13	34.07	2,666.5	397.4	286.3	489.8	0.00	0.00	0.00
2,760.0	13.13	34.07	2,705.4	405.0	291.4	498.9	0.00	0.00	0.00
2,800.0	13.13	34.07	2,744.4	412.5	296.5	508.0	0.00	0.00	0.00
2,840.0	13.13	34.07	2,783.4	420.0	301.6	517.1	0.00	0.00	0.00
2,880.0	13.13	34.07	2,822.3	427.6	306.7	526.1	0.00	0.00	0.00
2,920.0	13.13	34.07	2,861.3	435.1	311.8	535.2	0.00	0.00	0.00
2,960.0	13.13	34.07	2,900.2	442.6	316.9	544.3	0.00	0.00	0.00
3,000.0	13.13	34.07	2,939.2	450.1	322.0	553.4	0.00	0.00	0.00
3,040.0	13.13	34.07	2,978.1	457.7	327.1	562.5	0.00	0.00	0.00
3,080.0	13.13	34.07	3,017.1	465.2	332.2	571.6	0.00	0.00	0.00
3,120.0	13.13	34.07	3,056.0	472.7	337.3	580.7	0.00	0.00	0.00
3,160.0	13.13	34.07	3,095.0	480.3	342.4	589.8	0.00	0.00	0.00
3,200.0	13.13	34.07	3,133.9	487.8	347.5	598.9	0.00	0.00	0.00
3,240.0	13.13	34.07	3,172.9	495.3	352.5	607.9	0.00	0.00	0.00
3,280.0	13.13	34.07	3,211.8	502.8	357.6	617.0	0.00	0.00	0.00
3,320.0	13.13	34.07	3,250.8	510.4	362.7	626.1	0.00	0.00	0.00
3,360.0	13.13	34.07	3,289.8	517.9	367.8	635.2	0.00	0.00	0.00
3,400.0	13.13	34.07	3,328.7	525.4	372.9	644.3	0.00	0.00	0.00
3,440.0	13.13	34.07	3,367.7	533.0	378.0	653.4	0.00	0.00	0.00
3,480.0	13.13	34.07	3,406.6	540.5	383.1	662.5	0.00	0.00	0.00
3,520.0	13.13	34.07	3,445.6	548.0	388.2	671.6	0.00	0.00	0.00
3,560.0	13.13	34.07	3,484.5	555.5	393.3	680.7	0.00	0.00	0.00
3,600.0	13.13	34.07	3,523.5	563.1	398.4	689.7	0.00	0.00	0.00
3,640.0	13.13	34.07	3,562.4	570.6	403.5	698.8	0.00	0.00	0.00
3,680.0	13.13	34.07	3,601.4	578.1	408.6	707.9	0.00	0.00	0.00
3,720.0	13.13	34.07	3,640.3	585.7	413.7	717.0	0.00	0.00	0.00
3,760.0	13.13	34.07	3,679.3	593.2	418.7	726.1	0.00	0.00	0.00
3,800.0	13.13	34.07	3,718.2	600.7	423.8	735.2	0.00	0.00	0.00
3,840.0	13.13	34.07	3,757.2	608.2	428.9	744.3	0.00	0.00	0.00
3,880.0	13.13	34.07	3,796.1	615.8	434.0	753.4	0.00	0.00	0.00
3,920.0	13.13	34.07	3,835.1	623.3	439.1	762.4	0.00	0.00	0.00
3,960.0	13.13	34.07	3,874.1	630.8	444.2	771.5	0.00	0.00	0.00
4,000.0	13.13	34.07	3,913.0	638.4	449.3	780.6	0.00	0.00	0.00
4,040.0	13.13	34.07	3,952.0	645.9	454.4	789.7	0.00	0.00	0.00
4,073.9	13.13	34.07	3,985.0	652.3	458.7	797.4	0.00	0.00	0.00
<b>PARKMAN</b>									

<b>Database:</b>	Landmark	<b>Local Co-ordinate Reference:</b>	Well Thomason 25-16
<b>Company:</b>	Anadarko, Weld County CO	<b>TVD Reference:</b>	WELL @ 4899.0ft (Original Well Elev)
<b>Project:</b>	SEC.16-T2N-R65W	<b>MD Reference:</b>	WELL @ 4899.0ft (Original Well Elev)
<b>Site:</b>	Thomason 11-16 Pad Sec.16-T2N-R65W	<b>North Reference:</b>	True
<b>Well:</b>	Thomason 25-16	<b>Survey Calculation Method:</b>	Minimum Curvature
<b>Wellbore:</b>	Wellbore #1		
<b>Design:</b>	Plan #1 (3-01-11)		

Planned Survey										
Measured Depth (ft)	Inclination (°)	Azimuth (°)	Vertical Depth (ft)	+N/-S (ft)	+E/-W (ft)	Vertical Section (ft)	Dogleg Rate (°/100ft)	Build Rate (°/100ft)	Turn Rate (°/100ft)	
4,080.0	13.13	34.07	3,990.9	653.4	459.5	798.8	0.00	0.00	0.00	
4,120.0	13.13	34.07	4,029.9	660.9	464.6	807.9	0.00	0.00	0.00	
4,160.0	13.13	34.07	4,068.8	668.5	469.7	817.0	0.00	0.00	0.00	
4,200.0	13.13	34.07	4,107.8	676.0	474.8	826.1	0.00	0.00	0.00	
4,240.0	13.13	34.07	4,146.7	683.5	479.9	835.2	0.00	0.00	0.00	
4,280.0	13.13	34.07	4,185.7	691.1	484.9	844.2	0.00	0.00	0.00	
4,320.0	13.13	34.07	4,224.6	698.6	490.0	853.3	0.00	0.00	0.00	
4,360.0	13.13	34.07	4,263.6	706.1	495.1	862.4	0.00	0.00	0.00	
4,400.0	13.13	34.07	4,302.5	713.7	500.2	871.5	0.00	0.00	0.00	
4,440.0	13.13	34.07	4,341.5	721.2	505.3	880.6	0.00	0.00	0.00	
4,447.7	13.13	34.07	4,349.0	722.6	506.3	882.3	0.00	0.00	0.00	
4,480.0	12.49	34.07	4,380.5	728.6	510.3	889.5	2.00	-2.00	0.00	
4,520.0	11.69	34.07	4,419.6	735.5	515.0	897.9	2.00	-2.00	0.00	
4,560.0	10.89	34.07	4,458.8	742.0	519.4	905.7	2.00	-2.00	0.00	
4,596.8	10.15	34.07	4,495.0	747.6	523.2	912.4	2.00	-2.00	0.00	
<b>SUSSEX</b>										
4,600.0	10.09	34.07	4,498.2	748.0	523.5	913.0	2.00	-2.00	0.00	
4,640.0	9.29	34.07	4,537.6	753.6	527.2	919.7	2.00	-2.00	0.00	
4,680.0	8.49	34.07	4,577.1	758.7	530.7	925.9	2.00	-2.00	0.00	
4,720.0	7.69	34.07	4,616.7	763.4	533.9	931.5	2.00	-2.00	0.00	
4,760.0	6.89	34.07	4,656.4	767.6	536.7	936.6	2.00	-2.00	0.00	
4,800.0	6.09	34.07	4,696.1	771.3	539.2	941.1	2.00	-2.00	0.00	
4,840.0	5.29	34.07	4,735.9	774.6	541.5	945.1	2.00	-2.00	0.00	
4,880.0	4.49	34.07	4,775.8	777.4	543.4	948.5	2.00	-2.00	0.00	
4,920.0	3.69	34.07	4,815.7	779.8	545.0	951.3	2.00	-2.00	0.00	
4,960.0	2.89	34.07	4,855.6	781.7	546.2	953.6	2.00	-2.00	0.00	
5,000.0	2.09	34.07	4,895.6	783.1	547.2	955.4	2.00	-2.00	0.00	
5,040.0	1.29	34.07	4,935.6	784.1	547.9	956.6	2.00	-2.00	0.00	
5,080.0	0.49	34.07	4,975.6	784.6	548.2	957.2	2.00	-2.00	0.00	
5,104.4	0.00	0.00	5,000.0	784.7	548.3	957.3	2.00	-2.00	0.00	
<b>TARGET BHL 2580'FNL, 2570'FWL</b>										
5,120.0	0.00	0.00	5,015.6	784.7	548.3	957.3	0.00	0.00	0.00	
5,160.0	0.00	0.00	5,055.6	784.7	548.3	957.3	0.00	0.00	0.00	
5,200.0	0.00	0.00	5,095.6	784.7	548.3	957.3	0.00	0.00	0.00	
5,240.0	0.00	0.00	5,135.6	784.7	548.3	957.3	0.00	0.00	0.00	
5,280.0	0.00	0.00	5,175.6	784.7	548.3	957.3	0.00	0.00	0.00	
5,320.0	0.00	0.00	5,215.6	784.7	548.3	957.3	0.00	0.00	0.00	
5,360.0	0.00	0.00	5,255.6	784.7	548.3	957.3	0.00	0.00	0.00	
5,400.0	0.00	0.00	5,295.6	784.7	548.3	957.3	0.00	0.00	0.00	
5,440.0	0.00	0.00	5,335.6	784.7	548.3	957.3	0.00	0.00	0.00	
5,480.0	0.00	0.00	5,375.6	784.7	548.3	957.3	0.00	0.00	0.00	
5,520.0	0.00	0.00	5,415.6	784.7	548.3	957.3	0.00	0.00	0.00	
5,560.0	0.00	0.00	5,455.6	784.7	548.3	957.3	0.00	0.00	0.00	
5,600.0	0.00	0.00	5,495.6	784.7	548.3	957.3	0.00	0.00	0.00	
5,640.0	0.00	0.00	5,535.6	784.7	548.3	957.3	0.00	0.00	0.00	
5,680.0	0.00	0.00	5,575.6	784.7	548.3	957.3	0.00	0.00	0.00	
5,720.0	0.00	0.00	5,615.6	784.7	548.3	957.3	0.00	0.00	0.00	
5,760.0	0.00	0.00	5,655.6	784.7	548.3	957.3	0.00	0.00	0.00	
5,800.0	0.00	0.00	5,695.6	784.7	548.3	957.3	0.00	0.00	0.00	
5,840.0	0.00	0.00	5,735.6	784.7	548.3	957.3	0.00	0.00	0.00	
5,880.0	0.00	0.00	5,775.6	784.7	548.3	957.3	0.00	0.00	0.00	
5,920.0	0.00	0.00	5,815.6	784.7	548.3	957.3	0.00	0.00	0.00	
5,960.0	0.00	0.00	5,855.6	784.7	548.3	957.3	0.00	0.00	0.00	
6,000.0	0.00	0.00	5,895.6	784.7	548.3	957.3	0.00	0.00	0.00	

<b>Database:</b>	Landmark	<b>Local Co-ordinate Reference:</b>	Well Thomason 25-16
<b>Company:</b>	Anadarko, Weld County CO	<b>TVD Reference:</b>	WELL @ 4899.0ft (Original Well Elev)
<b>Project:</b>	SEC.16-T2N-R65W	<b>MD Reference:</b>	WELL @ 4899.0ft (Original Well Elev)
<b>Site:</b>	Thomason 11-16 Pad Sec.16-T2N-R65W	<b>North Reference:</b>	True
<b>Well:</b>	Thomason 25-16	<b>Survey Calculation Method:</b>	Minimum Curvature
<b>Wellbore:</b>	Wellbore #1		
<b>Design:</b>	Plan #1 (3-01-11)		

Planned Survey										
Measured Depth (ft)	Inclination (°)	Azimuth (°)	Vertical Depth (ft)	+N/-S (ft)	+E/-W (ft)	Vertical Section (ft)	Dogleg Rate (°/100ft)	Build Rate (°/100ft)	Turn Rate (°/100ft)	
6,040.0	0.00	0.00	5,935.6	784.7	548.3	957.3	0.00	0.00	0.00	
6,080.0	0.00	0.00	5,975.6	784.7	548.3	957.3	0.00	0.00	0.00	
6,120.0	0.00	0.00	6,015.6	784.7	548.3	957.3	0.00	0.00	0.00	
6,160.0	0.00	0.00	6,055.6	784.7	548.3	957.3	0.00	0.00	0.00	
6,200.0	0.00	0.00	6,095.6	784.7	548.3	957.3	0.00	0.00	0.00	
6,240.0	0.00	0.00	6,135.6	784.7	548.3	957.3	0.00	0.00	0.00	
6,280.0	0.00	0.00	6,175.6	784.7	548.3	957.3	0.00	0.00	0.00	
6,320.0	0.00	0.00	6,215.6	784.7	548.3	957.3	0.00	0.00	0.00	
6,360.0	0.00	0.00	6,255.6	784.7	548.3	957.3	0.00	0.00	0.00	
6,400.0	0.00	0.00	6,295.6	784.7	548.3	957.3	0.00	0.00	0.00	
6,440.0	0.00	0.00	6,335.6	784.7	548.3	957.3	0.00	0.00	0.00	
6,480.0	0.00	0.00	6,375.6	784.7	548.3	957.3	0.00	0.00	0.00	
6,520.0	0.00	0.00	6,415.6	784.7	548.3	957.3	0.00	0.00	0.00	
6,560.0	0.00	0.00	6,455.6	784.7	548.3	957.3	0.00	0.00	0.00	
6,600.0	0.00	0.00	6,495.6	784.7	548.3	957.3	0.00	0.00	0.00	
6,640.0	0.00	0.00	6,535.6	784.7	548.3	957.3	0.00	0.00	0.00	
6,680.0	0.00	0.00	6,575.6	784.7	548.3	957.3	0.00	0.00	0.00	
6,720.0	0.00	0.00	6,615.6	784.7	548.3	957.3	0.00	0.00	0.00	
6,760.0	0.00	0.00	6,655.6	784.7	548.3	957.3	0.00	0.00	0.00	
6,800.0	0.00	0.00	6,695.6	784.7	548.3	957.3	0.00	0.00	0.00	
6,840.0	0.00	0.00	6,735.6	784.7	548.3	957.3	0.00	0.00	0.00	
6,880.0	0.00	0.00	6,775.6	784.7	548.3	957.3	0.00	0.00	0.00	
6,920.0	0.00	0.00	6,815.6	784.7	548.3	957.3	0.00	0.00	0.00	
6,960.0	0.00	0.00	6,855.6	784.7	548.3	957.3	0.00	0.00	0.00	
7,000.0	0.00	0.00	6,895.6	784.7	548.3	957.3	0.00	0.00	0.00	
7,019.4	0.00	0.00	6,915.0	784.7	548.3	957.3	0.00	0.00	0.00	
<b>NIOBRARA - TARGET CIRCLE 2580'FNL, 2570'FWL</b>										
7,040.0	0.00	0.00	6,935.6	784.7	548.3	957.3	0.00	0.00	0.00	
7,080.0	0.00	0.00	6,975.6	784.7	548.3	957.3	0.00	0.00	0.00	
7,120.0	0.00	0.00	7,015.6	784.7	548.3	957.3	0.00	0.00	0.00	
7,160.0	0.00	0.00	7,055.6	784.7	548.3	957.3	0.00	0.00	0.00	
7,200.0	0.00	0.00	7,095.6	784.7	548.3	957.3	0.00	0.00	0.00	
7,240.0	0.00	0.00	7,135.6	784.7	548.3	957.3	0.00	0.00	0.00	
7,280.0	0.00	0.00	7,175.6	784.7	548.3	957.3	0.00	0.00	0.00	
7,304.4	0.00	0.00	7,200.0	784.7	548.3	957.3	0.00	0.00	0.00	
<b>CODELL</b>										
7,320.0	0.00	0.00	7,215.6	784.7	548.3	957.3	0.00	0.00	0.00	
7,360.0	0.00	0.00	7,255.6	784.7	548.3	957.3	0.00	0.00	0.00	
7,389.4	0.00	0.00	7,285.0	784.7	548.3	957.3	0.00	0.00	0.00	
<b>GREENHORN</b>										
7,400.0	0.00	0.00	7,295.6	784.7	548.3	957.3	0.00	0.00	0.00	
7,440.0	0.00	0.00	7,335.6	784.7	548.3	957.3	0.00	0.00	0.00	
7,464.4	0.00	0.00	7,360.0	784.7	548.3	957.3	0.00	0.00	0.00	
<b>HARD LINES 69'S &amp; 56'E OF BHL</b>										

<b>Database:</b>	Landmark	<b>Local Co-ordinate Reference:</b>	Well Thomason 25-16
<b>Company:</b>	Anadarko, Weld County CO	<b>TVD Reference:</b>	WELL @ 4899.0ft (Original Well Elev)
<b>Project:</b>	SEC.16-T2N-R65W	<b>MD Reference:</b>	WELL @ 4899.0ft (Original Well Elev)
<b>Site:</b>	Thomason 11-16 Pad Sec.16-T2N-R65W	<b>North Reference:</b>	True
<b>Well:</b>	Thomason 25-16	<b>Survey Calculation Method:</b>	Minimum Curvature
<b>Wellbore:</b>	Wellbore #1		
<b>Design:</b>	Plan #1 (3-01-11)		

Targets									
Target Name	Dip Angle (°)	Dip Dir. (°)	TVD (ft)	+N-S (ft)	+E-W (ft)	Northing (ft)	Easting (ft)	Latitude	Longitude
TARGET CIRCLE 258'F - plan hits target center - Circle (radius 50.0)	0.00	0.00	6,915.0	784.7	548.3	1,294,529.29	3,232,270.27	40.138890	-104.669214
TARGET BHL 2580'F - plan hits target center - Point	0.00	0.00	5,000.0	784.7	548.3	1,294,529.29	3,232,270.27	40.138890	-104.669214
HARD LINES 69'S & 4'E - plan misses target center by 88.9ft at 7464.4ft MD (7360.0 TVD, 784.7 N, 548.3 E) - Polygon	0.00	0.00	7,360.0	715.7	604.3	1,294,460.81	3,232,326.92	40.138701	-104.669014
Point 1			7,360.0	0.0	0.0	1,294,460.81	3,232,326.92		
Point 2			7,360.0	200.0	0.0	1,294,660.79	3,232,325.05		
Point 3			7,360.0	0.0	0.0	1,294,460.81	3,232,326.92		
Point 4			7,360.0	0.0	-200.0	1,294,458.94	3,232,126.94		

Casing Points					
Measured Depth (ft)	Vertical Depth (ft)	Name	Casing Diameter (")	Hole Diameter (")	
906.1	900.0	8 5/8"	8-5/8	12-1/4	

Formations						
Measured Depth (ft)	Vertical Depth (ft)	Name	Lithology	Dip (°)	Dip Direction (°)	
4,073.9	3,985.0	PARKMAN		0.00		
4,596.8	4,495.0	SUSSEX		0.00		
7,019.4	6,915.0	NIOBRARA		0.00		
7,304.4	7,200.0	CODELL		0.00		
7,389.4	7,285.0	GREENHORN		0.00		



## Directional

# Anadarko, Weld County CO

SEC.16-T2N-R65W

Thomason 11-16 Pad Sec.16-T2N-R65W

Thomason 25-16

Wellbore #1

Plan #1 (3-01-11)

## Anticollision Report

10 March, 2011



<b>Company:</b>	Anadarko, Weld County CO	<b>Local Co-ordinate Reference:</b>	Well Thomason 25-16
<b>Project:</b>	SEC.16-T2N-R65W	<b>TVD Reference:</b>	WELL @ 4899.0ft (Original Well Elev)
<b>Reference Site:</b>	Thomason 11-16 Pad Sec.16-T2N-R65W	<b>MD Reference:</b>	WELL @ 4899.0ft (Original Well Elev)
<b>Site Error:</b>	0.0ft	<b>North Reference:</b>	True
<b>Reference Well:</b>	Thomason 25-16	<b>Survey Calculation Method:</b>	Minimum Curvature
<b>Well Error:</b>	0.0ft	<b>Output errors are at</b>	2.00 sigma
<b>Reference Wellbore</b>	Wellbore #1	<b>Database:</b>	Landmark
<b>Reference Design:</b>	Plan #1 (3-01-11)	<b>Offset TVD Reference:</b>	Offset Datum

<b>Reference</b>	Plan #1 (3-01-11)		
<b>Filter type:</b>	NO GLOBAL FILTER: Using user defined selection & filtering criteria		
<b>Interpolation Method:</b>	Stations	<b>Error Model:</b>	ISCWSA
<b>Depth Range:</b>	Unlimited	<b>Scan Method:</b>	Closest Approach 3D
<b>Results Limited by:</b>	Maximum center-center distance of 10,000.0ft	<b>Error Surface:</b>	Elliptical Conic
<b>Warning Levels Evaluated at:</b>	2.00 Sigma		

<b>Survey Tool Program</b>	Date 3/10/2011			
<b>From (ft)</b>	<b>To (ft)</b>	<b>Survey (Wellbore)</b>	<b>Tool Name</b>	<b>Description</b>
0.0	7,464.4	Plan #1 (3-01-11) (Wellbore #1)	MWD	MWD - Standard

<b>Summary</b>						
<b>Site Name</b>	<b>Reference Measured Depth (ft)</b>	<b>Offset Measured Depth (ft)</b>	<b>Distance Between Centres (ft)</b>	<b>Distance Between Ellipses (ft)</b>	<b>Separation Factor</b>	<b>Warning</b>
<b>Offset Well - Wellbore - Design</b>						
Thomason 11-16 Pad Sec.16-T2N-R65W						
Thomason 21-16 - Wellbore #1 - Plan #1 (3-01-11)	200.0	200.0	16.0	15.4	23.771	CC, ES
Thomason 21-16 - Wellbore #1 - Plan #1 (3-01-11)	1,000.0	993.2	45.4	40.0	8.382	SF
Thomason 23-16 - Wellbore #1 - Plan #1 (3-01-11)	200.0	200.0	16.0	15.4	23.778	CC, ES
Thomason 23-16 - Wellbore #1 - Plan #1 (3-01-11)	400.0	399.8	19.6	18.0	12.426	SF
Thomason X #16-11 (Exist.) - Wellbore #1 - Design #1	200.0	197.0	71.5	70.8	107.047	CC, ES
Thomason X #16-11 (Exist.) - Wellbore #1 - Design #1	908.3	899.1	105.9	101.8	25.919	SF

<b>Offset Design</b>													<b>Offset Site Error:</b>	0.0 ft
Thomason 11-16 Pad Sec.16-T2N-R65W - Thomason 21-16 - Wellbore #1 - Plan #1 (3-01-11)													<b>Offset Well Error:</b>	0.0 ft
Survey Program: 0-MWD														
<b>Reference</b>		<b>Offset</b>		<b>Semi Major Axis</b>			<b>Distance</b>					<b>Warning</b>		
<b>Measured Depth (ft)</b>	<b>Vertical Depth (ft)</b>	<b>Measured Depth (ft)</b>	<b>Vertical Depth (ft)</b>	<b>Reference (ft)</b>	<b>Offset (ft)</b>	<b>Highside Toolface (°)</b>	<b>Offset Wellbore Centre +N/-S (ft)</b>	<b>Offset Wellbore Centre +E/-W (ft)</b>	<b>Between Centres (ft)</b>	<b>Between Ellipses (ft)</b>	<b>Minimum Separation (ft)</b>	<b>Separation Factor</b>		
0.0	0.0	0.0	0.0	0.0	0.0	0.00	16.0	0.0	16.0	16.0	0.00	N/A		
100.0	100.0	100.0	100.0	0.1	0.1	0.00	16.0	0.0	16.0	15.8	0.22	71.314		
200.0	200.0	200.0	200.0	0.3	0.3	0.00	16.0	0.0	16.0	15.4	0.67	23.771	CC, ES	
300.0	300.0	299.6	299.6	0.6	0.6	-71.05	17.1	1.3	16.6	15.4	1.11	14.853		
400.0	399.8	399.1	399.0	0.8	0.8	-74.56	20.6	5.1	18.3	16.7	1.57	11.671		
500.0	499.5	498.4	497.9	1.0	1.0	-64.82	27.3	9.7	21.4	19.3	2.06	10.394		
600.0	598.9	597.6	596.5	1.3	1.3	-61.94	37.4	14.9	24.9	22.3	2.58	9.637		
700.0	697.8	696.7	694.4	1.6	1.6	-61.99	50.8	20.8	29.0	25.8	3.17	9.140		
800.0	796.3	795.7	791.8	2.0	2.0	-63.28	67.4	27.2	33.6	29.8	3.83	8.768		
908.3	902.1	902.7	896.3	2.4	2.4	-65.20	89.2	34.9	39.3	34.6	4.65	8.436		
1,000.0	991.5	993.2	984.0	2.8	2.8	-67.12	110.6	42.0	45.4	40.0	5.42	8.382	SF	
1,100.0	1,088.9	1,091.6	1,078.4	3.2	3.3	-66.24	136.9	50.2	54.6	48.3	6.27	8.707		
1,200.0	1,186.3	1,189.3	1,171.2	3.7	3.9	-63.64	166.2	58.9	66.3	59.2	7.10	9.331		
1,300.0	1,283.6	1,286.3	1,262.2	4.1	4.5	-60.34	198.3	68.1	80.7	72.8	7.91	10.209		
1,400.0	1,381.0	1,382.2	1,351.1	4.6	5.2	-56.95	233.1	77.7	98.1	89.4	8.67	11.309		
1,500.0	1,478.4	1,477.9	1,438.6	5.1	5.9	-53.79	270.5	87.8	118.4	108.9	9.42	12.570		
1,600.0	1,575.8	1,575.4	1,527.5	5.5	6.6	-51.34	309.4	98.2	139.6	129.4	10.16	13.739		
1,700.0	1,673.2	1,673.0	1,616.3	6.0	7.4	-49.54	348.3	108.7	161.0	150.1	10.91	14.758		
1,800.0	1,770.6	1,770.6	1,705.2	6.5	8.1	-48.17	387.1	119.1	182.5	170.8	11.66	15.648		
1,900.0	1,867.9	1,868.2	1,794.1	7.0	8.9	-47.08	426.0	129.5	204.1	191.7	12.42	16.430		
2,000.0	1,965.3	1,965.7	1,883.0	7.4	9.7	-46.20	464.9	139.9	225.7	212.6	13.18	17.122		

CC - Min centre to center distance or convergent point, SF - min separation factor, ES - min ellipse separation

<b>Company:</b>	Anadarko, Weld County CO	<b>Local Co-ordinate Reference:</b>	Well Thomason 25-16
<b>Project:</b>	SEC.16-T2N-R65W	<b>TVD Reference:</b>	WELL @ 4899.0ft (Original Well Elev)
<b>Reference Site:</b>	Thomason 11-16 Pad Sec.16-T2N-R65W	<b>MD Reference:</b>	WELL @ 4899.0ft (Original Well Elev)
<b>Site Error:</b>	0.0ft	<b>North Reference:</b>	True
<b>Reference Well:</b>	Thomason 25-16	<b>Survey Calculation Method:</b>	Minimum Curvature
<b>Well Error:</b>	0.0ft	<b>Output errors are at</b>	2.00 sigma
<b>Reference Wellbore</b>	Wellbore #1	<b>Database:</b>	Landmark
<b>Reference Design:</b>	Plan #1 (3-01-11)	<b>Offset TVD Reference:</b>	Offset Datum

Offset Design													Offset Site Error:	0.0ft
Survey Program: 0-MWD													Offset Well Error:	0.0ft
Thomason 11-16 Pad Sec.16-T2N-R65W - Thomason 21-16 - Wellbore #1 - Plan #1 (3-01-11)														
Reference		Offset		Semi Major Axis			Distance						Warning	
Measured Depth (ft)	Vertical Depth (ft)	Measured Depth (ft)	Vertical Depth (ft)	Reference (ft)	Offset (ft)	Highside Toolface (°)	Offset Wellbore Centre +N/-S (ft)	+E/-W (ft)	Between Centres (ft)	Between Ellipses (ft)	Minimum Separation (ft)	Separation Factor		
2,100.0	2,062.7	2,063.3	1,971.9	7.9	10.4	-45.48	503.7	150.3	247.4	233.5	13.95	17.736		
2,200.0	2,160.1	2,160.9	2,060.8	8.4	11.2	-44.87	542.6	160.7	269.2	254.4	14.72	18.285		
2,300.0	2,257.5	2,258.5	2,149.7	8.9	12.0	-44.36	581.4	171.2	290.9	275.4	15.49	18.779		
2,400.0	2,354.9	2,356.0	2,238.6	9.3	12.7	-43.91	620.3	181.6	312.7	296.4	16.26	19.224		
2,500.0	2,452.2	2,453.6	2,327.5	9.8	13.5	-43.52	659.2	192.0	334.5	317.4	17.04	19.628		
2,600.0	2,549.6	2,551.2	2,416.4	10.3	14.3	-43.18	698.0	202.4	356.3	338.4	17.82	19.996		
2,700.0	2,647.0	2,648.8	2,505.3	10.8	15.1	-42.88	736.9	212.8	378.1	359.5	18.59	20.333		
2,800.0	2,744.4	2,746.3	2,594.2	11.2	15.8	-42.62	775.8	223.2	399.9	380.5	19.37	20.642		
2,900.0	2,841.8	2,843.9	2,683.1	11.7	16.6	-42.37	814.6	233.7	421.7	401.6	20.15	20.926		
3,000.0	2,939.2	2,941.5	2,772.0	12.2	17.4	-42.16	853.5	244.1	443.5	422.6	20.93	21.189		
3,100.0	3,036.6	3,039.1	2,860.8	12.7	18.2	-41.96	892.4	254.5	465.4	443.7	21.71	21.432		
3,200.0	3,133.9	3,136.6	2,949.7	13.2	19.0	-41.78	931.2	264.9	487.2	464.7	22.50	21.658		
3,300.0	3,231.3	3,234.2	3,038.6	13.6	19.7	-41.62	970.1	275.3	509.1	485.8	23.28	21.869		
3,400.0	3,328.7	3,331.8	3,127.5	14.1	20.5	-41.47	1,009.0	285.8	530.9	506.9	24.06	22.065		
3,500.0	3,426.1	3,429.4	3,216.4	14.6	21.3	-41.33	1,047.8	296.2	552.8	527.9	24.84	22.249		
3,600.0	3,523.5	3,526.9	3,305.3	15.1	22.1	-41.21	1,086.7	306.6	574.6	549.0	25.63	22.421		
3,700.0	3,620.9	3,624.5	3,394.2	15.5	22.8	-41.09	1,125.5	317.0	596.5	570.1	26.41	22.583		
3,800.0	3,718.2	3,722.1	3,483.1	16.0	23.6	-40.98	1,164.4	327.4	618.3	591.1	27.20	22.735		
3,900.0	3,815.6	3,819.7	3,572.0	16.5	24.4	-40.88	1,203.3	337.8	640.2	612.2	27.98	22.879		
4,000.0	3,913.0	3,917.2	3,660.9	17.0	25.2	-40.78	1,242.1	348.3	662.1	633.3	28.77	23.014		
4,100.0	4,010.4	4,014.8	3,749.8	17.5	26.0	-40.69	1,281.0	358.7	683.9	654.4	29.55	23.143		
4,200.0	4,107.8	4,112.4	3,838.7	17.9	26.7	-40.61	1,319.9	369.1	705.8	675.5	30.34	23.264		
4,300.0	4,205.2	4,210.0	3,927.6	18.4	27.5	-40.53	1,358.7	379.5	727.7	696.5	31.12	23.379		
4,400.0	4,302.5	4,307.5	4,016.5	18.9	28.3	-40.45	1,397.6	389.9	749.5	717.6	31.91	23.488		
4,447.7	4,349.0	4,354.1	4,058.9	19.1	28.7	-40.42	1,416.1	394.9	760.0	727.7	32.29	23.538		
4,500.0	4,400.0	4,405.0	4,105.3	19.3	29.1	-40.52	1,436.4	400.3	771.7	739.1	32.68	23.615		
4,600.0	4,498.2	4,501.9	4,193.5	19.7	29.8	-40.61	1,475.0	410.7	796.3	762.9	33.33	23.890		
4,700.0	4,596.9	4,598.0	4,281.1	20.0	30.6	-40.59	1,513.3	420.9	823.4	789.5	33.90	24.291		
4,800.0	4,696.1	4,693.2	4,367.8	20.2	31.4	-40.48	1,551.2	431.1	853.1	818.7	34.38	24.814		
4,900.0	4,795.7	4,787.4	4,453.6	20.4	32.1	-40.29	1,588.7	441.2	885.3	850.6	34.78	25.456		
5,000.0	4,895.6	4,880.5	4,538.4	20.6	32.9	-40.03	1,625.8	451.1	920.3	885.2	35.10	26.215		
5,104.4	5,000.0	4,976.4	4,625.8	20.7	33.6	-5.65	1,664.0	461.3	959.5	924.2	35.37	27.130		
5,200.0	5,095.6	5,063.4	4,705.1	20.8	34.3	-4.86	1,698.7	470.6	996.9	961.4	35.52	28.063		
5,300.0	5,195.6	5,154.5	4,788.1	20.9	35.1	-4.09	1,734.9	480.4	1,036.1	1,000.4	35.72	29.005		
5,400.0	5,295.6	5,277.9	4,901.0	21.0	35.9	-3.16	1,782.8	493.2	1,074.7	1,038.8	35.92	29.915		
5,500.0	5,395.6	5,424.9	5,038.2	21.2	36.7	-2.26	1,833.9	506.9	1,109.2	1,073.0	36.17	30.668		
5,600.0	5,495.6	5,577.5	5,183.2	21.3	37.4	-1.52	1,879.7	519.1	1,139.0	1,102.6	36.46	31.240		
5,700.0	5,595.6	5,735.1	5,335.4	21.4	38.1	-0.94	1,919.0	529.7	1,163.9	1,127.1	36.79	31.638		
5,800.0	5,695.6	5,896.9	5,493.8	21.5	38.6	-0.49	1,951.0	538.3	1,183.7	1,146.5	37.14	31.868		
5,900.0	5,795.6	6,062.1	5,657.1	21.6	39.1	-0.18	1,974.6	544.6	1,198.0	1,160.5	37.50	31.945		
6,000.0	5,895.6	6,229.6	5,823.9	21.8	39.4	0.01	1,989.3	548.5	1,206.7	1,168.9	37.86	31.872		
6,100.0	5,995.6	6,398.3	5,992.5	21.9	39.6	0.08	1,994.5	549.9	1,209.8	1,171.6	38.22	31.658		
6,200.0	6,095.6	6,501.3	6,095.6	22.0	39.7	0.08	1,994.5	549.9	1,209.8	1,171.3	38.50	31.421		
6,300.0	6,195.6	6,601.3	6,195.6	22.2	39.7	0.08	1,994.5	549.9	1,209.8	1,171.0	38.80	31.181		
6,400.0	6,295.6	6,701.3	6,295.6	22.3	39.8	0.08	1,994.5	549.9	1,209.8	1,170.7	39.10	30.941		
6,500.0	6,395.6	6,801.3	6,395.6	22.4	39.9	0.08	1,994.5	549.9	1,209.8	1,170.4	39.40	30.704		
6,600.0	6,495.6	6,901.3	6,495.6	22.6	40.0	0.08	1,994.5	549.9	1,209.8	1,170.1	39.71	30.467		
6,700.0	6,595.6	7,001.3	6,595.6	22.7	40.0	0.08	1,994.5	549.9	1,209.8	1,169.8	40.02	30.233		
6,800.0	6,695.6	7,101.3	6,695.6	22.8	40.1	0.08	1,994.5	549.9	1,209.8	1,169.5	40.33	30.000		
6,900.0	6,795.6	7,201.3	6,795.6	23.0	40.2	0.08	1,994.5	549.9	1,209.8	1,169.2	40.64	29.769		
7,000.0	6,895.6	7,301.3	6,895.6	23.1	40.2	0.08	1,994.5	549.9	1,209.8	1,168.9	40.96	29.539		
7,100.0	6,995.6	7,401.3	6,995.6	23.3	40.3	0.08	1,994.5	549.9	1,209.8	1,168.6	41.28	29.311		

CC - Min centre to center distance or convergent point, SF - min separation factor, ES - min ellipse separation

<b>Company:</b>	Anadarko, Weld County CO	<b>Local Co-ordinate Reference:</b>	Well Thomason 25-16
<b>Project:</b>	SEC.16-T2N-R65W	<b>TVD Reference:</b>	WELL @ 4899.0ft (Original Well Elev)
<b>Reference Site:</b>	Thomason 11-16 Pad Sec.16-T2N-R65W	<b>MD Reference:</b>	WELL @ 4899.0ft (Original Well Elev)
<b>Site Error:</b>	0.0ft	<b>North Reference:</b>	True
<b>Reference Well:</b>	Thomason 25-16	<b>Survey Calculation Method:</b>	Minimum Curvature
<b>Well Error:</b>	0.0ft	<b>Output errors are at</b>	2.00 sigma
<b>Reference Wellbore</b>	Wellbore #1	<b>Database:</b>	Landmark
<b>Reference Design:</b>	Plan #1 (3-01-11)	<b>Offset TVD Reference:</b>	Offset Datum

<b>Offset Design</b> Thomason 11-16 Pad Sec.16-T2N-R65W - Thomason 21-16 - Wellbore #1 - Plan #1 (3-01-11)												<b>Offset Site Error:</b>	0.0 ft
Survey Program: 0-MWD												<b>Offset Well Error:</b>	0.0 ft
Reference		Offset		Semi Major Axis			Distance						Warning
Measured Depth (ft)	Vertical Depth (ft)	Measured Depth (ft)	Vertical Depth (ft)	Reference (ft)	Offset (ft)	Highside Toolface (°)	Offset Wellbore Centre +N/-S (ft)	+E/-W (ft)	Between Centres (ft)	Between Ellipses (ft)	Minimum Separation (ft)	Separation Factor	
7,200.0	7,095.6	7,501.3	7,095.6	23.4	40.4	0.08	1,994.5	549.9	1,209.8	1,168.2	41.60	29.085	
7,300.0	7,195.6	7,601.3	7,195.6	23.5	40.5	0.08	1,994.5	549.9	1,209.8	1,167.9	41.92	28.861	
7,400.0	7,295.6	7,701.3	7,295.6	23.7	40.6	0.08	1,994.5	549.9	1,209.8	1,167.6	42.24	28.639	
7,464.4	7,360.0	7,765.8	7,360.0	23.8	40.6	0.08	1,994.5	549.9	1,209.8	1,167.4	42.45	28.497	

<b>Company:</b>	Anadarko, Weld County CO	<b>Local Co-ordinate Reference:</b>	Well Thomason 25-16
<b>Project:</b>	SEC.16-T2N-R65W	<b>TVD Reference:</b>	WELL @ 4899.0ft (Original Well Elev)
<b>Reference Site:</b>	Thomason 11-16 Pad Sec.16-T2N-R65W	<b>MD Reference:</b>	WELL @ 4899.0ft (Original Well Elev)
<b>Site Error:</b>	0.0ft	<b>North Reference:</b>	True
<b>Reference Well:</b>	Thomason 25-16	<b>Survey Calculation Method:</b>	Minimum Curvature
<b>Well Error:</b>	0.0ft	<b>Output errors are at</b>	2.00 sigma
<b>Reference Wellbore</b>	Wellbore #1	<b>Database:</b>	Landmark
<b>Reference Design:</b>	Plan #1 (3-01-11)	<b>Offset TVD Reference:</b>	Offset Datum

Offset Design													Offset Site Error:	0.0ft		
Survey Program: 0-MWD													Thomason 11-16 Pad Sec.16-T2N-R65W - Thomason 23-16 - Wellbore #1 - Plan #1 (3-01-11)		Offset Well Error:	0.0ft
Reference		Offset		Semi Major Axis			Distance						Warning			
Measured Depth (ft)	Vertical Depth (ft)	Measured Depth (ft)	Vertical Depth (ft)	Reference (ft)	Offset (ft)	Highside Tooface (°)	Offset Wellbore Centre +N/-S (ft)	+E/-W (ft)	Between Centres (ft)	Between Ellipses (ft)	Minimum Separation (ft)	Separation Factor				
0.0	0.0	0.0	0.0	0.0	0.0	-180.00	-16.0	0.0	16.0	16.0	0.00	N/A				
100.0	100.0	100.0	100.0	0.1	0.1	-180.00	-16.0	0.0	16.0	15.8	0.22	71.333				
200.0	200.0	200.0	200.0	0.3	0.3	-180.00	-16.0	0.0	16.0	15.4	0.67	23.778 CC, ES				
300.0	300.0	300.0	300.0	0.6	0.6	115.62	-16.0	0.0	16.7	15.6	1.12	14.933				
400.0	399.8	399.8	399.8	0.8	0.8	129.53	-16.0	0.0	19.6	18.0	1.57	12.426 SF				
500.0	499.5	499.5	499.5	1.0	1.0	157.28	-16.0	0.0	26.3	24.3	2.04	12.887				
600.0	598.9	598.9	598.9	1.3	1.2	171.22	-16.0	0.0	37.0	34.5	2.50	14.798				
700.0	697.8	697.8	697.8	1.6	1.5	178.12	-16.0	0.0	51.2	48.3	2.96	17.297				
800.0	796.3	796.3	796.3	2.0	1.7	-178.37	-16.0	0.0	68.8	65.3	3.42	20.090				
908.3	902.1	902.1	902.1	2.4	1.9	-176.43	-16.0	0.0	91.4	87.5	3.92	23.309				
1,000.0	991.5	991.5	991.5	2.8	2.1	-177.09	-16.0	0.0	112.2	107.9	4.35	25.812				
1,100.0	1,088.9	1,088.9	1,088.9	3.2	2.3	-177.58	-16.0	0.0	134.9	130.1	4.82	28.008				
1,200.0	1,186.3	1,186.3	1,186.3	3.7	2.6	-177.93	-16.0	0.0	157.6	152.3	5.29	29.792				
1,300.0	1,283.6	1,282.5	1,282.4	4.1	2.8	-178.57	-16.9	0.8	180.6	174.9	5.75	31.422				
1,400.0	1,381.0	1,377.9	1,377.8	4.6	2.9	-179.94	-20.2	3.6	204.4	198.2	6.20	32.991				
1,500.0	1,478.4	1,472.6	1,472.2	5.1	3.1	178.19	-25.8	8.5	229.2	222.5	6.66	34.428				
1,600.0	1,575.8	1,566.4	1,565.4	5.5	3.3	176.01	-33.6	15.4	255.1	248.0	7.14	35.722				
1,700.0	1,673.2	1,659.0	1,657.0	6.0	3.5	173.66	-43.6	24.2	282.5	274.8	7.66	36.887				
1,800.0	1,770.6	1,750.3	1,746.9	6.5	3.8	171.21	-55.6	34.7	311.4	303.2	8.21	37.935				
1,900.0	1,867.9	1,840.1	1,834.8	7.0	4.1	168.75	-69.6	47.0	342.2	333.4	8.80	38.893				
2,000.0	1,965.3	1,933.1	1,925.4	7.4	4.4	166.35	-85.3	60.8	374.3	364.9	9.43	39.679				
2,100.0	2,062.7	2,026.7	2,016.6	7.9	4.7	164.30	-101.1	74.6	406.9	396.8	10.08	40.358				
2,200.0	2,160.1	2,120.3	2,107.8	8.4	5.1	162.56	-117.0	88.5	440.0	429.2	10.75	40.943				
2,300.0	2,257.5	2,213.9	2,199.0	8.9	5.5	161.06	-132.8	102.4	473.3	461.9	11.42	41.464				
2,400.0	2,354.9	2,307.5	2,290.2	9.3	5.9	159.76	-148.7	116.3	506.9	494.8	12.09	41.925				
2,500.0	2,452.2	2,401.1	2,381.3	9.8	6.3	158.61	-164.5	130.2	540.7	528.0	12.77	42.339				
2,600.0	2,549.6	2,494.6	2,472.5	10.3	6.7	157.60	-180.3	144.1	574.7	561.3	13.46	42.713				
2,700.0	2,647.0	2,588.2	2,563.7	10.8	7.1	156.71	-196.2	158.0	608.9	594.7	14.14	43.052				
2,800.0	2,744.4	2,681.8	2,654.9	11.2	7.5	155.90	-212.0	171.9	643.1	628.3	14.83	43.363				
2,900.0	2,841.8	2,775.4	2,746.1	11.7	8.0	155.18	-227.9	185.8	677.4	661.9	15.52	43.648				
3,000.0	2,939.2	2,869.0	2,837.3	12.2	8.4	154.53	-243.7	199.7	711.9	695.7	16.21	43.911				
3,100.0	3,036.6	2,962.6	2,928.5	12.7	8.8	153.93	-259.5	213.6	746.4	729.5	16.90	44.154				
3,200.0	3,133.9	3,056.2	3,019.6	13.2	9.3	153.39	-275.4	227.5	781.0	763.4	17.60	44.380				
3,300.0	3,231.3	3,149.8	3,110.8	13.6	9.7	152.90	-291.2	241.4	815.6	797.3	18.29	44.590				
3,400.0	3,328.7	3,243.3	3,202.0	14.1	10.2	152.44	-307.1	255.2	850.3	831.3	18.98	44.786				
3,500.0	3,426.1	3,336.9	3,293.2	14.6	10.6	152.02	-322.9	269.1	885.0	865.3	19.68	44.970				
3,600.0	3,523.5	3,430.5	3,384.4	15.1	11.1	151.63	-338.8	283.0	919.7	899.4	20.37	45.141				
3,700.0	3,620.9	3,524.1	3,475.6	15.5	11.5	151.27	-354.6	296.9	954.5	933.5	21.07	45.303				
3,800.0	3,718.2	3,617.7	3,566.8	16.0	11.9	150.94	-370.4	310.8	989.4	967.6	21.77	45.454				
3,900.0	3,815.6	3,711.3	3,657.9	16.5	12.4	150.63	-386.3	324.7	1,024.2	1,001.8	22.46	45.597				
4,000.0	3,913.0	3,804.9	3,749.1	17.0	12.8	150.34	-402.1	338.6	1,059.1	1,035.9	23.16	45.732				
4,100.0	4,010.4	3,898.5	3,840.3	17.5	13.3	150.06	-418.0	352.5	1,094.0	1,070.2	23.86	45.860				
4,200.0	4,107.8	3,992.0	3,931.5	17.9	13.8	149.81	-433.8	366.4	1,128.9	1,104.4	24.55	45.980				
4,300.0	4,205.2	4,085.6	4,022.7	18.4	14.2	149.57	-449.6	380.3	1,163.9	1,138.6	25.25	46.095				
4,400.0	4,302.5	4,179.2	4,113.9	18.9	14.7	149.34	-465.5	394.2	1,198.8	1,172.9	25.95	46.203				
4,447.7	4,349.0	4,223.9	4,157.4	19.1	14.9	149.24	-473.0	400.8	1,215.5	1,189.2	26.28	46.253				
4,500.0	4,400.0	4,272.9	4,205.2	19.3	15.1	149.31	-481.3	408.1	1,233.4	1,206.7	26.67	46.246				
4,600.0	4,498.2	4,367.5	4,297.3	19.7	15.6	149.36	-497.3	422.1	1,265.5	1,238.2	27.36	46.252				
4,700.0	4,596.9	4,462.8	4,390.1	20.0	16.0	149.32	-513.5	436.3	1,294.8	1,266.8	28.02	46.206				
4,800.0	4,696.1	4,558.7	4,483.6	20.2	16.5	149.18	-529.7	450.5	1,321.3	1,292.6	28.65	46.118				
4,900.0	4,795.7	4,655.3	4,577.7	20.4	17.0	148.94	-546.1	464.8	1,344.9	1,315.6	29.24	45.994				
5,000.0	4,895.6	4,752.3	4,672.2	20.6	17.5	148.62	-562.5	479.2	1,365.7	1,335.9	29.79	45.841				

CC - Min centre to center distance or convergent point, SF - min separation factor, ES - min ellipse separation

<b>Company:</b>	Anadarko, Weld County CO	<b>Local Co-ordinate Reference:</b>	Well Thomason 25-16
<b>Project:</b>	SEC.16-T2N-R65W	<b>TVD Reference:</b>	WELL @ 4899.0ft (Original Well Elev)
<b>Reference Site:</b>	Thomason 11-16 Pad Sec.16-T2N-R65W	<b>MD Reference:</b>	WELL @ 4899.0ft (Original Well Elev)
<b>Site Error:</b>	0.0ft	<b>North Reference:</b>	True
<b>Reference Well:</b>	Thomason 25-16	<b>Survey Calculation Method:</b>	Minimum Curvature
<b>Well Error:</b>	0.0ft	<b>Output errors are at</b>	2.00 sigma
<b>Reference Wellbore</b>	Wellbore #1	<b>Database:</b>	Landmark
<b>Reference Design:</b>	Plan #1 (3-01-11)	<b>Offset TVD Reference:</b>	Offset Datum

Offset Design													Offset Site Error:	0.0ft		
Survey Program: 0-MWD													Thomason 11-16 Pad Sec.16-T2N-R65W - Thomason 23-16 - Wellbore #1 - Plan #1 (3-01-11)		Offset Well Error:	0.0ft
Reference		Offset		Semi Major Axis			Distance						Warning			
Measured Depth (ft)	Vertical Depth (ft)	Measured Depth (ft)	Vertical Depth (ft)	Reference (ft)	Offset (ft)	Highside Toolface (°)	Offset Wellbore Centre +N/-S (ft)	+E/-W (ft)	Between Centres (ft)	Between Ellipses (ft)	Minimum Separation (ft)	Separation Factor				
5,104.4	5,000.0	4,853.9	4,771.2	20.7	18.0	-177.74	-579.7	494.3	1,384.5	1,354.2	30.32	45.657				
5,200.0	5,095.6	4,951.0	4,865.8	20.8	18.4	-178.36	-596.1	508.7	1,400.3	1,369.5	30.84	45.413				
5,300.0	5,195.6	5,105.6	5,017.5	20.9	19.0	-179.20	-618.8	528.6	1,414.9	1,383.4	31.46	44.975				
5,400.0	5,295.6	5,263.2	5,173.4	21.0	19.4	-179.80	-635.5	543.3	1,425.4	1,393.4	32.00	44.545				
5,500.0	5,395.6	5,422.7	5,332.4	21.2	19.7	179.84	-645.8	552.4	1,431.9	1,399.5	32.48	44.086				
5,600.0	5,495.6	5,583.3	5,492.9	21.3	19.9	179.71	-649.5	555.6	1,434.2	1,401.3	32.90	43.594				
5,700.0	5,595.6	5,686.0	5,595.6	21.4	20.1	179.71	-649.5	555.6	1,434.3	1,401.0	33.21	43.190				
5,800.0	5,695.6	5,786.0	5,695.6	21.5	20.2	179.71	-649.5	555.6	1,434.3	1,400.7	33.51	42.795				
5,900.0	5,795.6	5,886.0	5,795.6	21.6	20.3	179.71	-649.5	555.6	1,434.3	1,400.4	33.82	42.404				
6,000.0	5,895.6	5,986.0	5,895.6	21.8	20.4	179.71	-649.5	555.6	1,434.3	1,400.1	34.14	42.015				
6,100.0	5,995.6	6,086.0	5,995.6	21.9	20.6	179.71	-649.5	555.6	1,434.3	1,399.8	34.45	41.631				
6,200.0	6,095.6	6,186.0	6,095.6	22.0	20.7	179.71	-649.5	555.6	1,434.3	1,399.5	34.77	41.249				
6,300.0	6,195.6	6,286.0	6,195.6	22.2	20.8	179.71	-649.5	555.6	1,434.3	1,399.2	35.09	40.871				
6,400.0	6,295.6	6,386.0	6,295.6	22.3	20.9	179.71	-649.5	555.6	1,434.3	1,398.8	35.42	40.497				
6,500.0	6,395.6	6,486.0	6,395.6	22.4	21.1	179.71	-649.5	555.6	1,434.3	1,398.5	35.74	40.127				
6,600.0	6,495.6	6,586.0	6,495.6	22.6	21.2	179.71	-649.5	555.6	1,434.3	1,398.2	36.07	39.760				
6,700.0	6,595.6	6,686.0	6,595.6	22.7	21.3	179.71	-649.5	555.6	1,434.3	1,397.8	36.40	39.397				
6,800.0	6,695.6	6,786.0	6,695.6	22.8	21.5	179.71	-649.5	555.6	1,434.3	1,397.5	36.74	39.039				
6,900.0	6,795.6	6,886.0	6,795.6	23.0	21.6	179.71	-649.5	555.6	1,434.3	1,397.2	37.08	38.684				
7,000.0	6,895.6	6,986.0	6,895.6	23.1	21.7	179.71	-649.5	555.6	1,434.3	1,396.8	37.42	38.333				
7,100.0	6,995.6	7,086.0	6,995.6	23.3	21.9	179.71	-649.5	555.6	1,434.3	1,396.5	37.76	37.986				
7,200.0	7,095.6	7,186.0	7,095.6	23.4	22.0	179.71	-649.5	555.6	1,434.3	1,396.2	38.10	37.643				
7,300.0	7,195.6	7,286.0	7,195.6	23.5	22.2	179.71	-649.5	555.6	1,434.3	1,395.8	38.45	37.304				
7,400.0	7,295.6	7,386.0	7,295.6	23.7	22.3	179.71	-649.5	555.6	1,434.3	1,395.5	38.80	36.969				
7,464.4	7,360.0	7,450.5	7,360.0	23.8	22.4	179.71	-649.5	555.6	1,434.3	1,395.2	39.02	36.756				

<b>Company:</b>	Anadarko, Weld County CO	<b>Local Co-ordinate Reference:</b>	Well Thomason 25-16
<b>Project:</b>	SEC.16-T2N-R65W	<b>TVD Reference:</b>	WELL @ 4899.0ft (Original Well Elev)
<b>Reference Site:</b>	Thomason 11-16 Pad Sec.16-T2N-R65W	<b>MD Reference:</b>	WELL @ 4899.0ft (Original Well Elev)
<b>Site Error:</b>	0.0ft	<b>North Reference:</b>	True
<b>Reference Well:</b>	Thomason 25-16	<b>Survey Calculation Method:</b>	Minimum Curvature
<b>Well Error:</b>	0.0ft	<b>Output errors are at</b>	2.00 sigma
<b>Reference Wellbore</b>	Wellbore #1	<b>Database:</b>	Landmark
<b>Reference Design:</b>	Plan #1 (3-01-11)	<b>Offset TVD Reference:</b>	Offset Datum

Offset Design													Offset Site Error:	0.0ft		
Survey Program: 0-MWD													Thomason 11-16 Pad Sec.16-T2N-R65W - Thomason X #16-11 (Exist.) - Wellbore #1 - Design #1		Offset Well Error:	0.0ft
Reference		Offset		Semi Major Axis			Distance						Warning			
Measured Depth (ft)	Vertical Depth (ft)	Measured Depth (ft)	Vertical Depth (ft)	Reference (ft)	Offset (ft)	Highside Tooface (°)	Offset Wellbore Centre +N/-S (ft)	+E/-W (ft)	Between Centres (ft)	Between Ellipses (ft)	Minimum Separation (ft)	Separation Factor				
0.0	0.0	0.0	0.0	0.0	0.0	-44.46	51.0	-50.0	71.5							
100.0	100.0	97.0	97.0	0.1	0.1	-44.46	51.0	-50.0	71.5	71.2	0.22	322.762				
200.0	200.0	197.0	197.0	0.3	0.3	-44.46	51.0	-50.0	71.5	70.8	0.67	107.047	CC, ES			
300.0	300.0	297.0	297.0	0.6	0.6	-115.70	51.0	-50.0	72.2	71.1	1.11	64.955				
400.0	399.8	396.8	396.8	0.8	0.8	-119.28	51.0	-50.0	74.6	73.1	1.56	47.782				
500.0	499.5	496.5	496.5	1.0	1.0	-109.05	51.0	-50.0	77.8	75.8	2.02	38.454				
600.0	598.9	595.9	595.9	1.3	1.2	-107.93	51.0	-50.0	81.3	78.8	2.51	32.416				
700.0	697.8	694.8	694.8	1.6	1.4	-111.76	51.0	-50.0	86.1	83.1	3.01	28.608				
800.0	796.3	793.3	793.3	2.0	1.7	-118.21	51.0	-50.0	93.6	90.1	3.53	26.544				
908.3	902.1	899.1	899.1	2.4	1.9	-126.28	51.0	-50.0	105.9	101.8	4.09	25.919	SF			
1,000.0	991.5	988.5	988.5	2.8	2.1	-134.25	51.0	-50.0	119.6	115.1	4.54	26.319				
1,100.0	1,088.9	1,085.9	1,085.9	3.2	2.3	-141.02	51.0	-50.0	136.6	131.6	5.03	27.173				
1,200.0	1,186.3	1,183.3	1,183.3	3.7	2.5	-146.27	51.0	-50.0	155.1	149.6	5.50	28.192				
1,300.0	1,283.6	1,280.6	1,280.6	4.1	2.8	-150.39	51.0	-50.0	174.6	168.6	5.97	29.236				
1,400.0	1,381.0	1,378.0	1,378.0	4.6	3.0	-153.67	51.0	-50.0	194.8	188.3	6.44	30.241				
1,500.0	1,478.4	1,475.4	1,475.4	5.1	3.2	-156.34	51.0	-50.0	215.5	208.6	6.91	31.181				
1,600.0	1,575.8	1,572.8	1,572.8	5.5	3.4	-158.54	51.0	-50.0	236.5	229.2	7.38	32.046				
1,700.0	1,673.2	1,670.2	1,670.2	6.0	3.6	-160.39	51.0	-50.0	257.9	250.0	7.85	32.837				
1,800.0	1,770.6	1,767.6	1,767.6	6.5	3.9	-161.95	51.0	-50.0	279.5	271.1	8.33	33.558				
1,900.0	1,867.9	1,864.9	1,864.9	7.0	4.1	-163.28	51.0	-50.0	301.2	292.4	8.80	34.216				
2,000.0	1,965.3	1,962.3	1,962.3	7.4	4.3	-164.44	51.0	-50.0	323.1	313.8	9.28	34.815				
2,100.0	2,062.7	2,059.7	2,059.7	7.9	4.5	-165.45	51.0	-50.0	345.1	335.3	9.76	35.363				
2,200.0	2,160.1	2,157.1	2,157.1	8.4	4.7	-166.34	51.0	-50.0	367.1	356.9	10.24	35.864				
2,300.0	2,257.5	2,254.5	2,254.5	8.9	5.0	-167.13	51.0	-50.0	389.3	378.6	10.72	36.324				
2,400.0	2,354.9	2,351.9	2,351.9	9.3	5.2	-167.83	51.0	-50.0	411.5	400.3	11.20	36.748				
2,500.0	2,452.2	2,449.2	2,449.2	9.8	5.4	-168.46	51.0	-50.0	433.8	422.1	11.68	37.138				
2,600.0	2,549.6	2,546.6	2,546.6	10.3	5.6	-169.04	51.0	-50.0	456.1	443.9	12.16	37.499				
2,700.0	2,647.0	2,644.0	2,644.0	10.8	5.8	-169.55	51.0	-50.0	478.4	465.8	12.65	37.834				
2,800.0	2,744.4	2,741.4	2,741.4	11.2	6.0	-170.02	51.0	-50.0	500.8	487.7	13.13	38.145				
2,900.0	2,841.8	2,838.8	2,838.8	11.7	6.3	-170.45	51.0	-50.0	523.2	509.6	13.61	38.434				
3,000.0	2,939.2	2,936.2	2,936.2	12.2	6.5	-170.85	51.0	-50.0	545.6	531.5	14.10	38.704				
3,100.0	3,036.6	3,033.6	3,033.6	12.7	6.7	-171.21	51.0	-50.0	568.1	553.5	14.58	38.957				
3,200.0	3,133.9	3,130.9	3,130.9	13.2	6.9	-171.55	51.0	-50.0	590.6	575.5	15.07	39.193				
3,300.0	3,231.3	3,228.3	3,228.3	13.6	7.1	-171.86	51.0	-50.0	613.1	597.5	15.55	39.415				
3,400.0	3,328.7	3,325.7	3,325.7	14.1	7.4	-172.15	51.0	-50.0	635.6	619.6	16.04	39.624				
3,500.0	3,426.1	3,423.1	3,423.1	14.6	7.6	-172.42	51.0	-50.0	658.1	641.6	16.53	39.820				
3,600.0	3,523.5	3,520.5	3,520.5	15.1	7.8	-172.67	51.0	-50.0	680.7	663.6	17.01	40.005				
3,700.0	3,620.9	3,617.9	3,617.9	15.5	8.0	-172.91	51.0	-50.0	703.2	685.7	17.50	40.180				
3,800.0	3,718.2	3,715.2	3,715.2	16.0	8.2	-173.13	51.0	-50.0	725.8	707.8	17.99	40.346				
3,900.0	3,815.6	3,812.6	3,812.6	16.5	8.5	-173.34	51.0	-50.0	748.4	729.9	18.48	40.503				
4,000.0	3,913.0	3,910.0	3,910.0	17.0	8.7	-173.54	51.0	-50.0	770.9	752.0	18.96	40.651				
4,100.0	4,010.4	4,007.4	4,007.4	17.5	8.9	-173.72	51.0	-50.0	793.5	774.1	19.45	40.793				
4,200.0	4,107.8	4,104.8	4,104.8	17.9	9.1	-173.89	51.0	-50.0	816.1	796.2	19.94	40.927				
4,300.0	4,205.2	4,202.2	4,202.2	18.4	9.3	-174.06	51.0	-50.0	838.7	818.3	20.43	41.055				
4,400.0	4,302.5	4,299.5	4,299.5	18.9	9.6	-174.22	51.0	-50.0	861.3	840.4	20.92	41.176				
4,447.7	4,349.0	4,346.0	4,346.0	19.1	9.7	-174.29	51.0	-50.0	872.1	851.0	21.15	41.232				
4,500.0	4,400.0	4,397.0	4,397.0	19.3	9.8	-174.38	51.0	-50.0	883.5	862.1	21.43	41.232				
4,600.0	4,498.2	4,495.2	4,495.2	19.7	10.0	-174.54	51.0	-50.0	902.6	880.7	21.91	41.200				
4,700.0	4,596.9	4,593.9	4,593.9	20.0	10.2	-174.66	51.0	-50.0	918.4	896.0	22.36	41.072				
4,800.0	4,696.1	4,693.1	4,693.1	20.2	10.4	-174.76	51.0	-50.0	930.7	907.9	22.78	40.857				
4,900.0	4,795.7	4,792.7	4,792.7	20.4	10.7	-174.82	51.0	-50.0	939.5	916.3	23.16	40.560				
5,000.0	4,895.6	4,892.6	4,892.6	20.6	10.9	-174.86	51.0	-50.0	944.9	921.3	23.51	40.185				

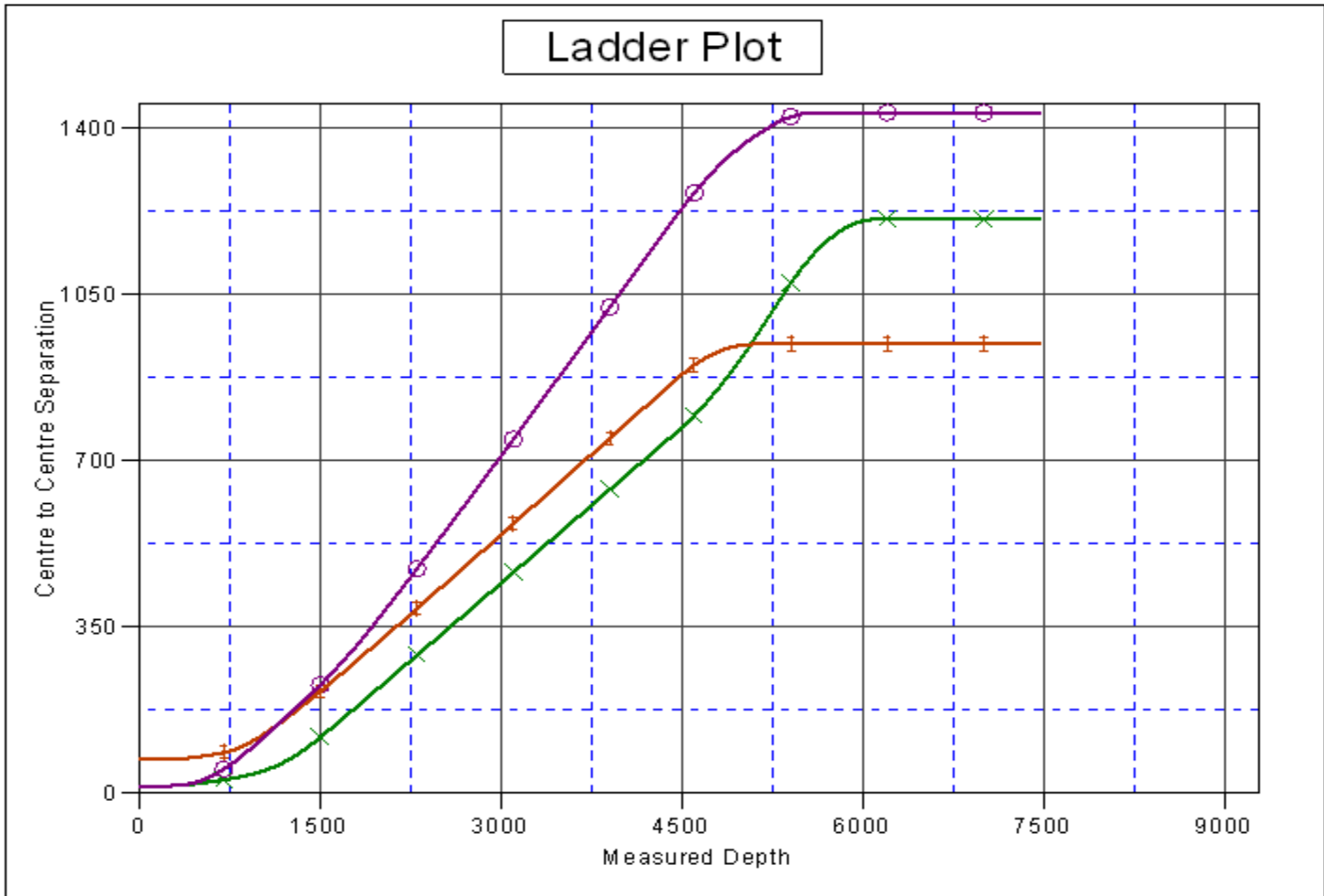
CC - Min centre to center distance or convergent point, SF - min separation factor, ES - min ellipse separation

<b>Company:</b>	Anadarko, Weld County CO	<b>Local Co-ordinate Reference:</b>	Well Thomason 25-16
<b>Project:</b>	SEC.16-T2N-R65W	<b>TVD Reference:</b>	WELL @ 4899.0ft (Original Well Elev)
<b>Reference Site:</b>	Thomason 11-16 Pad Sec.16-T2N-R65W	<b>MD Reference:</b>	WELL @ 4899.0ft (Original Well Elev)
<b>Site Error:</b>	0.0ft	<b>North Reference:</b>	True
<b>Reference Well:</b>	Thomason 25-16	<b>Survey Calculation Method:</b>	Minimum Curvature
<b>Well Error:</b>	0.0ft	<b>Output errors are at</b>	2.00 sigma
<b>Reference Wellbore</b>	Wellbore #1	<b>Database:</b>	Landmark
<b>Reference Design:</b>	Plan #1 (3-01-11)	<b>Offset TVD Reference:</b>	Offset Datum

Offset Design													Offset Site Error:	0.0ft
Survey Program: 0-MWD													Offset Well Error:	0.0ft
Reference		Offset		Semi Major Axis			Distance						Warning	
Measured Depth (ft)	Vertical Depth (ft)	Measured Depth (ft)	Vertical Depth (ft)	Reference (ft)	Offset (ft)	Highside Toolface (°)	Offset Wellbore Centre +N/-S (ft)	+E/-W (ft)	Between Centres (ft)	Between Ellipses (ft)	Minimum Separation (ft)	Separation Factor		
5,104.4	5,000.0	4,997.0	4,997.0	20.7	11.1	-140.80	51.0	-50.0	946.7	922.9	23.84	39.709		
5,200.0	5,095.6	5,092.6	5,092.6	20.8	11.3	-140.80	51.0	-50.0	946.7	922.5	24.22	39.094		
5,300.0	5,195.6	5,192.6	5,192.6	20.9	11.6	-140.80	51.0	-50.0	946.7	922.1	24.63	38.446		
5,400.0	5,295.6	5,292.6	5,292.6	21.0	11.8	-140.80	51.0	-50.0	946.7	921.7	25.04	37.817		
5,500.0	5,395.6	5,392.6	5,392.6	21.2	12.0	-140.80	51.0	-50.0	946.7	921.3	25.45	37.206		
5,600.0	5,495.6	5,492.6	5,492.6	21.3	12.2	-140.80	51.0	-50.0	946.7	920.9	25.86	36.613		
5,700.0	5,595.6	5,592.6	5,592.6	21.4	12.5	-140.80	51.0	-50.0	946.7	920.5	26.27	36.037		
5,800.0	5,695.6	5,692.6	5,692.6	21.5	12.7	-140.80	51.0	-50.0	946.7	920.1	26.69	35.477		
5,900.0	5,795.6	5,792.6	5,792.6	21.6	12.9	-140.80	51.0	-50.0	946.7	919.6	27.10	34.934		
6,000.0	5,895.6	5,892.6	5,892.6	21.8	13.1	-140.80	51.0	-50.0	946.7	919.2	27.52	34.405		
6,100.0	5,995.6	5,992.6	5,992.6	21.9	13.4	-140.80	51.0	-50.0	946.7	918.8	27.93	33.891		
6,200.0	6,095.6	6,092.6	6,092.6	22.0	13.6	-140.80	51.0	-50.0	946.7	918.4	28.35	33.391		
6,300.0	6,195.6	6,192.6	6,192.6	22.2	13.8	-140.80	51.0	-50.0	946.7	918.0	28.77	32.905		
6,400.0	6,295.6	6,292.6	6,292.6	22.3	14.0	-140.80	51.0	-50.0	946.7	917.6	29.19	32.432		
6,500.0	6,395.6	6,392.6	6,392.6	22.4	14.3	-140.80	51.0	-50.0	946.7	917.1	29.61	31.971		
6,600.0	6,495.6	6,492.6	6,492.6	22.6	14.5	-140.80	51.0	-50.0	946.7	916.7	30.03	31.522		
6,700.0	6,595.6	6,592.6	6,592.6	22.7	14.7	-140.80	51.0	-50.0	946.7	916.3	30.46	31.085		
6,800.0	6,695.6	6,692.6	6,692.6	22.8	14.9	-140.80	51.0	-50.0	946.7	915.9	30.88	30.659		
6,900.0	6,795.6	6,792.6	6,792.6	23.0	15.2	-140.80	51.0	-50.0	946.7	915.4	31.30	30.244		
7,000.0	6,895.6	6,892.6	6,892.6	23.1	15.4	-140.80	51.0	-50.0	946.7	915.0	31.73	29.840		
7,100.0	6,995.6	6,992.6	6,992.6	23.3	15.6	-140.80	51.0	-50.0	946.7	914.6	32.15	29.446		
7,200.0	7,095.6	7,092.6	7,092.6	23.4	15.8	-140.80	51.0	-50.0	946.7	914.2	32.58	29.061		
7,300.0	7,195.6	7,192.6	7,192.6	23.5	16.1	-140.80	51.0	-50.0	946.7	913.7	33.00	28.686		
7,400.0	7,295.6	7,292.6	7,292.6	23.7	16.3	-140.80	51.0	-50.0	946.7	913.3	33.43	28.319		
7,464.4	7,360.0	7,357.0	7,357.0	23.8	16.4	-140.80	51.0	-50.0	946.7	913.0	33.71	28.088		

<b>Company:</b>	Anadarko, Weld County CO	<b>Local Co-ordinate Reference:</b>	Well Thomason 25-16
<b>Project:</b>	SEC.16-T2N-R65W	<b>TVD Reference:</b>	WELL @ 4899.0ft (Original Well Elev)
<b>Reference Site:</b>	Thomason 11-16 Pad Sec.16-T2N-R65W	<b>MD Reference:</b>	WELL @ 4899.0ft (Original Well Elev)
<b>Site Error:</b>	0.0ft	<b>North Reference:</b>	True
<b>Reference Well:</b>	Thomason 25-16	<b>Survey Calculation Method:</b>	Minimum Curvature
<b>Well Error:</b>	0.0ft	<b>Output errors are at</b>	2.00 sigma
<b>Reference Wellbore</b>	Wellbore #1	<b>Database:</b>	Landmark
<b>Reference Design:</b>	Plan #1 (3-01-11)	<b>Offset TVD Reference:</b>	Offset Datum

Reference Depths are relative to WELL @ 4899.0ft (Original Well Elev) Coordinates are relative to: Thomason 25-16  
 Offset Depths are relative to Offset Datum Coordinate System is US State Plane 1983, Colorado Northern Zone  
 Central Meridian is -105.500000 ° Grid Convergence at Surface is: 0.54°

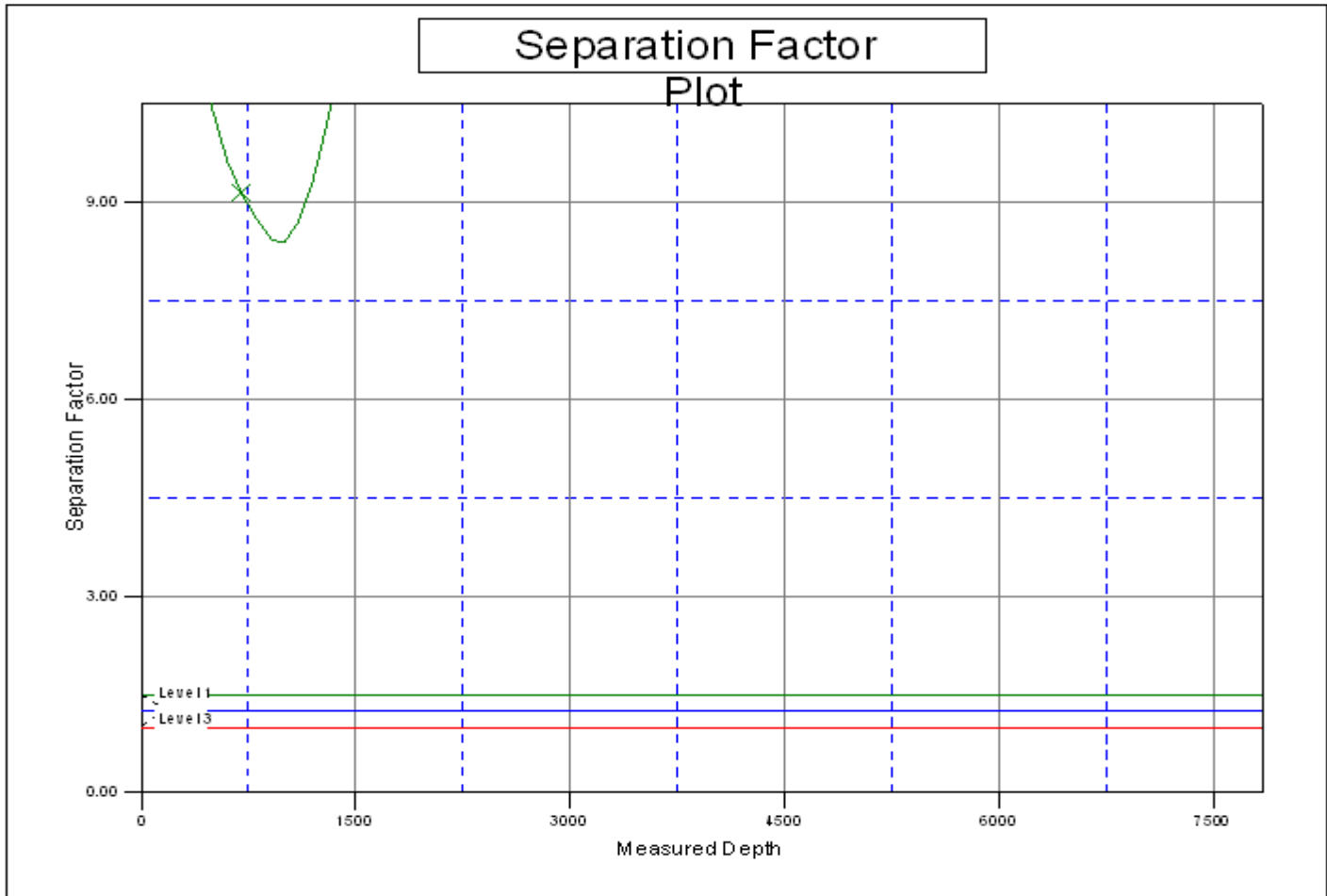


LEGEND

on 21-16, Wellbore #1, Plan #1 (3-01-11) V0 —+— Thomason X #16-11 (Exist.), Wellbore #1, Design #1 —x— Thomason 23-16, Wellbore #1, Plan #1

<b>Company:</b>	Anadarko, Weld County CO	<b>Local Co-ordinate Reference:</b>	Well Thomason 25-16
<b>Project:</b>	SEC.16-T2N-R65W	<b>TVD Reference:</b>	WELL @ 4899.0ft (Original Well Elev)
<b>Reference Site:</b>	Thomason 11-16 Pad Sec.16-T2N-R65W	<b>MD Reference:</b>	WELL @ 4899.0ft (Original Well Elev)
<b>Site Error:</b>	0.0ft	<b>North Reference:</b>	True
<b>Reference Well:</b>	Thomason 25-16	<b>Survey Calculation Method:</b>	Minimum Curvature
<b>Well Error:</b>	0.0ft	<b>Output errors are at</b>	2.00 sigma
<b>Reference Wellbore</b>	Wellbore #1	<b>Database:</b>	Landmark
<b>Reference Design:</b>	Plan #1 (3-01-11)	<b>Offset TVD Reference:</b>	Offset Datum

Reference Depths are relative to WELL @ 4899.0ft (Original Well Elev) Coordinates are relative to: Thomason 25-16  
 Offset Depths are relative to Offset Datum Coordinate System is US State Plane 1983, Colorado Northern Zone  
 Central Meridian is -105.500000 ° Grid Convergence at Surface is: 0.54°



LEGEND

on 21-16, Wellbore #1, Plan #1 (3-01-11) VD Thomason X #16-11 (Exist.), Wellbore #1, Design #1 Thomason 23-16, Wellbore #1, Plan #1