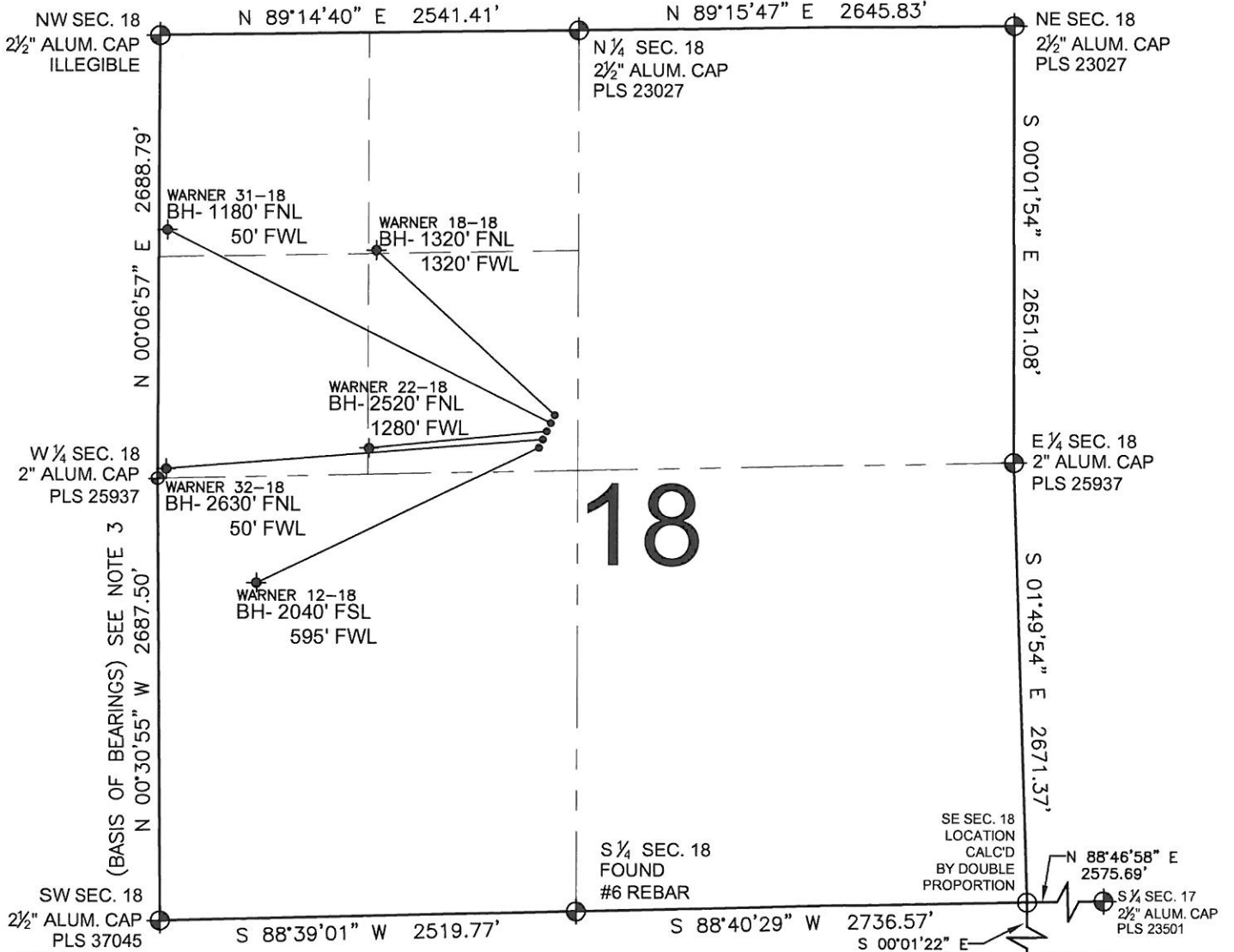


PAD DRAWING - WARNER 5 PAD

SECTION 18, TOWNSHIP 2 NORTH, RANGE 65 WEST, 6TH P.M.



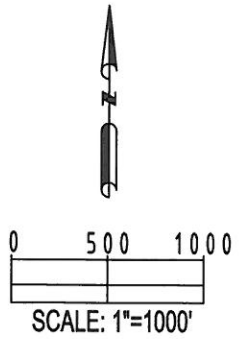
18

LEGEND

- ⊕ = EXISTING MONUMENT
- ⊙ = PROPOSED WELL
- ⬥ = BOTTOM HOLE
- ⬧ = EXISTING WELL
- BH= BOTTOM HOLE

- NOTES:**
- THIS SURVEY WAS DONE BY GPS METHODS AND CONFORMS TO THE MINIMUM STANDARDS SET BY THE C.O.G.C.C., RULE NO. 215
 - ELEVATIONS SHOWN AT THE WELL HEAD, AS WELL AS HORIZONTAL CONTROL, ARE BASED ON GPS-RTK VALUES DERIVED FROM DOING 2-HOUR STATIC GPS SESSIONS AND REDUCTIONS USING O.P.U.S. SOLUTIONS.
VERTICAL = NAVD88; HORIZONTAL = NAD83/92
 - THE BEARINGS SHOWN HEREON ARE BASED ON GPS OBSERVATIONS BETWEEN THE MONUMENTS SHOWN HEREON AS FOUND ON THE FIELD DATE BELOW.
 - DISTANCES SHOWN ARE AT GROUND LEVEL, AS MEASURED IN THE FIELD, WITH TIES TO WELLS MEASURED AT A PERPENDICULAR TO SECTION LINES.

- NOTES:**
- WARNER 18-18 TO BE AT 2401' FNL, 2372' FWL. BOTTOM HOLE AT 1320' FNL & 1320' FWL.
 - WARNER 31-18 TO BE AT 2416' FNL, 2365' FWL. BOTTOM HOLE AT 1180' FNL & 50' FWL.
 - WARNER 22-18 TO BE AT 2430' FNL, 2358' FWL. BOTTOM HOLE AT 2520' FNL & 1280' FWL.
 - WARNER 32-18 TO BE AT 2444' FNL, 2351' FWL. BOTTOM HOLE AT 2630' FNL & 50' FWL.
 - WARNER 12-18 TO BE AT 2459' FNL, 2344' FWL. BOTTOM HOLE AT 2040' FSL & 595' FWL.



REVISIONS	
INITIAL	DATE

PREPARED BY:

PFS
Petroleum Field Services, LLC.
1801 W. 13th Ave.
Denver, CO 80204

KERR-MCGEE OIL & GAS ONSHORE LP

FIELD DATE: 10-27-10	PAD NAME: WARNER 5 PAD
DRAWING DATE: 11-13-10	SURFACE LOCATION:
BY: SMF	WELD COUNTY, COLORADO SE 1/4 NW 1/4, SEC. 18, T2N, R65W