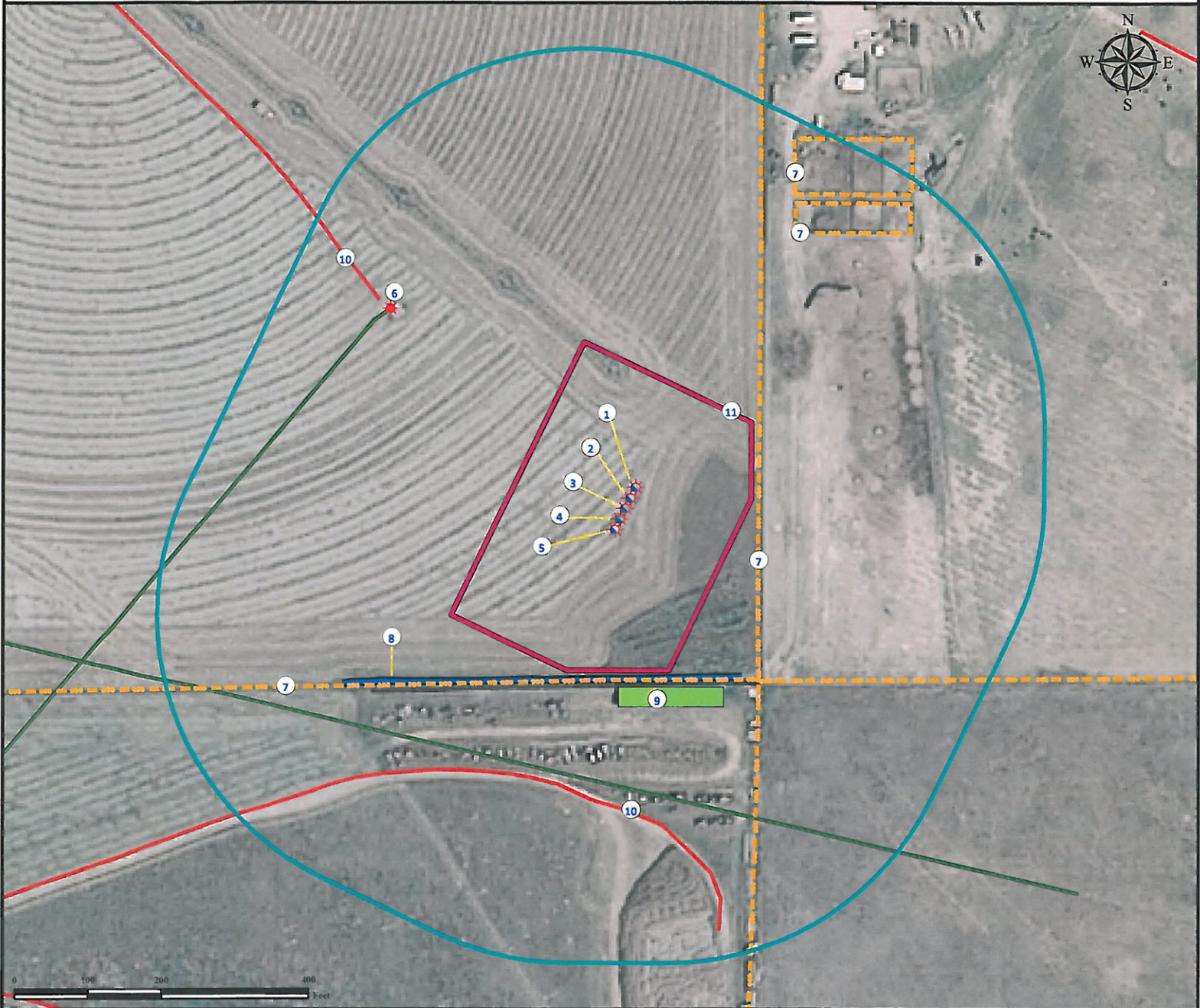


# Location Drawing

## WARNER 22-18

### Multi Well Pad

**SE¼ NW¼ SECTION 18, TOWNSHIP 2 NORTH, RANGE 65 WEST OF THE 6TH PRINCIPAL MERIDIAN**



- |   |   |
|---|---|
| <ol style="list-style-type: none"> <li>1. Proposed well WARNER 18-18.</li> <li>2. Proposed well WARNER 31-18.</li> <li>3. Proposed well WARNER 22-18.</li> <li>4. Proposed well WARNER 32-18.</li> <li>5. Proposed well WARNER 12-18.</li> <li>6. Existing well HSR-WARNER 6-18 is ±419' NW.</li> </ol> | <ol style="list-style-type: none"> <li>7. Fences are ±230' S, ±181' E, ±440' NE and ±486' NE.</li> <li>8. Ditch is ±230' S. This feature was dry and nonbermed at the time of mapping.</li> <li>9. Outbuilding (Open Shelter) is ±245' S.</li> <li>10. Private roads are ±388' SW and ±438' NW.</li> <li>11. Operational Disturbance Area.</li> </ol> |
|---|---|

#### Legend

- |  |  |  |
|--|--|--|
| <ul style="list-style-type: none"> <li> Proposed Well</li> <li> Existing Well</li> <li> Ditch</li> </ul> | <ul style="list-style-type: none"> <li> Disturbance Area</li> <li> 400' Radius</li> <li> Building/Residence</li> </ul> | <ul style="list-style-type: none"> <li> Fence</li> <li> Private Road</li> <li> Underground Pipeline</li> </ul> |
|--|--|--|

#### Reference Location

\*\* All Measurements are Made from Reference Well WARNER 22-18\*  
 Lat: 40.139259° Long:-104.707483° (NAD83)  
 Elevation: 4984 Feet

Surface Use: Irrigated Crop



*Use our resources to find yours!*  
[www.petro-fs.com](http://www.petro-fs.com)  
 (303) 928-7128

Field Date: 10/27/2010  
 Drafting Date: 12/03/2010  
 Drafter: DMM  
 Checked By: BHF

Data Sources:  
 - Aerial courtesy of NAIP (2009)

Prepared for:

**KERR-MCGEE OIL & GAS ONSHORE LP**