
OXY GRAND JUNCTION EBUSINESS

**CC 697-09-25B
GRAND VALLEY
Garfield County , Colorado**

Cement Surface Casing
12-Jan-2011

Post Job Report

The Road to Excellence Starts with Safety

Sold To #: 344034		Ship To #: 2829737		Quote #:		Sales Order #: 7841548	
Customer: OXY GRAND JUNCTION EBUSINESS				Customer Rep: Silva, Marco			
Well Name: CC			Well #: 697-09-25B			API/UWI #: 05-045-18354	
Field: GRAND VALLEY		City (SAP): PARACHUTE		County/Parish: Garfield		State: Colorado	
Lat: N 39.536 deg. OR N 39 deg. 32 min. 10.118 secs.				Long: W 108.238 deg. OR W -109 deg. 45 min. 44.748 secs.			
Contractor: H&P 330			Rig/Platform Name/Num: H&P 330				
Job Purpose: Cement Surface Casing							
Well Type: Development Well			Job Type: Cement Surface Casing				
Sales Person: DUNNING, DUSTIN			Srvc Supervisor: LEIST, JAMES			MBU ID Emp #: 362787	

Job Personnel

HES Emp Name	Exp Hrs	Emp #	HES Emp Name	Exp Hrs	Emp #	HES Emp Name	Exp Hrs	Emp #
BLUST, CHARLES Thomas	12	386662	JENSEN, JESSE Robert	6	478774	JENSEN, SHANE Lynn	12	441759
LEIST, JAMES R	12	362787	MILLER, KEVIN Paul	6	443040	STEELE, BENJAMIN F	12	458599
YUTZY, BRIAN Matthew	12	478510	ZUMWALT, ORVILLE Raymond	6	398157			

Equipment

HES Unit #	Distance-1 way	HES Unit #	Distance-1 way	HES Unit #	Distance-1 way	HES Unit #	Distance-1 way
10533645	120 mile	10592964	120 mile	10616651C	120 mile	10713212	120 mile
10783473	120 mile	10856464	120 mile	10995025	120 mile	11139330	120 mile
11259883	120 mile						

Job Hours

Date	On Location Hours	Operating Hours	Date	On Location Hours	Operating Hours	Date	On Location Hours	Operating Hours
1-10-11	24	0	1-11-11	24	8	1-12-11	5	2

TOTAL Total is the sum of each column separately

Job

Formation Name	Job	Job Times
Formation Depth (MD) Top	Bottom	Date Time Time Zone
Form Type	BHST	Called Out 09 - Jan - 2011 20:00 MST
Job depth MD 2730. ft	Job Depth TVD 2730. ft	On Location 10 - Jan - 2011 05:00 MST
Water Depth	Wk Ht Above Floor 4. ft	Job Started 11 - Jan - 2011 02:15 MST
Perforation Depth (MD) From	To	Job Completed 12 - Jan - 2011 01:26 MST
		Departed Loc 12 - Jan - 2011 05:00 MST

Well Data

Description	New / Used	Max pressure psig	Size in	ID in	Weight lbm/ft	Thread	Grade	Top MD ft	Bottom MD ft	Top TVD ft	Bottom TVD ft
14 3/4" Open Hole				14.75				.	2730.		
9 5/8" Surface Casing	Unknown		9.625	8.921	36.			.	2730.		

Sales/Rental/3rd Party (HES)

Description	Qty	Qty uom	Depth	Supplier
PLUG,CMTG,TOP,9 5/8,HWE,8.16 MIN/9.06 MA	1	EA		

Tools and Accessories

Type	Size	Qty	Make	Depth	Type	Size	Qty	Make	Depth	Type	Size	Qty	Make
Guide Shoe					Packer					Top Plug	9.625	1	
Float Shoe					Bridge Plug					Bottom Plug			
Float Collar					Retainer					SSR plug set			
Insert Float										Plug Container	9.625	1	
Stage Tool										Centralizers			

Miscellaneous Materials													
Gelling Agt		Conc		Surfactant		Conc		Acid Type		Qty		Conc	%
Treatment Fld		Conc		Inhibitor		Conc		Sand Type		Size		Qty	
Fluid Data													
Stage/Plug #: 1													
Fluid #	Stage Type	Fluid Name			Qty	Qty uom	Mixing Density lbm/gal	Yield ft ³ /sk	Mix Fluid Gal/sk	Rate bbl/min	Total Mix Fluid Gal/sk		
1	Water Spacer				20.00	bbl	8.33	.0	.0	.0			
2	Gel Spacer				20.00	bbl	.	.0	.0	.0			
3	Water Spacer				20.00	bbl	.	.0	.0	.0			
4	VersaCem Lead Cement	VERSACEM (TM) SYSTEM (452010)			1070.0	sacks	12.3	2.33	12.62		12.62		
	12.62 Gal	FRESH WATER											
5	VersaCem Tail Cement	VERSACEM (TM) SYSTEM (452010)			160.0	sacks	12.8	2.07	10.67		10.67		
	10.67 Gal	FRESH WATER											
6	Displacement				207.00	bbl	.	.0	.0	.0			
7	HalCem Top Out Slurry	HALCEM (TM) SYSTEM (452986)			600.0	sacks	12.5	1.97	10.96		10.96		
	10.96 Gal	FRESH WATER											
Calculated Values			Pressures			Volumes							
Displacement	207	Shut In: Instant			Lost Returns			Cement Slurry		499	Pad		
Top Of Cement	SURFACE	5 Min			Cement Returns		0	Actual Displacement			Treatment		
Frac Gradient		15 Min			Spacers		60	Load and Breakdown			Total Job		
Rates													
Circulating		Mixing			6	Displacement			6	Avg. Job		6	
Cement Left In Pipe	Amount	29 ft	Reason	Shoe Joint									
Frac Ring # 1 @	ID		Frac ring # 2 @	ID		Frac Ring # 3 @	ID		Frac Ring # 4 @	ID			
The Information Stated Herein Is Correct					Customer Representative Signature								

The Road to Excellence Starts with Safety

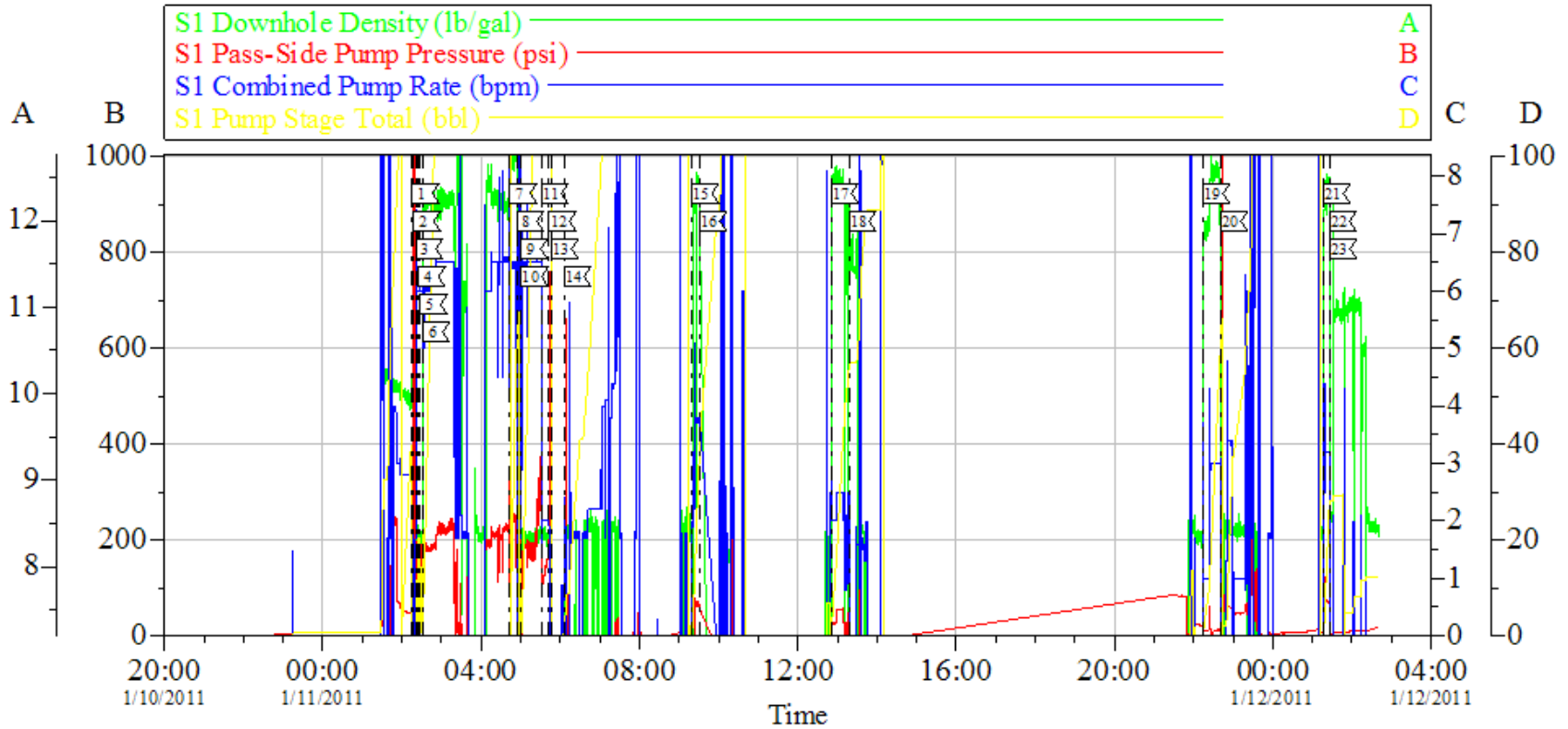
Sold To #: 344034	Ship To #: 2829737	Quote #:	Sales Order #: 7841548
Customer: OXY GRAND JUNCTION EBUSINESS		Customer Rep: Silva, Marco	
Well Name: CC	Well #: 697-09-25B	API/UWI #: 05-045-18354	
Field: GRAND VALLEY	City (SAP): PARACHUTE	County/Parish: Garfield	State: Colorado
Legal Description:			
Lat: N 39.536 deg. OR N 39 deg. 32 min. 10.118 secs.		Long: W 108.238 deg. OR W -109 deg. 45 min. 44.748 secs.	
Contractor: H&P 330		Rig/Platform Name/Num: H&P 330	
Job Purpose: Cement Surface Casing			Ticket Amount:
Well Type: Development Well		Job Type: Cement Surface Casing	
Sales Person: DUNNING, DUSTIN		Srv Supervisor: LEIST, JAMES	MBU ID Emp #: 362787

Activity Description	Date/Time	Cht #	Rate bbl/min	Volume bbl		Pressure psig		Comments
				Stage	Total	Tubing	Casing	
Call Out	01/09/2011 20:00							TP-2711, TD-2730, S.J.-29, MUD#-8.8, HOLE-14 3/4
Pre-Convoy Safety Meeting	01/10/2011 01:00							WITH ALL HES PERSONNEL
Crew Leave Yard	01/10/2011 01:30							
Arrive At Loc	01/10/2011 05:00							RUNNING CASING, GOT RIGED UP HAD TO CALL FOR NEW PUMP TRUCK WHEN NEW PUMP GOT HEAR THE BELT ON MOTOR WAS BUSTED OFF. WE GOT NEW ONE AND REPLACED, RIG HAD PROBLEMS BEING FROZE UP WHILE THIS WAS ALL TAKING PLACE.
Assessment Of Location Safety Meeting	01/10/2011 06:00							WITH ALL HES PERSONNEL
Pre-Rig Up Safety Meeting	01/10/2011 06:10							WITH ALL HES PERSONNEL
Rig-Up Completed	01/10/2011 07:00							
Pre-Job Safety Meeting	01/11/2011 01:45							WITH ALL ON LOCATION PERSONNEL
Start Job	01/11/2011 02:15							NO CIRULATION AT ANY POINT DURING THE JOB, NO PIPE MOVEMENT DURING JOB
Pressure Test	01/11/2011 02:17							3300 PSI

Activity Description	Date/Time	Cht #	Rate bbl/min	Volume bbl		Pressure psig		Comments
				Stage	Total	Tubing	Casing	
Pump Spacer 1	01/11/2011 02:20		6	20			100.0	FRESH WATER
Pump Spacer 1	01/11/2011 02:24		6	20			135.0	GEL SPACER
Pump Spacer 1	01/11/2011 02:28		6	20			128.0	FRESH WATER
Pump Lead Cement	01/11/2011 02:31		6	444			220.0	1070 SKS 12.3 PPG, 2.33 FT3/SK, 12.62 GAL/SK, HAD TO SHUT DOWN DUE TO OPERATOR ERROR HAD ISSUE WITH DRY CMT IN MIXING TUB GOT THE PROBLEM FIXED AND RESUMED PUMPING
Pump Tail Cement	01/11/2011 04:45		6	58			246.0	160 SKS, 12.8 PPG, 2.07 FT3/SK, 10.67 GAL/SK
Shutdown	01/11/2011 04:53							
Drop Top Plug	01/11/2011 04:59							AWAY
Pump Displacement	01/11/2011 05:01		6	207			236.0	FRESH WATER
Slow Rate	01/11/2011 05:30		2	187			120.0	TO BUMP PLUG
Bump Plug	01/11/2011 05:43		2	207			280.0	PLUG BUMPED
Check Floats	01/11/2011 05:46						857.0	THE FLOATS ARE HOLDING
Other	01/11/2011 06:05					478.0		PUMP PARASITE STRING
Pump Cement	01/11/2011 09:10		3	50			78.0	150 SKS, 12.5 PPG, 1.97 FT3/SK, 10.96 GAL/SK, TOP OUT CMT, RAN ONE IN. PROVIDED BY RIG
Shutdown	01/11/2011 09:31							WASH UP
Pump Cement	01/11/2011 12:50		2.5	50			72.0	150 SKS, 12.5 PPG, 1.97 FT3/SK, 10.96 GAL/SK, TOP OUT CMT
Shutdown	01/11/2011 13:17							WASH UP

Activity Description	Date/Time	Cht #	Rate bbl/ min	Volume bbl		Pressure psig		Comments
				Stage	Total	Tubing	Casing	
Pump Cement	01/11/2011 22:14		3	50			80.0	150 SKS, 12.5 PPG, 1.97 FT3/SK, 10.96 GAL/SK, TOP OUT CMT
Shutdown	01/11/2011 22:41							WASH UP
Pump Cement	01/12/2011 01:17		3	32			68.0	91 SKS, 12.5 PPG, 1.97 FT3/SK, 10.96 GAL/SK, TOP OUT CMT, CMT TO SURFACE
Shutdown	01/12/2011 01:26							WASH UP
End Job	01/12/2011 01:27							
Pre-Rig Down Safety Meeting	01/12/2011 02:00							WITH ALL HES PERSONNEL
Rig-Down Completed	01/12/2011 04:00							
Pre-Convoy Safety Meeting	01/12/2011 04:30							WITH ALL HES PERSONNEL
Crew Leave Location	01/12/2011 05:00							
Comment	01/12/2011 05:00							THANKYOU FOR USING HALLIBURTON CEMENT, JAMES LEIST AND CREW

OXY TOP OUT 4



Local Event Log					
1	START JOB	1/11/2011 02:15:33	2	PRESSURE TEST	1/11/2011 02:17:35
3	PUMP H2O SPACER	1/11/2011 02:20:44	4	PUMP GEL SPACER	1/11/2011 02:24:40
5	PUMP H2O SPACER	1/11/2011 02:28:03	6	PUMP LEAD CMT	1/11/2011 02:31:34
7	PUMP TAIL CMT	1/11/2011 04:43:46	8	SHUTDOWN	1/11/2011 04:53:54
9	DROP TOP PLUG	1/11/2011 04:59:39	10	PUMP DISPLACEMENT	1/11/2011 05:01:01
11	SLOW RATE	1/11/2011 05:30:59	12	BUMP PLUG	1/11/2011 05:43:11
13	CHECK FLOATS	1/11/2011 05:46:29	14	PUMP PARASITE	1/11/2011 06:05:30
15	PUMP TOP OUT	1/11/2011 09:19:25	16	SHUTDOWN	1/11/2011 09:31:22
17	PUMP TOP OUT	1/11/2011 12:50:41	18	SHUTDOWN	1/11/2011 13:17:49
19	PUMP TOP OUT	1/11/2011 22:14:16	20	SHUTDOWN	1/11/2011 22:41:22
21	PUMP TOP OUT	1/12/2011 01:17:04	22	SHUTDOWN	1/12/2011 01:26:08
23	END JOB	1/12/2011 01:26:33			

Customer: OXY	Job Date: 10-Jan-2011	Sales Order #: 7841548	HALLIBURTON OptiCem v6.3.4 12-Jan-11 02:40
Well Description: CC 697-09-25B	Job Type: SURFACE	ADC Used: YES	
Company Rep: MARCO SILVA	Cement Supervisor: JAMES LEIST	Elite #1: BEN STEELE	