
OXY GRAND JUNCTION EBUSINESS

**CC 697-08-39
GRAND VALLEY
Garfield County , Colorado**

Cement Surface Casing
28-Dec-2010

Post Job Summary

The Road to Excellence Starts with Safety

Sold To #: 344034	Ship To #: 2827471	Quote #:	Sales Order #: 7842716
Customer: OXY GRAND JUNCTION EBUSINESS	Customer Rep: BENAVIDES, VICTOR		
Well Name: CC	Well #: 697-08-39	API/UWI #: 05-045-18350	
Field: GRAND VALLEY	City (SAP): PARACHUTE	County/Parish: Garfield	State: Colorado
Lat: N 39.536 deg. OR N 39 deg. 32 min. 10.234 secs.	Long: W 108.238 deg. OR W -109 deg. 45 min. 44.698 secs.		
Contractor: H&P 330	Rig/Platform Name/Num: H&P 330		
Job Purpose: Cement Surface Casing			
Well Type: Development Well	Job Type: Cement Surface Casing		
Sales Person: DUNNING, DUSTIN	Srvc Supervisor: STILLSON, ERIC	MBU ID Emp #: 393789	

Job Personnel

HES Emp Name	Exp Hrs	Emp #	HES Emp Name	Exp Hrs	Emp #	HES Emp Name	Exp Hrs	Emp #
ANGLESTEIN, TROY Edward WM	20	436099	BLUST, CHARLES Thomas	20	386662	HAMMOND, ANSON Perry	20	421370
NICKLE, RYON	20	454759	STILLSON, ERIC W	20	393789			

Equipment

HES Unit #	Distance-1 way	HES Unit #	Distance-1 way	HES Unit #	Distance-1 way	HES Unit #	Distance-1 way
10025061	120 mile	10248065	120 mile	10533645	120 mile	10567589C	120 mile
10951246	120 mile	10995025	120 mile	11139328	120 mile		

Job Hours

Date	On Location Hours	Operating Hours	Date	On Location Hours	Operating Hours	Date	On Location Hours	Operating Hours
12-27-10	10	5	12-28-10	10	2			

TOTAL Total is the sum of each column separately

Job

Formation Name	Formation Depth (MD)	Top	Bottom	Form Type	Job depth MD	Water Depth	Perforation Depth (MD)	From	To
				BHST	2688. ft				
					Job Depth TVD	2688. ft			
					Wk Ht Above Floor	4. ft			

Job Times

Called Out	Date	Time	Time Zone
On Location	27 - Dec - 2010	06:00	MST
Job Started	27 - Dec - 2010	14:00	MST
Job Completed	27 - Dec - 2010	19:48	MST
Departed Loc	28 - Dec - 2010	08:00	MST
	28 - Dec - 2010	10:00	MST

Well Data

Description	New / Used	Max pressure psig	Size in	ID in	Weight lbm/ft	Thread	Grade	Top MD ft	Bottom MD ft	Top TVD ft	Bottom TVD ft
OPEN HOLE SECTION				14.75				.	2708.		
SURFACE CASING	Unknown		9.625	8.921	36.			.	2688.		

Tools and Accessories

Type	Size	Qty	Make	Depth	Type	Size	Qty	Make	Depth	Type	Size	Qty	Make
Guide Shoe					Packer					Top Plug	9.625	1	
Float Shoe					Bridge Plug					Bottom Plug			
Float Collar					Retainer					SSR plug set			
Insert Float										Plug Container	9.625	1	
Stage Tool										Centralizers			

Miscellaneous Materials

Gelling Agt	Treatment Fld	Conc	Conc	Surfactant	Inhibitor	Conc	Conc	Acid Type	Sand Type	Qty	Size	Conc	%

Fluid Data									
Stage/Plug #: 1									
Fluid #	Stage Type	Fluid Name	Qty	Qty uom	Mixing Density lbm/gal	Yield ft ³ /sk	Mix Fluid Gal/sk	Rate bbl/min	Total Mix Fluid Gal/sk
1	Water Spacer		20.00	bbl	8.33	.0	.0	5.0	
2	GEL WATER		20.00	bbl	8.4	.0	.0	5.0	
3	Water Spacer		20.00	bbl	8.33	.0	.0	5.0	
4	Lead Cement	VERSACEM (TM) SYSTEM (452010)	1075.0	sacks	12.3	2.33	12.62	5.0	12.62
		12.62 Gal	FRESH WATER						
5	Tail Cement	VERSACEM (TM) SYSTEM (452010)	160.0	sacks	12.8	2.07	10.67	5.0	10.67
		10.67 Gal	FRESH WATER						
6	Displacement		201.00	bbl	8.33	.0	.0	5.0	
Calculated Values		Pressures		Volumes					
Displacement	203.7	Shut In: Instant		Lost Returns	668	Cement Slurry	581	Pad	
Top Of Cement	SURFACE	5 Min		Cement Returns	7	Actual Displacement	201	Treatment	
Frac Gradient		15 Min		Spacers	60	Load and Breakdown		Total Job	
Rates									
Circulating	RIG	Mixing	5	Displacement	5	Avg. Job	5		
Cement Left In Pipe	Amount	53 ft	Reason	Shoe Joint					
Frac Ring # 1 @	ID	Frac ring # 2 @	ID	Frac Ring # 3 @	ID	Frac Ring # 4 @	ID		
The Information Stated Herein Is Correct				Customer Representative Signature					

The Road to Excellence Starts with Safety

Sold To #: 344034		Ship To #: 2827471		Quote #:		Sales Order #: 7842716	
Customer: OXY GRAND JUNCTION EBUSINESS				Customer Rep: BENAVIDES, VICTOR			
Well Name: CC			Well #: 697-08-39			API/UWI #: 05-045-18350	
Field: GRAND VALLEY		City (SAP): PARACHUTE		County/Parish: Garfield		State: Colorado	
Legal Description:							
Lat: N 39.536 deg. OR N 39 deg. 32 min. 10.234 secs.				Long: W 108.238 deg. OR W -109 deg. 45 min. 44.698 secs.			
Contractor: H&P 330			Rig/Platform Name/Num: H&P 330				
Job Purpose: Cement Surface Casing						Ticket Amount:	
Well Type: Development Well			Job Type: Cement Surface Casing				
Sales Person: DUNNING, DUSTIN			Srv Supervisor: STILLSON, ERIC			MBU ID Emp #: 393789	

Activity Description	Date/Time	Cht #	Rate bbl/min	Volume bbl		Pressure psig		Comments
				Stage	Total	Tubing	Casing	
Call Out	12/27/2010 06:00							9 5/8 SURFACE, OXY, H&P 330, CC 697-08-39.
Pre-Convoy Safety Meeting	12/27/2010 09:30							ENTIRE CREW, OBSERVE ALL SAFE DRIVING PROCEDURES
Arrive At Loc	12/27/2010 14:00							RIG RUNNING CASING.
Assessment Of Location Safety Meeting	12/27/2010 14:15							REVIEWED EMERGENCY PLAN, ASSESSED WORK AREA AND SPOTTED EQUIPMENT.
Pre-Rig Up Safety Meeting	12/27/2010 14:55							ENTIRE CREW, WALKED THROUGH RIG UP LOOKING FOR HAZARDS.
Rig-Up Equipment	12/27/2010 15:00							1 PICK UP, 1 HT400 PUMP TRUCK, 2 660 BULK CEMENT TRUCKS, 1 BULK CEMENT STORAGE BIN, 1 QUICK LATCH HEAD WITH PLUG.
Pre-Job Safety Meeting	12/27/2010 19:25							ENTIRE CREW, CO REP AND RIG CREW.
Start Job	12/27/2010 19:48							TD 2708 TP 2688 SJ 53 FC 2635 MW 8.8 PPG, 9 5/8 36# CASING IN 14 3/4 HOLE, PARASITE SET AT 2498.
Pump Water	12/27/2010 19:49		2	2			70.0	FILL LINES BEFORE TESTING

Activity Description	Date/Time	Cht #	Rate bbl/min	Volume bbl		Pressure psig		Comments
				Stage	Total	Tubing	Casing	
Pressure Test	12/27/2010 19:51		0.5	0.1			2960.0	HELD PRESSURE FOR 2 MIN, PRESSURE HELD, NO LEAKS.
Pump Spacer 1	12/27/2010 19:54		4	20			200.0	FRESH WATER, PREMIXED CEMENT TUB AND WEIGHED WITH SCALES.
Pump Spacer 2	12/27/2010 20:01		5	20			200.0	GEL SPACER, 20 BBLS WATER WITH 5 GAL LGC MIXED IN TANKS, SPED TO 5 BPM AT 11 BBLS GONE.
Pump Spacer 1	12/27/2010 20:05		5	20			250.0	FRESH WATER,
Pump Lead Cement	12/27/2010 20:09		5	446			300.0	1075 SKS VERSACEM, 12.3 PPG, 2.33 CUFT/SK, 12.62 GAL/SK, 7 BOXES TUFF FIBER MIXED IN DOWNHOLE SIDE ON FLY. SPED TO 6 BPM TO SEE IF CEMENT WOULD GO DOWNHOLE BETTER, BBL COUNTER OFF DUE TO CEMENT NOT GOING DOWN AS QUICK, BBL COUNTER READ 503 BBLS PUMPED.
Pump Tail Cement	12/27/2010 21:40		5	59			310.0	160 SKS VERSACEM, 12.8 PPG, 2.07 CUFT/SK, 10.67 GAL/SK, BBL COUNTER READ 66 BBLS PUMPED.
Shutdown	12/27/2010 21:51							HAD RETURNS FOR APPROX 100 BBLS AT THE START OF THE JOB, NO RETURNS REST OF THE TIME. DID NOT RECIPROCATATE PIPE.
Drop Top Plug	12/27/2010 21:54							VARIIFIED PLUG LEFT CONTAINER.

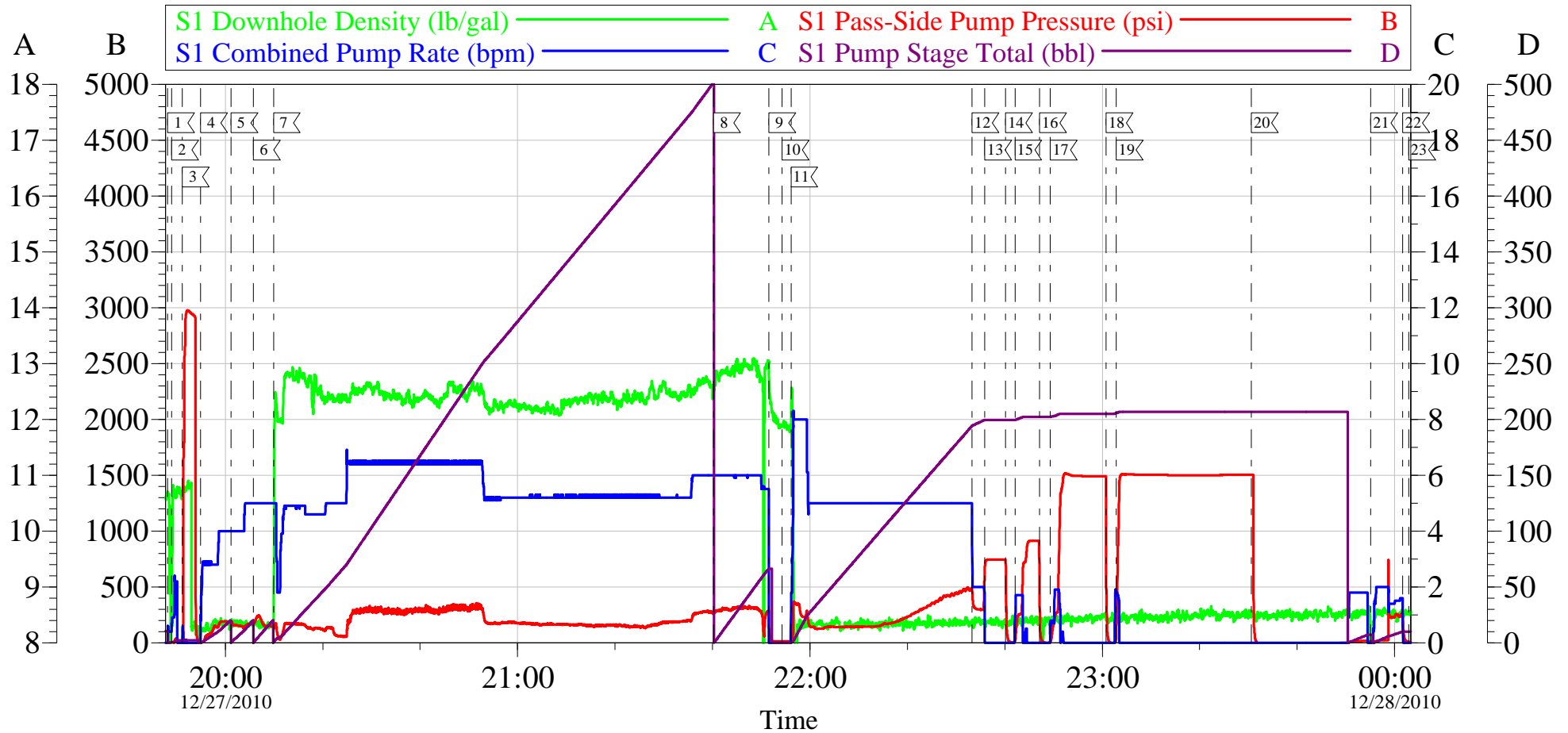
Activity Description	Date/Time	Cht #	Rate bbl/ min	Volume bbl		Pressure psig		Comments
				Stage	Total	Tubing	Casing	
Pump Displacement	12/27/2010 21:56		5	203.7			500.0	FRESH WATER, PUMPED AT 8 BPM UNTIL CAUGHT PRESSURE AT 25 BBLs GONE, THEN SLOWED TO 5 BPM.
Slow Rate	12/27/2010 22:33		2	193			300.0	SLOWED RATE TO 2 BPM TO BUMP PLUG.
Bump Plug	12/27/2010 22:35		2	201			740.0	PLUG LANDED AT 201 BBLs GONE AT 300 PSI, BUMPED UP TO 740 PSI AND HELD FOR 5 MIN PER CO REP.
Check Floats	12/27/2010 22:40							FLOATS DID NOT HOLD, WHEN RELEASED PRESSURE GOT 2 BBL OF WATER BACK TO TRUCK.
Bump Plug	12/27/2010 22:42		2	2			900.0	REBUMPED PLUG UP TO 900 PSI AND HELD FOR 5 MIN.
Check Floats	12/27/2010 22:47							FLOATS NOT HOLDING AGAIN, 2.5 BBLs OF WATER BACK TO TRUCK
Bump Plug	12/27/2010 22:49		2	2.5			1512. 0	REBUMPED PLUG UP TO 1512 PSI AND HELD FOR 10 MIN,
Check Floats	12/27/2010 23:00							FLOATS HELD THIS TIME, GOT 1 BBL WATER BACK TO TRUCK.
Pressure Up	12/27/2010 23:02		2	1			1503. 0	PRESSURE UP AND HOLD FOR 30 MIN. TO TEST CASING
Release Casing Pressure	12/27/2010 23:32							RELEASED PRESSURE AT 1502 PSI. GOOD TEST.
Safety Huddle	12/27/2010 23:33							RIG UP IRON TO CELLAR TO PUMP THROUGH PARASITE.

Activity Description	Date/Time	Cht #	Rate bbl/ min	Volume bbl		Pressure psig		Comments
				Stage	Total	Tubing	Casing	
Pump Water	12/27/2010 23:55		2	10			700.0	10 BBLS WATER WITH 10 LBS SUAR PUMPED TO CLEAR PARASITE, CAUGHT PRESSURE AT 6 BBLS GONE, PRESSURE SPIKED AT 700 PSI.
Shutdown	12/28/2010 00:01							PARASITE CLEAN.
Safety Huddle	12/28/2010 02:50							RIG UP TO TOPOUT. TOPOUT TRUCK WITH APPROX 425 SKS. 75 SKS LEFT OVER FROM SO # 7814852 WHICH WAS CHARGED ON THAT TICKET, THE OTHER 350 SKS WAS FROM H&P 353 CHARGED ON SO # 7841654.
Pump Water	12/28/2010 03:20		1	2			10.0	PUMP WATER TO ENSURE LINES ARE CLEAR BEFORE MIXING CEMENT.
Pump Cement	12/28/2010 03:25		2	51			65.0	TOPOUT CEMENT, 12.5 PPG, 1.97 CUFT/SK, 10.96 GAL/SK.
Pump Water	12/28/2010 03:51		2	1.5			40.0	PUMP WATER TO CLEAR IRON AND TUBING OF CEMENT.
Shutdown	12/28/2010 03:52							NO RETURNS TO SURFACE, WAIT TO TOPOUT.
Pump Water	12/28/2010 07:34		2	2			45.0	PUMP WATER TO ENSURE LINES ARE CLEAR BEFORE MIXING CEMENT.
Pump Cement	12/28/2010 07:39		2	15			65.0	TOPOUT CEMENT, 12.5 PPG, 1.97 CUFT/SK, 10.96 GAL/SK, CEMENT TO SURFACE AT 15 BBLS GONE
Shutdown	12/28/2010 07:46							SHUTDOWN TO SEE IF CEMENT FALLS, AND IT DID.

Activity Description	Date/Time	Cht #	Rate bbl/ min	Volume bbl		Pressure psig		Comments
				Stage	Total	Tubing	Casing	
Pump Cement	12/28/2010 07:50		2	2	17		50.0	TOPOUT CEMENT, 12.5 PPG, 1.97 CUFT/SK, 10.96 GAL/SK, PUMPED 2 BBLs, CEMENT TO SURFACE.
Shutdown	12/28/2010 07:51							SHUTDOWN TO SEE IF CEMENT FALLS BACK.
Pump Cement	12/28/2010 07:57		2	8	25		50.0	TOPOUT CEMENT, 12.5 PPG, 1.97 CUFT/SK, 10.96 GAL/SK, PUMPED 1 BBL AND CEMENT TO SURFACE, FINISHED PUMPING REST OF TUB, 7 BBLs OF CEMENT TO SURFACE.
Shutdown	12/28/2010 08:00							PUMPED 76 BBLs OF TOPOUT TOTAL, APPROX. 217 SKS USED, APPROX 208 SKS LEFT IN TOPOUT TRUCK, WILL BE LEFT ON WHITE MOUNTAIN LOCATION.
End Job	12/28/2010 08:00							
Post-Job Safety Meeting (Pre Rig-Down)	12/28/2010 08:15							ENTIRE CREW
Rig-Down Equipment	12/28/2010 08:30							
Pre-Convoy Safety Meeting	12/28/2010 09:55							ENTIRE CREW, OBSERVE ALL SAFE DRIVING PROCEDURES
Crew Leave Location	12/28/2010 10:00							THANK YOU FOR USING HALLIBURTON, ERIC STILLSON AND CREW.

OXY

9 5/8 SURFACE



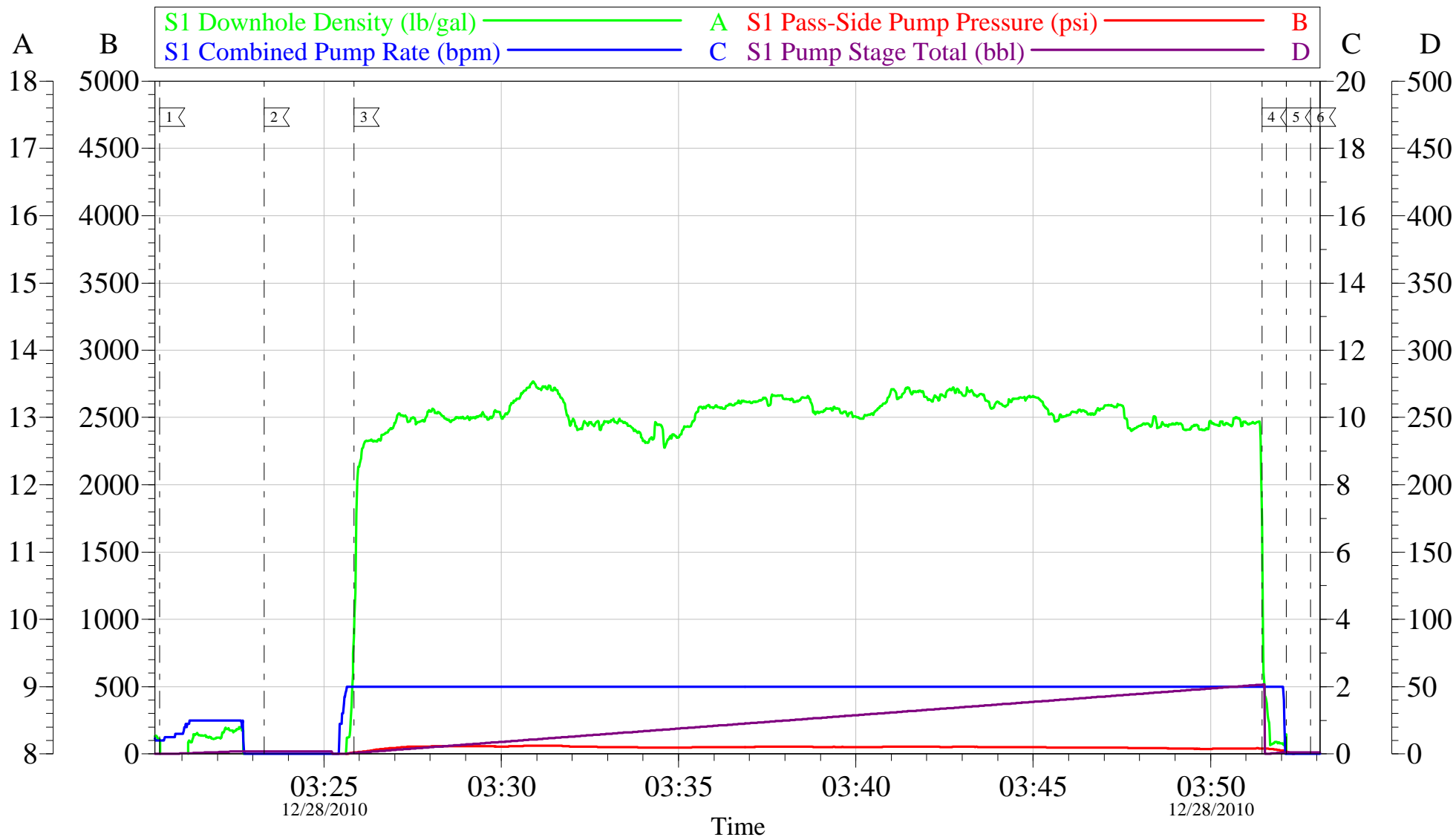
Local Event Log					
1	START JOB	12/27/2010 19:48:11	2	FILL LINES	12/27/2010 19:49:01
3	TEST LINES	12/27/2010 19:51:12	4	PUMP H2O SPACER	12/27/2010 19:54:56
5	PUMP GEL SPACER	12/27/2010 20:01:08	6	PUMP LEAD CEMENT	12/27/2010 20:09:53
7	PUMP TAIL CEMENT	12/27/2010 21:40:12	8	DROP PLUG	12/27/2010 21:54:16
9	SHUTDOWN	12/27/2010 21:51:33	10	PUMP DISPLACEMENT	12/27/2010 21:56:07
11	SLOW RATE	12/27/2010 22:33:18	12	BUMP PLUG	12/27/2010 22:35:53
13	REBUMP PLUG	12/27/2010 22:42:04	14	CHECK FLOATS	12/27/2010 22:47:07
15	CHECK FLOATS	12/27/2010 23:00:50	16	REBUMP PLUG	12/27/2010 22:49:19
17	CLEAR PARASITE	12/27/2010 23:55:08	18	CASING TEST	12/27/2010 23:02:51
19	RELEASE PRESSURE	12/27/2010 23:30:36	20	SHUTDOWN	12/28/2010 00:01:38
21	WAIT TO TOPOUT	12/28/2010 00:02:53	22		
23			23		

Customer: OXY	Job Date: 27-Dec-2010	Sales Order #: 7842716
Well Description: CC 697-08-39	Job Type: SURFACE	ADC Used: YES
Company Rep: VICTOR BENAVIDES	Cement Supervisor: ERIC STILLSON	Elite #: 3 TROY ANGLESTEIN

OptiCem v6.4.2
28-Dec-10 00:29

OXY

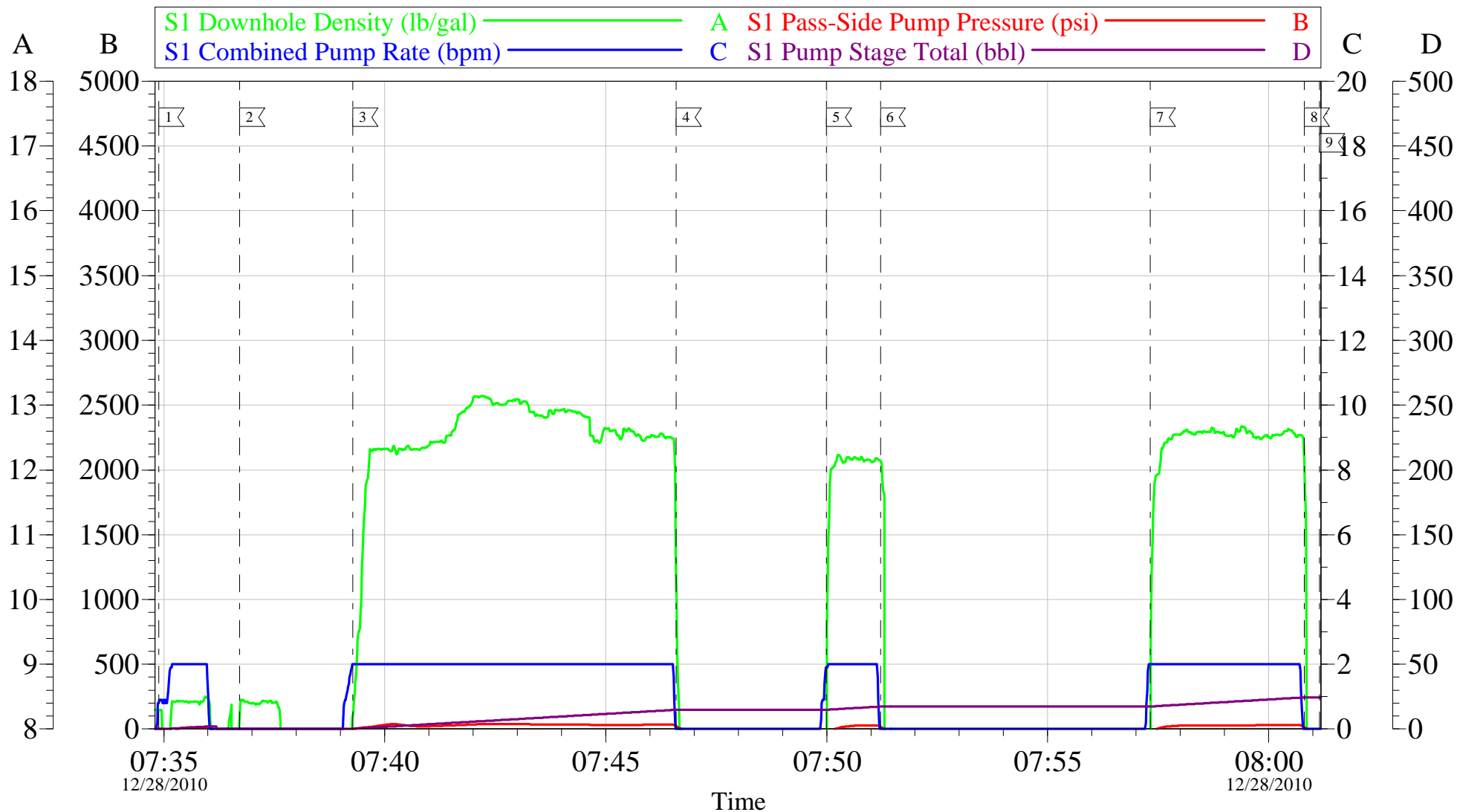
TOPOUT 9 5/8 SURFACE



Customer: OXY	Job Date: 28-Dec-2010	Sales Order #: 7842716
Well Description: CC 697-08-39	Job Type: SURFACE	ADC Used: YES
Company Rep: VICTOR BENAVIDES	Cement Supervisor: ERIC STILLSON	Elite #: 3 TROY ANGLESTEIN

OXY

TOPOUT 9 5/8 SURFACE



Customer: OXY	Job Date: 28-Dec-2010	Sales Order #: 7842716
Well Description: CC 697-08-39	Job Type: SURFACE	ADC Used: YES
Company Rep: VICTOR BENAVIDES	Cement Supervisor: ERIC STILLSON	Elite #: 3 TROY ANGLESTEIN

OptiCem v6.4.2
28-Dec-10 08:18