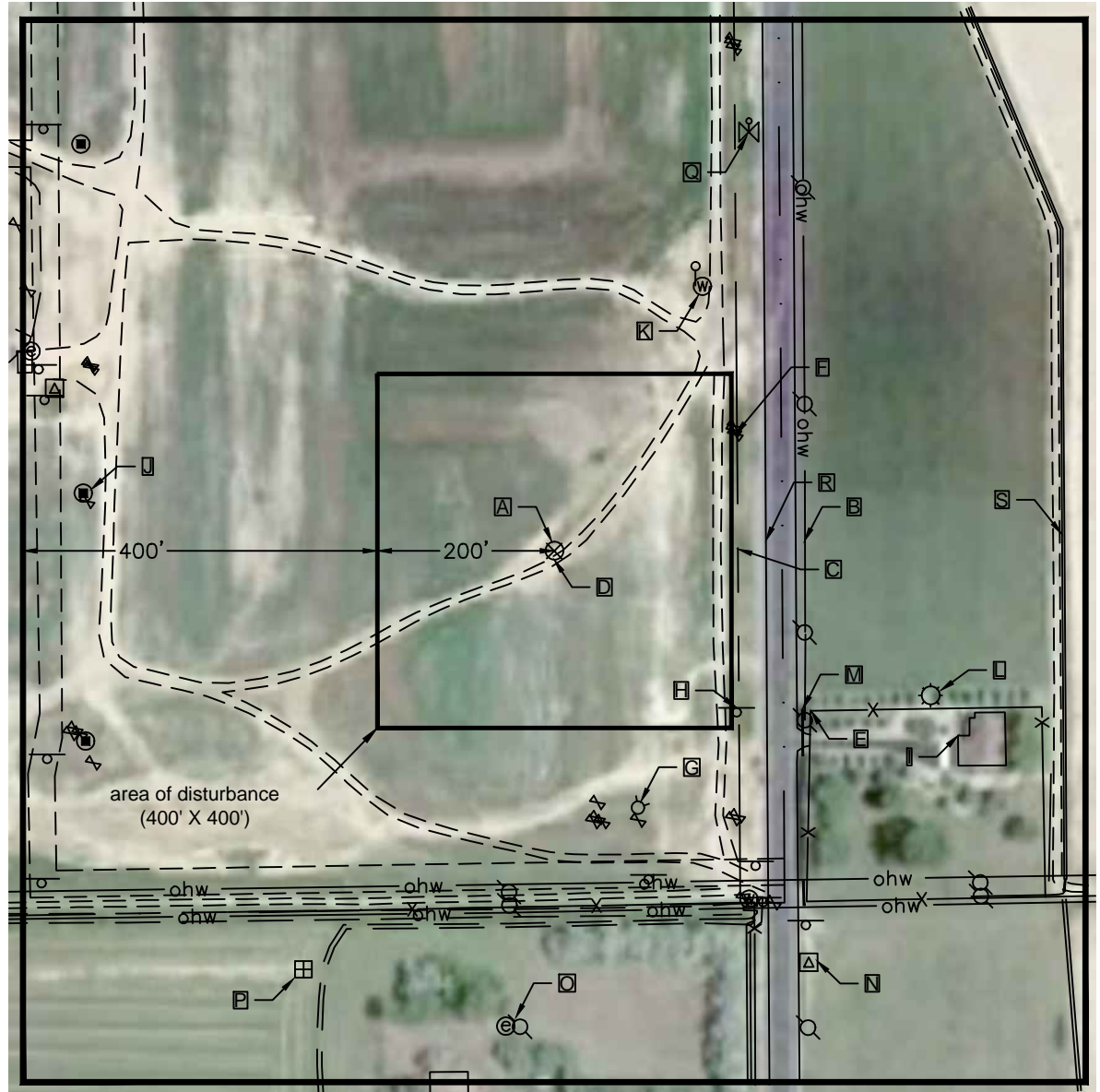


Nearest:
 Building 501' southeast
 Public Road 239' east
 Above Ground Utility 283' east
 Property Line 207' east
 Railroad 3,520' northwest

Location Drawing

Legend:


- misc. sign
- water valve
- water manhole
- sewer manhole
- light pole
- electric trans/vault
- irrigation valve
- power pole
- overhead wires
- electric meter
- water meter



Measurements below
 are from proposed
 Frederiksen 1A-28H

Field observations taken on
 2/28/11 by operator Craig Burke.

- A** proposed Frederiksen 1A-28H well
- B** overhead power lines 283' east
- C** approximate property line 207' east
- D** dirt road 5' southeast
- E** fence line 341' southeast
- F** water valve 243' northeast
- G** fire hydrant 305' southeast
- H** gas line sign 271' southeast
- I** residence 501' southeast
- J** sanitary sewer manhole 536' west
- K** water manhole 342' northeast
- L** light pole 455' southeast
- M** culvert 332' southeast
- N** electric transformer 546' southeast
- O** utility pole w/elec meter 539' south
- P** water meter 551' southwest
- Q** irrigation valve 521' northeast
- R** edge of pavement 239' east
- S** concrete ditch 573' east



**Frederiksen 1A-28H SE-NE
 Pad Location Drawing**

**Improvements extending
 400' from disturbance**

Township 3 North, Range 68 West,
 Section 28: SE $\frac{1}{4}$ NE $\frac{1}{4}$
 Weld County, Colorado

Scale: 1"=200' February 28, 2011

PLS Group, LLC
 109 Coronado Court, Building 7, Fort Collins, Colorado 80525
 Office 970.282.3446 - 970.377.6767 Fax