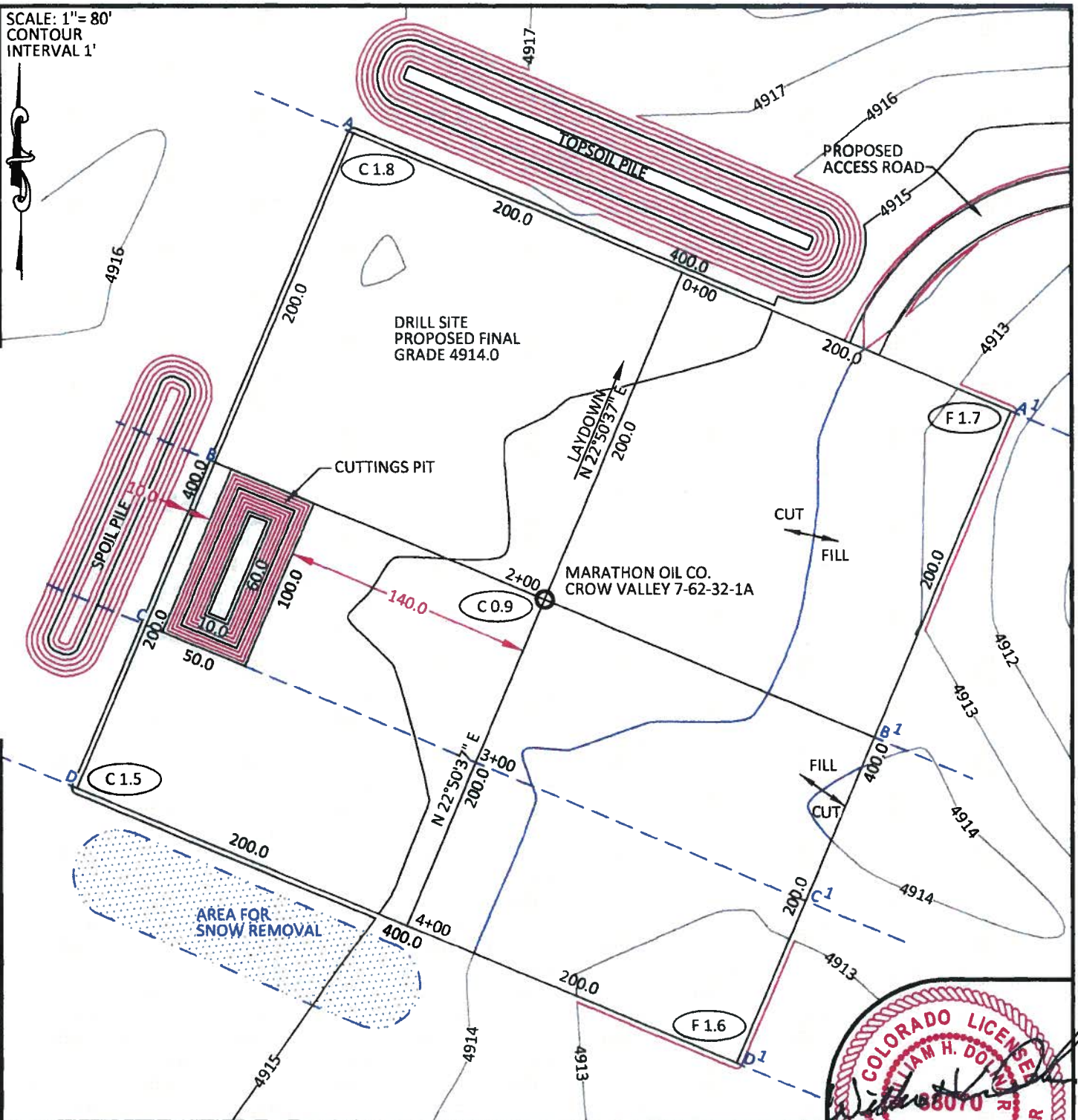


SCALE: 1"= 80'
CONTOUR
INTERVAL 1'



CUTTINGS PIT DATA

SIZE	100' X 50' X 10'
SLOPE	2:1
CAPACITY	25,315 CU. FT. 938 CU. YDS.

CONFIDENTIALITY NOTES:

The information contained in this plat is legally privileged and confidential information intended only for the use of the recipients. If you are not the intended recipients, you are hereby notified that any use, dissemination, distribution or copying of this information is strictly prohibited.



WILLIAM H. SMITH & ASSOCIATES P.C.
SURVEYING CONSULTANTS
150 EAST SECOND NORTH
GREEN RIVER, WY 80430
PHONE: 307-875-3638
307-875-3639
www.whsmithpc.com

CONSTRUCTION DATA

CUT SLOPE:	3:1
FILL SLOPE:	3:1
TOTAL CUT:	6,541 CU. YDS.
TOTAL FILL:	2,096 CU. YDS.
TOP SOIL AT 6"	3,077 CU. YDS.
SPOIL:	1,368 CU. YDS.
DISTURBED AREA	166,135 SQ. FT.
DISTURBED AREA	3.81 ACRES

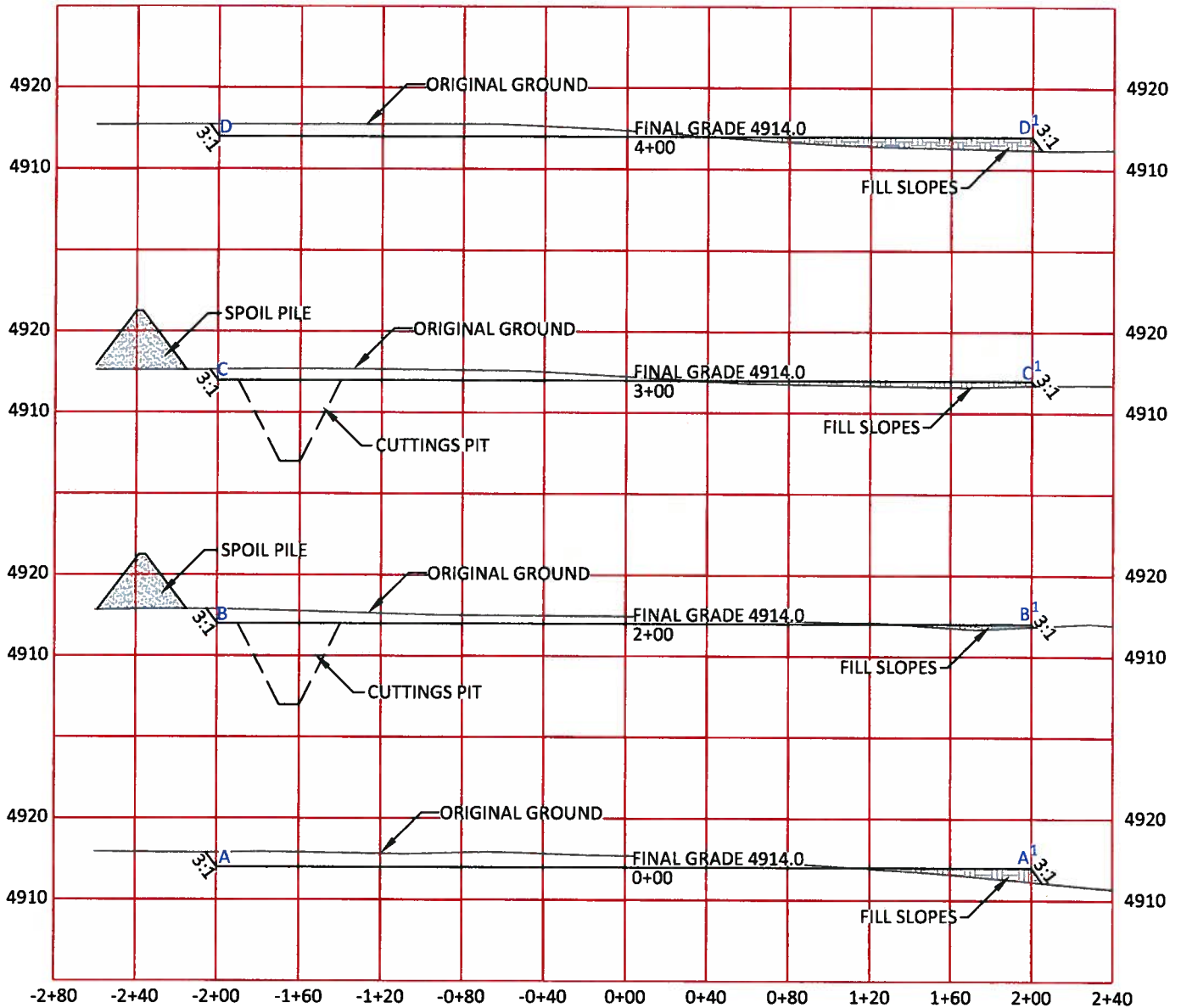
LOCATION:

CROW VALLEY
7-62-32-1A
WITHIN THE SE/4
SE/4 SECTION 32,
T 7 N, R 62 W,
6TH PM.
WELD COUNTY,
COLORADO

MARATHON OIL COMPANY
PO BOX 3128, HOUSTON TX, 77253
5555 SAN FELIPE, HOUSTON TX, 77056

CONSTRUCTION LAYOUT

465' FEL	465' FSL
SCALE: 1"=80'	EXHIBIT "I"
DATE: 02/28/2011	SHEET 8 OF 11



CUTTINGS PIT DATA

SIZE	100' X 50' X 10'
SLOPE	2:1
CAPACITY	25,315 CU. FT. 938 CU. YDS.

HORIZONTAL SCALE: 1"=80'
VERTICAL SCALE: 1"=20'

CONFIDENTIALITY NOTES:

The information contained in this plat is legally privileged and confidential information intended only for the use of the recipients. If you are not the intended recipients, you are hereby notified that any use, dissemination, distribution or copying of this information is strictly prohibited.



**WILLIAM H. SMITH
& ASSOCIATES P.C.**

SURVEYING CONSULTANTS
50 EAST SECOND NORTH PHONE: 307-875-3638
GREEN RIVER, WY 307-875-3639
www.whsmithpc.com

DRAWN BY: CED	CHECKED BY: WHD
PROJECT NO: 762321A	JOB NO: 2011001
REVISIONS:	

CONSTRUCTION DATA

CUT SLOPE:	3:1
FILL SLOPE:	3:1
TOTAL CUT:	6,541 CU. YDS.
TOTAL FILL:	2,096 CU. YDS.
TOP SOIL AT 8"	3,077 CU. YDS.
SPOIL	1,368 CU. YDS.
DISTURBED AREA	166,135 SQ. FT.
DISTURBED AREA	3.81 ACRES

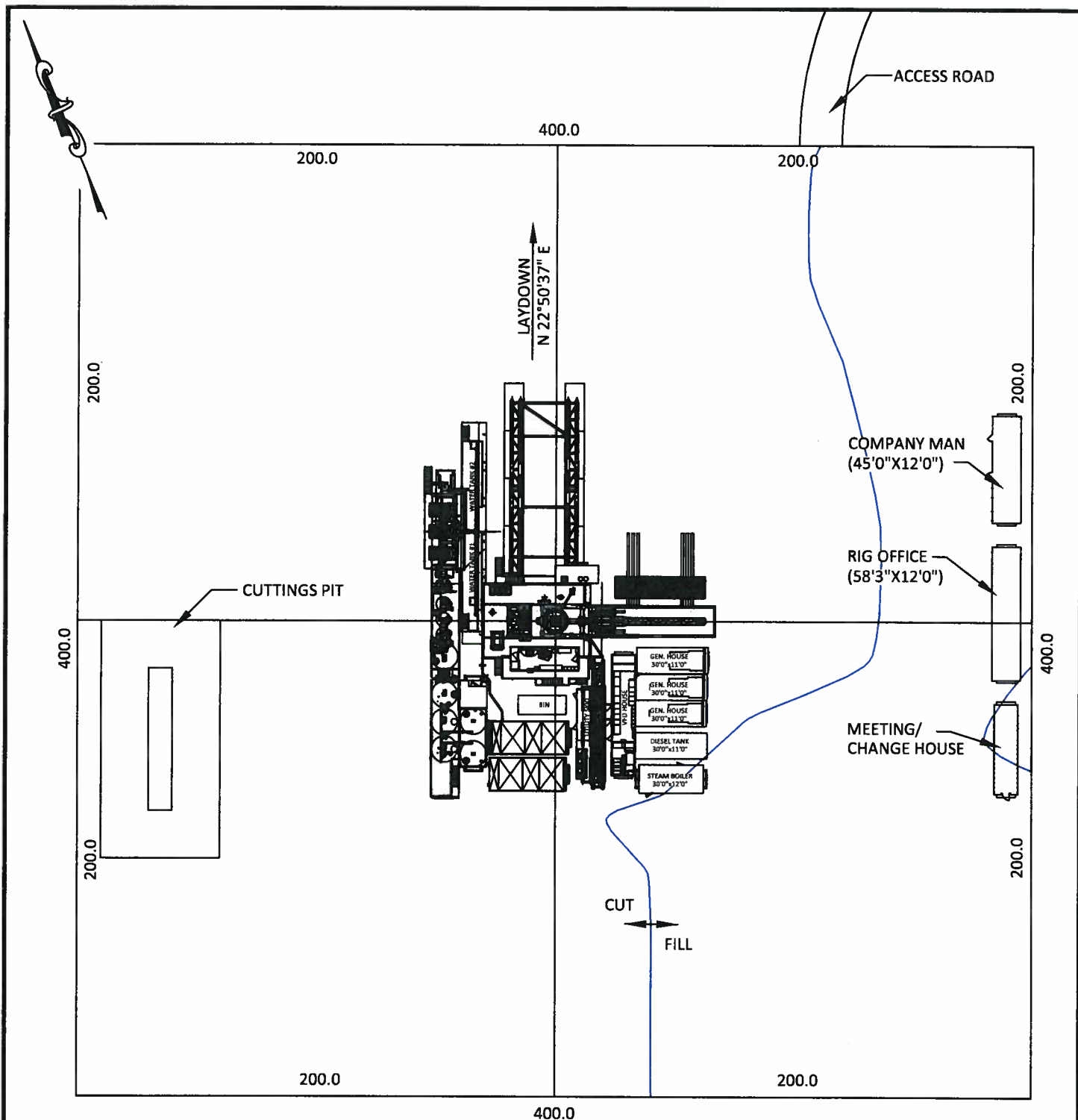
LOCATION:

CROW VALLEY
7-62-32-1A
WITHIN THE SE/4
SE/4 SECTION 32,
T 7 N, R 62 W,
6TH PM.
WELD COUNTY,
COLORADO

MARATHON OIL COMPANY
PO BOX 3128, HOUSTON TX, 77253
5555 SAN FELIPE, HOUSTON TX, 77056


CONSTRUCTION LAYOUT CROSS SECTIONS

SCALE: NOTED	EXHIBIT "J"
DATE: 02/28/2011	SHEET 9 OF 11



CONFIDENTIALITY NOTES:

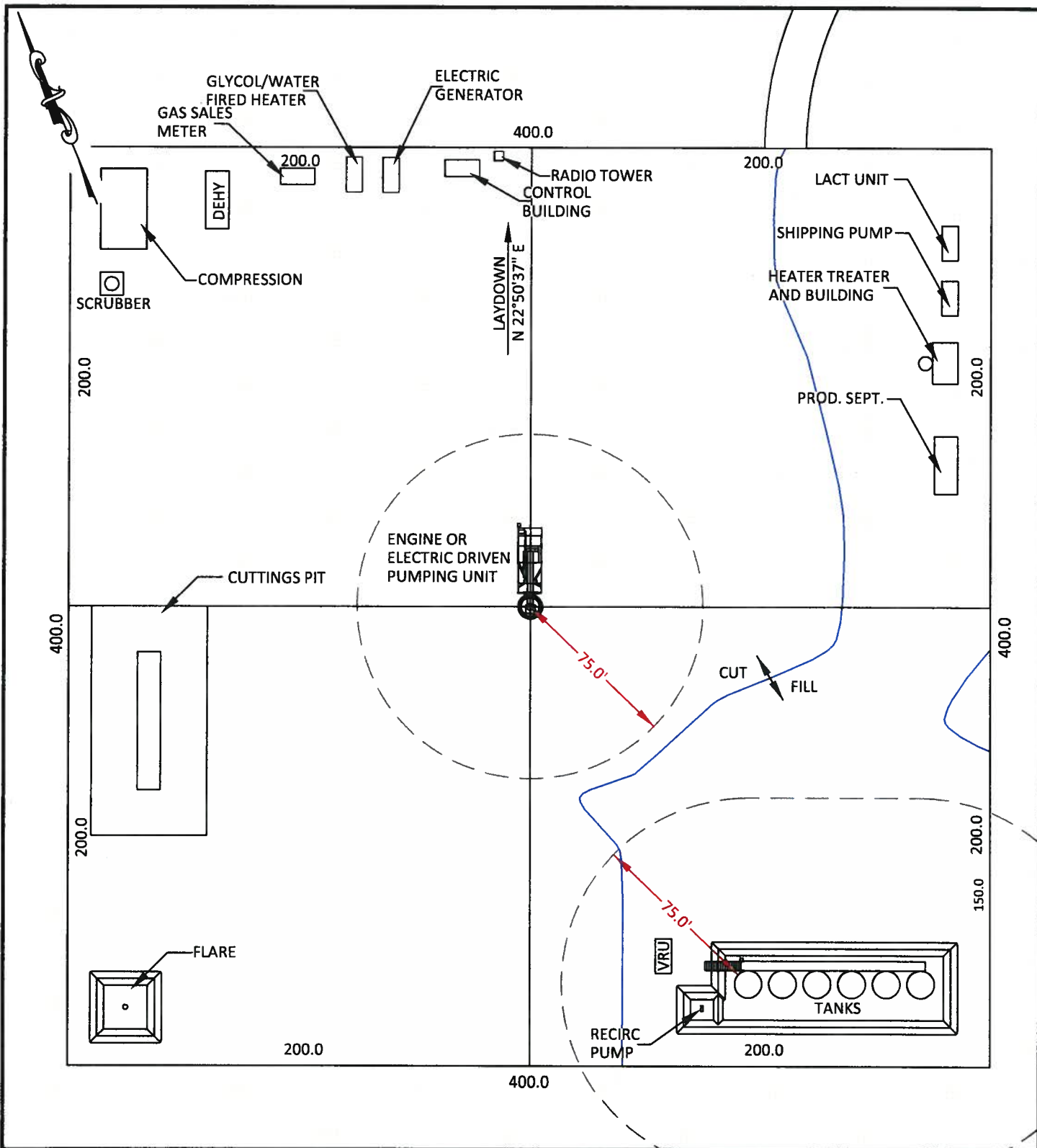
The information contained in this plat is legally privileged and confidential information intended only for the use of the recipients. If you are not the intended recipients, you are hereby notified that any use, dissemination, distribution or copying of this information is strictly prohibited.

	WILLIAM H. SMITH & ASSOCIATES P.C.		
	SURVEYING CONSULTANTS		
	50 EAST SECOND NORTH PHONE: 307-875-3638 GREEN RIVER, WY 307-875-3639		
	www.whsmithpc.com		
DRAWN BY: CED		CHECKED BY: WHD	
PROJECT NO: 762321A		JOB NO: 2011001	
REVISIONS:			

CUTTINGS PIT DATA	
SIZE	100' X 50' X 10'
SLOPE	2:1
CAPACITY	25,315 CU. FT. 938 CU. YDS.


LOCATION:	
CROW VALLEY 7-62-32-1A WITHIN THE SE/4 SE/4 SECTION 32, T 7 N, R 62 W, 6TH PM. WELD COUNTY, COLORADO	

MARATHON OIL COMPANY PO BOX 3128, HOUSTON TX, 77253 5555 SAN FELIPE, HOUSTON TX, 77056	
DRILLING FACILITIES	
SCALE: 1"=60'	EXHIBIT "K"
DATE: 02/28/2011	SHEET 10 OF 11



CONFIDENTIALITY NOTES:

The information contained in this plat is legally privileged and confidential information intended only for the use of the recipients. If you are not the intended recipients, you are hereby notified that any use, dissemination, distribution or copying of this information is strictly prohibited.

 <div>WILLIAM H. SMITH & ASSOCIATES P.C. SURVEYING CONSULTANTS 50 EAST SECOND NORTH PHONE: 307-875-3638 GREEN RIVER, WY 307-875-3639 www.whsmithpc.com</div>	CUTTINGS PIT DATA		LOCATION: CROW VALLEY 7-62-32-1A WITHIN THE SE/4 SE/4 SECTION 32, T 7 N, R 62 W, 6TH PM. WELD COUNTY, COLORADO	MARATHON OIL COMPANY PO BOX 3128, HOUSTON TX, 77253 5555 SAN FELIPE, HOUSTON TX, 77056
	SIZE	100' X 50' X 10'		
	SLOPE	2:1		
	CAPACITY	25,315 CU. FT. 938 CU. YDS.		
DRAWN BY: CED	CHECKED BY: WHD			
PROJECT NO: 762321A	JOB NO: 2011001			
REVISIONS:				