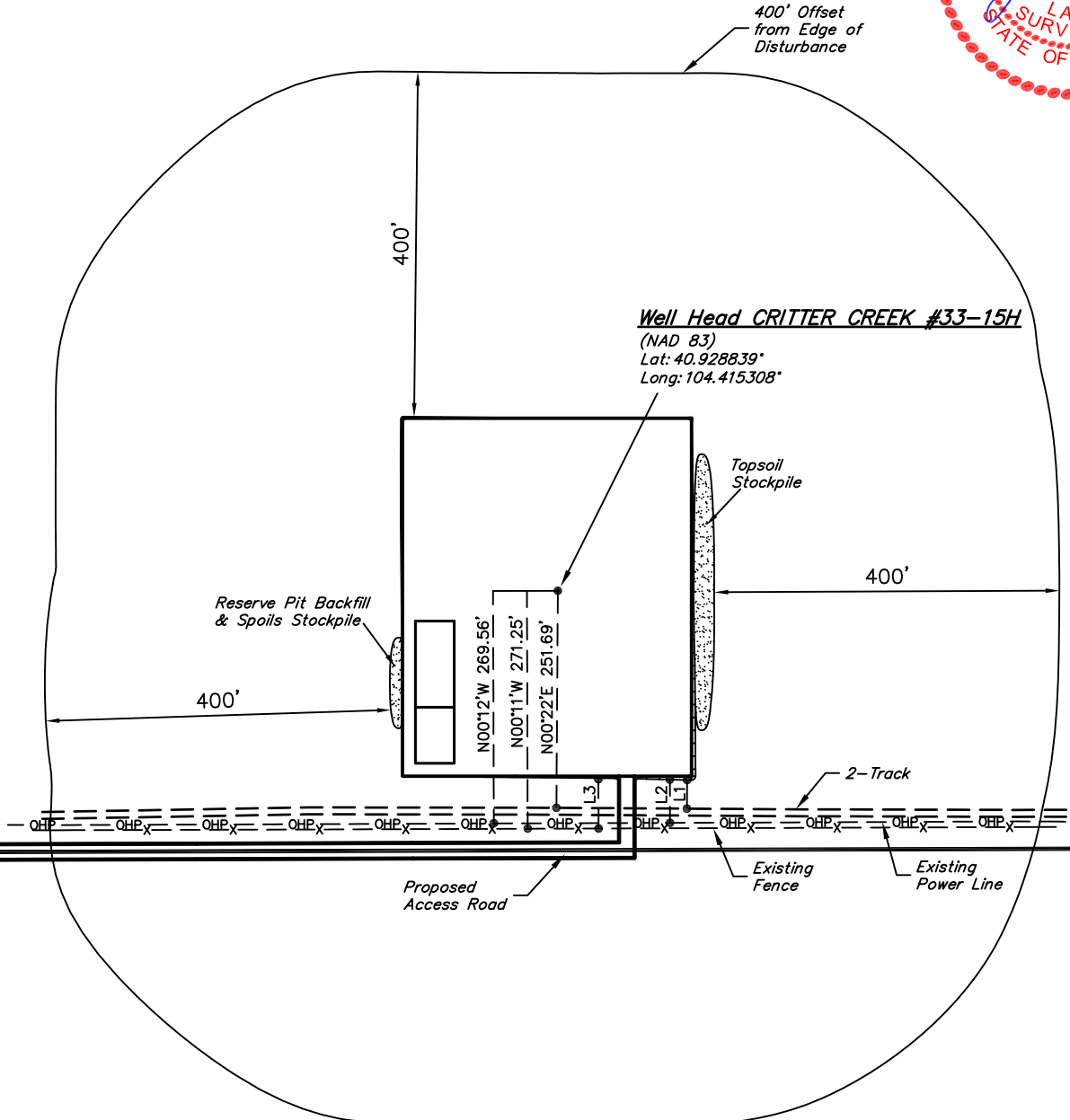


EOG RESOURCES, INC.
ADDENDUM TO LEGAL PLAT FOR
CRITTER CREEK #33-15H
SECTION 15, T11N, R63W, 6th P.M.
301' FNL 1600' FEL

SCALE: 1" = 200'
 DATE: 01-26-11
 DRAWN BY: K.O.



LINE TABLE			
LINE	DESCRIPTION	BEARING	LENGTH
L1	To 2-Track	N00°22'E	33.17'
L2	To Power Line	N00°12'W	50.14'
L3	To Fence	N00°11'W	57.02'

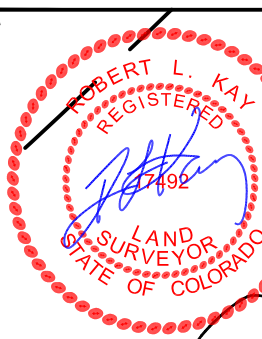
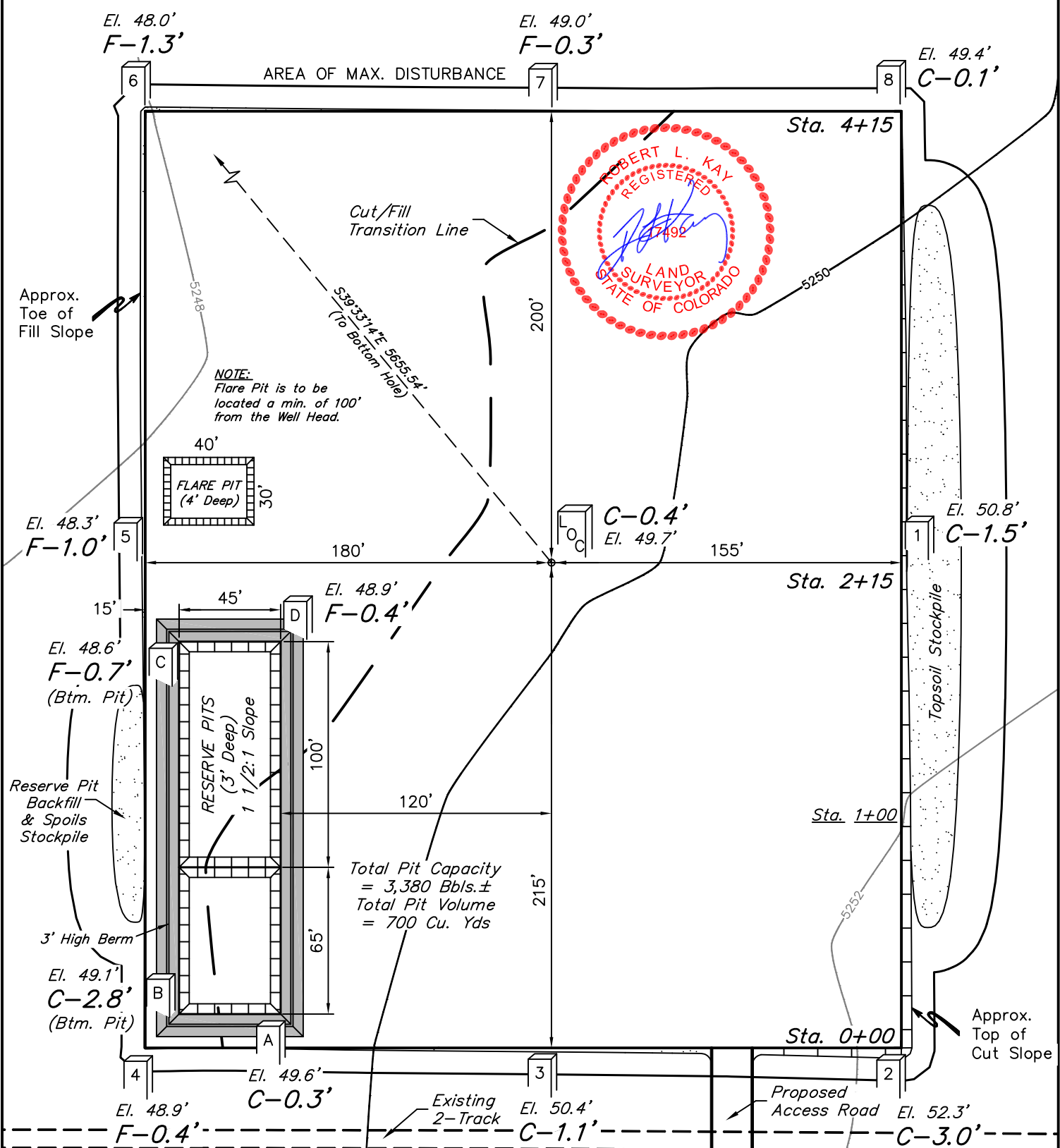
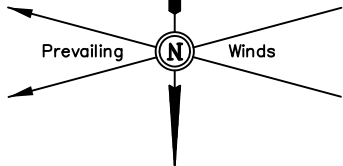
EOG RESOURCES, INC.

CONSTRUCTION LAYOUT FOR

CRITTER CREEK #33-15H
SECTION 15, T11N, R63W, 6th P.M.
301' FNL 1600' FEL

FIGURE #1

SCALE: 1" = 60'
DATE: 01-26-11
DRAWN BY: K.O.



NOTE:
Flare Pit is to be located a min. of 100' from the Well Head.

Total Pit Capacity = 3,380 Bbbls.±
Total Pit Volume = 700 Cu. Yds

Elev. Ungraded Ground At Loc. Stake = 5249.7'
FINISHED GRADE ELEV. AT LOC. STAKE = 5249.3'

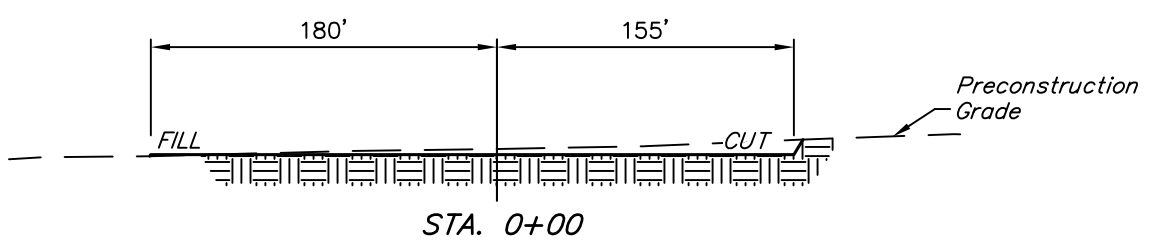
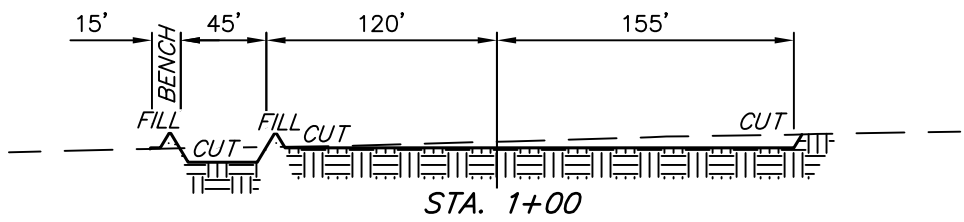
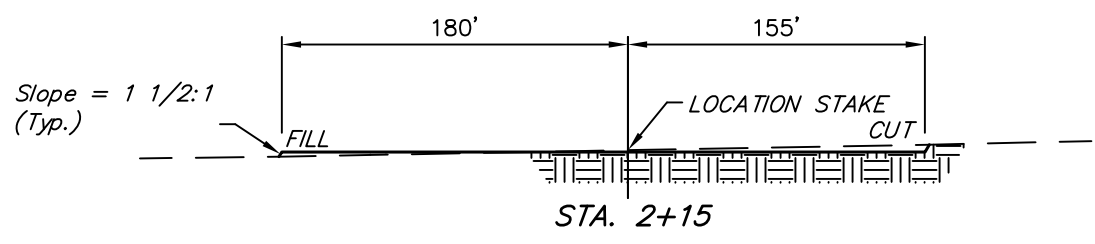
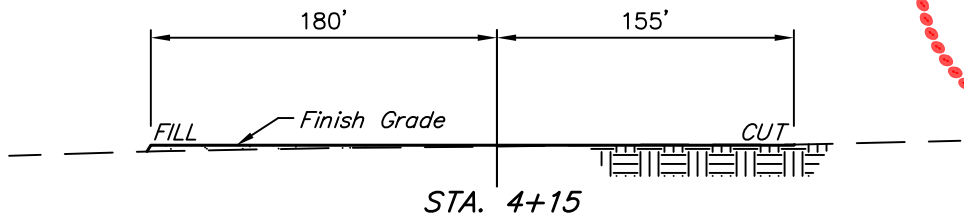
UINTAH ENGINEERING & LAND SURVEYING
85 So. 200 East * Vernal, Utah 84078 * (435) 789-1017

EOG RESOURCES, INC.

FIGURE #2

CONSTRUCTION LAYOUT CROSS SECTIONS FOR
 CRITTER CREEK #33-15H
 SECTION 15, T11N, R63W, 6th P.M.
 301' FNL 1600' FEL

1" = 40'
 X-Section Scale
 1" = 100'
 DATE: 01-26-11
 DRAWN BY: K.O.



NOTE:
 Topsoil should not be Stripped Below Finished Grade on Substructure Area.

APPROXIMATE ACREAGES
 WELL SITE DISTURBANCE = ± 3.922 ACRES
 ACCESS ROAD DISTURBANCE = ± 0.793 ACRES
 TOTAL = ± 4.715 ACRES

* NOTE:
 FILL QUANTITY INCLUDES 5% FOR COMPACTION

APPROXIMATE YARDAGES

(6") Topsoil Stripping	=	2,660 Cu. Yds.
Remaining Location	=	2,660 Cu. Yds.
TOTAL CUT	=	5,320 CU.YDS.
FILL	=	2,310 CU.YDS.

EXCESS MATERIAL	=	3,010 Cu. Yds.
Topsoil & Pit Backfill (1/2 Pit Vol.)	=	3,010 Cu. Yds.
EXCESS UNBALANCE (After Interim Rehabilitation)	=	0 Cu. Yds.

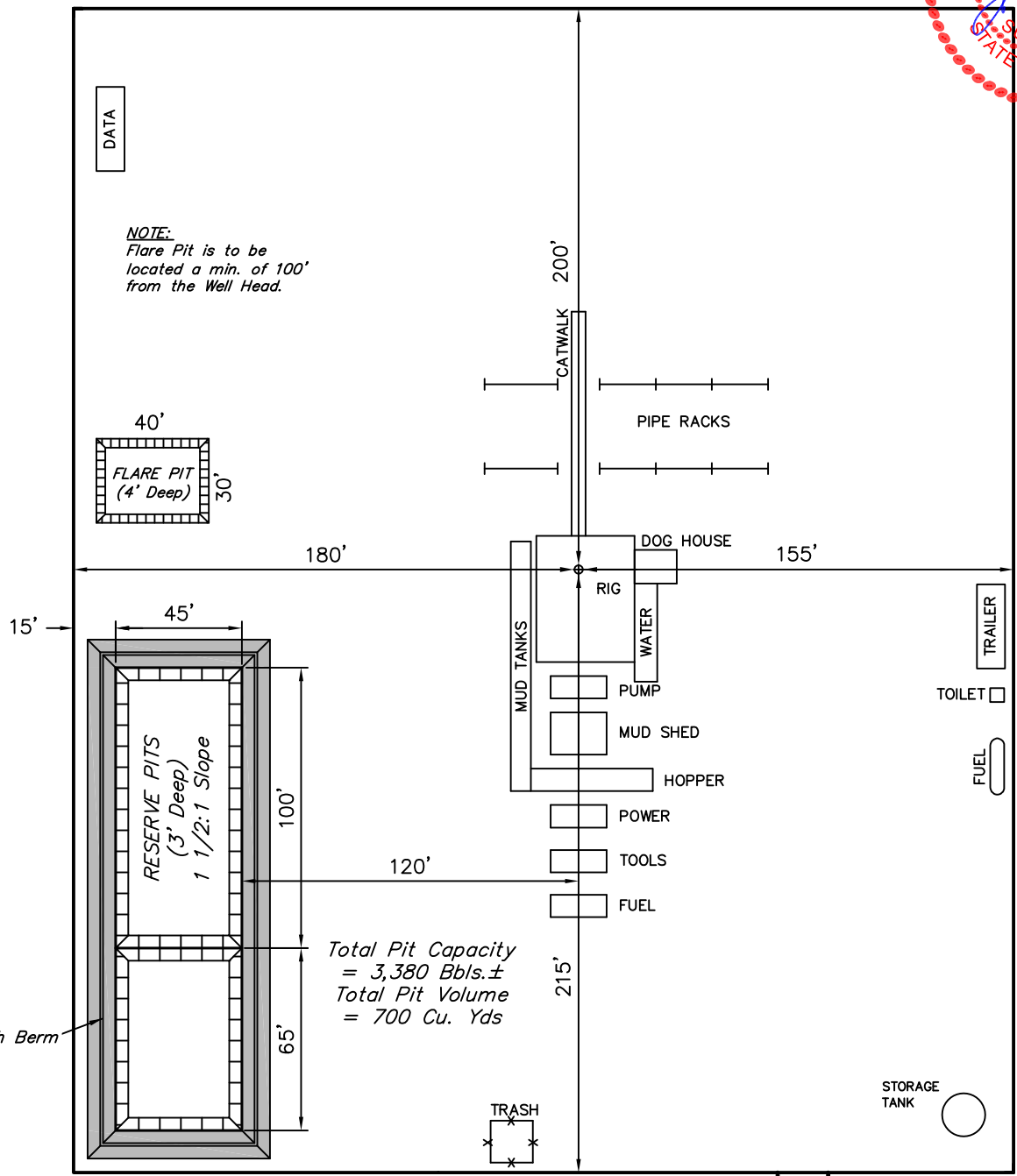
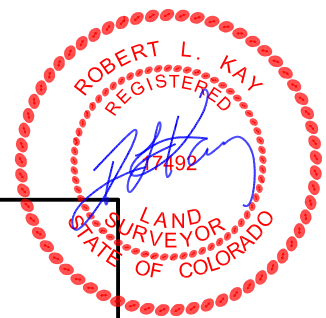
UINTAH ENGINEERING & LAND SURVEYING
 85 So. 200 East * Vernal, Utah 84078 * (435) 789-1017

EOG RESOURCES, INC.

TYPICAL RIG LAYOUT FOR
 CRITTER CREEK #33-15H
 SECTION 15, T11N, R63W, 6th P.M.
 301' FNL 1600' FEL

FIGURE #3

SCALE: 1" = 60'
 DATE: 01-26-11
 DRAWN BY: K.O.



DATA

NOTE:
 Flare Pit is to be located a min. of 100' from the Well Head.

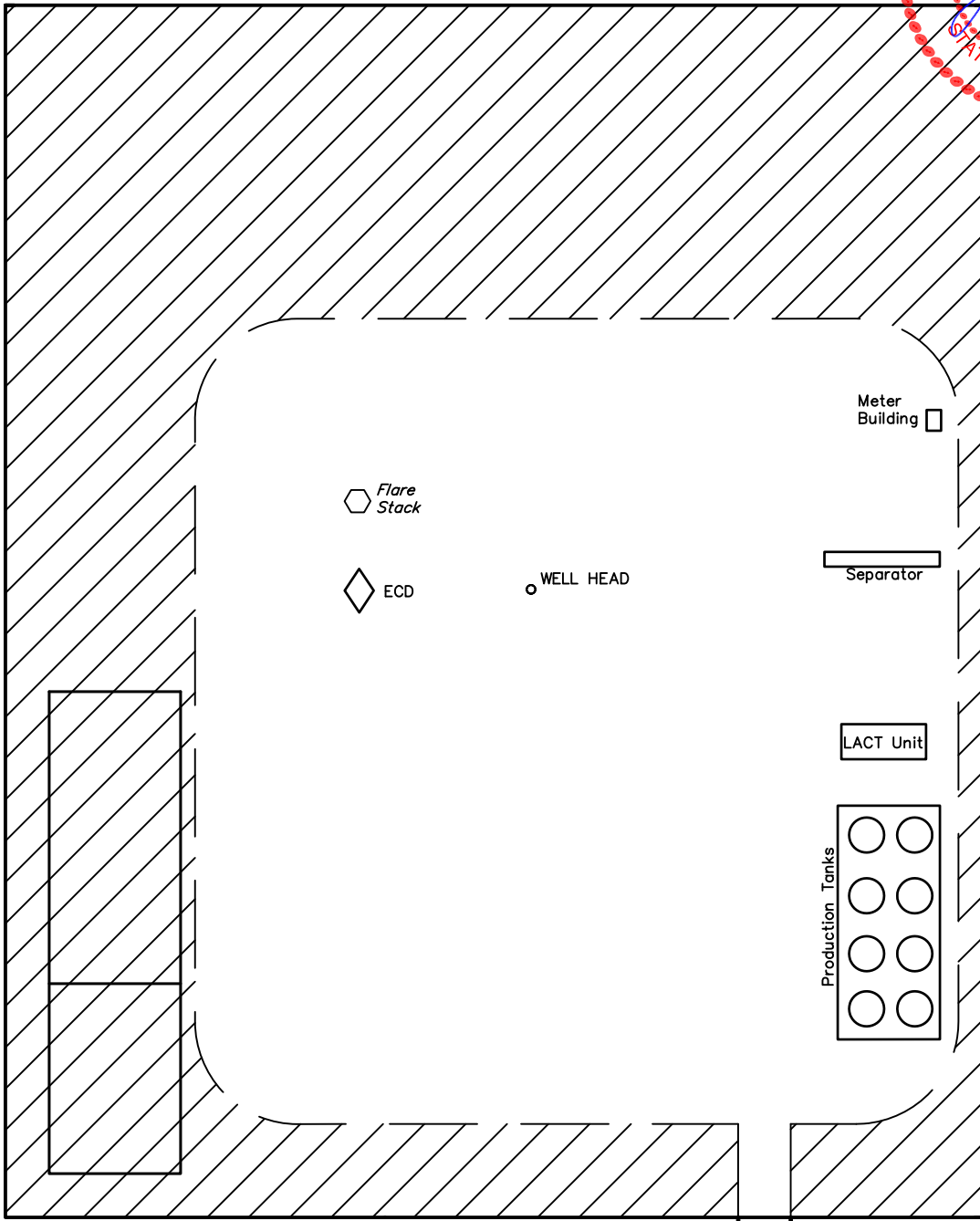
Total Pit Capacity = 3,380 Bbls.±
 Total Pit Volume = 700 Cu. Yds

3' High Berm

Proposed Access Road

EOG RESOURCES, INC.
RECLAMATION DIAGRAM FOR
CRITTER CREEK #33-15H
SECTION 15, T11N, R63W, 6th P.M.
301' FNL 1600' FEL

FIGURE #4
SCALE: 1" = 60'
DATE: 01-26-11
DRAWN BY: K.O.



APPROXIMATE ACREAGES
UN-RECLAIMED = ± 1.548 ACRES

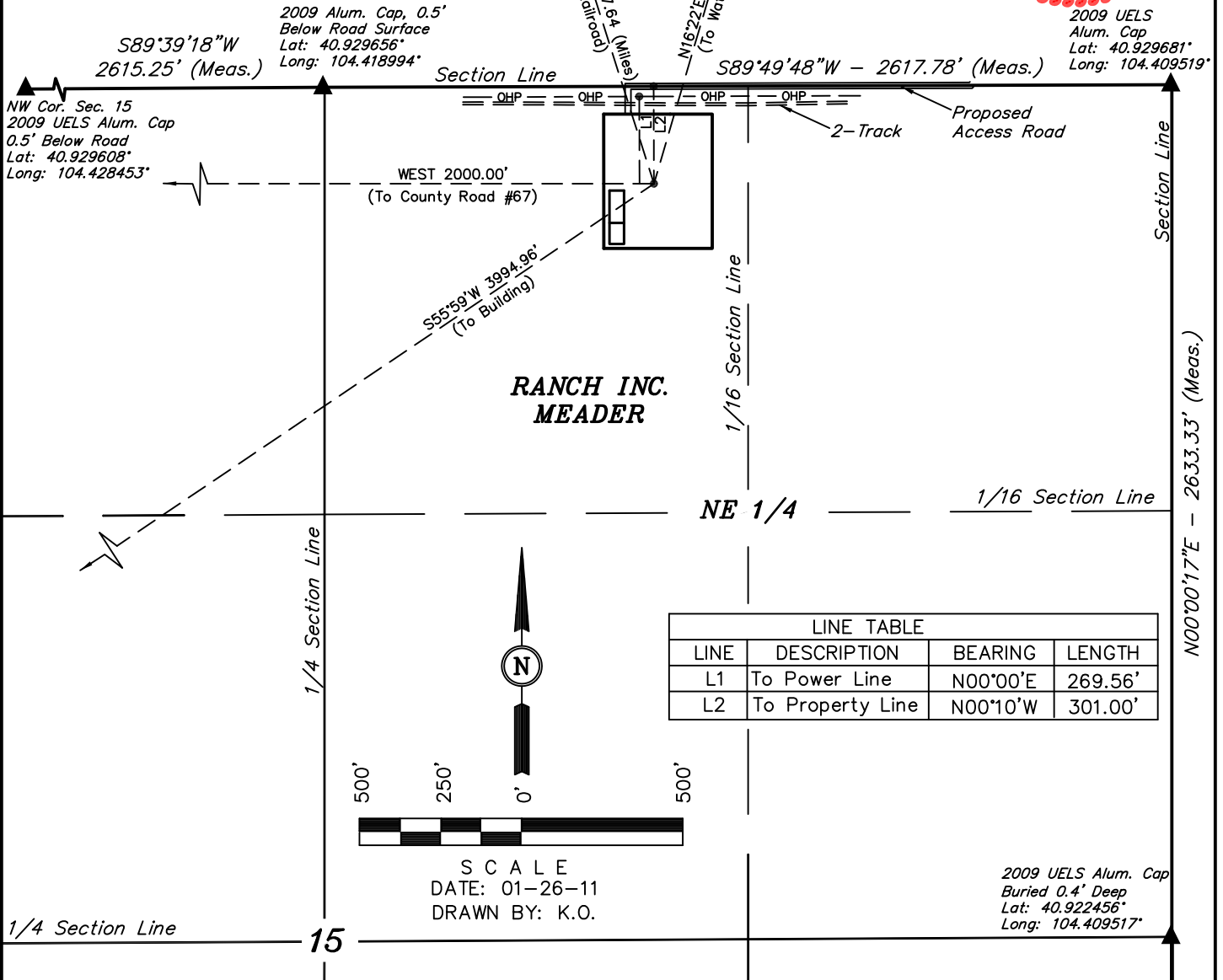
 RECLAIMED AREA

UINTAH ENGINEERING & LAND SURVEYING
85 So. 200 East * Vernal, Utah 84078 * (435) 789-1017

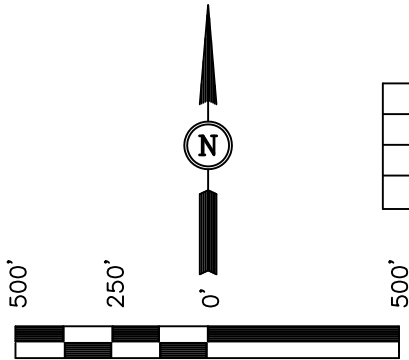
EOG RESOURCES, INC.

LOCATION DRAWING FOR
CRITTER CREEK #33-15H
 SECTION 15, T11N, R63W, 6th P.M.
 301' FNL 1600' FEL

FIGURE #5



LINE TABLE			
LINE	DESCRIPTION	BEARING	LENGTH
L1	To Power Line	N00°00'E	269.56'
L2	To Property Line	N00°10'W	301.00'



- PLANT COMMUNITY**
- DISTURBED GRASSLAND
 - NATIVE GRASSLAND
 - SHRUB LAND
 - PLAINS RIPARIAN
 - MOUNTAIN RIPARIAN
 - FOREST LAND
 - WETLANDS AQUATIC
 - ALPINE
 - OTHER (Describe): _____

- CURRENT LAND USE**
- CROP LAND: IRRIGATED DRY LAND IMPROVED PASTURE HAY MEADOW CRP
- NON-CROP LAND: RANGELAND TIMBER RECREATIONAL OTHER (Describe) _____
- SUBDIVIDED: INDUSTRIAL COMMERCIAL RESIDENTIAL _____

- FUTURE LAND USE**
- CROP LAND: IRRIGATED DRY LAND IMPROVED PASTURE HAY MEADOW CRP
- NON-CROP LAND: RANGELAND TIMBER RECREATIONAL OTHER (Describe) _____
- SUBDIVIDED: INDUSTRIAL COMMERCIAL RESIDENTIAL _____