

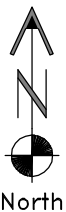
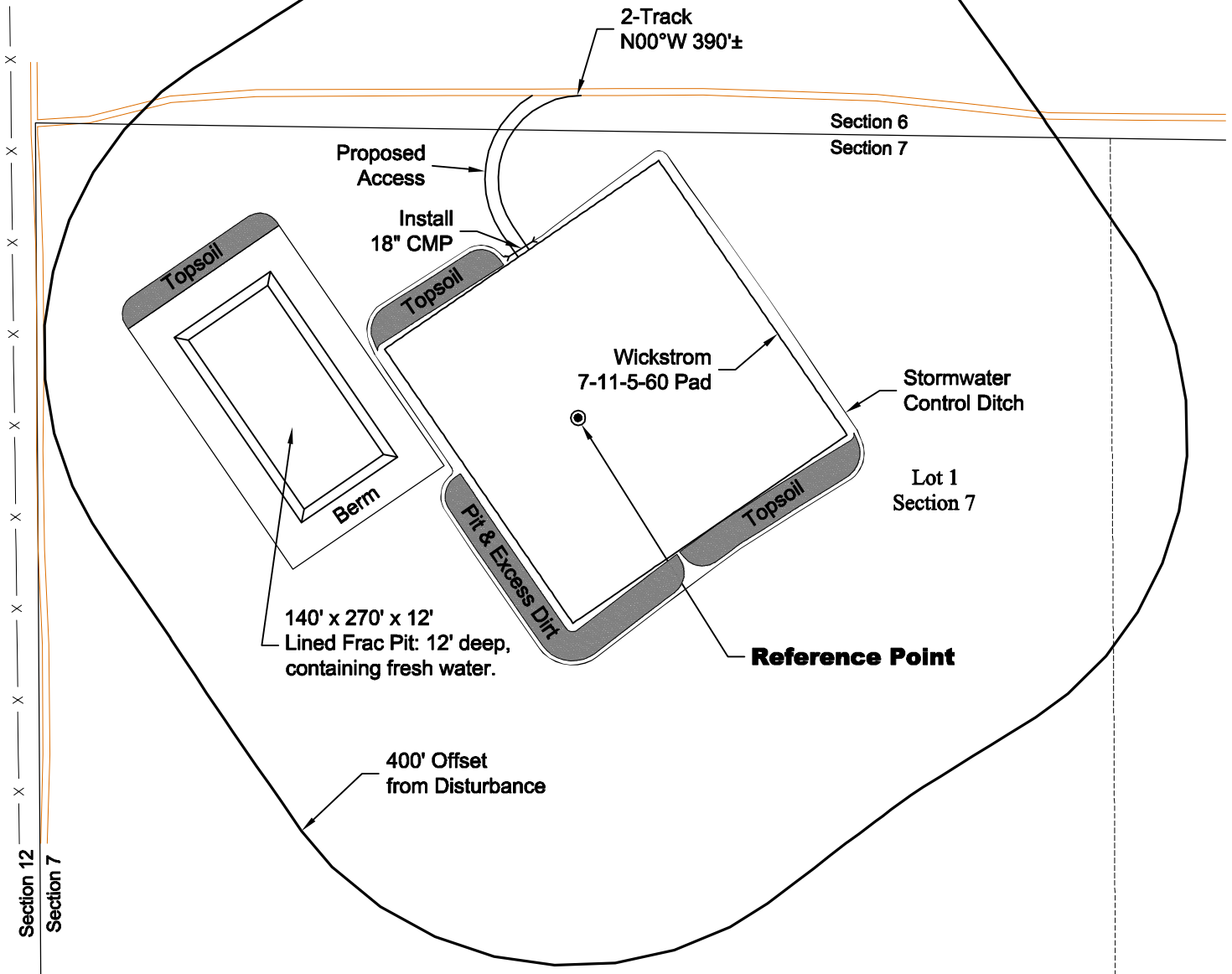
# LOCATION DRAWING

**VEGETATION:**  
CRP

**SURFACE USE:**  
NON CROP LAND

## REFERENCE POINT

LATITUDE: 40.42245
LONGITUDE: -104.14427
FOOTAGE: 345 FNL 650 FWL
GROUND ELEVATION: 4590.7
PDOP: 2.3 DATE: 2/15/2011
INSTRUMENT OPERATOR: GEORGE ALLEN



0 200 400  
Graphic Scale in Feet  
1 inch = 200 feet

**DISTURBANCE ACREAGE:**  
5.0± DRILLING OPERATIONS  
2.0± FRAC PIT  
1.0± INTERIM RECLAIM

## NOTE:

ALL PRODUCTION FACILITIES WILL BE ON PAD.

3/15/11

**GEO SURV**  
LAND SURVEYING AND MAPPING  
LAFAYETTE - WINTER PARK  
Ph 303 666 0379 Fx 303 665 6320

**CARRIZO OIL & GAS, INC**  
WICKSTROM 7-11-5-60 PAD

**LOT 1 SEC. 7 T5N R60W**  
**6th PM MORGAN COUNTY COLORADO**