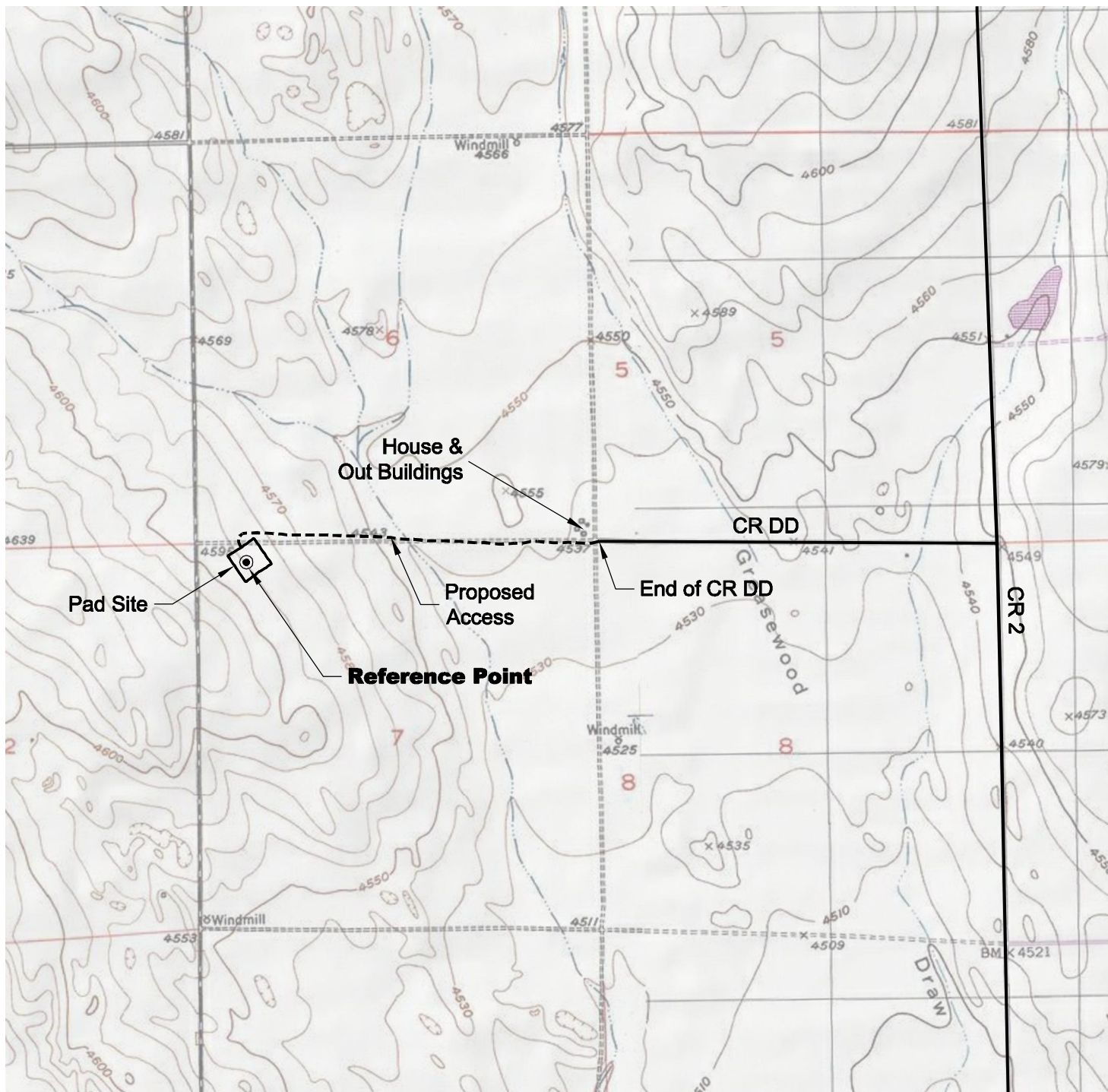


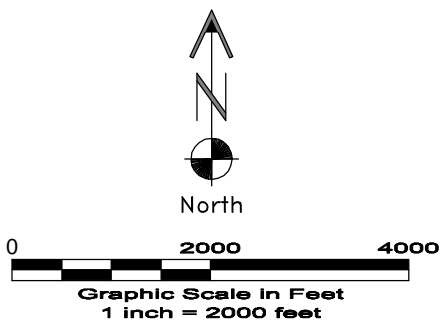
ACCESS ROAD MAP



DRIVING DIRECTIONS:

From Town of Orchard, beginning at intersection of
Washington Ave & CR X; East on CR X
MP 0.2 Left on CR 2
MP 6.3 Left on CR DD
MP 7.3 End of CR DD, continue west on new access
MP 8.2 Wickstrom 7-11-5-60 pad

3/15/11



GEO SURV

LAND SURVEYING AND MAPPING
LAFAYETTE - WINTER PARK
Ph 303 666 0379 Fx 303 665 6320

CARRIZO OIL & GAS, INC
WICKSTROM 7-11-5-60 PAD

LOT 1 SEC. 7 T5N R60W
6th PM MORGAN COUNTY COLORADO