

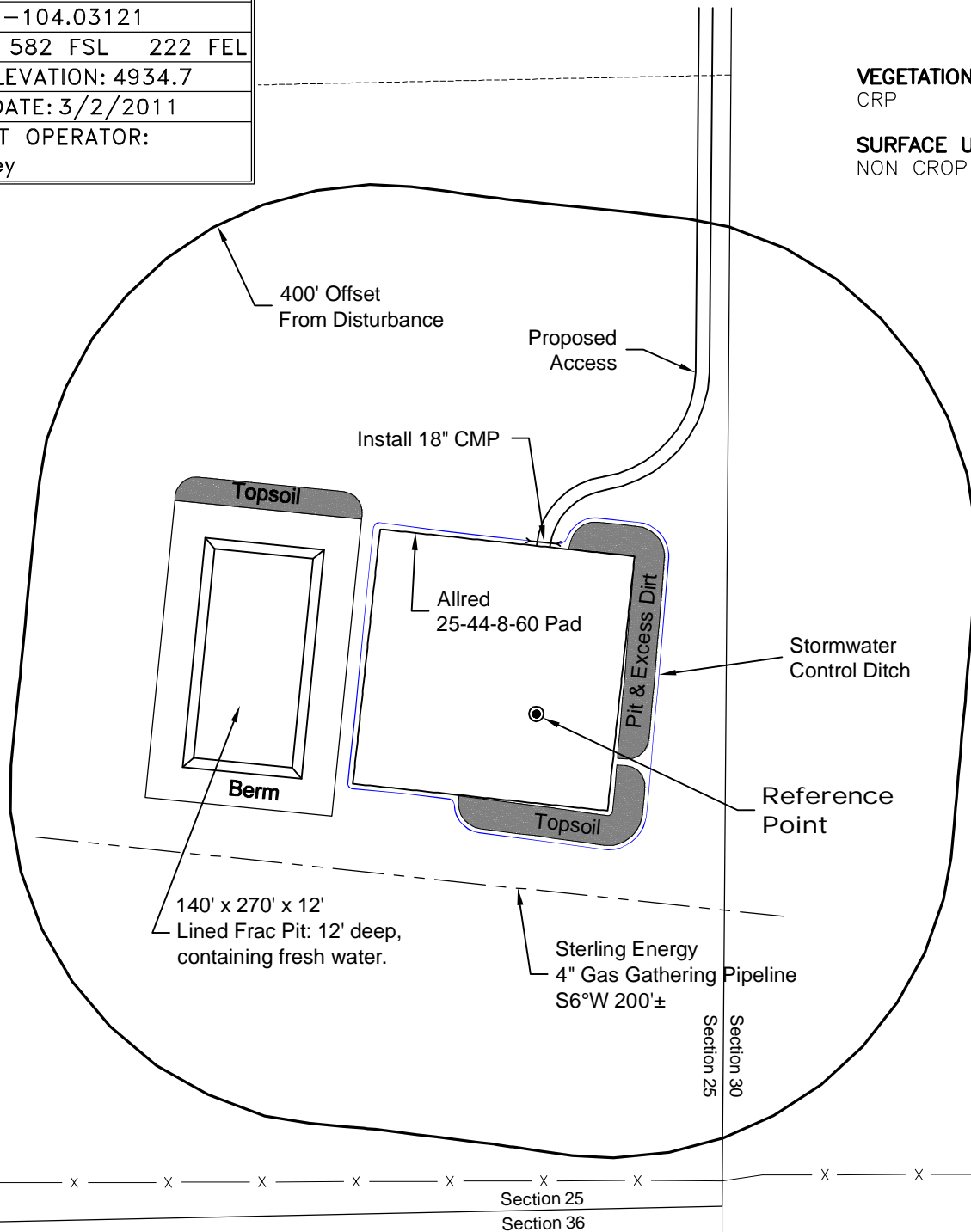
# LOCATION DRAWING

## REFERENCE POINT

LATITUDE: 40.62781  
 LONGITUDE: -104.03121  
 FOOTAGE: 582 FSL 222 FEL  
 GROUND ELEVATION: 4934.7  
 PDOP: 2.7 DATE: 3/2/2011  
 INSTRUMENT OPERATOR:  
 Dave Murrey

VEGETATION:  
 CRP

SURFACE USE:  
 NON CROP LAND



**NOTE:**  
 ALL PRODUCTION FACILITIES  
 WILL BE ON PAD.

3/14/11



North

0 200 400  
 Graphic Scale in Feet  
 1 inch = 200 feet

DISTURBANCE ACREAGE:  
 3.0± DRILLING OPERATIONS  
 2.1± FRAC PIT  
 1.0± INTERIM RECLAIM



LAND SURVEYING AND MAPPING  
 LAFAYETTE - WINTER PARK  
 Ph 303 666 0379 Fx 303 665 6320

**CARRIZO OIL & GAS, INC**  
**ALLRED 25-44-8-60 PAD**

**SE1/4 SE1/4 SEC. 25 T8N R60W**  
**6th PM WELD COUNTY COLORADO**