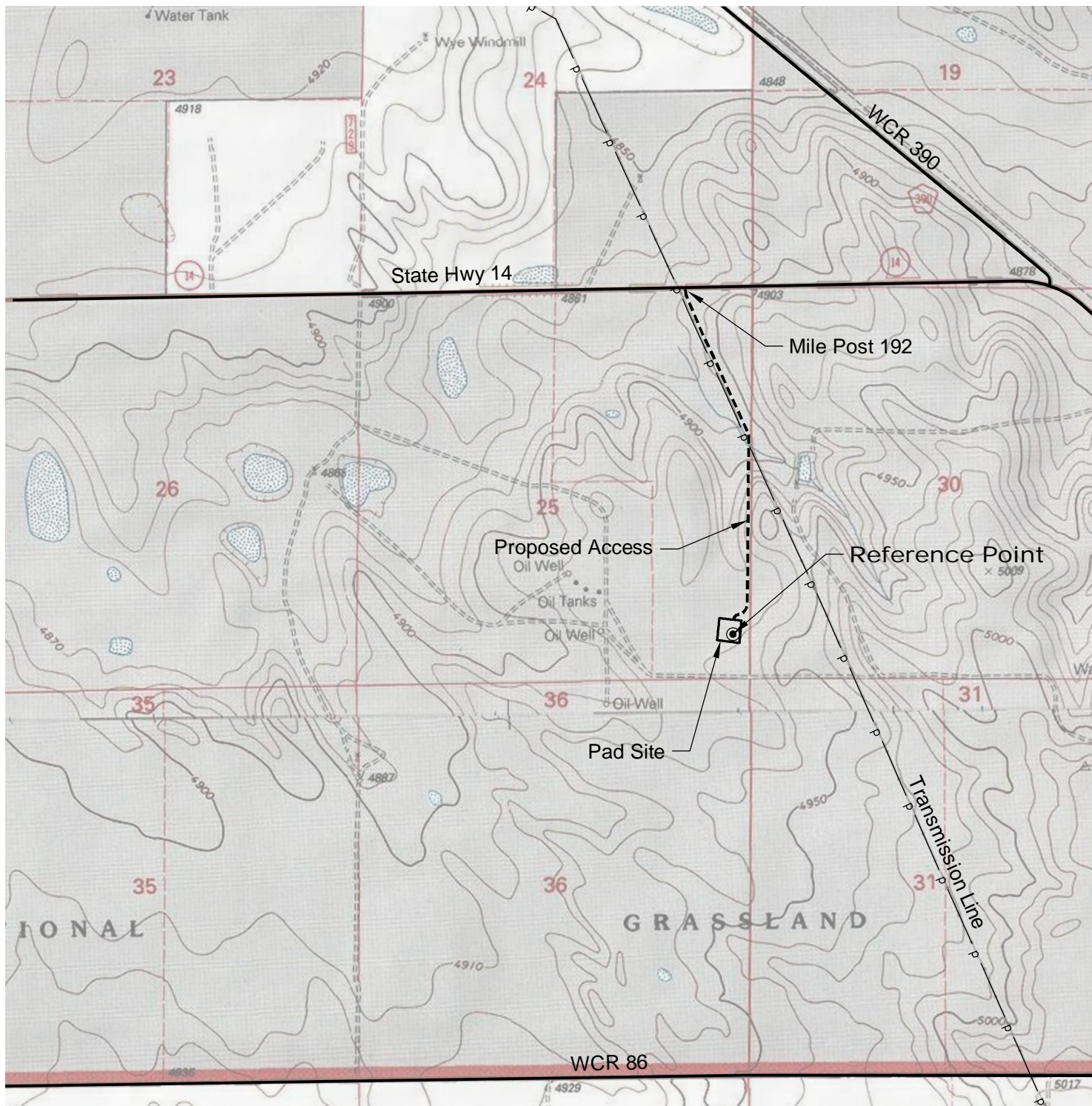


# ACCESS ROAD MAP



## DRIVING DIRECTIONS:

- MP 0.0 - Intersection of Highway 14 a.k.a. WCR 90 & Highway 392 a.k.a. WCR 77 in Briggsdale; East on Highway 14
- MP 15.7 - Right on access to Allred 25-44-8-60 Pad at Mile Post 192 & Transmission Lines
- MP 16.6 - Allred 25-44-8-60 Pad

3/14/11



North



Graphic Scale in Feet  
1 inch = 2000 feet



LAND SURVEYING AND MAPPING  
LAFAYETTE - WINTER PARK  
Ph 303 666 0379 Fx 303 665 6320

**CARRIZO OIL & GAS, INC**  
**ALLRED 25-44-8-60 PAD**

**SE1/4 SE1/4 SEC. 25 T8N R60W**  
**6th PM WELD COUNTY COLORADO**