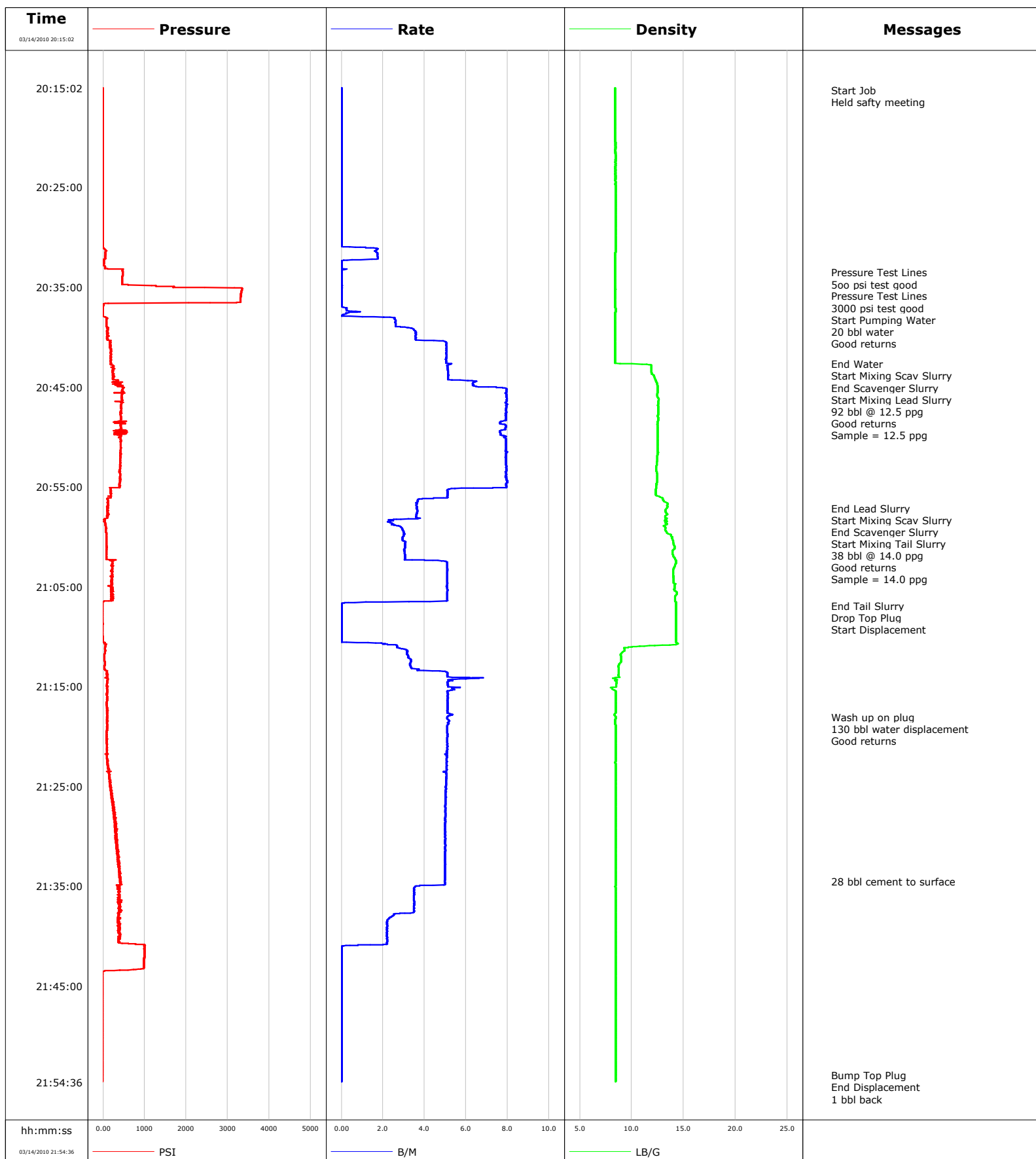


Well EF15A-28 C28 595
Field N Parachute
Engineer Terry Borg
Country United States

Client Encana
SIR No. B2K7-00016
Job Type 9 5/8 Surface
Job Date 03-14-2010





Cementing Service Report

				Customer Encana		Job Number B2K7-00016		
Well EF15A-28 C28 595 C 28			Location (legal) C 28		Schlumberger Location GCO		Job Start Mar/14/2010	
Field N Parachute		Formation Name/Type Shale		Deviation	Bit Size 12.3 in	Well MD 1724.0 ft		Well TVD 1724.0 ft
County Garfield		State/Province Colorado		BHP	BHST 100 degF	BHCT 87 degF	Pore Press. Gradient	
Well Master 0631163083		API/UWI						
Rig Name Nabors M13	Drilled For Gas	Service Via Land	Casing/Liner					
			Depth, ft	Size, in	Weight, lb/ft	Grade	Thread	
Offshore Zone	Well Class New	Well Type Development	1724.0	9.630	36.0	K55	8RD	
			0.0	0.000	0.0			
Drilling Fluid Type Bentonite		Max. Density	Plastic Viscosity	Tubing/Drill Pipe				
				Depth,	Size,	Weight,	Grade	Thread
Service Line Cementing	Job Type 9 5/8 Surface							
Max. Allowed Tub. Press	Max. Allowed Ann. Press	WH Connection 9 5/8	Perforations/Open Hole					
			Top,	Bottom,		No. of Shots	Total Interval	
Service Instructions Cement 9 5/8 Surface Casing @ 1700ft 25% Annular Xs 20bbl Water 244sks 12.5ppg G Lead 139sks 14.0ppg G Tail Displace with water							Diameter	
			Treat Down Casing	Displacement 130.0 bbl	Packer Type	Packer Depth		
			Tubing Vol.	Casing Vol. 133.0 bbl	Annular Vol. 106.0 bbl	Openhole Vol. 249.0 bbl		
Casing/Tubing Secured <input checked="" type="checkbox"/>		1 Hole Vol. Circulated prior to Cement <input checked="" type="checkbox"/>		Casing Tools		Squeeze Job		
Lift Pressure 853 psi				Shoe Type Guide		Squeeze Type		
Pipe Rotated <input type="checkbox"/>		Pipe Reciprocated <input type="checkbox"/>		Shoe Depth 1724.0 ft		Tool Type		
No. Centralizers 22		Top Plugs 1	Bottom Plugs	Stage Tool Type		Tool Depth		
Cement Head Type Single				Stage Tool Depth		Tail Pipe Size		
Job Scheduled For Mar/14/2010 16:00		Arrived on Location Mar/14/2010 20:00	Leave Location Mar/14/2010	Collar Type Diff-Fill		Tail Pipe Depth		
				Collar Depth 1686.0 ft		Sqz. Total Vol.		
Date	Time 24-hr clock	Treating Pressure PSI	Flow Rate B/M	Density LB/G	Volume BBL	Message		
03/14/2010	19:47:00					Started Acquisition		
03/14/2010	20:15:02	-8	0.0	8.43	0.0			
03/14/2010	20:15:14					Start Job		
03/14/2010	20:15:14	-9	0.0	8.43	0.0			
03/14/2010	20:15:20	-9	0.0	8.43	0.0			
03/14/2010	20:15:26					Held safty meeting		
03/14/2010	20:15:26	-8	0.0	8.43	0.0			
03/14/2010	20:17:00	-8	0.0	8.43	0.0			
03/14/2010	20:18:40	-9	0.0	8.43	0.0			
03/14/2010	20:20:20	-9	0.0	8.43	0.0			
03/14/2010	20:22:00	-8	0.0	8.43	0.0			
03/14/2010	20:23:40	-9	0.0	8.43	0.0			
03/14/2010	20:25:20	-8	0.0	8.43	0.0			
03/14/2010	20:27:00	-8	0.0	8.43	0.0			
03/14/2010	20:28:40	-8	0.0	8.43	0.0			
03/14/2010	20:30:20	-11	0.0	8.43	0.0			
03/14/2010	20:32:00	51	1.7	8.43	1.1			
03/14/2010	20:33:31					Pressure Test Lines		
03/14/2010	20:33:31	467	0.0	8.43	1.5			
03/14/2010	20:33:33					500 psi test good		
03/14/2010	20:33:33	467	0.0	8.43	1.5			

Well			Field		Job Start		Customer		Job Number	
EF15A-28 C28 595 C 28			N Parachute		Mar/14/2010		Encana		B2K7-00016	
Date	Time 24-hr clock	Treating Pressure PSI	Flow Rate B/M	Density LB/G	Volume BBL	Message				
03/14/2010	20:35:20	3335	0.0	8.43	1.5					
03/14/2010	20:35:28					Pressure Test Lines				
03/14/2010	20:35:28	3328	0.0	8.43	1.5					
03/14/2010	20:35:31					3000 psi test good				
03/14/2010	20:35:31	3326	0.0	8.43	1.5					
03/14/2010	20:37:00	-5	0.0	8.43	1.5					
03/14/2010	20:37:25					Start Pumping Water				
03/14/2010	20:37:25	-5	0.5	8.43	1.6					
03/14/2010	20:37:34					20 bbl water				
03/14/2010	20:37:34					Good returns				
03/14/2010	20:37:34	-6	0.4	8.43	1.7					
03/14/2010	20:38:40	82	2.6	8.42	3.5					
03/14/2010	20:40:20	117	3.6	8.42	9.1					
03/14/2010	20:42:00	193	5.1	8.42	17.4					
03/14/2010	20:42:40					End Water				
03/14/2010	20:42:40	177	5.3	8.89	20.8					
03/14/2010	20:42:41					Start Mixing Scav Slurry				
03/14/2010	20:42:41	188	5.3	8.89	20.9					
03/14/2010	20:42:44					End Scavenger Slurry				
03/14/2010	20:42:44	171	5.2	11.44	21.2					
03/14/2010	20:43:40	251	5.1	11.92	25.9					
03/14/2010	20:44:30					Start Mixing Lead Slurry				
03/14/2010	20:44:30	244	6.5	12.35	30.4					
03/14/2010	20:44:58					92 bbl @ 12.5 ppg				
03/14/2010	20:44:58	350	6.5	12.50	33.4					
03/14/2010	20:44:59					Good returns				
03/14/2010	20:44:59	449	6.5	12.50	33.5					
03/14/2010	20:45:00					Sample = 12.5 ppg				
03/14/2010	20:45:00	449	6.6	12.50	33.6					
03/14/2010	20:45:20	475	7.9	12.50	36.2					
03/14/2010	20:47:00	431	8.0	12.56	49.4					
03/14/2010	20:48:40	538	7.6	12.50	62.6					
03/14/2010	20:50:20	430	7.9	12.51	75.6					
03/14/2010	20:52:00	424	7.9	12.47	88.8					
03/14/2010	20:53:40	418	7.9	12.43	102.0					
03/14/2010	20:55:20	186	5.1	12.31	114.7					
03/14/2010	20:57:00	121	3.6	13.46	122.0					
03/14/2010	20:57:07					End Lead Slurry				
03/14/2010	20:57:07	98	3.6	13.40	122.4					
03/14/2010	20:57:08					Start Mixing Scav Slurry				
03/14/2010	20:57:08	126	3.6	13.40	122.5					
03/14/2010	20:57:41					End Scavenger Slurry				
03/14/2010	20:57:41	127	3.6	13.34	124.5					
03/14/2010	20:57:46					Start Mixing Tail Slurry				
03/14/2010	20:57:46	131	3.6	13.49	124.8					
03/14/2010	20:58:00					38 bbl @ 14.0 ppg				
03/14/2010	20:58:00	95	3.6	13.20	125.6					
03/14/2010	20:58:20					Good returns				
03/14/2010	20:58:20	22	2.3	13.42	126.7					
03/14/2010	20:58:25					Sample = 14.0 ppg				
03/14/2010	20:58:25	37	2.5	13.17	126.9					
03/14/2010	20:58:40	49	2.5	13.33	127.5					
03/14/2010	21:00:20	73	2.9	13.94	132.3					
03/14/2010	21:02:00	80	3.1	14.03	137.4					

Well			Field		Job Start	Customer	Job Number
EF15A-28 C28 595 C 28			N Parachute		Mar/14/2010	Encana	B2K7-00016
Date	Time 24-hr clock	Treating Pressure PSI	Flow Rate B/M	Density LB/G	Volume BBL	Message	
03/14/2010	21:05:20	240	5.1	14.10	153.6		
03/14/2010	21:06:54					End Tail Slurry	
03/14/2010	21:06:54	-17	0.0	14.27	159.7		
03/14/2010	21:06:58					Drop Top Plug	
03/14/2010	21:06:58	-17	0.0	14.27	159.7		
03/14/2010	21:07:00	-17	0.0	14.27	159.7		
03/14/2010	21:07:06					Start Displacement	
03/14/2010	21:07:06	-17	0.0	14.27	159.7		
03/14/2010	21:08:40	-7	0.0	14.24	159.7		
03/14/2010	21:10:20	-5	0.0	14.25	159.7		
03/14/2010	21:12:00	34	3.2	8.96	163.6		
03/14/2010	21:13:40	97	5.1	8.75	169.7		
03/14/2010	21:15:20	105	5.4	8.28	178.5		
03/14/2010	21:17:00	94	5.1	8.45	187.1		
03/14/2010	21:18:03					Wash up on plug	
03/14/2010	21:18:03					130 bbl water displacement	
03/14/2010	21:18:03	104	5.1	8.43	192.5		
03/14/2010	21:18:40	105	5.2	8.40	195.6		
03/14/2010	21:19:33					Good returns	
03/14/2010	21:19:33	79	5.1	8.43	200.1		
03/14/2010	21:20:20	99	5.1	8.43	204.1		
03/14/2010	21:22:00	93	5.1	8.43	212.6		
03/14/2010	21:23:40	143	5.0	8.43	221.0		
03/14/2010	21:25:20	201	5.0	8.43	229.4		
03/14/2010	21:27:00	232	5.0	8.43	237.8		
03/14/2010	21:28:40	291	5.0	8.44	246.1		
03/14/2010	21:30:20	332	5.0	8.44	254.4		
03/14/2010	21:32:00	353	5.0	8.44	262.8		
03/14/2010	21:33:40	421	5.0	8.44	271.1		
03/14/2010	21:34:30					28 bbl cement to surface	
03/14/2010	21:34:30	396	5.0	8.44	275.2		
03/14/2010	21:35:20	351	3.5	8.44	278.8		
03/14/2010	21:37:00	424	3.5	8.44	284.6		
03/14/2010	21:38:40	364	2.2	8.44	289.3		
03/14/2010	21:40:20	376	2.2	8.44	293.0		
03/14/2010	21:42:00	989	0.0	8.44	294.2		
03/14/2010	21:43:40	-23	0.0	8.44	294.2		
03/14/2010	21:45:20	-22	0.0	8.44	294.2		
03/14/2010	21:47:00	-22	0.0	8.44	294.2		
03/14/2010	21:48:40	-22	0.0	8.44	294.2		
03/14/2010	21:50:20	-21	0.0	8.44	294.2		
03/14/2010	21:52:00	-20	0.0	8.44	294.2		
03/14/2010	21:53:40	-21	0.0	8.44	294.2		
03/14/2010	21:53:56					Bump Top Plug	
03/14/2010	21:53:56	-19	0.0	8.44	294.2		
03/14/2010	21:53:57					End Displacement	
03/14/2010	21:53:57	-19	0.0	8.44	294.2		
03/14/2010	21:53:59					1 bbl back	
03/14/2010	21:53:59	-20	0.0	8.44	294.2		
03/14/2010	21:54:33					End Job	
03/14/2010	21:54:33	-20	0.0	8.44	294.2		

Well EF15A-28 C28 595 C 28	Field N Parachute	Job Start Mar/14/2010	Customer Encana	Job Number B2K7-00016
--------------------------------------	-----------------------------	---------------------------------	---------------------------	---------------------------------

Post Job Summary

Average Pump Rates, bbl/min					Volume of Fluid Injected, bbl			
Slurry 4.7	N2	Mud 0.0	Maximum Rate 8.0	Total Slurry 130.0	Mud 0.0	Spacer 20.0	N2	
Treating Pressure Summary, psi					Breakdown Fluid			
Maximum 3352	Final 1000	Average 337	Bump Plug to	Breakdown	Type	Volume	Density	
Avg. N2 Percent	Designed Slurry Volume 130.0 bbl		Displacement 130.0 bbl	Mix Water Temp 60 degF	Cement Circulated to Surface? <input checked="" type="checkbox"/>	Volume 28.0 bbl		
					Washed Thru Perfs <input type="checkbox"/>	To		
Customer or Authorized Representative Randy Burke			Schlumberger Supervisor Terry Borg			Circulation Lost <input type="checkbox"/>	Job Completed <input checked="" type="checkbox"/>	
				-		-		