

WELLBORE DIAGRAM
Conquest Oil Company
SWD #C7A

SESE, Sec. 34, T7N, R63W
Weld County, CO
API #: 05-123-32207

ACTUAL

2/10/2011
CLD

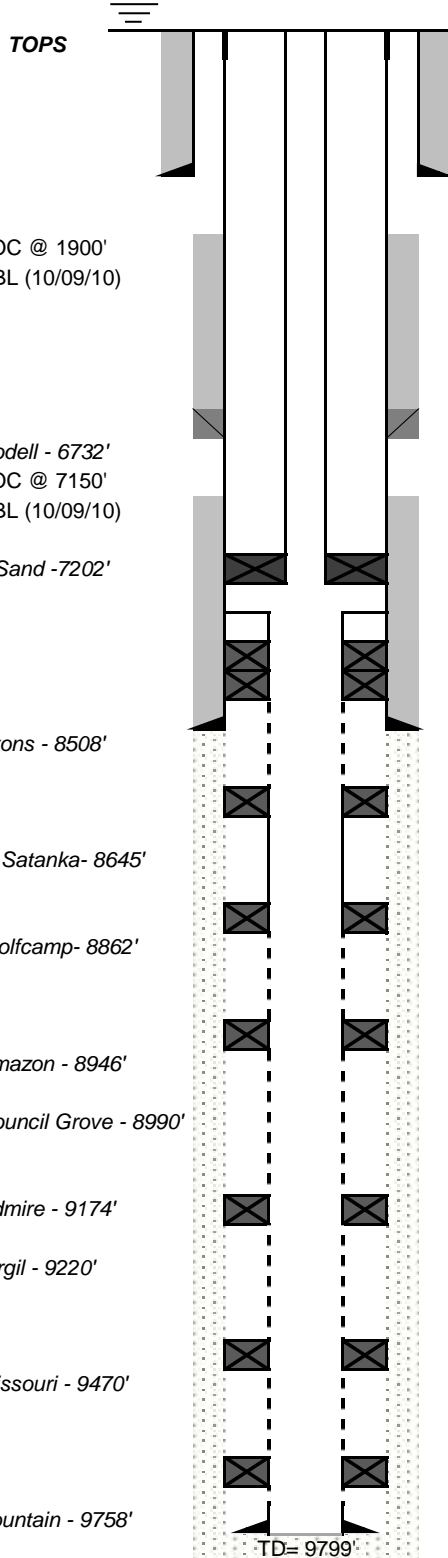
Note: LNR tally shows set @ 9799' (corrected to est. LTD)

Well was drilled to 9790'

*Request to continue w/o remedial cementing ops, approved D.O. 10/27/10

K.B.= 4728
G.L.= 4713
15

WH: 4-1/2" LT&C x 3-1/2" 8 rd SS bushing on
landing donut. XR46 ring gasket, 3-1/2" wrap
around, 4-1/2" housing



9-5/8", 36# J-55 ST&C CSG Set @ 595' (12-1/4" O.H.)
Cmt'd w/ 215 sx total: 190 sx & 25 sx (top job)

3-1/2" N-80 9.3# TBG SET IN PKR @ 8370', 50K Comp.

1, 4" (2.9" ID) SN, MS bottom, w/ 5.986" Loc. Sub
253 jnts 3-1/2" 9.3# N-80 8rd EUE, coated ID,
8' x 3-1/2" TBG Sub
4' x 3-1/2" TBG Sub
1 jnt 3-1/2" 9.3# N-80 8rd EUE, coated ID

6.52'

DV @ 6645'

Cmt'd w/ 955 sx total, 905 sx Premium Lite w/ additives 13.4 ppg, 1.55 yld
& 50 sx Neat 15.8 ppg, 1.15 yld

Arrow Pak Ret. PKR @ 8368' (elements @ 8370', EOP @ 8379'), Max OD: 5.938", ID: 4"

TOL @ 8386'

ECP @ 8432'

ECP @ 8445'

7" 23 & 26# K-55 & N-80 LT&C CSG Set @ 8,505' (8-3/4" O.H.)

Cmt'd w/ 245 sx (1st stage) Class G 50:50 POZ, w/additives 1.71 yld.

ECP @ 8590'

Blank Pipe

ECP @ 8806'

Treatment Summary

Type	Date	Qty	Comments
Slotted Pipe	Acid	11/16/2010	2,016 gal
			During SRT

ECP @ 8897'

ECP @ 9174'

ECP @ 9462'

ECP @ 9716'

4-1/2" 11.6# K-55 LT&C Slotted LNR (TOL @ 8,436, EOL @ 9,799') (6-1/8" O.H.)
w/ wash-in shoe with seal profile