

EOG RESOURCES, INC.

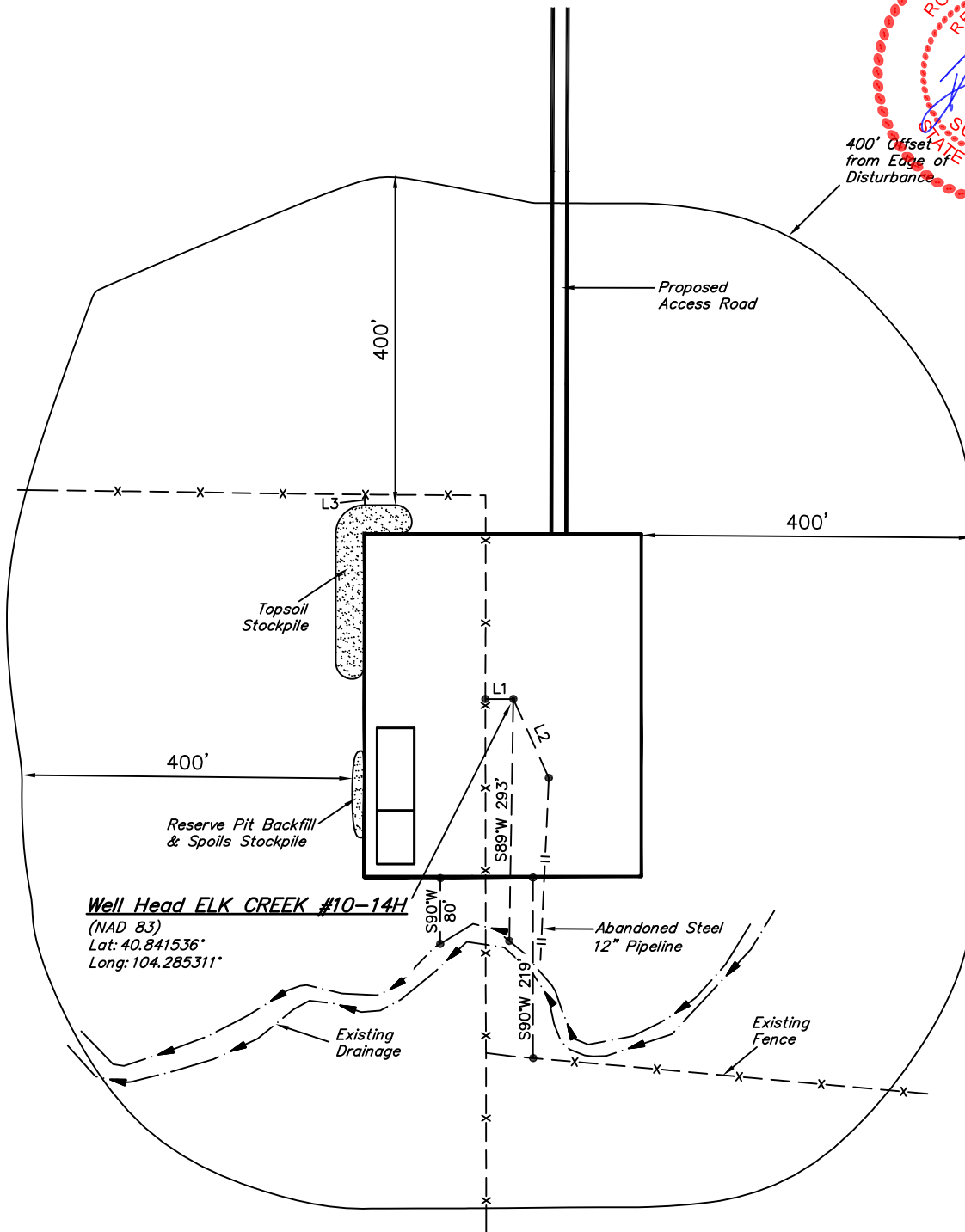
ADDENDUM TO LEGAL PLAT FOR

ELK CREEK #10-14H
SECTION 14, T10N, R62W, 6th P.M.
501' FNL 2144' FEL

SCALE: 1" = 200'

DATE: 01-10-11

DRAWN BY: K.O.

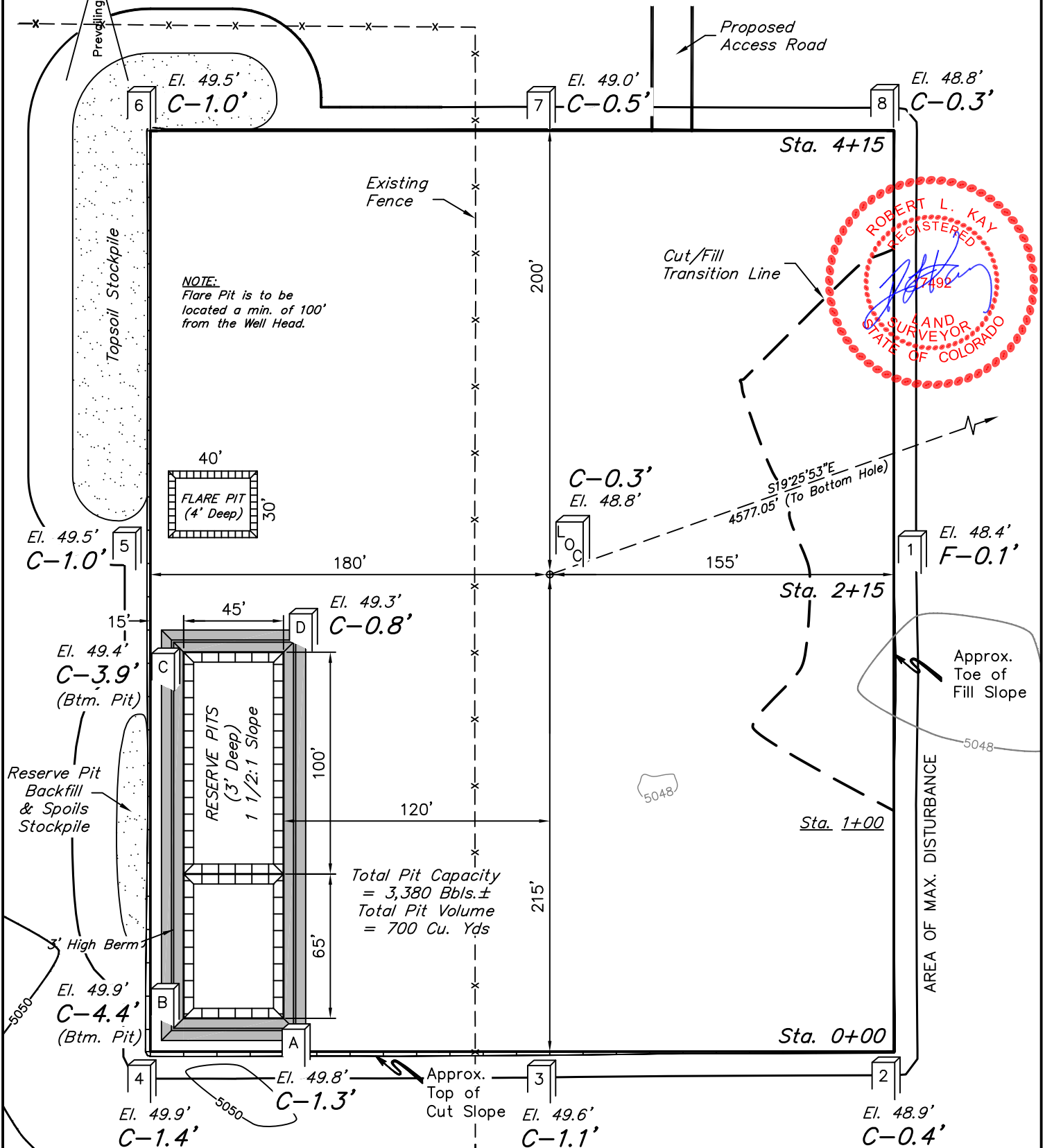


LINE TABLE			
LINE	DESCRIPTION	BEARING	LENGTH
L1	To Fence	N00°W	34'
L2	To Pipeline	S66°W	105'
L3	To Pipeline	S89°E	13'

EOG RESOURCES, INC.
CONSTRUCTION LAYOUT FOR
ELK CREEK #10-14H
SECTION 14, T10N, R62W, 6th P.M.
501' FNL 2144' FEL

FIGURE #1

SCALE: 1" = 60'
 DATE: 01-10-11
 DRAWN BY: K.O.



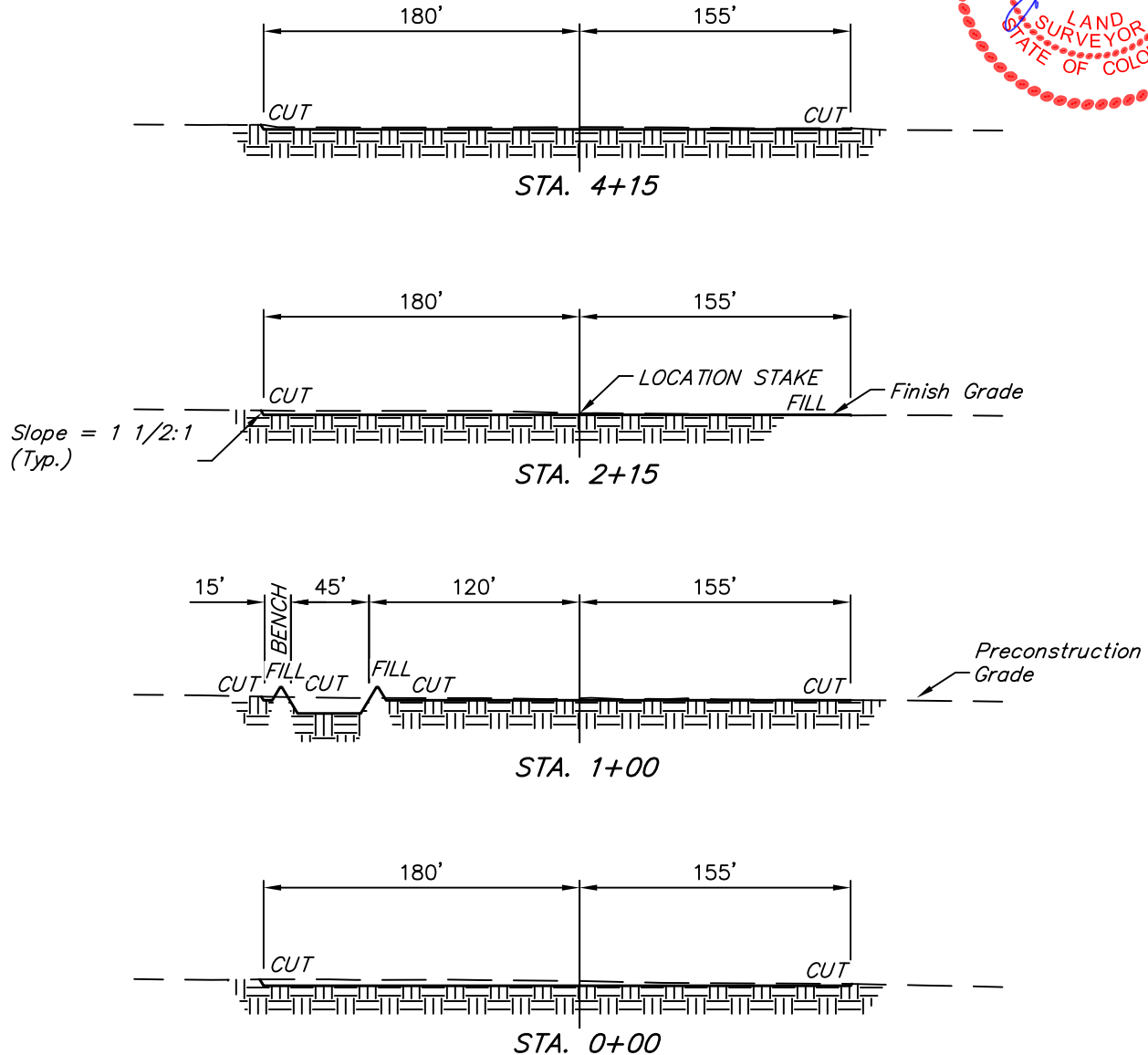
Elev. Ungraded Ground At Loc. Stake = **5048.8'**
 FINISHED GRADE ELEV. AT LOC. STAKE = **5048.5'**

UINTAH ENGINEERING & LAND SURVEYING
 85 So. 200 East * Vernal, Utah 84078 * (435) 789-1017

1" = 40'
X-Section
Scale
1" = 100'
DATE: 01-10-11
DRAWN BY: K.O.

EOG RESOURCES, INC.
CONSTRUCTION LAYOUT CROSS SECTIONS FOR
ELK CREEK #10-14H
SECTION 14, T10N, R62W, 6th P.M.
501' FNL 2144' FEL

FIGURE #2



NOTE:

Topsoil should not be Stripped Below Finished Grade on Substructure Area.

APPROXIMATE ACREAGES
WELL SITE DISTURBANCE = ± 3.955 ACRES
ACCESS ROAD DISTURBANCE = ± 4.830 ACRES
TOTAL = ± 8.785 ACRES

* NOTE:
FILL QUANTITY INCLUDES 5% FOR COMPACTION

APPROXIMATE YARDAGES

(6") Topsoil Stripping = 2,620 Cu. Yds.
Remaining Location = 1,290 Cu. Yds.
TOTAL CUT = 3,910 CU.YDS.
FILL = 940 CU.YDS.

EXCESS MATERIAL = 2,970 Cu. Yds.
Topsoil & Pit Backfill = 2,970 Cu. Yds.
(1/2 Pit Vol.)
EXCESS UNBALANCE = 0 Cu. Yds.
(After Interim Rehabilitation)

UINTAH ENGINEERING & LAND SURVEYING
85 So. 200 East * Vernal, Utah 84078 * (435) 789-1017

EOG RESOURCES, INC.

TYPICAL RIG LAYOUT FOR

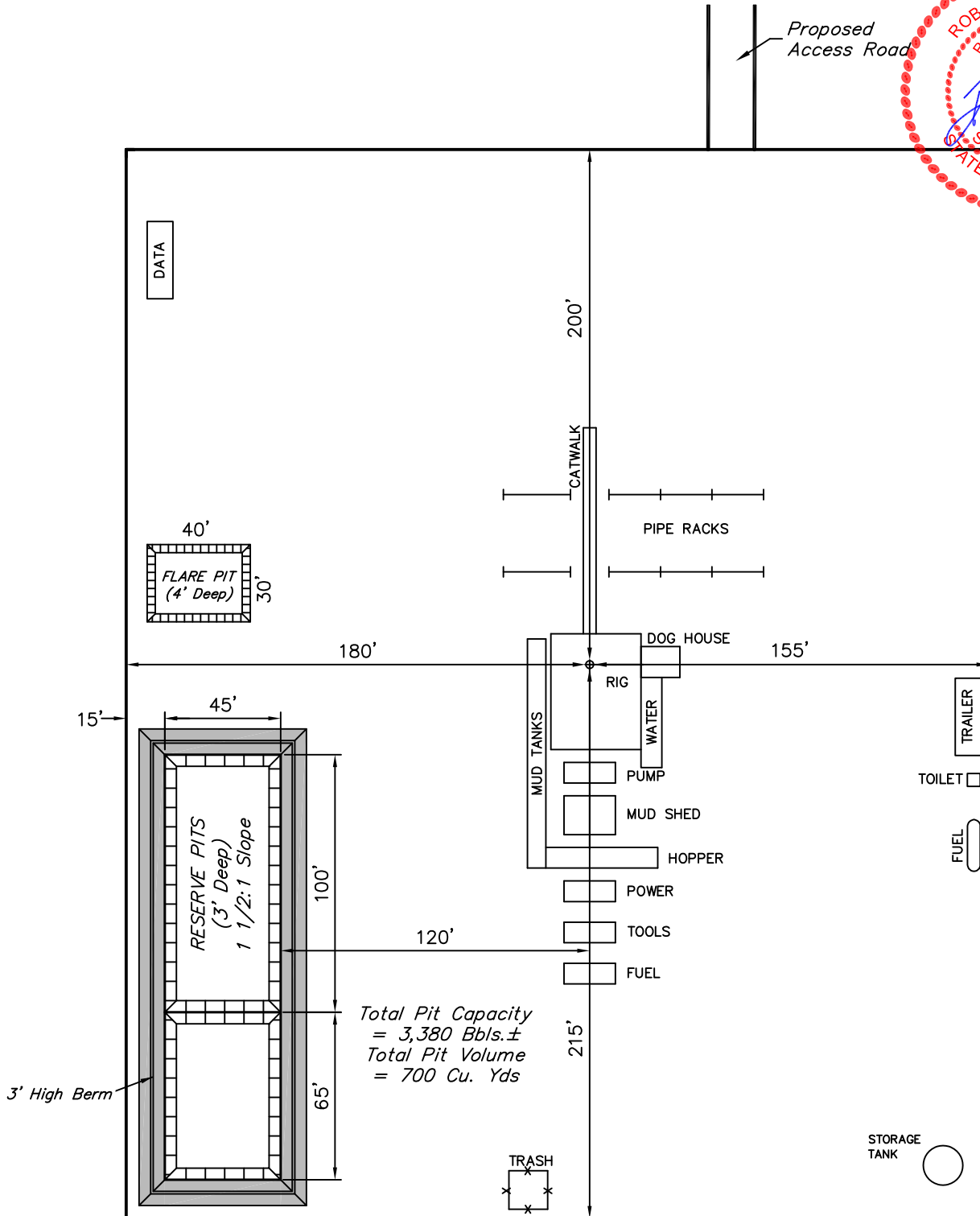
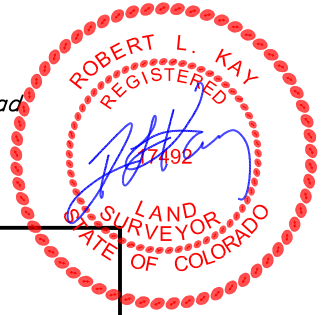
ELK CREEK #10-14H
SECTION 14, T10N, R62W, 6th P.M.
501' FNL 2144' FEL

FIGURE #3

SCALE: 1" = 60'

DATE: 01-10-11

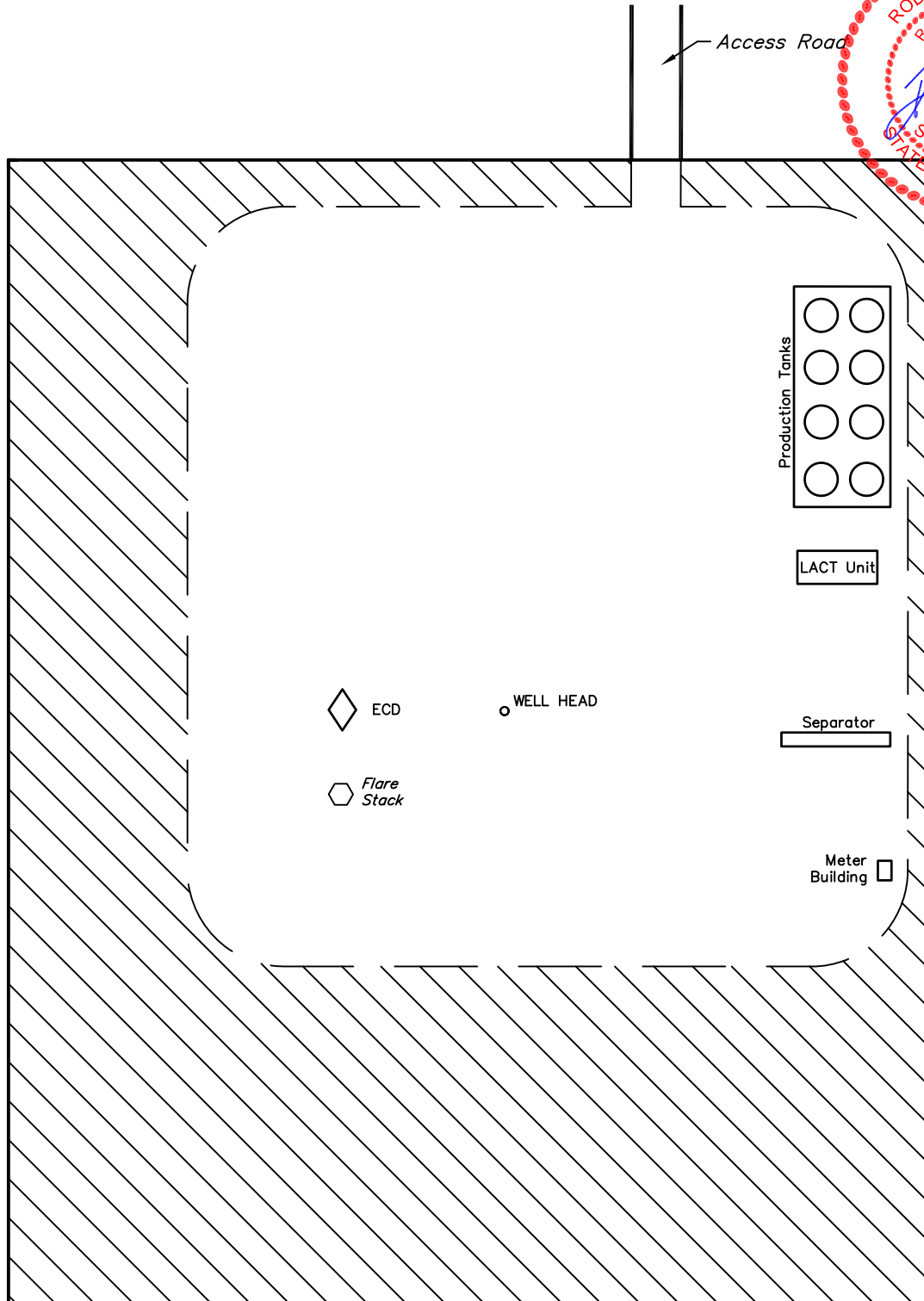
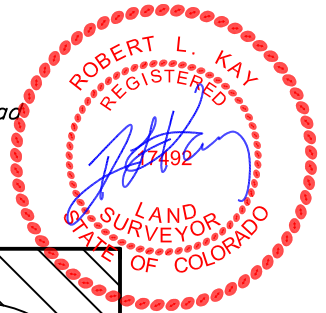
DRAWN BY: K.O.



EOG RESOURCES, INC.
RECLAMATION DIAGRAM FOR
ELK CREEK #10-14H
SECTION 14, T10N, R62W, 6th P.M.
501' FNL 2144' FEL



FIGURE #4
SCALE: 1" = 60'
DATE: 01-10-11
DRAWN BY: K.O.



APPROXIMATE ACREAGES
UN-RECLAIMED = ± 1.554 ACRES



EOG RESOURCES, INC.

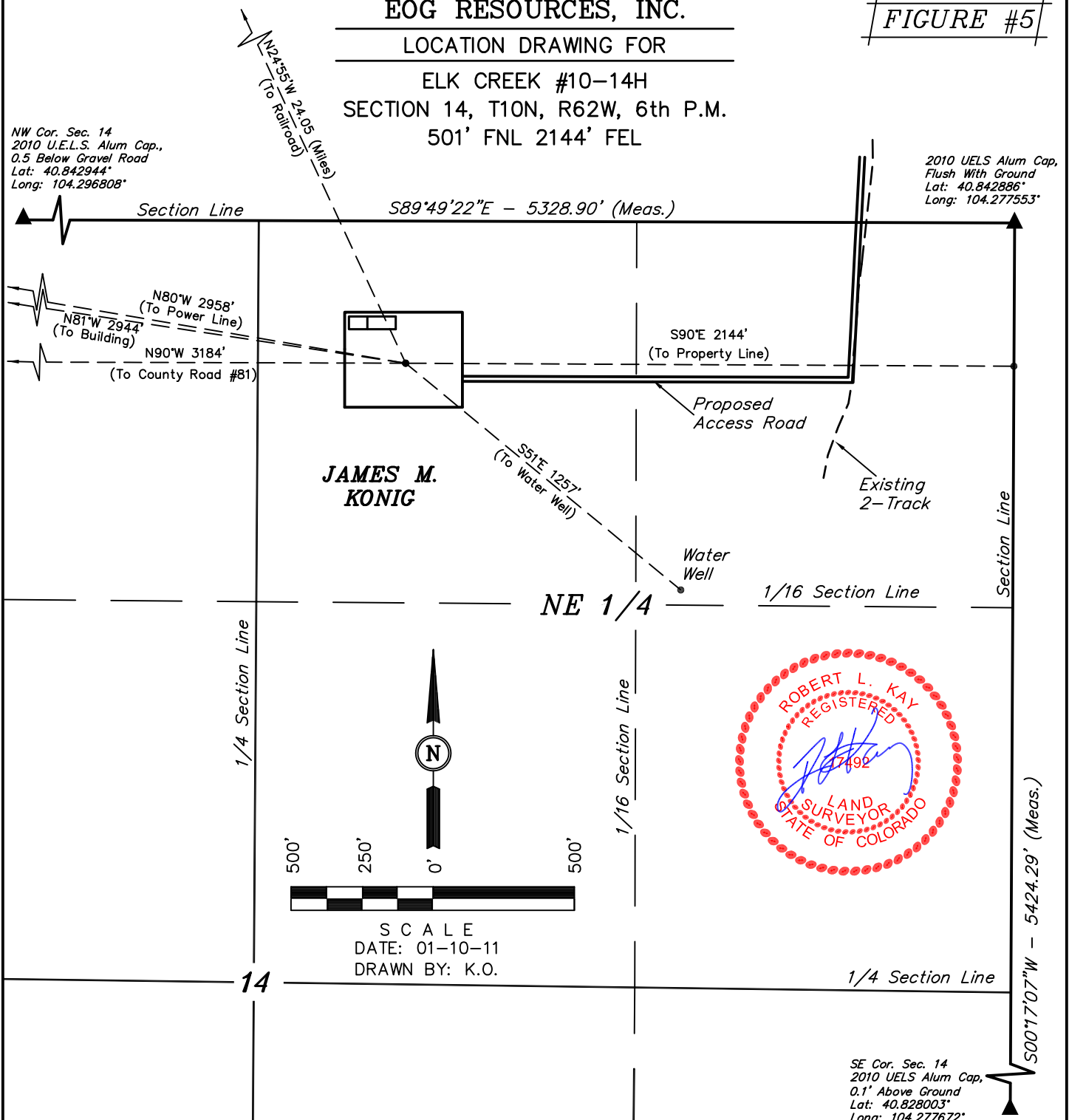
LOCATION DRAWING FOR

ELK CREEK #10-14H
SECTION 14, T10N, R62W, 6th P.M.
501' FNL 2144' FEL

FIGURE #5

NW Cor. Sec. 14
2010 U.E.L.S. Alum Cap.,
0.5 Below Gravel Road
Lat: 40.842944°
Long: 104.296808°

2010 UELS Alum Cap,
Flush With Ground
Lat: 40.842886°
Long: 104.277553°



PLANT COMMUNITY

- ☐ DISTURBED GRASSLAND
- ☐ NATIVE GRASSLAND
- ☐ SHRUB LAND
- ☐ PLAINS RIPARIAN
- ☐ MOUNTAIN RIPARIAN
- ☐ FOREST LAND
- ☐ WETLANDS AQUATIC
- ☐ ALPINE
- ☐ OTHER (Describe): _____

CURRENT LAND USE

- CROP LAND: ☐ IRRIGATED ☐ DRY LAND ☐ IMPROVED PASTURE ☐ HAY MEADOW ☐ CRP
- NON-CROP LAND: ☐ RANGELAND ☐ TIMBER ☐ RECREATIONAL ☐ OTHER (Describe) _____
- SUBDIVIDED: ☐ INDUSTRIAL ☐ COMMERCIAL ☐ RESIDENTIAL _____

FUTURE LAND USE

- CROP LAND: ☐ IRRIGATED ☐ DRY LAND ☐ IMPROVED PASTURE ☐ HAY MEADOW ☐ CRP
- NON-CROP LAND: ☐ RANGELAND ☐ TIMBER ☐ RECREATIONAL ☐ OTHER (Describe) _____
- SUBDIVIDED: ☐ INDUSTRIAL ☐ COMMERCIAL ☐ RESIDENTIAL _____