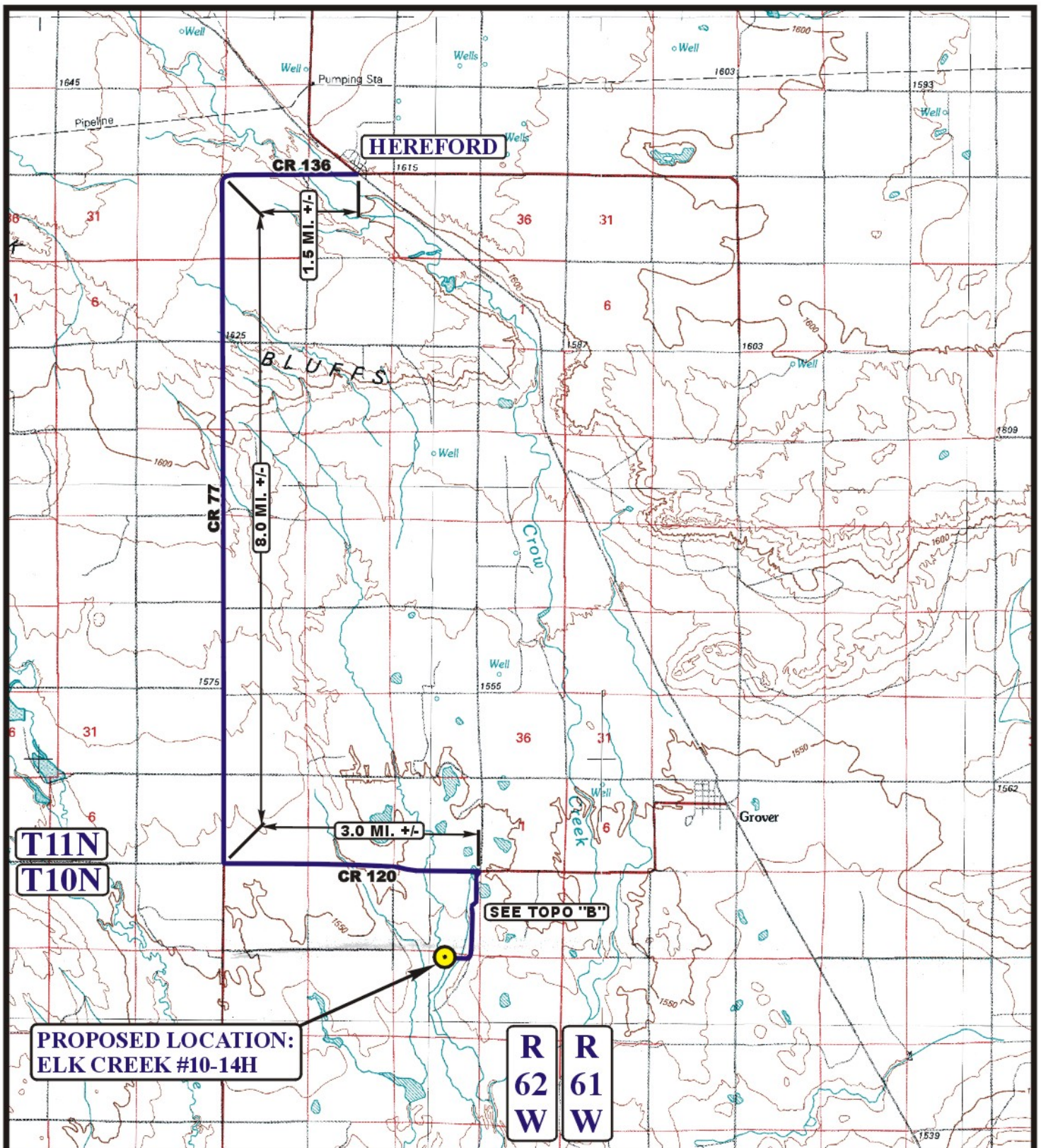


EOG RESOURCES, INC.  
ELK CREEK #10-14H  
SECTION 14, T10N, R62W, 6<sup>th</sup> P.M.

PROCEED IN A WESTERLY DIRECTION FROM HEREFORD, COLORADO ALONG COUNTY ROAD 136 APPROXIMATELY 1.5 MILES TO THE JUNCTION OF THIS ROAD AND COUNTY ROAD 77 TO THE SOUTH; TURN LEFT AND PROCEED IN A SOUTHERLY DIRECTION APPROXIMATELY 8.0 MILES TO THE JUNCTION OF THIS ROAD AND COUNTY ROAD 120 TO THE EAST; TURN LEFT AND PROCEED IN AN EASTERLY DIRECTION APPROXIMATELY 3.0 MILES TO THE BEGINNING OF THE PROPOSED ACCESS TO THE SOUTHWEST; FOLLOW ROAD FLAGS IN A SOUTHWESTERLY, THEN SOUTHERLY, THEN WESTERLY DIRECTION APPROXIMATELY 7,013' TO THE PROPOSED LOCATION.

TOTAL DISTANCE FROM HEREFORD, COLORADO TO THE PROPOSED WELL LOCATION IS APPROXIMATELY 13.8 MILES.



# LEGEND:

PROPOSED LOCATION

EOG RESOURCES, INC.

**ELK CREEK #10-14H**  
 SECTION 14, T10N, R62W, 6th P.M.  
 501' FNL 2144' FEL



Uintah Engineering & Land Surveying  
 85 South 200 East Vernal, Utah 84078  
 (435) 789-1017 \* FAX (435) 789-1813



ACCESS ROAD  
 MAP

01 14 11  
 MONTH DAY YEAR

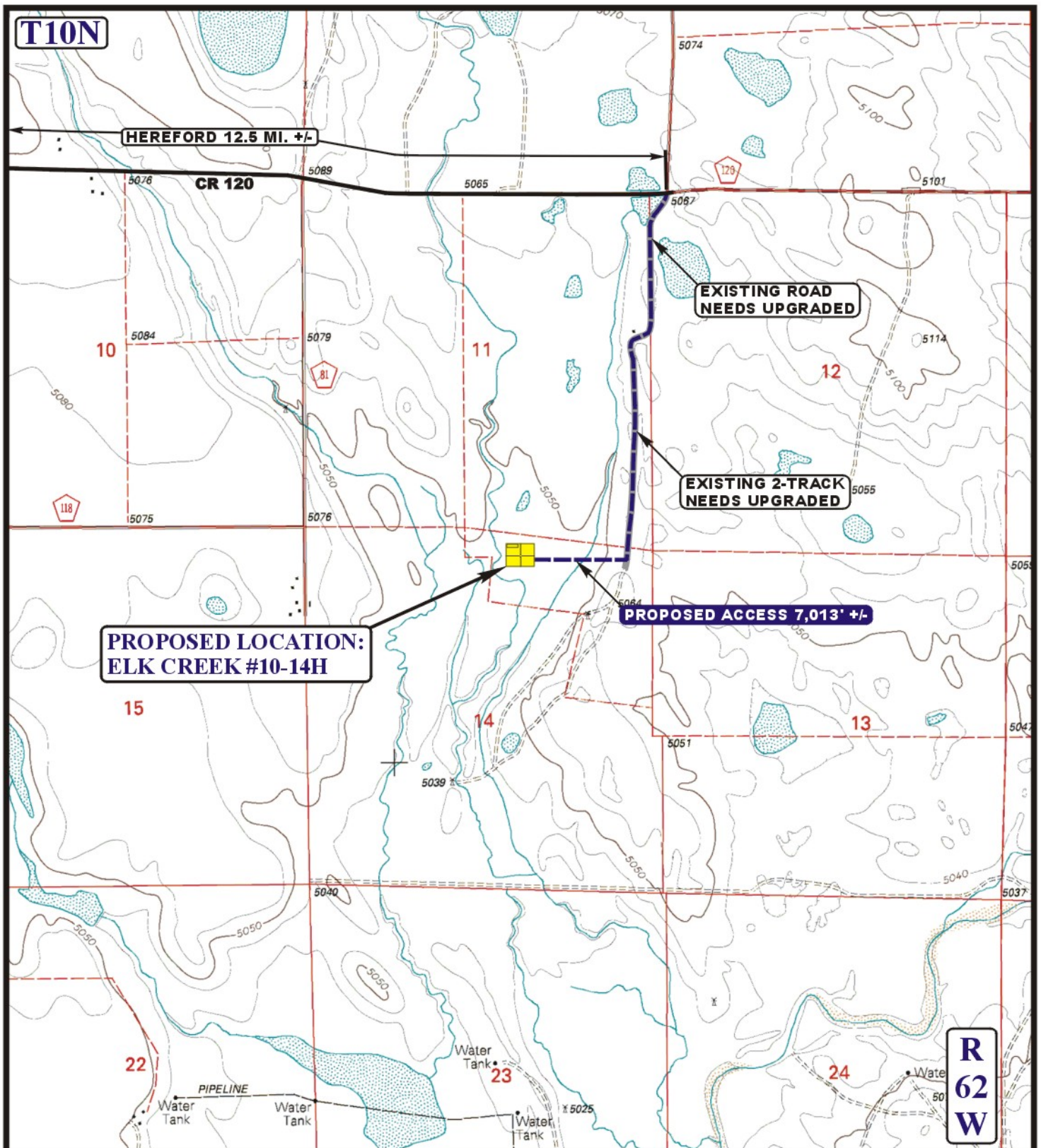
SCALE: 1:100,000

DRAWN BY: J.J.

REVISED: 00-00-00







# **LEGEND:**

————— EXISTING ROAD  
 - - - - - PROPOSED ACCESS ROAD

**EOG RESOURCES, INC.**

**ELK CREEK #10-14H**  
**SECTION 14, T10N, R62W, 6th P.M.**  
**501' FNL 2144' FEL**



**Uintah Engineering & Land Surveying**  
 85 South 200 East Vernal, Utah 84078  
 (435) 789-1017 \* FAX (435) 789-1813



**ACCESS ROAD**  
**MAP**

**01 14 11**  
 MONTH DAY YEAR

SCALE: 1" = 2000' DRAWN BY: J.J. REVISED: 00-00-00

**B**  
**TOPO**