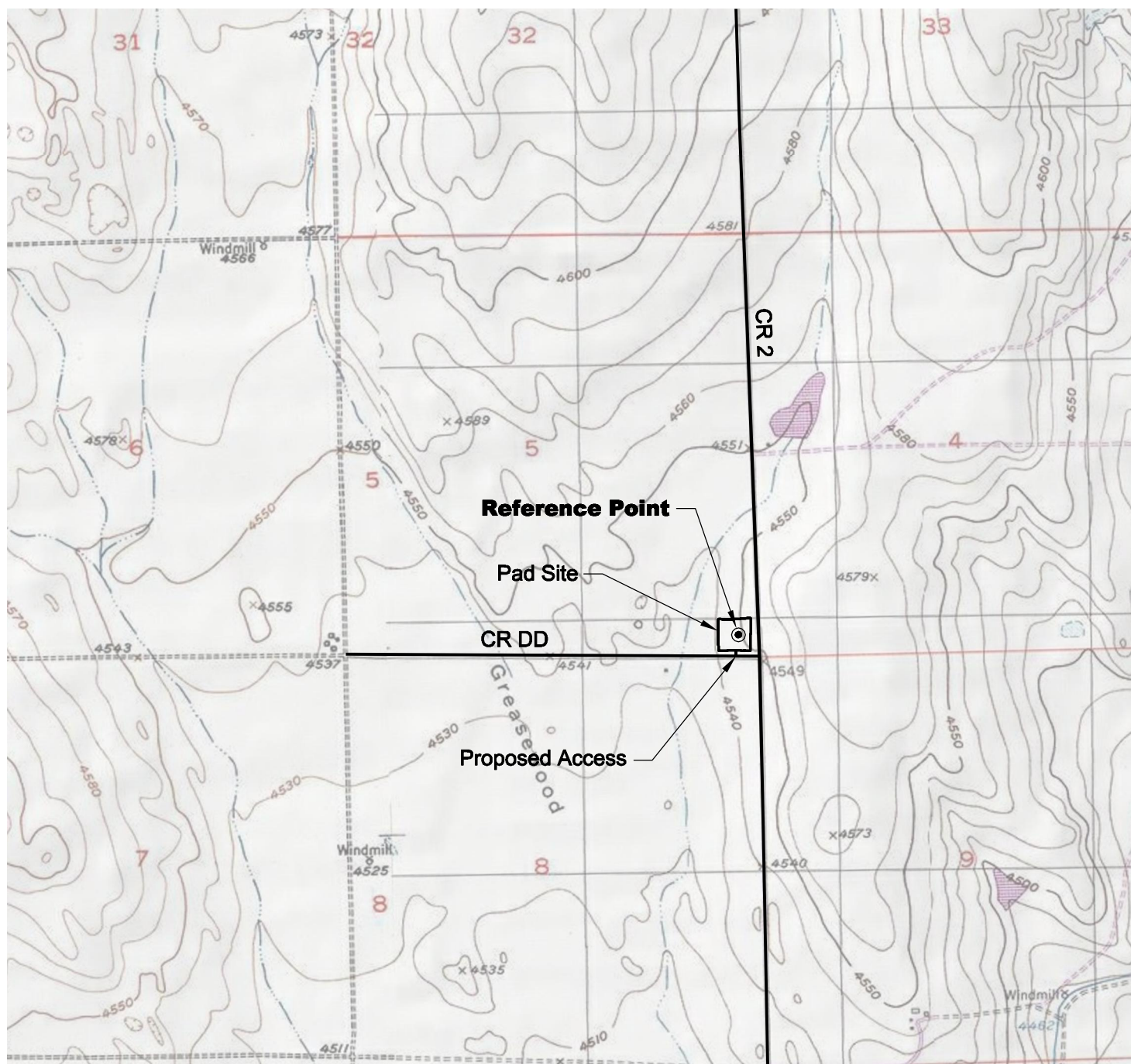


ACCESS ROAD MAP



DRIVING DIRECTIONS:

From Town of Orchard, beginning at intersection of
Washington Ave & CR X; East on CR X
MP 0.2 Left on CR 2
MP 6.3 Left on CR DD
MP 6.4 Right on access onto Wickstrom 5-44-5-60 pad



North



Graphic Scale in Feet
1 inch = 2000 feet



LAND SURVEYING AND MAPPING
LAFAYETTE - WINTER PARK
Ph 303 666 0379 Fx 303 665 6320

CARRIZO OIL & GAS, INC
WICKSTROM 5-44-5-60 PAD

SE1/4 SE1/4 SEC. 5 T5N R60W
6th PM MORGAN COUNTY COLORADO

3/17/11